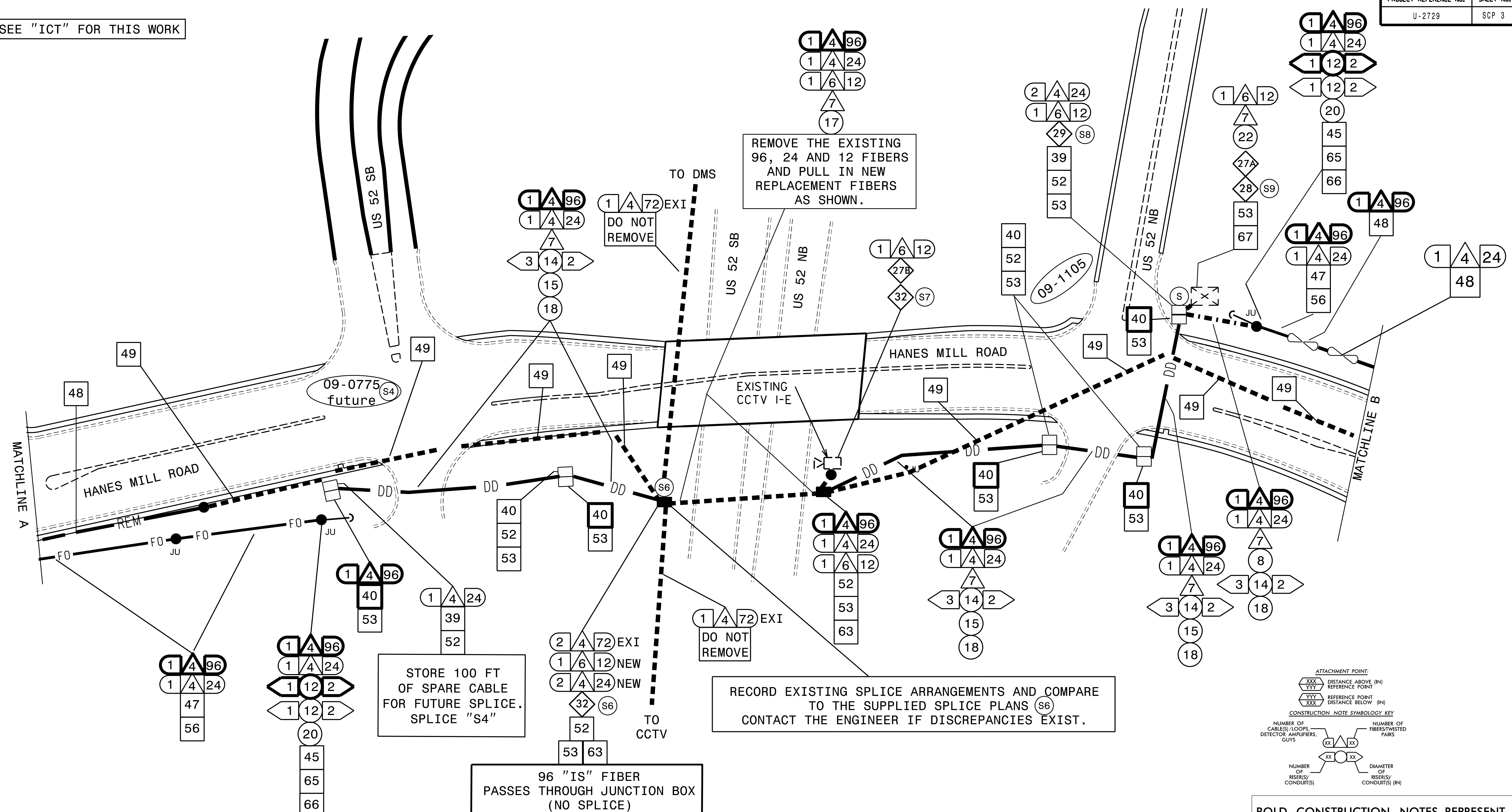


SEE "ICT" FOR THIS WORK



GENERAL CONSTRUCTION NOTES:

- 1). FIVE (5) DAYS PRIOR TO BEGINNING WORK ON THE SIGNAL SYSTEM, CONTACT THE CITY OF WINSTON-SALEM'S SIGNAL SYSTEM SUPERVISOR, AT (336) 748-3228 TO ARRANGE FOR THE CITY TO PROGRAM THE NEW FIELD ETHERNET SWITCHES WITH THE NECESSARY NETWORK CONFIGURATIONS DATA, INCLUDING BUT NOT LIMITED TO: THE PROJECT IP ADDRESS, DEFAULT GATEWAY, SUBNET MASK AND VLAN ID INFORMATION. NOTIFY THE SIGNAL SYSTEM SUPERVISOR AFTER ALL WORK IS PERFORMED TO ENSURE THAT ALL FIBER CIRCUITS ARE FUNCTIONING PROPERLY. WORK IS NOT COMPLETE UNTIL THE SIGNAL SYSTEM IS BACK UP AND OPERATIONAL.

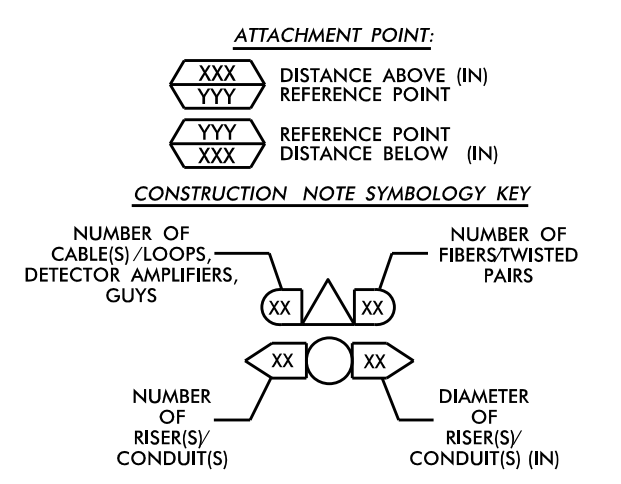
ADDITIONALLY, FIVE (5) DAYS PRIOR TO BEGINNING WORK NOTIFY THE CITY OF WINSTON-SALEM'S "COORDINATOR OF INFRASTRUCTURE SERVICES", AT (336) 747-7016 ABOUT PENDING DISRUPTIONS IN SERVICE.

ADDITIONALLY, FIVE (5) DAYS PRIOR TO BEGINNING WORK ON THE NCDOT 72 FIBER TRUNK CABLE, CONTACT THE NCDOT REGIONAL ITS ENGINEER, MIKE VENABLE, AT (336) 315-7080, TO NOTIFY THE DIVISION OF PENDING OUTAGES. NOTIFY THE REGIONAL ITS ENGINEER AFTER ALL WORK IS PERFORMED TO ENSURE THAT ALL FIBER CIRCUITS ARE FUNCTIONING PROPERLY. WORK IS NOT COMPLETE UNTIL THE 72 FIBER TRUNK CABLE IS BACK UP AND OPERATIONAL.

- 2). CONTRACTOR TO RECORD EXISTING SPLICE ARRANGEMENTS FOR COMPARISON TO THE SUPPLIED SPLICE DETAILS. IF DISCREPANCIES EXIST, CONTACT THE ENGINEER TO DETERMINE HOW TO PROCEED WITH RESPLICING. PROVIDE AS-BUILT PLANS TO THE ENGINEER IF FINAL SPLICE ARRANGEMENTS DIFFERS FROM THE SUPPLIED SPLICE DETAILS.
- 3). PRIOR TO REMOVING ANY EXISTING SIGNAL SYSTEM FIBER OR CITY "IS" FIBER, INSTALL THE NEW FIBER OPTIC CABLE ALONG THE ENTIRE PROJECTS ROUTE. THE CUT WORK SHALL NOT EXCEED 48 HOURS IN DURATION. THIS WORK IS NOT COMPLETED UNTIL ALL SYSTEMS ARE BACK UP AND OPERATIONAL.

PROJECT CONSTRUCTION NOTES:

1. UNLESS OTHERWISE NOTED:
 - OVERLASH NEW FIBER OPTIC CABLE TO EXISTING COMMUNICATIONS CABLE.
 - ATTACH NEW MESSENGER CABLE 40" BELOW POWER.
 - ATTACH ON FRONT SIDE (FS) OF POLE.
2. SEAL ALL CONDUIT ENDS WITH DUCT AND CONDUIT SEALER, AT ALL JUNCTION BOX / CABINET ENTRANCES.
3. UPON REMOVING AN EXITING FIBER CIRCUIT FROM ITS CONDUIT SYSTEM, BACK FILL THE JUNCTION BOX WITH A SUITABLE MATERIAL. ABANDON CONDUIT IN PLACE.



BOLD CONSTRUCTION NOTES REPRESENT "IS FIBER" WORK

SEE SHEET "SCP 2" FOR PROJECT CONSTRUCTION NOTES

DOCUMENT NOT CONSIDERED FINAL UNLESS ALL SIGNATURES COMPLETED

\$\$\$\$\$SYTIME\$\$\$\$\$
\$\$\$\$\$CON\$\$\$\$\$
\$\$\$\$\$SERV\$\$\$\$\$
\$\$\$\$\$PRM\$\$\$\$\$

 7621 Purfoy Road, Suite 115 Fuquay-Varina, NC 27526 License No. F-0669	 Prepared for the Offices of: Transportation, Mobility and Safety Division DEPARTMENT OF TRANSPORTATION 750 Greenfield Parkway, Garner, NC 27529	Winston-Salem Signal System Cable Routing Plans		SEAL Russell W. Thompson License No. 032711
		DIVISION 09 Forsyth County Winston-Salem PLAN DATE: February 2023 REVIEWED BY: RW THOMPSON PREPARED BY: IN AVERY REVIEWED BY:		
SCALE 0 NONE		DocuSigned by: Russell W. Thompson CADD File name: \$FILENAME\$		