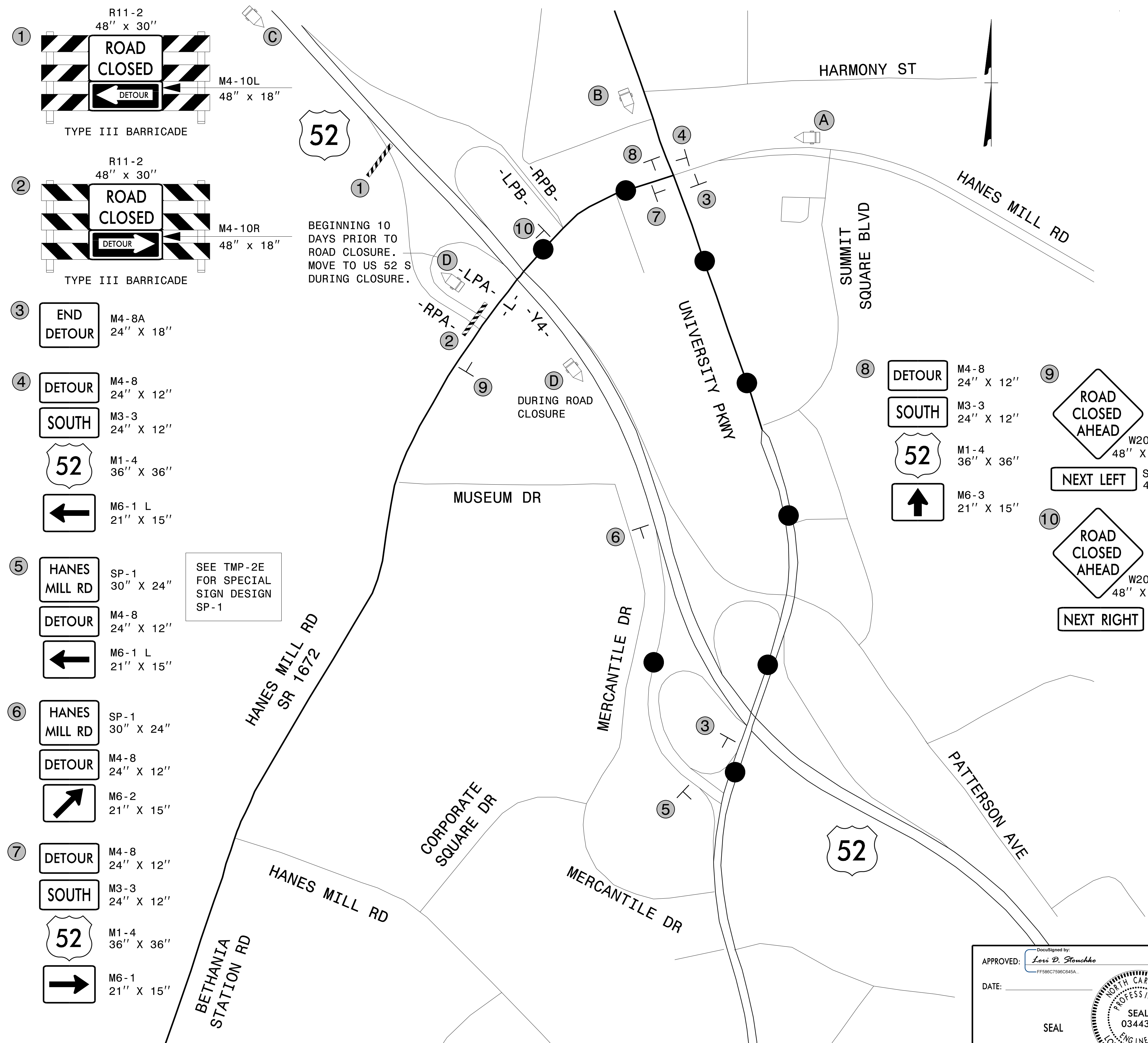


PLANS PREPARED FOR THE NCDOT BY:  
**M** MOTT MACDONALD I & E, LLC  
 1101 HAYNES STREET, SUITE 101  
 RALEIGH, NC 27604  
**M** MOTT MACDONALD NC LICENSE NO. F-0669



- ① R11-2 48" x 30"  
ROAD CLOSED  
M4-10L 48" x 18"  
TYPE III BARRICADE
- ② R11-2 48" x 30"  
ROAD CLOSED  
M4-10R 48" x 18"  
TYPE III BARRICADE
- ③ END DETOUR  
M4-8A 24" x 18"
- ④ DETOUR M4-8 24" x 12"  
SOUTH M3-3 24" x 12"  
52 M1-4 36" x 36"  
← M6-1 L 21" x 15"
- ⑤ HANES MILL RD SP-1 30" x 24"  
DETOUR M4-8 24" x 12"  
← M6-1 L 21" x 15"
- ⑥ HANES MILL RD SP-1 30" x 24"  
DETOUR M4-8 24" x 12"  
↗ M6-2 21" x 15"
- ⑦ DETOUR M4-8 24" x 12"  
SOUTH M3-3 24" x 12"  
52 M1-4 36" x 36"  
→ M6-1 21" x 15"

SEE TMP-2E FOR SPECIAL SIGN DESIGN SP-1

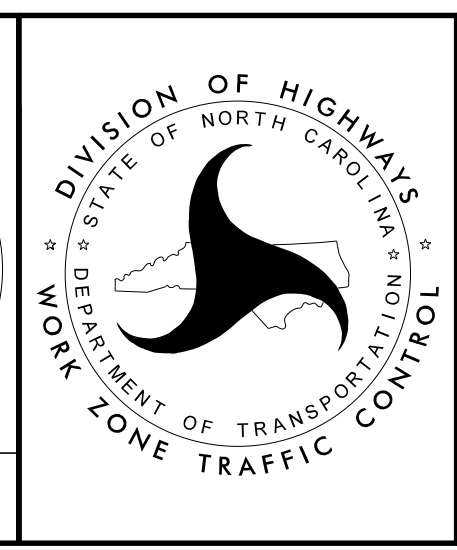
MESSAGES AND LOCATIONS OF CMS'S AS DIRECTED BY ENGINEER

- A MESSAGE NO. 1 RAMP TO US 52 S CLOSED  
MESSAGE NO. 2 DETOUR NEXT LEFT  
CHANGEABLE MESSAGE SIGN DURING ROAD CLOSURE
- B MESSAGE NO. 1 RAMP TO US 52 S CLOSED  
MESSAGE NO. 2 DETOUR KEEP STRAIGHT  
CHANGEABLE MESSAGE SIGN DURING ROAD CLOSURE
- C MESSAGE NO. 1 EXIT 116 TO HANES MILL RD  
MESSAGE NO. 2 CLOSED STARTING (MONTH) (DAY)  
CHANGEABLE MESSAGE SIGN BEGINNING 7 DAYS PRIOR TO ROAD CLOSURE
- D MESSAGE NO. 1 ENTRANCE RAMP US 52 S  
MESSAGE NO. 2 CLOSED STARTING (MONTH) (DAY)  
CHANGEABLE MESSAGE SIGN DURING ROAD CLOSURE
- E MESSAGE NO. 1 EXIT 115 TO HANES MILL RD  
MESSAGE NO. 2 THIS EXIT  
CHANGEABLE MESSAGE SIGN DURING ROAD CLOSURE US 52 S

2/21/2023 G:\308350\_DDC\2\ARC-U-2729\TrafficControl\Top\200\_045\_U-2729\_TC\_TMP\_02D\_US\_52\_SB\_Ramp\_Closure.dgn User:ST086227

APPROVED: *Lori D. Stouchko*  
 DATE: \_\_\_\_\_  
 SEAL

DOCUMENT NOT CONSIDERED FINAL UNLESS ALL SIGNATURES COMPLETED



TEMPORARY TRAFFIC CONTROL  
 DETOUR  
 US 52 SB RAMP CLOSURE