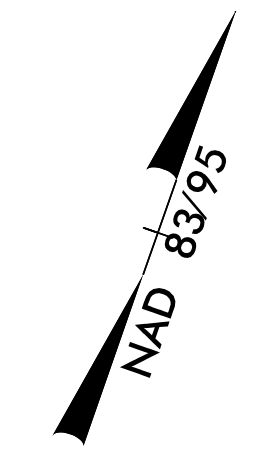


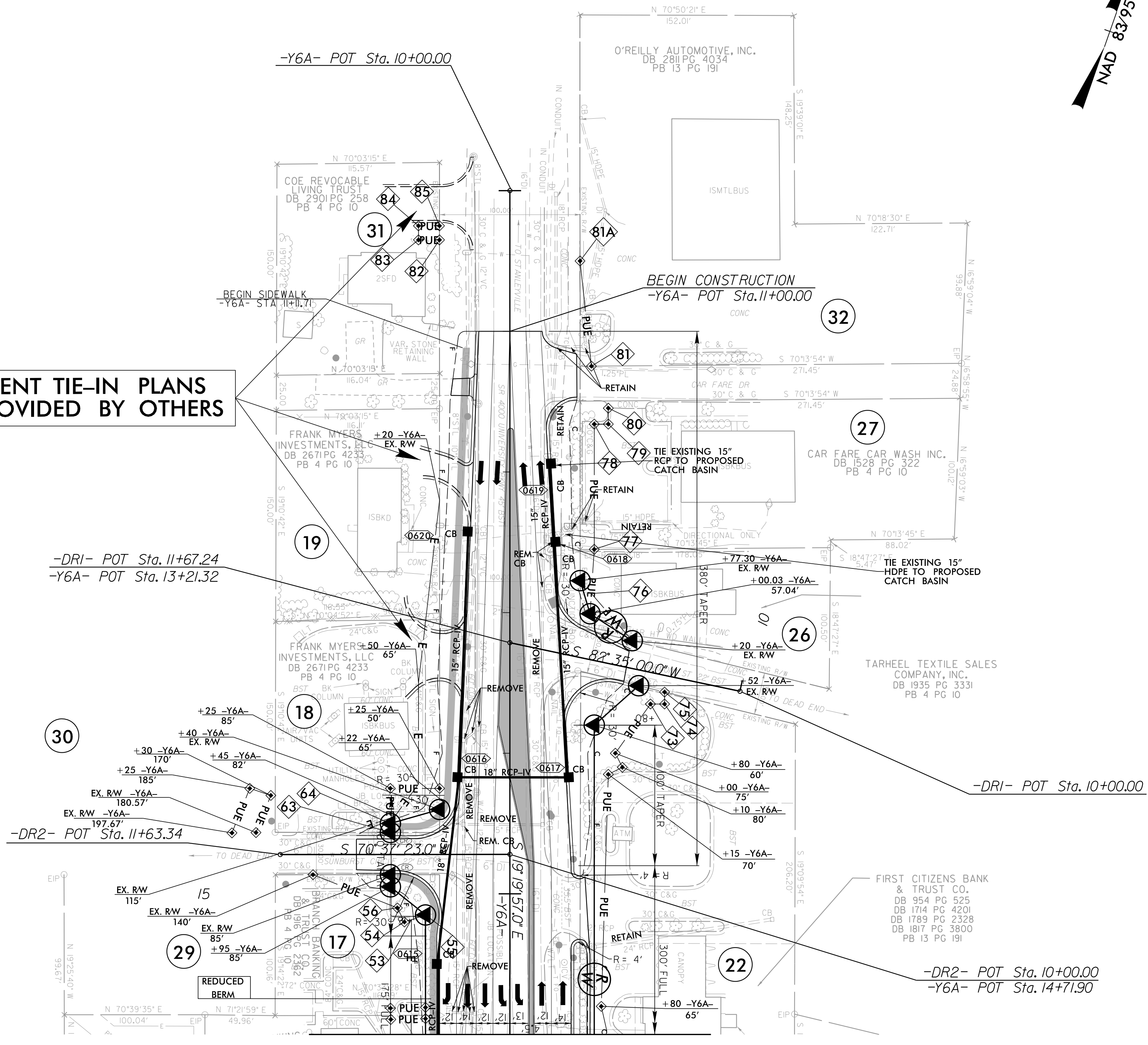
PROJECT REFERENCE NO. U-2729	SHEET NO. 7
RW SHEET NO.	
ROADWAY DESIGN ENGINEER	HYDRAULICS ENGINEER
<p>DOCUMENT NOT CONSIDERED FINAL UNLESS ALL SIGNATURES COMPLETED</p>	
Prepared in the Office of:	<p>M MOTT MACDONALD MOTT MACDONALD HDR Engineering, Inc. of the Carolinas 555 Fayetteville St., Suite 900 Raleigh, NC 27601 N.C.B.E.L.S. License Number: F-0116</p>

-Y6A- SEE PROFILE SHEET 15



- 85 +25 -Y6A- EX. RW
- 84 +25 -Y6A- 65'
- 83 +35 -Y6A-
- 82 +35 -Y6A- EX. RW
- 81A +50 -Y6A- EX. RW
- 81 +50 -Y6A- 58'
- 80 +24.76 -Y6A- 58'
- 79 +66 -Y6A- 70'
- 78 +66 -Y6A- 60'
- 77 +55 -Y6A- 60'
- 76 +86.51 -Y6A- 57.96'
- 75 +56.52 -Y6A- 110'
- 74 +65 -Y6A- 110'
- 73 +65 -Y6A- 100'
- 64 +50 -Y6A- 85'
- 63 EX. RW 85'
- 56 +10 -Y6A- 80'
- 55 +15 -Y6A- 60'
- 54 +20 -Y6A- 75'
- 53 +18.33 -Y6A- 70'

DEVELOPMENT TIE-IN PLANS TO BE PROVIDED BY OTHERS



MATCHLINE SEE SHEET 6
-Y6A- STA. 16+00.00

8/17/09
4/16/2023
C:\Users\paj\OneDrive\Documents\2729_L_rdy_psh07.dgn

EXISTING PAVEMENT REMOVAL