

STATE OF NORTH CAROLINA  
DIVISION OF HIGHWAYS

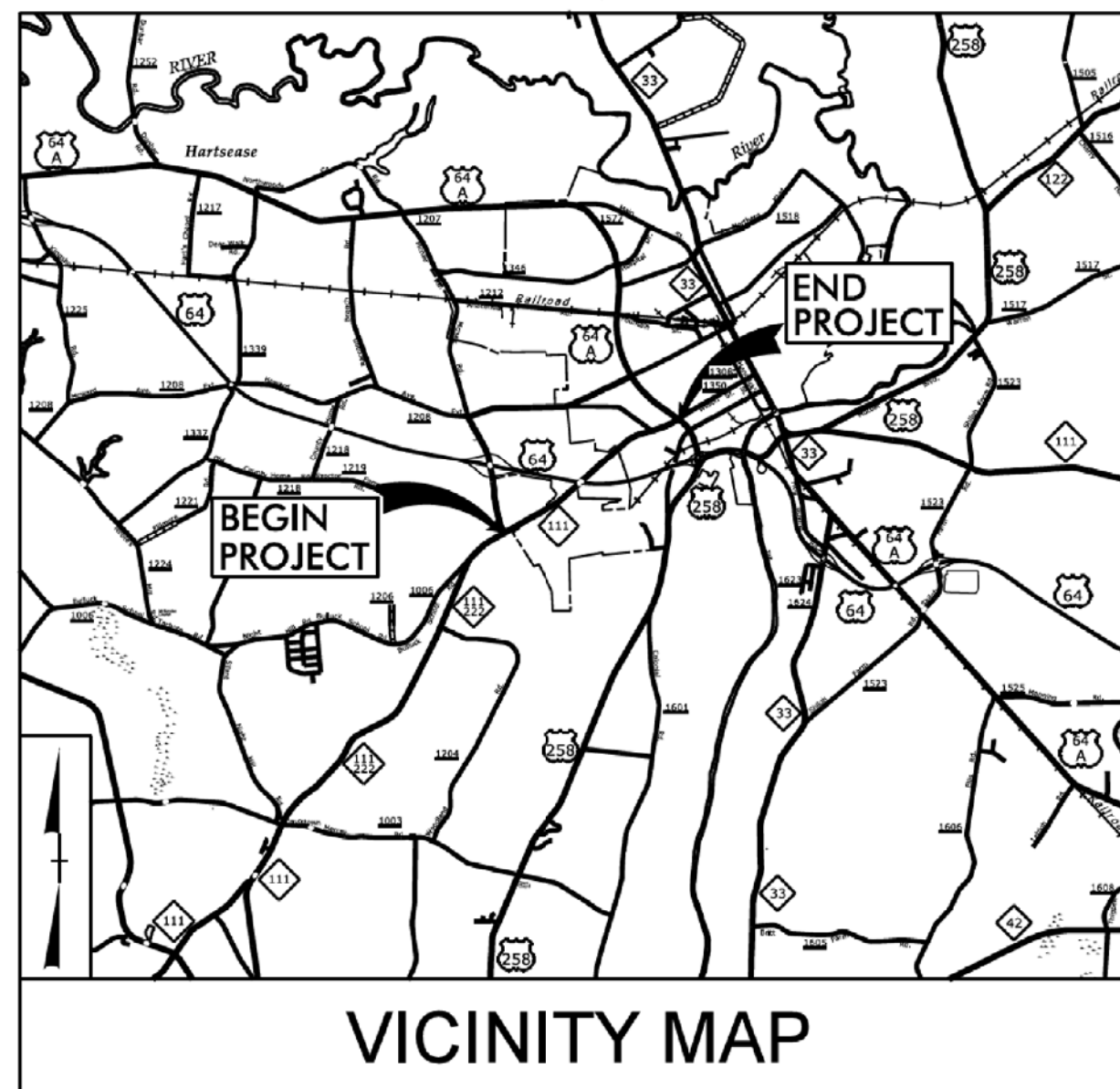
# EDGECOMBE COUNTY

## UTILITIES BY OTHERS FOR INFORMATION ONLY

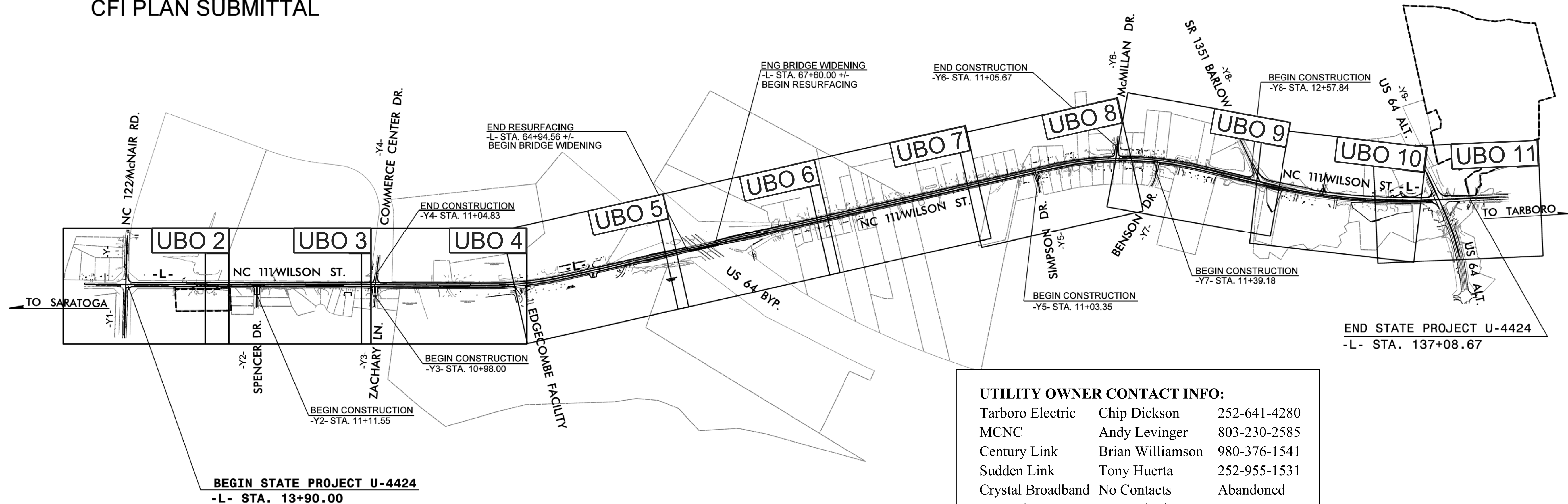
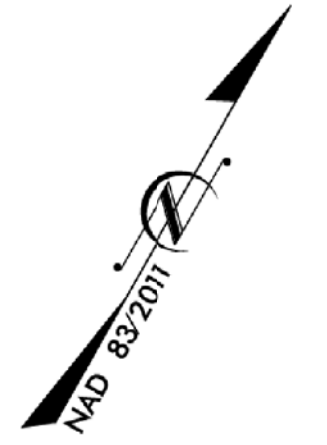
ALL PROPOSED UTILITY WORK SHOWN ON THIS SHEET WILL BE DONE BY OTHERS. NO PAYMENT WILL BE MADE TO THE CONTRACTOR FOR PROPOSED UTILITY WORK SHOWN ON THIS SHEET.

**LOCATION: NC 111 (WILSON STREET) FROM NC 122 (MCNAIR ROAD) TO US 64 ALTERNATE (WESTERN BOULEVARD)**

**TYPE OF WORK: GAS DISTRIBUTION, TELECOM, POWER DISTRIBUTION**



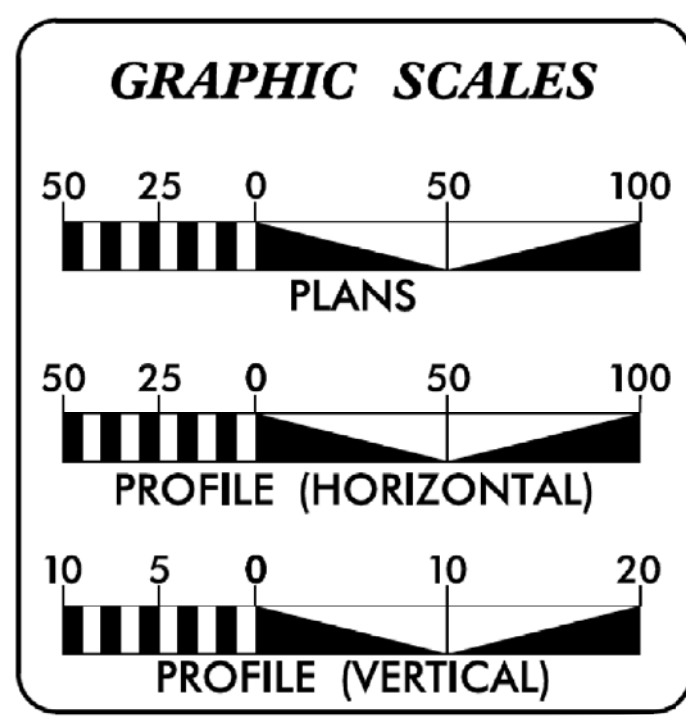
VICINITY MAP  
CFI PLAN SUBMITTAL



A PORTION OF THIS PROJECT IS WITHIN THE MUNICIPAL BOUNDARIES OF TOWN OF TARBORO.

**UTILITY OWNER CONTACT INFO:**

Tarboro Electric	Chip Dickson	252-641-4280
MCNC	Andy Levinger	803-230-2585
Century Link	Brian Williamson	980-376-1541
Sudden Link	Tony Huerta	252-955-1531
Crystal Broadband	No Contacts	Abandoned
PNG Dist.	Jason Bingham	919-222-8147
PNG Trans.	Kelsey Pace	704-731-4705



- UTILITY OWNERS WITH CONFLICTS:**
1. TOWN OF TARBORO ELECTRIC - POWER
  2. MCNC - COMM.
  3. CENTURY LINK - COMM.
  4. SUDDEN LINK - COMM.
  5. CRYSTAL BROADBAND - COMM. (Abandoned)
  6. PIEDMONT NATURAL GAS - GAS DISTRIBUTION
  7. PIEDMONT NATURAL GAS - GAS TRANSMISSION

**DIVISION OF HIGHWAYS UNIT:**

**KEVIN G. BOWMEN**  
**COREY McLAMB**  
**RUSSELL BROADWELL**  
**KIM MOORE**

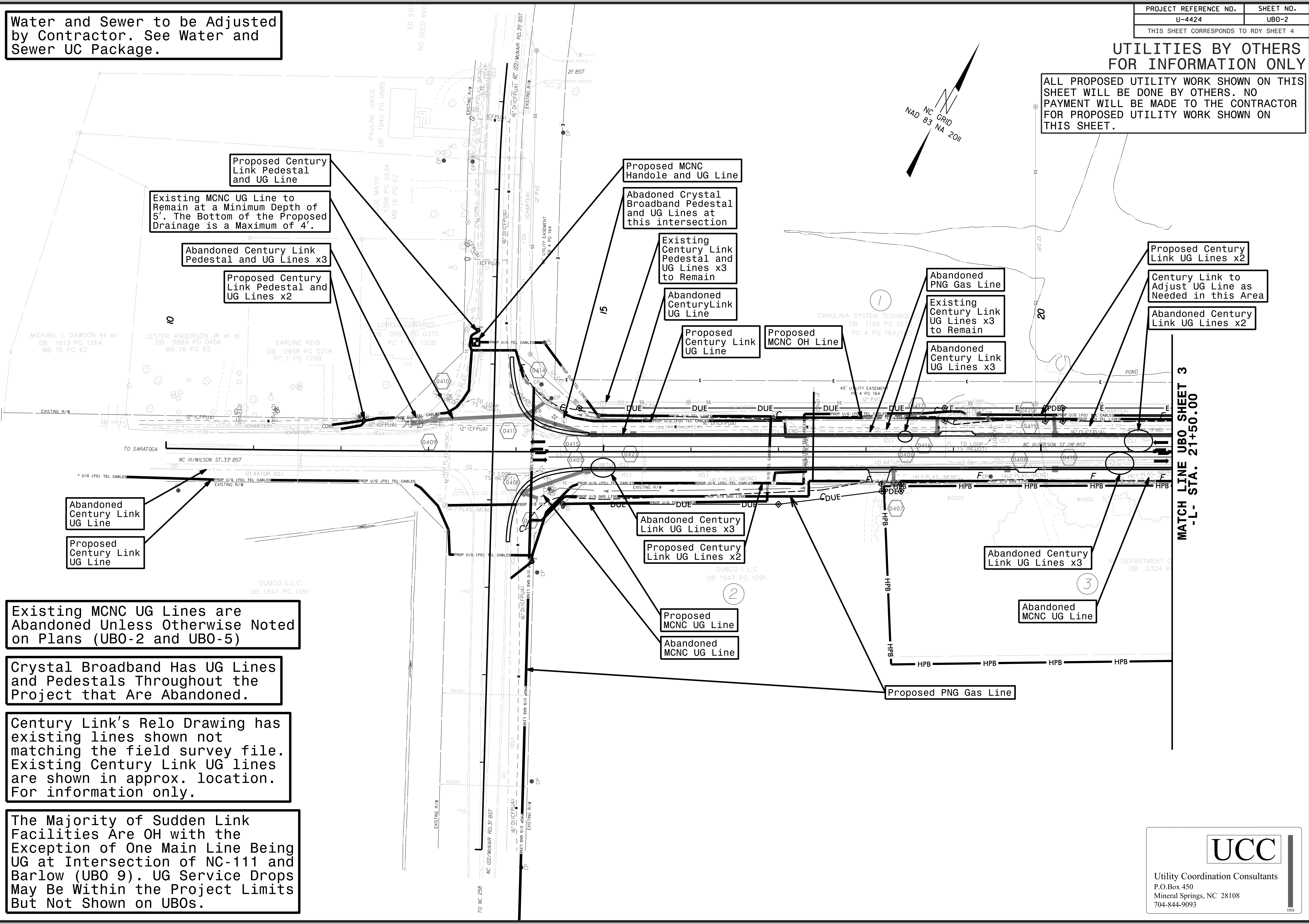
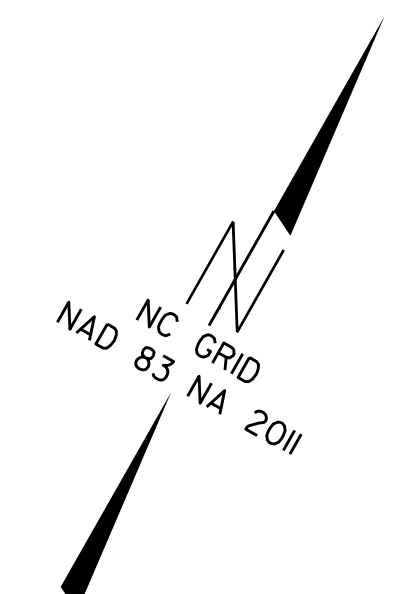
**DIVISION ENGINEER**  
**DIVISION CONSTRUCTION ENGINEER**  
**PROJECT PLANNING ENGINEER**  
**DIVISION UTILITY ENGINEER**

**UCC**  
Utility Coordination Consultants  
P.O. Box 450  
Mineral Springs, NC 28108  
704-844-9093

Water and Sewer to be Adjusted by Contractor. See Water and Sewer UC Package.

**UTILITIES BY OTHERS  
FOR INFORMATION ONLY**

ALL PROPOSED UTILITY WORK SHOWN ON THIS SHEET WILL BE DONE BY OTHERS. NO PAYMENT WILL BE MADE TO THE CONTRACTOR FOR PROPOSED UTILITY WORK SHOWN ON THIS SHEET.



Proposed Century Link Pedestal and UG Line

Existing MCNC UG Line to Remain at a Minimum Depth of 5'. The Bottom of the Proposed Drainage is a Maximum of 4'.

Abandoned Century Link Pedestal and UG Lines x3

Proposed Century Link Pedestal and UG Lines x2

Proposed MCNC Handole and UG Line

Abandoned Crystal Broadband Pedestal and UG Lines at this Intersection

Existing Century Link Pedestal and UG Lines x3 to Remain

Abandoned CenturyLink UG Line

Proposed Century Link UG Line

Proposed MCNC OH Line

Abandoned PNG Gas Line

Existing Century Link UG Lines x3 to Remain

Abandoned Century Link UG Lines x3

Proposed Century Link UG Lines x2

Century Link to Adjust UG Line as Needed in this Area

Abandoned Century Link UG Lines x2

Abandoned Century Link UG Line

Proposed Century Link UG Line

Abandoned Century Link UG Lines x3

Proposed Century Link UG Lines x2

Proposed MCNC UG Line

Abandoned MCNC UG Line

Abandoned Century Link UG Lines x3

Abandoned MCNC UG Line

Proposed PNG Gas Line

Existing MCNC UG Lines are Abandoned Unless Otherwise Noted on Plans (UBO-2 and UBO-5)

Crystal Broadband Has UG Lines and Pedestals Throughout the Project that Are Abandoned.

Century Link's Relo Drawing has existing lines shown not matching the field survey file. Existing Century Link UG lines are shown in approx. location. For information only.

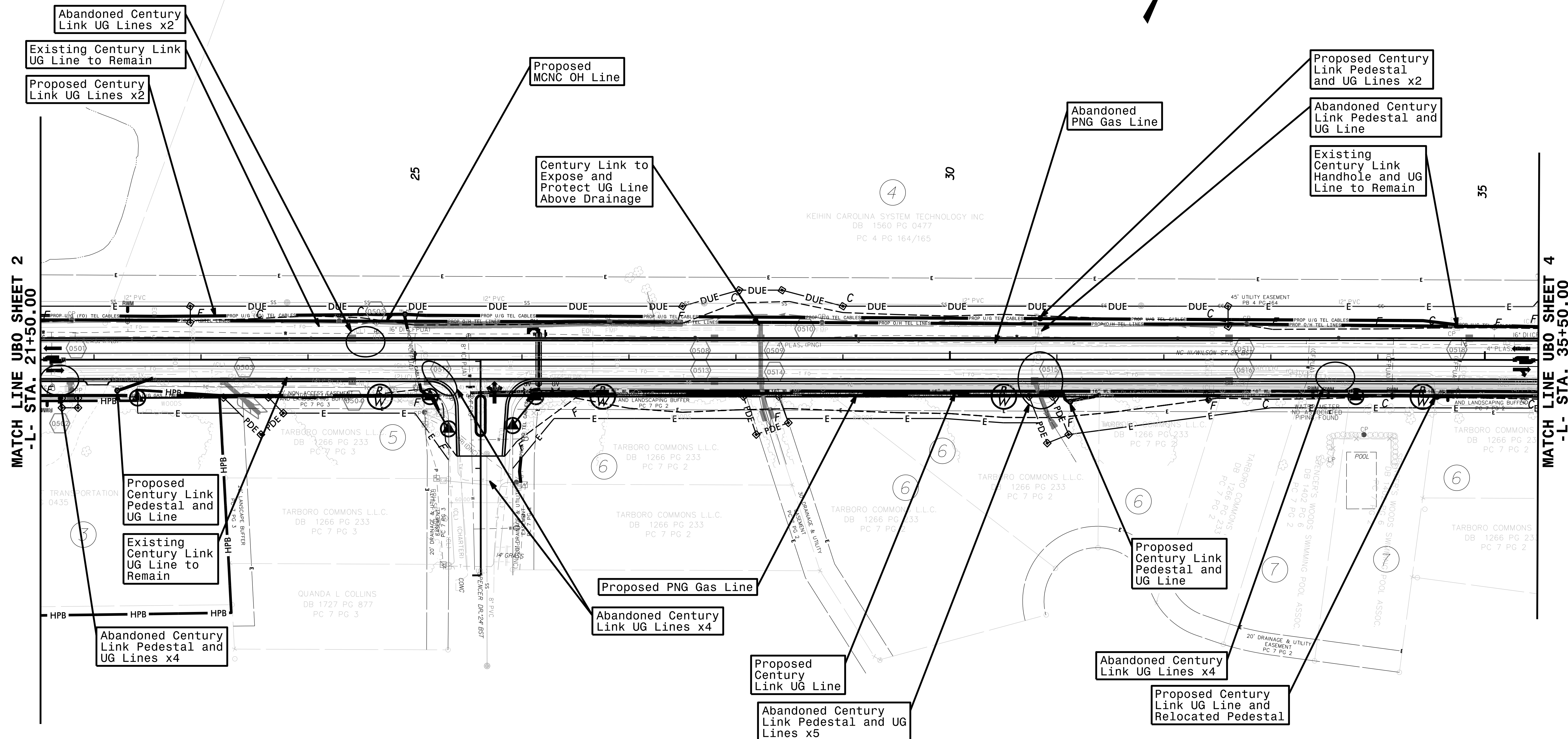
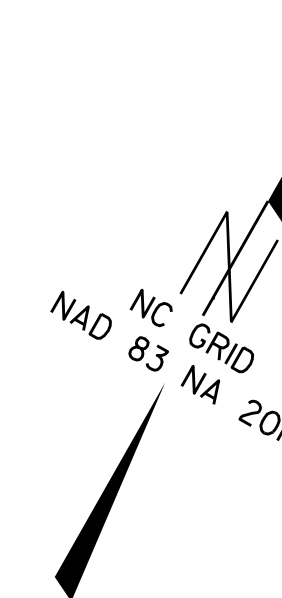
The Majority of Sudden Link Facilities Are OH with the Exception of One Main Line Being UG at Intersection of NC-111 and Barlow (UBO 9). UG Service Drops May Be Within the Project Limits But Not Shown on UBOS.

MATCH LINE UBO SHEET 3  
-L- STA. 21+50.00



### UTILITIES BY OTHERS FOR INFORMATION ONLY

ALL PROPOSED UTILITY WORK SHOWN ON THIS SHEET WILL BE DONE BY OTHERS. NO PAYMENT WILL BE MADE TO THE CONTRACTOR FOR PROPOSED UTILITY WORK SHOWN ON THIS SHEET.



MATCH LINE UBO SHEET 2  
-L- STA. 21+50.00

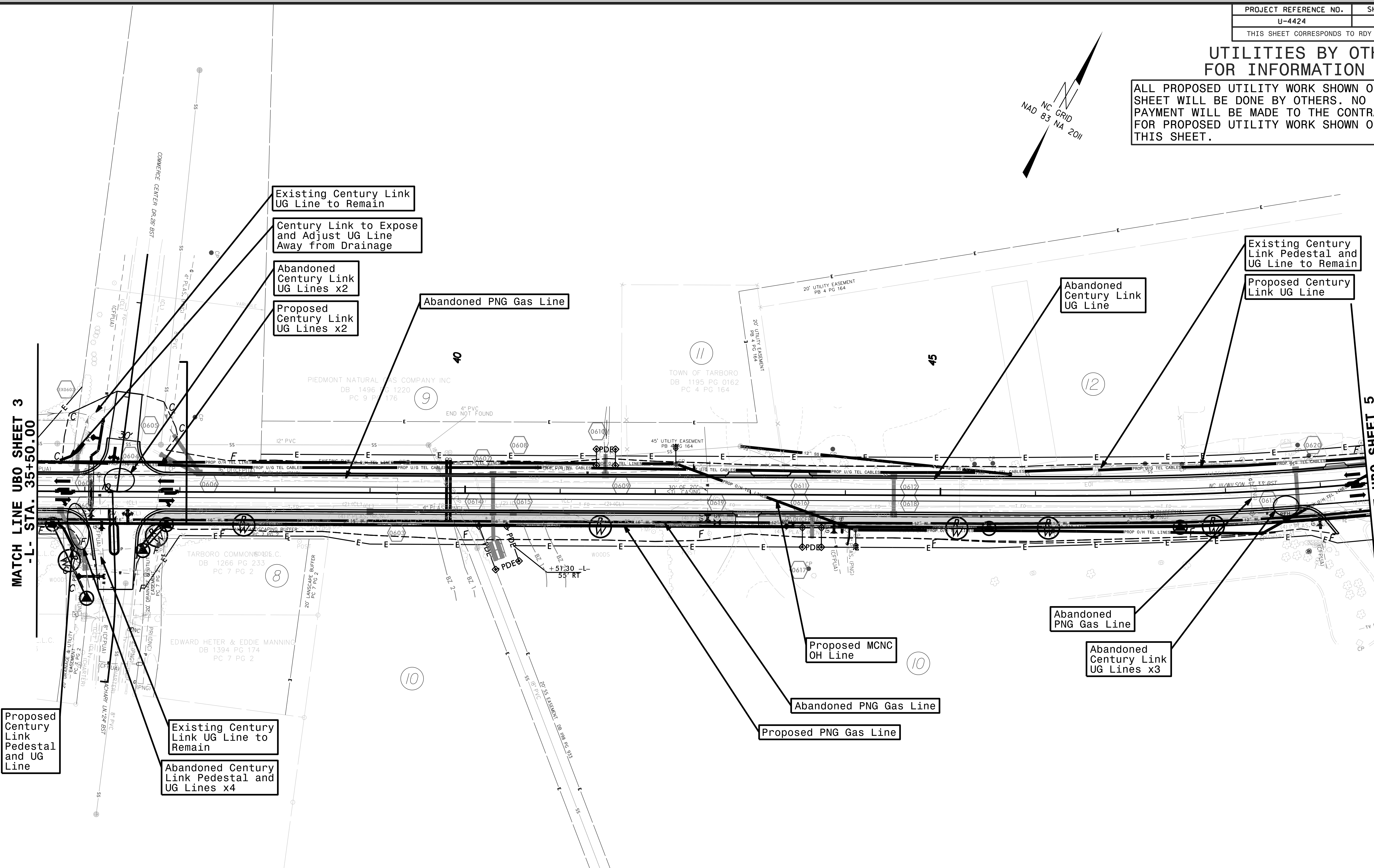
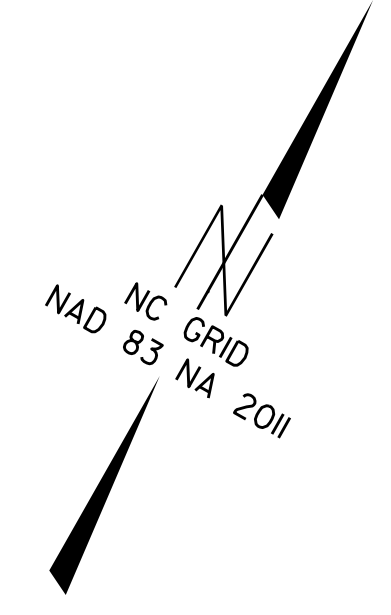
MATCH LINE UBO SHEET 4  
-L- STA. 35+50.00



Utility Coordination Consultants  
P.O.Box 450  
Mineral Springs, NC 28108  
704-844-9093

**UTILITIES BY OTHERS  
FOR INFORMATION ONLY**

ALL PROPOSED UTILITY WORK SHOWN ON THIS SHEET WILL BE DONE BY OTHERS. NO PAYMENT WILL BE MADE TO THE CONTRACTOR FOR PROPOSED UTILITY WORK SHOWN ON THIS SHEET.



MATCH LINE UBO SHEET 3  
-L- STA. 35+50.00

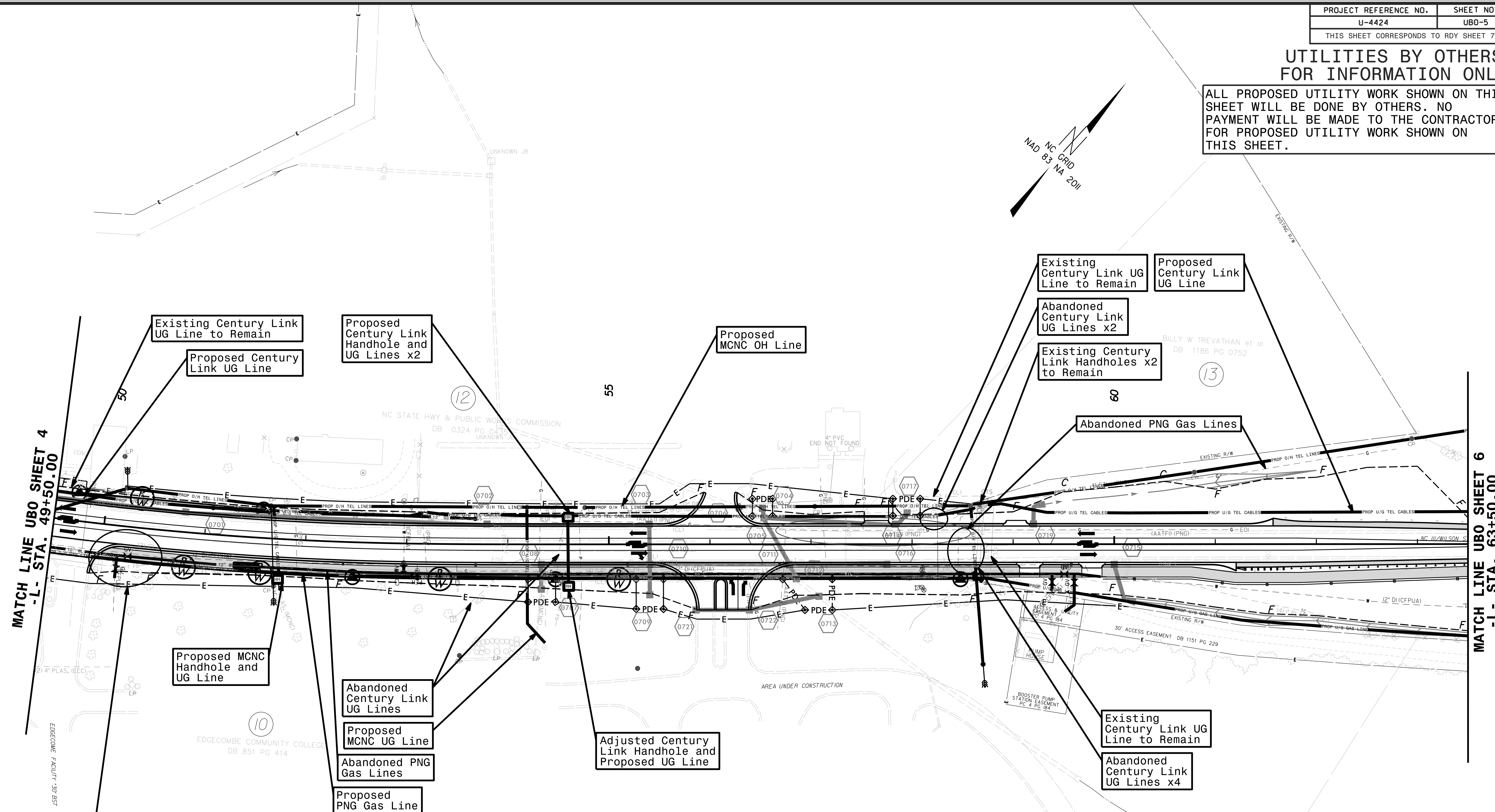
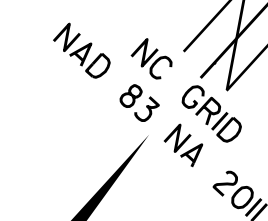
MATCH LINE UBO SHEET 5  
-L- STA. 49+50.00



Utility Coordination Consultants  
P.O. Box 450  
Mineral Springs, NC 28108  
704-844-9093

### UTILITIES BY OTHERS FOR INFORMATION ONLY

ALL PROPOSED UTILITY WORK SHOWN ON THIS SHEET WILL BE DONE BY OTHERS. NO PAYMENT WILL BE MADE TO THE CONTRACTOR FOR PROPOSED UTILITY WORK SHOWN ON THIS SHEET.

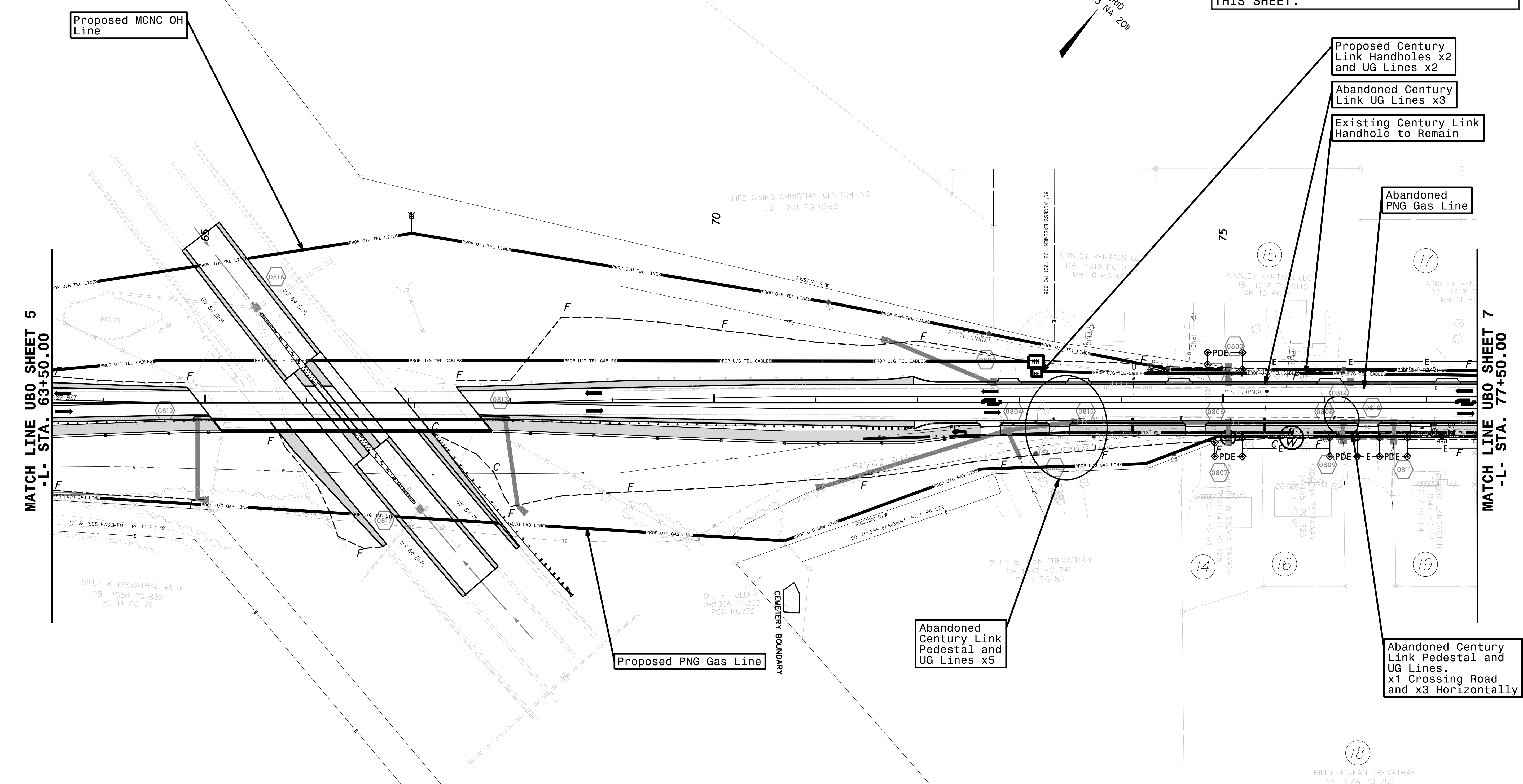
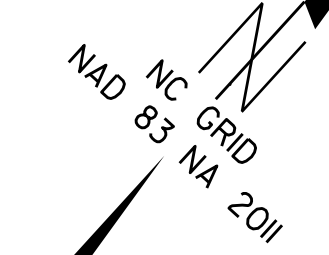


Utility Coordination Consultants  
P.O.Box 450  
Mineral Springs, NC 28108  
704-844-9093



### UTILITIES BY OTHERS FOR INFORMATION ONLY

ALL PROPOSED UTILITY WORK SHOWN ON THIS SHEET WILL BE DONE BY OTHERS. NO PAYMENT WILL BE MADE TO THE CONTRACTOR FOR PROPOSED UTILITY WORK SHOWN ON THIS SHEET.



Proposed MCNC OH Line

Proposed Century Link Handholes x2 and UG Lines x2

Abandoned Century Link UG Lines x3

Existing Century Link Handhole to Remain

Abandoned PNG Gas Line

Proposed PNG Gas Line

Abandoned Century Link Pedestal and UG Lines x5

Abandoned Century Link Pedestal and UG Lines. x1 Crossing Road and x3 Horizontally

MATCH LINE UBO SHEET 5  
-L- STA. 63+50.00

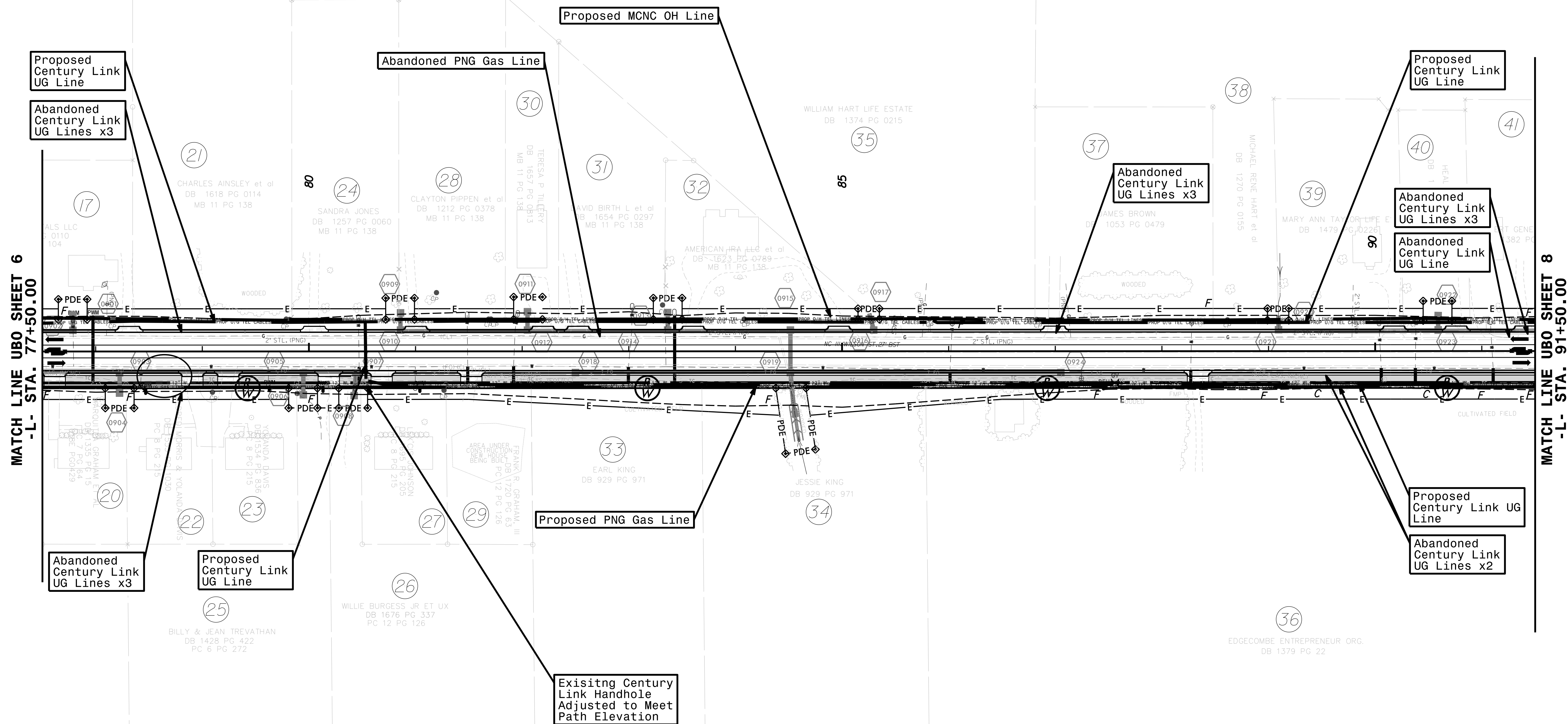
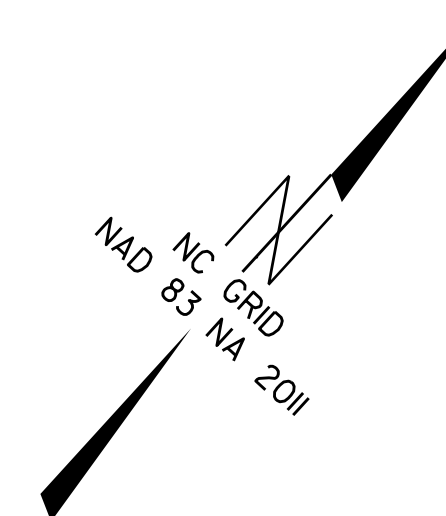
MATCH LINE UBO SHEET 7  
-L- STA. 77+50.00

18  
BILLY & JEAN TREVATHAN  
DB 1186 PG 752  
PC 6 PG 272

**UCC**  
Utility Coordination Consultants  
P.O.Box 450  
Mineral Springs, NC 28108  
704-844-9093

### UTILITIES BY OTHERS FOR INFORMATION ONLY

ALL PROPOSED UTILITY WORK SHOWN ON THIS SHEET WILL BE DONE BY OTHERS. NO PAYMENT WILL BE MADE TO THE CONTRACTOR FOR PROPOSED UTILITY WORK SHOWN ON THIS SHEET.



MATCH LINE UBO SHEET 6  
-L- STA. 77+50.00

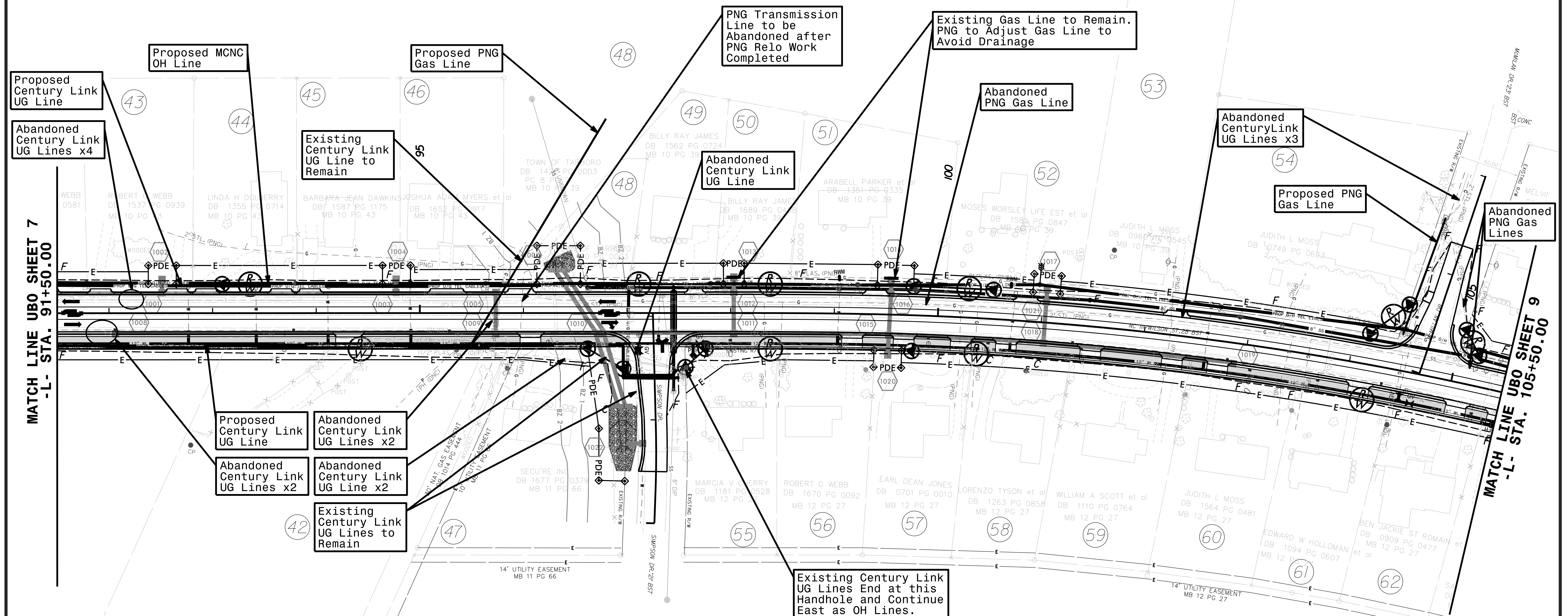
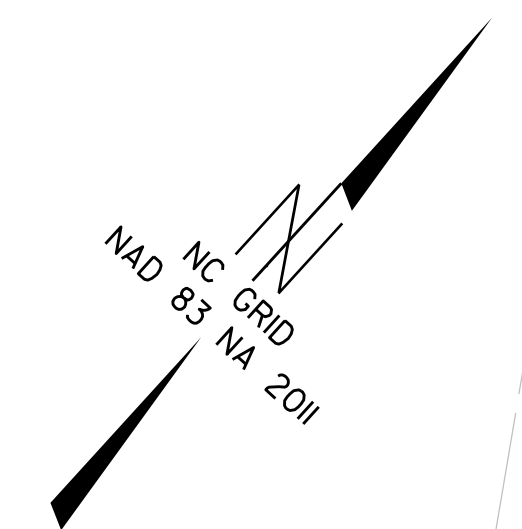
MATCH LINE UBO SHEET 8  
-L- STA. 91+50.00

**UCC**

Utility Coordination Consultants  
P.O. Box 450  
Mineral Springs, NC 28108  
704-844-9093

**UTILITIES BY OTHERS  
FOR INFORMATION ONLY**

ALL PROPOSED UTILITY WORK SHOWN ON THIS SHEET WILL BE DONE BY OTHERS. NO PAYMENT WILL BE MADE TO THE CONTRACTOR FOR PROPOSED UTILITY WORK SHOWN ON THIS SHEET.

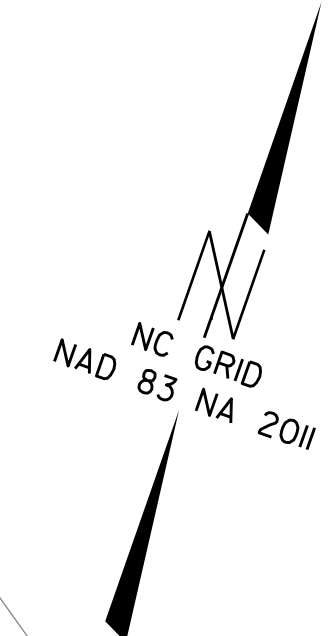


Utility Coordination Consultants  
P.O. Box 450  
Mineral Springs, NC 28108  
704-844-9093



### UTILITIES BY OTHERS FOR INFORMATION ONLY

ALL PROPOSED UTILITY WORK SHOWN ON THIS SHEET WILL BE DONE BY OTHERS. NO PAYMENT WILL BE MADE TO THE CONTRACTOR FOR PROPOSED UTILITY WORK SHOWN ON THIS SHEET.



Existing 8" Plastic PNG Line to Remain. PNG to Adjust Gas Line to Avoid Drainage

Abandoned PNG Gas Lines

Abandoned Century Link UG Line

MATCH LINE UBO SHEET 8  
-L- STA. 105+50.00

Existing Century Link Pole to be Relocated

Proposed Century Link Pole with Brace Extension to Support Existing OH Line

Proposed PNG Gas Line

Proposed Century Link UG Line

Proposed MCNC OH Line

Existing Century Link UG Lines to Remain

Abandoned Century Link UG Line

Proposed Tarboro Electric Pole Attaching: Century Link, Sudden Link

Removed Tarboro Electric Pole Attached: Century Link, Sudden Link

Proposed Sudden Link UG Line

Existing Sudden Link UG Line to be Abandoned

Abandoned PNG Gas Lines

Proposed PNG Gas Line

Proposed Century Link Pedestal and UG Line

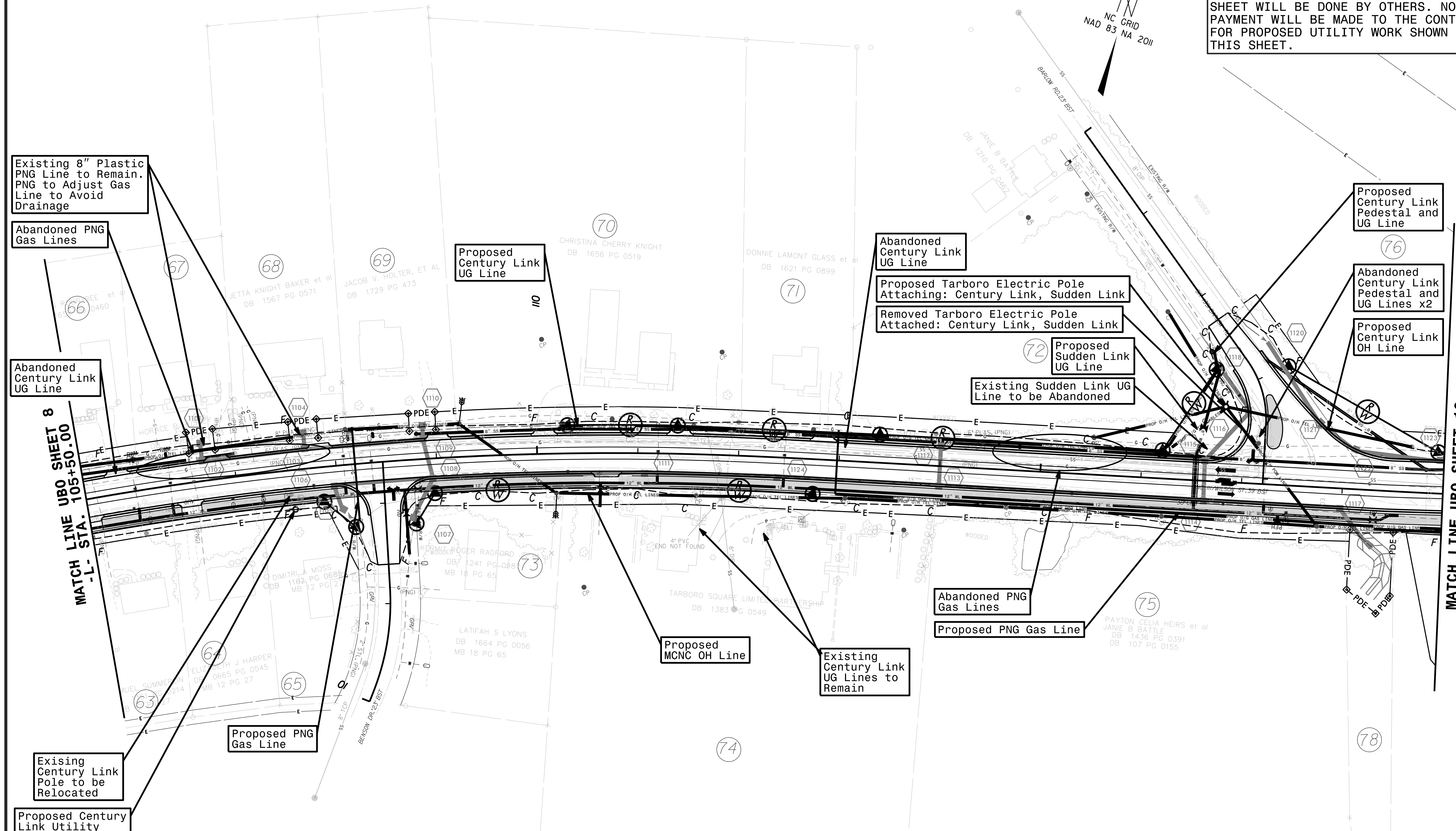
Abandoned Century Link Pedestal and UG Lines x2

Proposed Century Link OH Line

MATCH LINE UBO SHEET 10  
-L- STA. 119+00.00

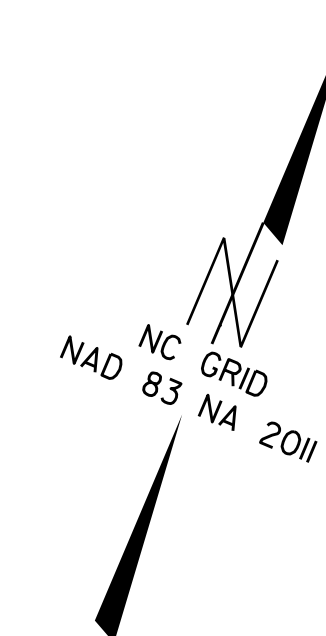
**UCC**

Utility Coordination Consultants  
P.O. Box 450  
Mineral Springs, NC 28108  
704-844-9093



### UTILITIES BY OTHERS FOR INFORMATION ONLY

ALL PROPOSED UTILITY WORK SHOWN ON THIS SHEET WILL BE DONE BY OTHERS. NO PAYMENT WILL BE MADE TO THE CONTRACTOR FOR PROPOSED UTILITY WORK SHOWN ON THIS SHEET.



MATCH LINE UBO SHEET 9  
-L- STA. 119+00.00

MATCH LINE UBO SHEET 11  
-L- STA. 131+00.00

PNG Gas Lines x3 to be Abandoned Before Project Begins

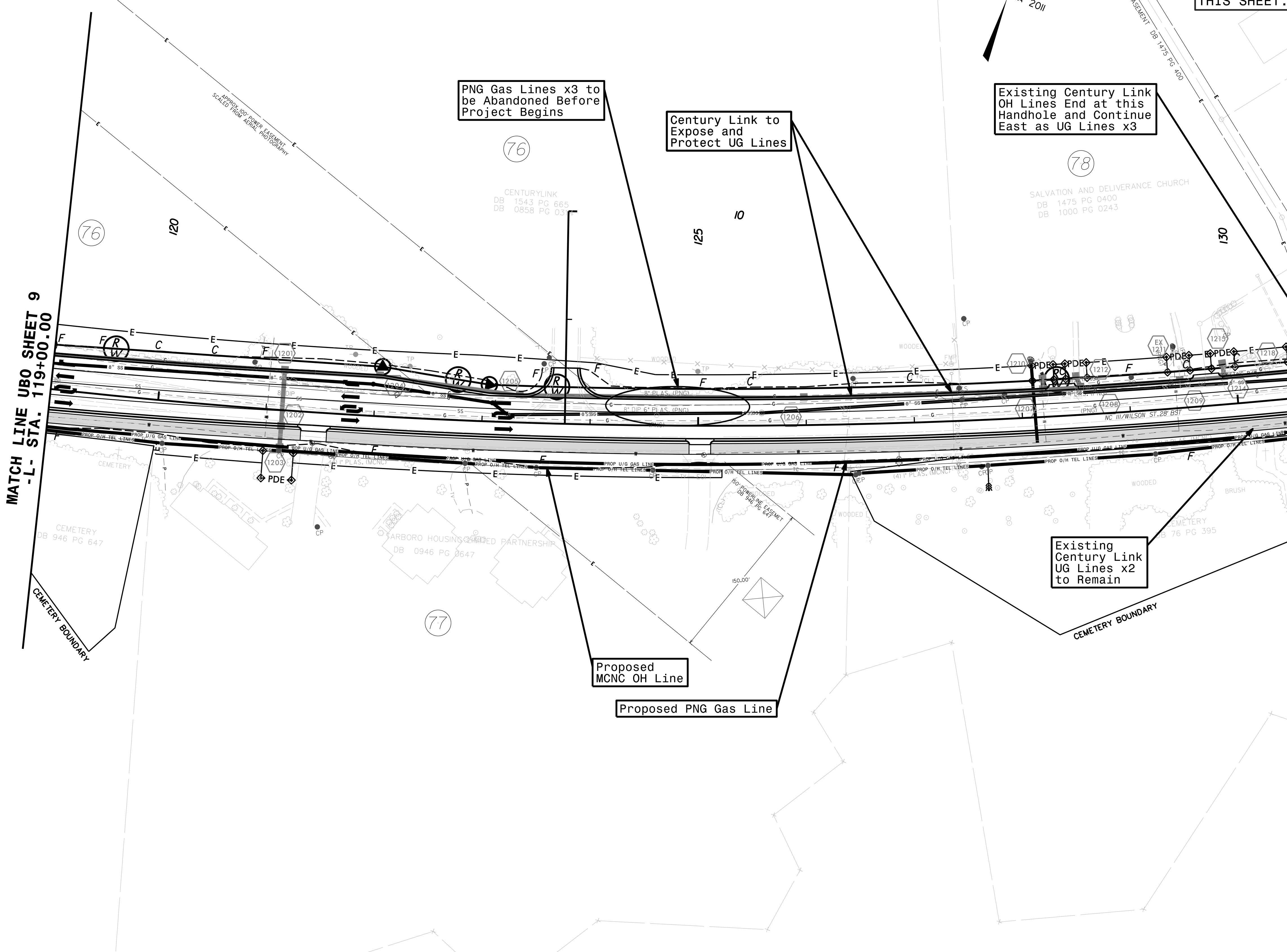
Century Link to Expose and Protect UG Lines

Existing Century Link OH Lines End at this Handhole and Continue East as UG Lines x3

Existing Century Link UG Lines x2 to Remain

Proposed MCNC OH Line

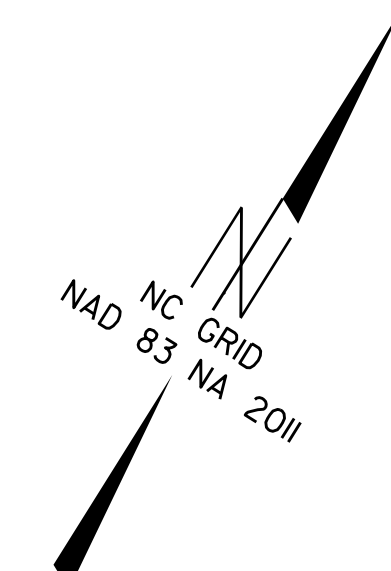
Proposed PNG Gas Line





### UTILITIES BY OTHERS FOR INFORMATION ONLY

ALL PROPOSED UTILITY WORK SHOWN ON THIS SHEET WILL BE DONE BY OTHERS. NO PAYMENT WILL BE MADE TO THE CONTRACTOR FOR PROPOSED UTILITY WORK SHOWN ON THIS SHEET.



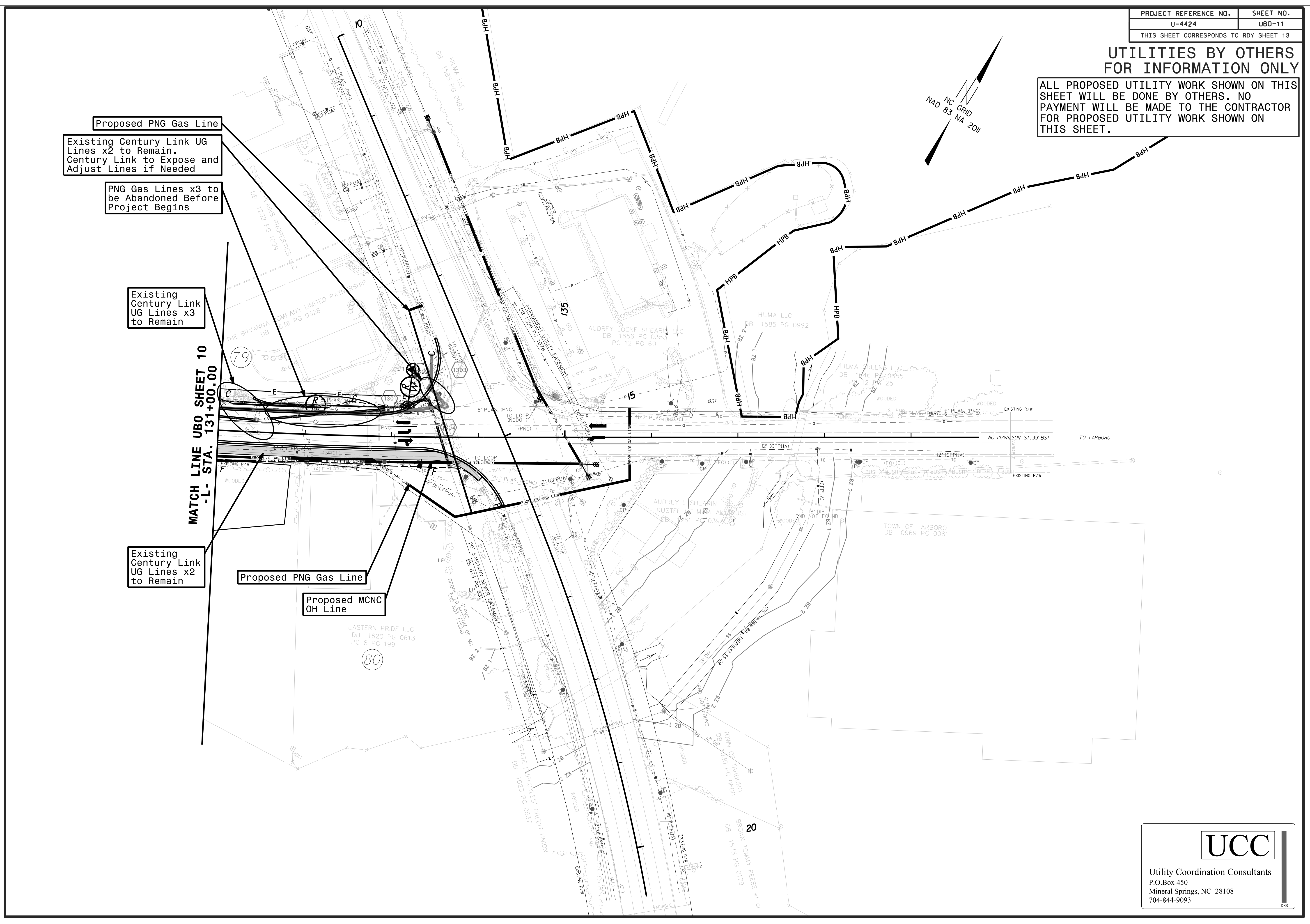
Proposed PNG Gas Line  
Existing Century Link UG Lines x2 to Remain. Century Link to Expose and Adjust Lines if Needed  
PNG Gas Lines x3 to be Abandoned Before Project Begins

Existing Century Link UG Lines x3 to Remain

Existing Century Link UG Lines x2 to Remain

Proposed PNG Gas Line  
Proposed MCNC OH Line

MATCH LINE UBO SHEET 10  
-L- STA. 131+00.00



Utility Coordination Consultants  
P.O.Box 450  
Mineral Springs, NC 28108  
704-844-9093