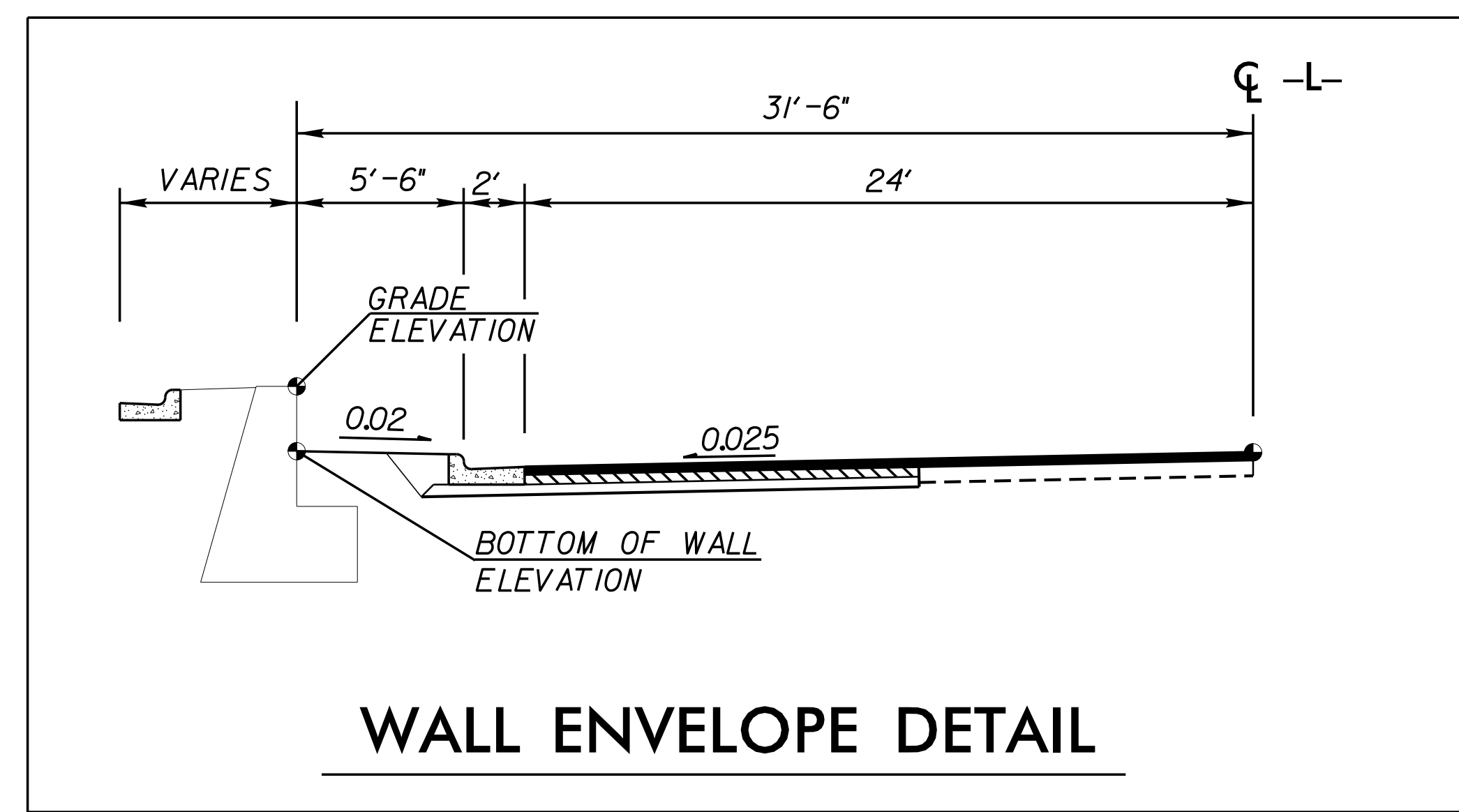


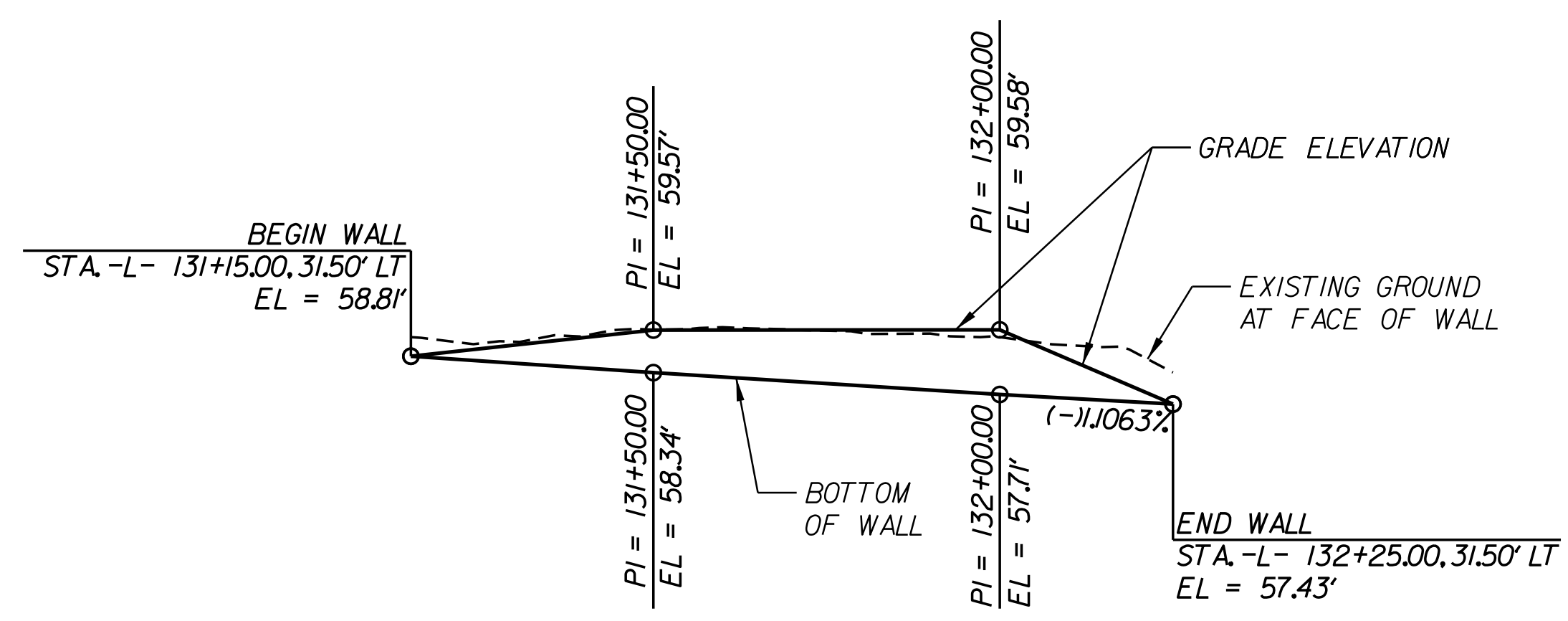
-L- CURVE DATA
 PI Sta 126+29.84
 $\Delta = 15^{\circ} 58' 30''$ (LT)
 $D = 1^{\circ} 01' 20.0''$
 $L = 1,562.77'$
 $T = 786.49'$
 $R = 5,605.00'$
 $e = 2.5\%$
 RunOff = 75'
 $D_s = 50$ MPH

PLAN VIEW FOR RETAINING WALL NO. 1
 NOT TO SCALE



WALL ENVELOPE DETAIL

ESTIMATED CIP GRVITY RETAINING WALL QUANTITY	
CIP GRAVITY RETAINING WALL NO. 1	250 SF



WALL ENVELOPE FOR RETAINING WALL NO. 1
 THE WALL ENVELOPE DOES NOT ACCURATELY DEPICT THE FACE OF WALL

PROJECT NO.: 39062.1.2 (U-4424)
 EDGEcombe COUNTY
 STATION: -L- 131+15
 SHEET 1 OF 2

NORTH CAROLINA
 DEPARTMENT OF TRANSPORTATION
 DIVISION OF HIGHWAYS

GEOTECHNICAL
 ENGINEERING UNIT

CIP GRAVITY RETAINING WALL
 PLAN VIEW AND WALL ENVELOPE

REVISIONS					
NO.	BY	DATE	NO.	BY	DATE
1			3		
2			4		

SHEET NO. W-1