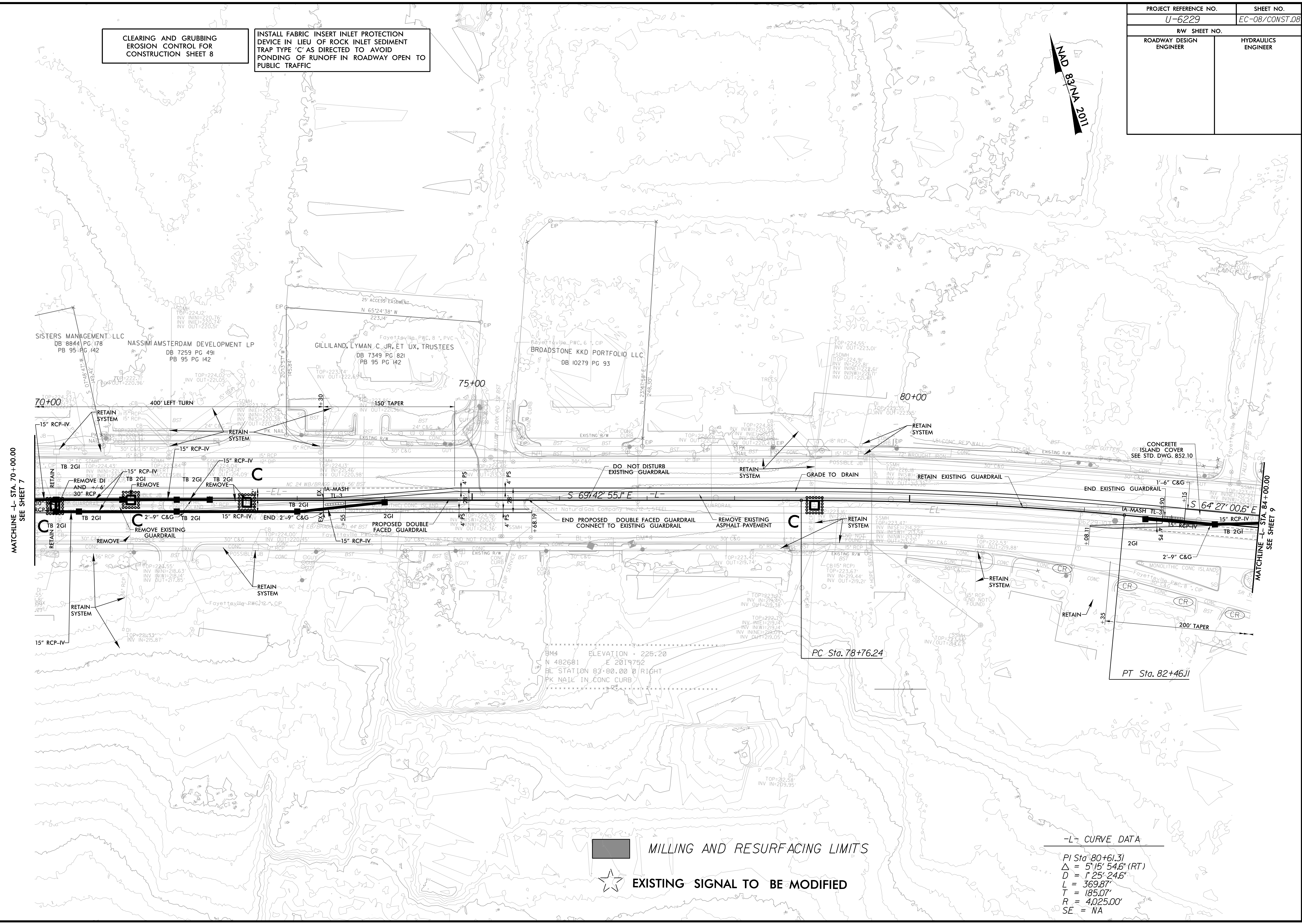
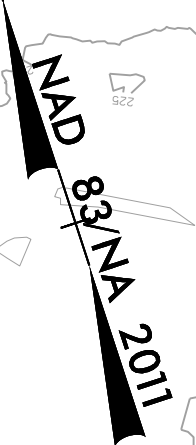


PROJECT REFERENCE NO.	SHEET NO.
U-6229	EC-08/CONST.08
RW SHEET NO.	
ROADWAY DESIGN ENGINEER	HYDRAULICS ENGINEER

CLEARING AND GRUBBING EROSION CONTROL FOR CONSTRUCTION SHEET 8

INSTALL FABRIC INSERT INLET PROTECTION DEVICE IN LIEU OF ROCK INLET SEDIMENT TRAP TYPE 'C' AS DIRECTED TO AVOID PONDING OF RUNOFF IN ROADWAY OPEN TO PUBLIC TRAFFIC



MATCHLINE - L - STA. 70+00.00  
SEE SHEET 7

MATCHLINE - L - STA. 84+00.00  
SEE SHEET 9

█ MILLING AND RESURFACING LIMITS

☆ EXISTING SIGNAL TO BE MODIFIED

-L- CURVE DATA

PI Sta. 80+61.31  
 $\Delta = 5^{\circ}15'54.6''$  (RT)  
 $D = 1^{\circ}25'24.6''$   
 $L = 369.87'$   
 $T = 185.07'$   
 $R = 4,025.00'$   
 $SE = NA$

8/17/99  
  
 I:\2016 AM Environmental\Design\PSH\U6229\_REU\_EC\_PSH08.CG.dgn  
 11/29/16 AM  
 I:\2016 AM Environmental\Design\PSH\U6229\_REU\_EC\_PSH08.CG.dgn