

APPROVED: _____
 DATE: _____

SEAL

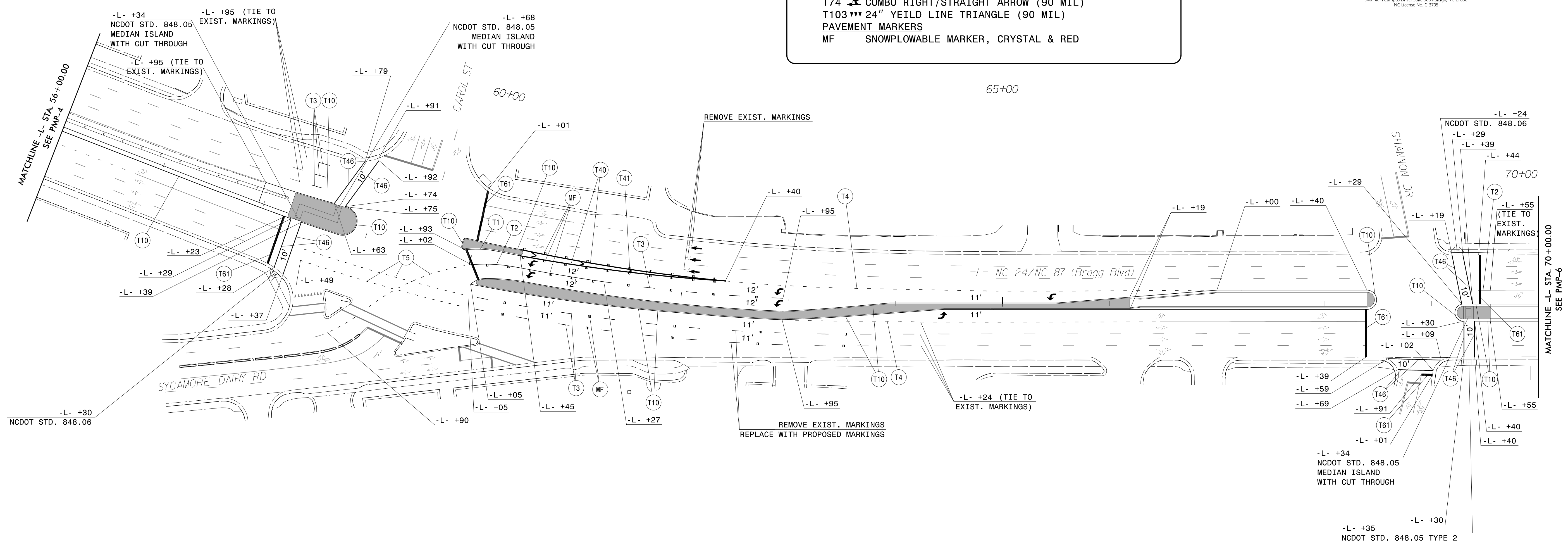
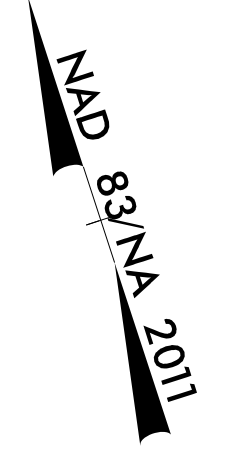
3/22/2023

**DOCUMENT NOT CONSIDERED FINAL
 UNLESS ALL SIGNATURES COMPLETED**



PAVEMENT MARKING SCHEDULE

SYMBOL	DESCRIPTION
THERMOPLASTIC	
T1	WHITE EDGELINE (4", 90 MIL)
T2	WHITE SOLID LANE LINE (4", 90 MIL)
T3	10 FT. WHITE SKIP (4", 90 MIL)
T4	3 FT. - 9 FT./SP WHITE MINISKIP (4", 90 MIL)
T5	2 FT. - 6 FT./SP WHITE MINISKIP (4", 90 MIL)
T10	YELLOW EDGELINE (4", 90 MIL)
T14	2 FT. - 6 FT./SP YELLOW MINISKIP (4", 90 MIL)
T40	WHITE GORELINE (8", 90 MIL)
T41	WHITE DIAGONAL (8", 90 MIL)
T46	WHITE CROSSWALK LINE (8", 90 MIL)
T61	WHITE STOPBAR (24", 90 MIL)
T70	← LEFT TURN ARROW (90 MIL)
T72	→ STRAIGHT ARROW (90 MIL)
T74	↘ COMBO RIGHT/STRAIGHT ARROW (90 MIL)
T103	▲ 24" YEILD LINE TRIANGLE (90 MIL)
PAVEMENT MARKERS	
MF	SNOWPLOWABLE MARKER, CRYSTAL & RED



3/22/2023
 R:\Traffic\PavementMarking\U6229_pmp_psh05.dgn
 User:rsargent

PAVEMENT MARKING DETAIL