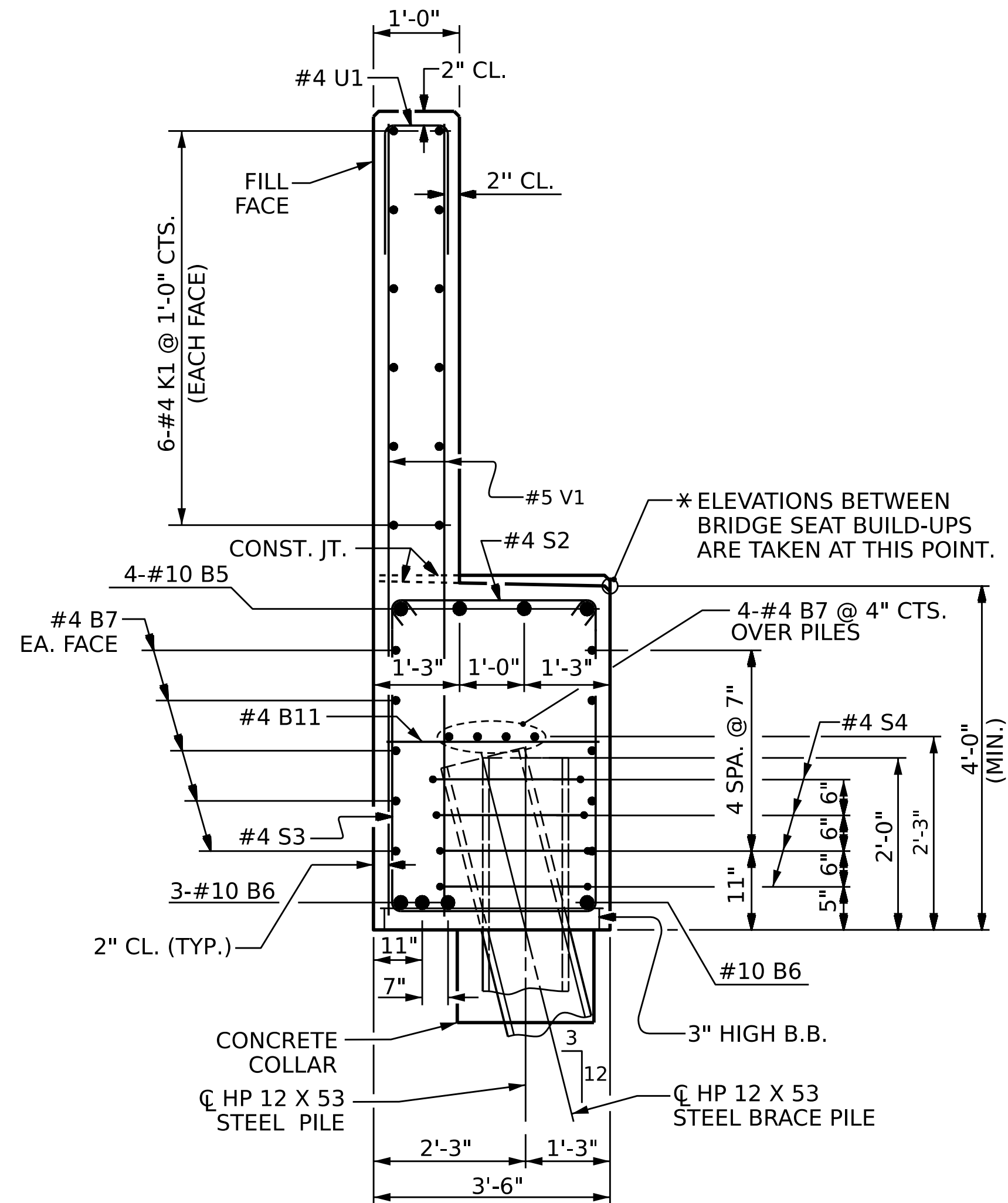


BAGGED STONE AND PIPE SHALL BE PLACED IMMEDIATELY AFTER COMPLETION OF END BENT EXCAVATION. PIPE MAY BE EITHER CONCRETE, CORRUGATED STEEL, CORRUGATED ALUMINUM ALLOY, OR CORRUGATED PLASTIC. PERFORATED PIPE WILL NOT BE ALLOWED.

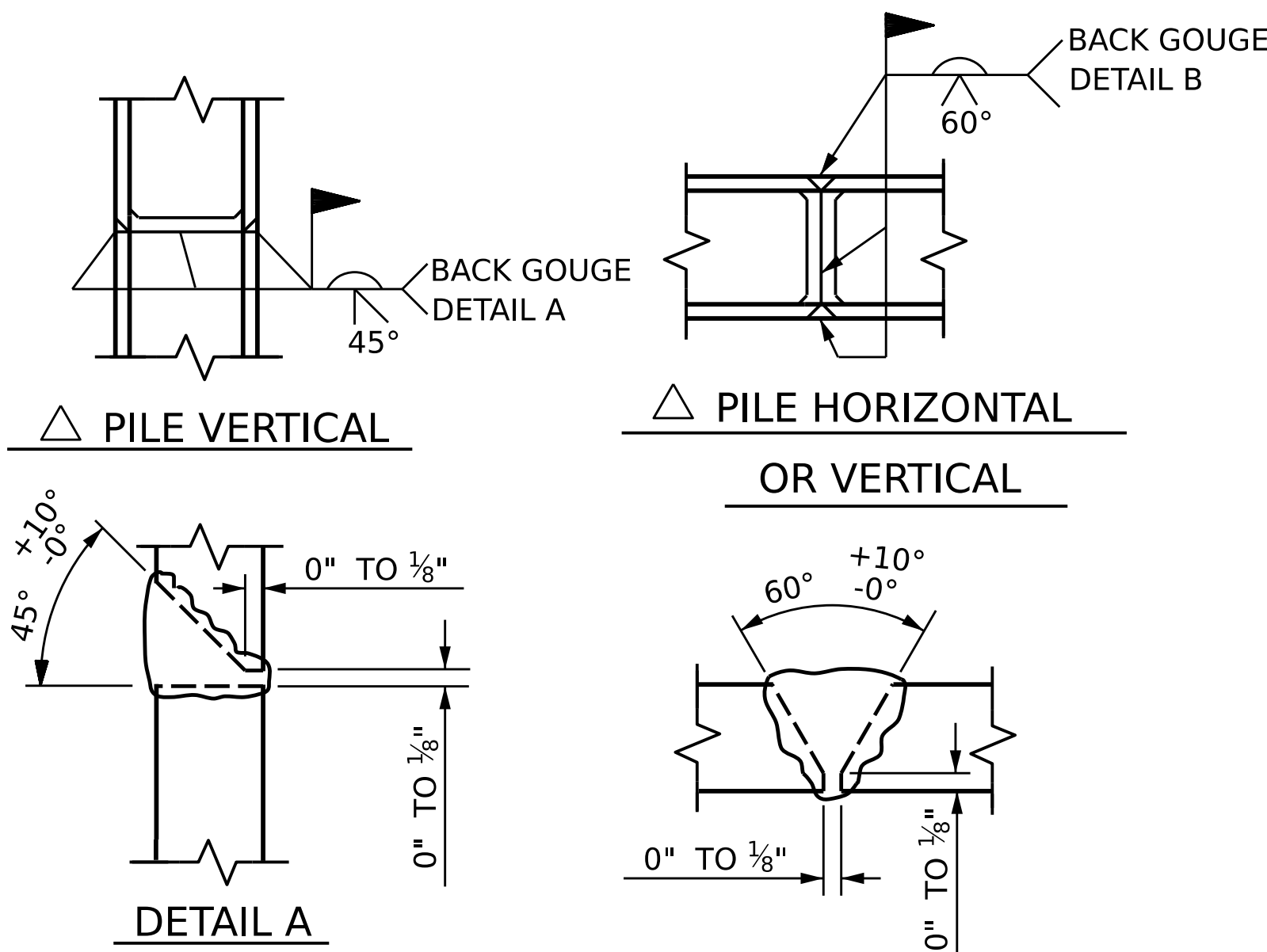
BAGGED STONE SHALL REMAIN IN PLACE UNTIL THE ENGINEER DIRECTS THAT IT BE REMOVED. THE CONTRACTOR SHALL REMOVE AND DISPOSE OF SILT ACCUMULATIONS AT BAGGED STONE WHEN SO DIRECTED BY THE ENGINEER. BAGS SHALL BE REMOVED AND REPLACED WHENEVER THE ENGINEER DETERMINES THAT THEY HAVE DETERIORATED AND LOST THEIR EFFECTIVENESS.

NO SEPARATE PAYMENT WILL BE MADE FOR THIS WORK AND THE ENTIRE COST OF THIS WORK SHALL BE INCLUDED IN THE UNIT CONTRACT PRICE BID FOR THE SEVERAL PAY ITEMS.

TEMPORARY DRAINAGE AT END BENT

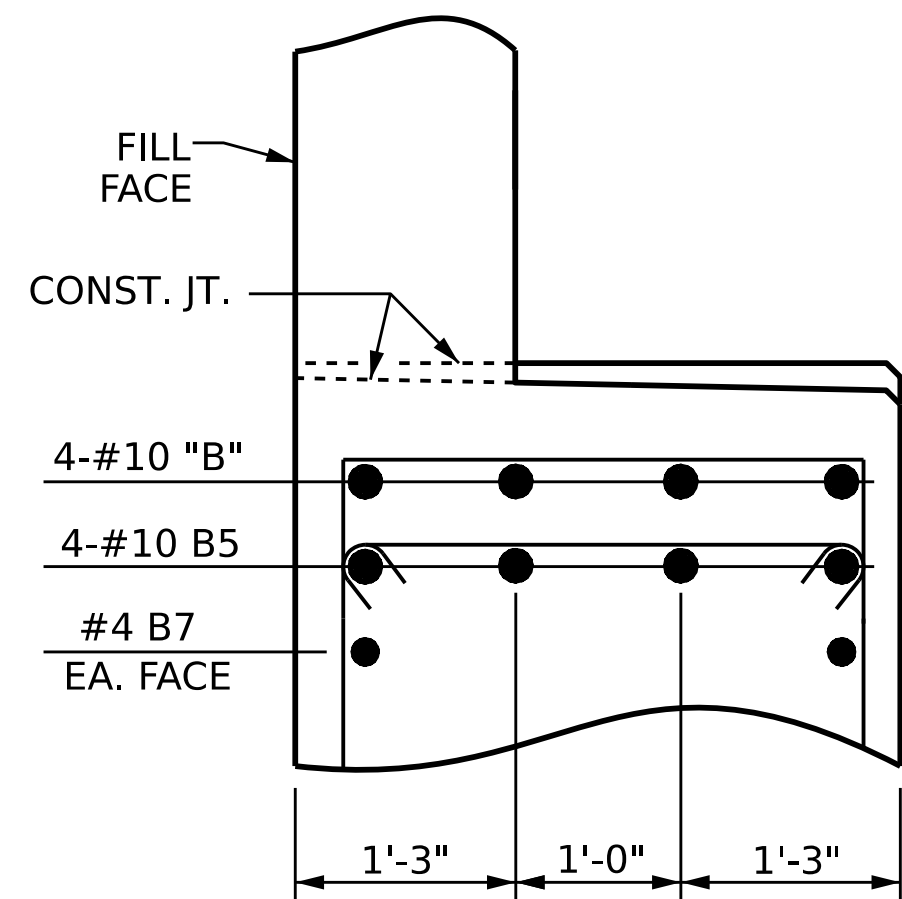


SECTION A-A

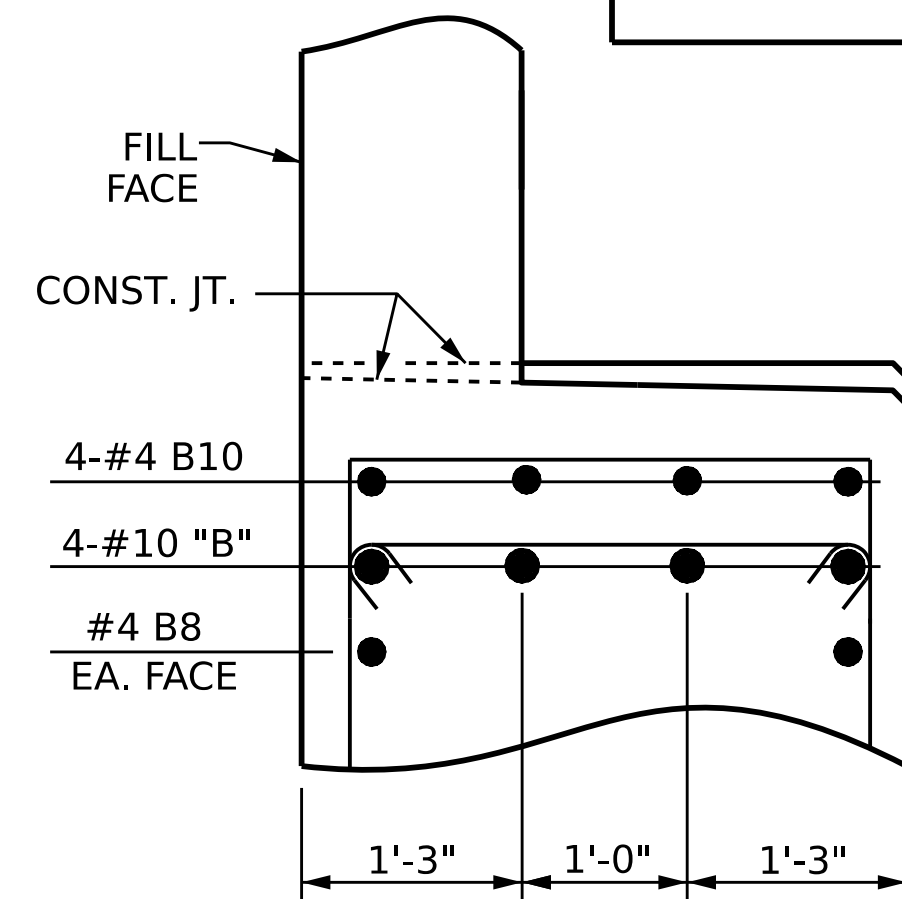


△ POSITION OF PILE DURING WELDING.

PILE SPLICE DETAILS

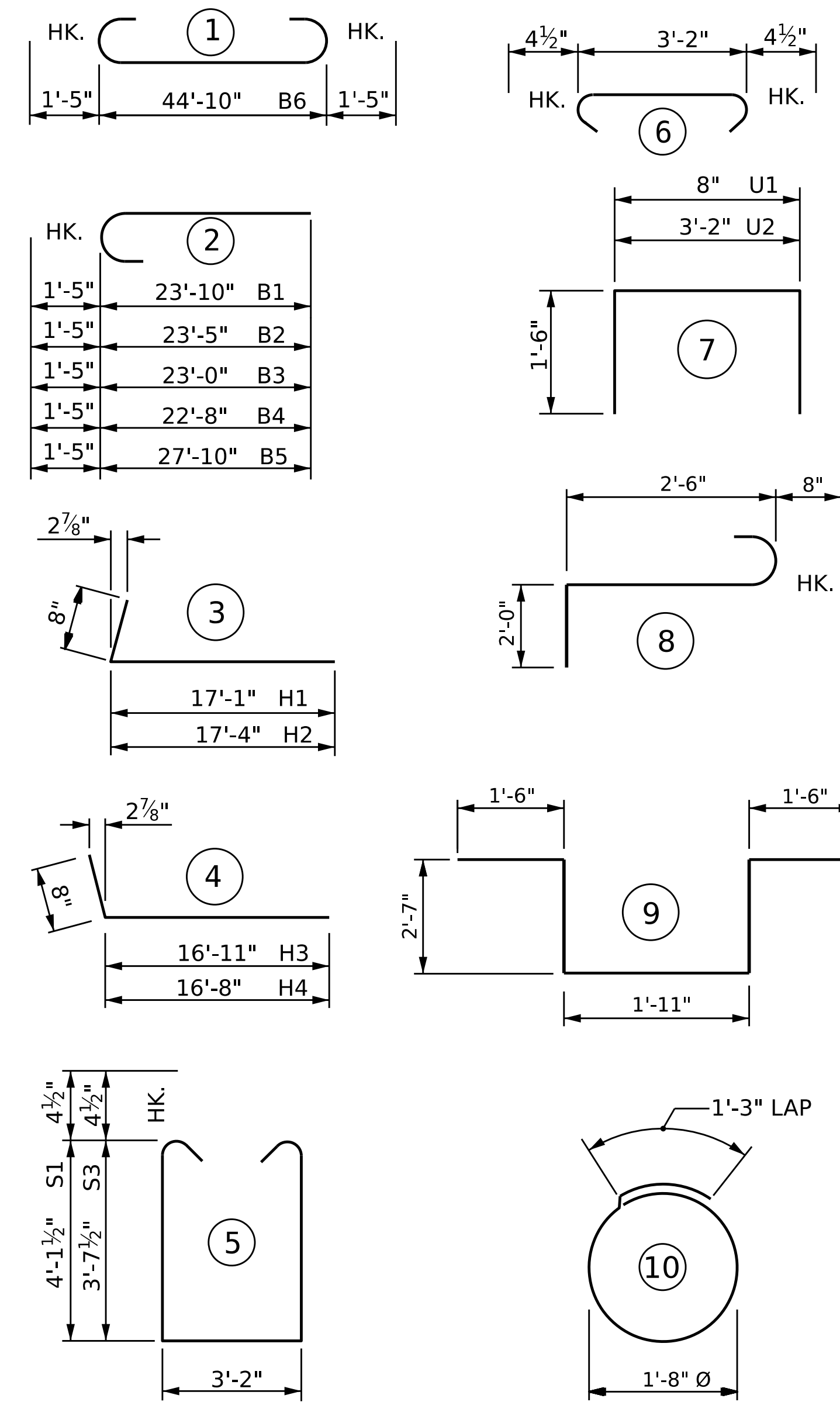


PARTIAL SECTION B-B



PARTIAL SECTION C-C

BAR TYPES



ALL BAR DIMENSIONS ARE OUT TO OUT

BILL OF MATERIAL

END BENT 1					
BAR	NO.	SIZE	TYPE	LENGTH	WEIGHT
B1	1	#10	2	25'-3"	109
B2	1	#10	2	24'-10"	107
B3	1	#10	2	24'-5"	105
B4	1	#10	2	24'-1"	104
B5	4	#10	2	29'-3"	503
B6	4	#10	1	47'-8"	820
B7	28	#4	STR	23'-9"	444
B8	2	#4	STR	20'-4"	27
B9	4	#4	STR	8'-4"	22
B10	8	#4	STR	7'-5"	40
B11	11	#4	STR	3'-2"	23
H1	14	#4	3	17'-9"	166
H2	14	#4	3	18'-0"	168
H3	13	#4	4	17'-7"	153
H4	13	#4	4	17'-4"	151
K1	24	#4	STR	23'-8"	379
K2	8	#4	STR	3'-10"	20
S1	22	#5	5	12'-2"	179
S2	51	#5	6	3'-11"	133
S3	29	#5	5	11'-2"	216
S4	32	#4	10	6'-6"	139
S5	6	#6	8	5'-2"	47
S6	6	#6	9	10'-1"	91
U1	37	#4	7	3'-8"	91
U2	19	#4	7	6'-2"	78
V1	74	#5	STR	9'-11"	765
V2	44	#5	STR	12'-9"	585
V3	42	#5	STR	11'-5"	500

REINFORCING STEEL LBS. 6,167

CLASS A CONCRETE		
POUR #1 (CAP, LOWER WINGS, & COLLARS)	CU. YDS.	36.3
POUR #2 (UPPER WINGS & BACKWALL)	CU. YDS.	20.4
TOTAL	CU. YDS.	56.7

PROJECT NO. B-5721
ROCKINGHAM COUNTY
 STATION: 21+64.00 -L-
 SHEET 3 OF 3



DocuSigned by:
 Francesca Lea
 B79DADB85084EF
 03/23/2023

STATE OF NORTH CAROLINA
 DEPARTMENT OF TRANSPORTATION
 RALEIGH
 SUBSTRUCTURE
 END BENT 1

DRAWN BY : Q. T. NGUYEN DATE : 05/2022
 CHECKED BY : F. LEA DATE : 11/2022
 DESIGN ENGINEER OF RECORD : F. LEA DATE : 04/2022

DOCUMENT NOT CONSIDERED
 FINAL UNLESS ALL
 SIGNATURES COMPLETED

REVISIONS				SHEET NO.
NO.	BY:	DATE:	NO.	DATE:
1			3	
2			4	

TOTAL SHEETS: 31