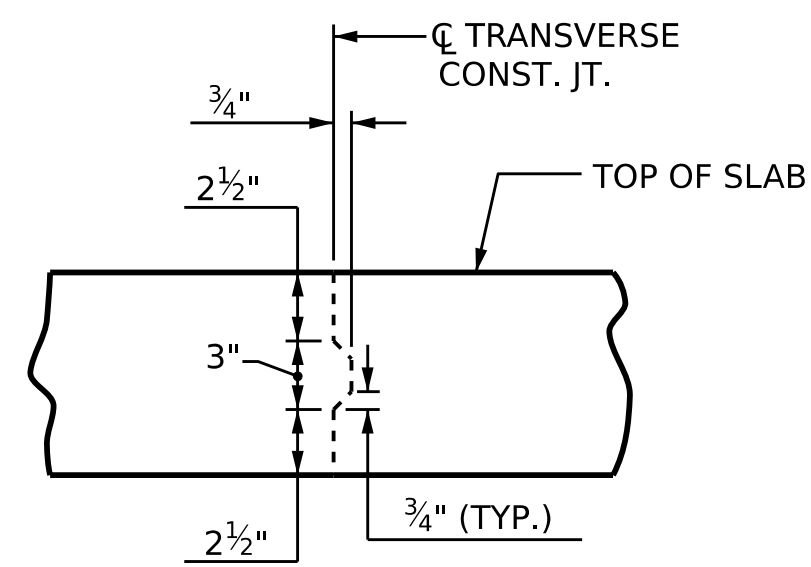


SUPERSTRUCTURE BILL OF MATERIAL						
	CLASS AA CONCRETE		REINFORCING STEEL	EPOXY COATED REINFORCING STEEL		
	( CU. YDS. )			( LBS. )	( LBS. )	
	POUR 1	POUR 2	TOTAL			
SPANS A & B	150.1	201.8	351.9	30,189	31,721	
TOTALS **			351.9	30,189	31,721	

\*\* QUANTITIES FOR BRIDGE RAIL NOT INCLUDED

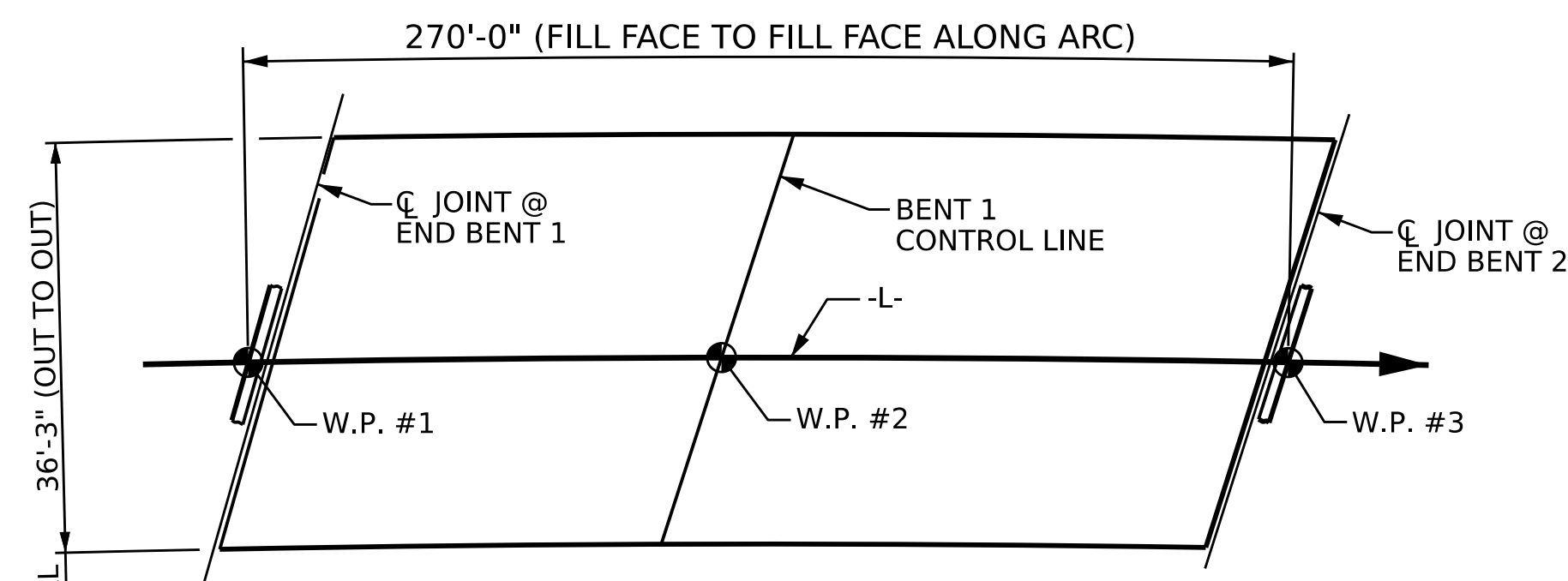
GROOVING BRIDGE FLOORS		
APPROACH SLABS	850	SQ.FT.
BRIDGE DECK	8,024	SQ.FT.
TOTAL	8,874	SQ.FT.

SUPERSTRUCTURE REINFORCING STEEL LENGTHS ARE BASED ON THE FOLLOWING MINIMUM SPLICE LENGTHS					
BAR SIZE	SUPERSTRUCTURE EXCEPT APPROACH SLABS, PARAPET, AND BARRIER RAIL		APPROACH SLABS		PARAPET AND BARRIER RAIL
	EPOXY COATED	UNCOATED	EPOXY COATED	UNCOATED	
#4	1'-11"	1'-7"	1'-11"	1'-7"	2'-6"
#5	2'-5"	2'-0"	2'-5"	2'-0"	3'-1"
#6	2'-10"	2'-5"	3'-7"	2'-5"	3'-8"
#7	4'-2"	2'-9"			
#8	4'-9"	3'-2"			



**TRANSVERSE CONSTRUCTION JOINT DETAIL**

NOTE: REINFORCING STEEL IN SLAB NOT SHOWN. LONGITUDINAL REINFORCING STEEL SHALL BE CONTINUOUS THRU JOINT



LAYOUT FOR COMPUTING AREA REINFORCED CONCRETE DECK SLAB ( SQ. FT. = 9,707 )

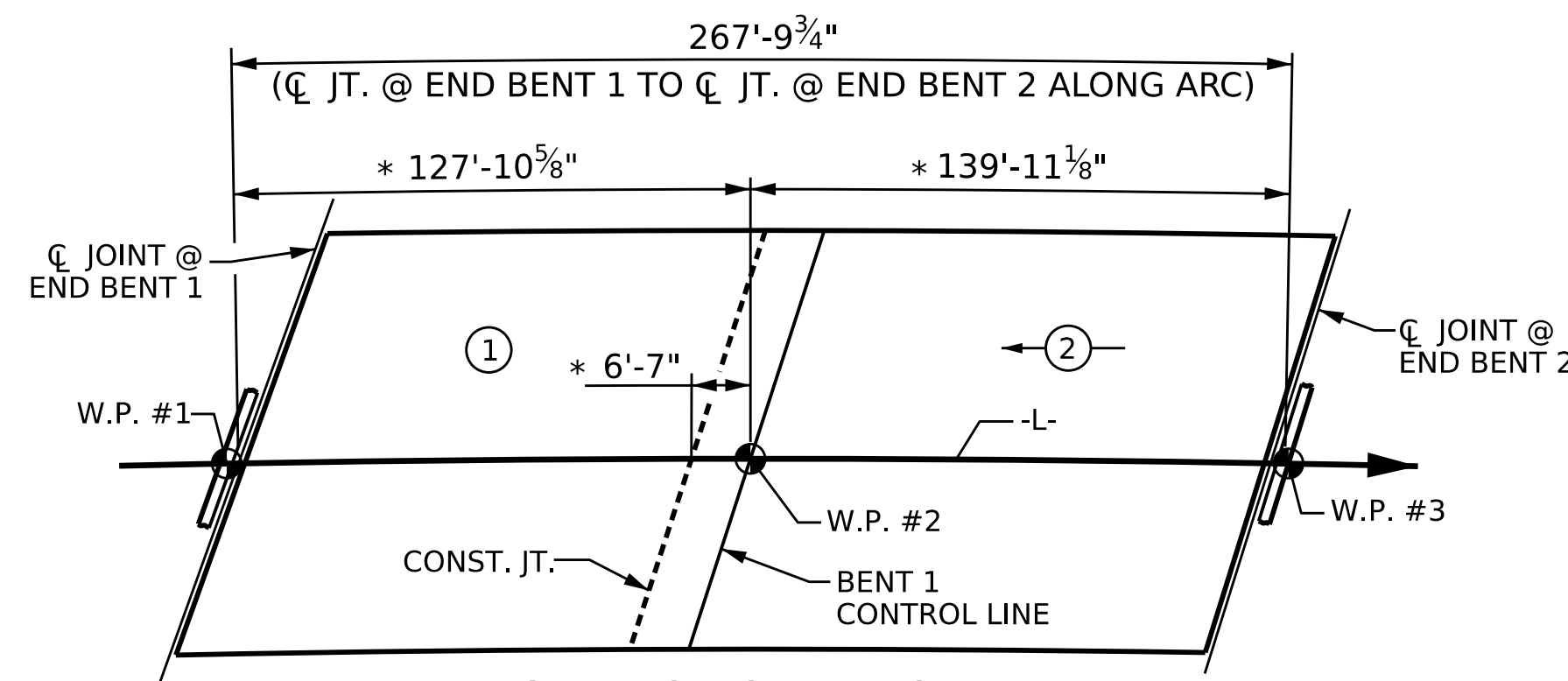
ASSEMBLED BY :	Q. T. NGUYEN	DATE :	07/2022
CHECKED BY :	F. LEA	DATE :	12/2022
DRAWN BY :	JMB 5/87	REV. 10/1/11	MAA/GM
CHECKED BY :	SJD 9/87	REV. 12/17	MAA/THC
		REV. 06/19	BNB/THC

2/16/2023 R:\Structures\Plans\401\_037\_B5721\_SMU\_BM\_S20\_780124.dgn tnguyen1

**BILL OF MATERIAL**

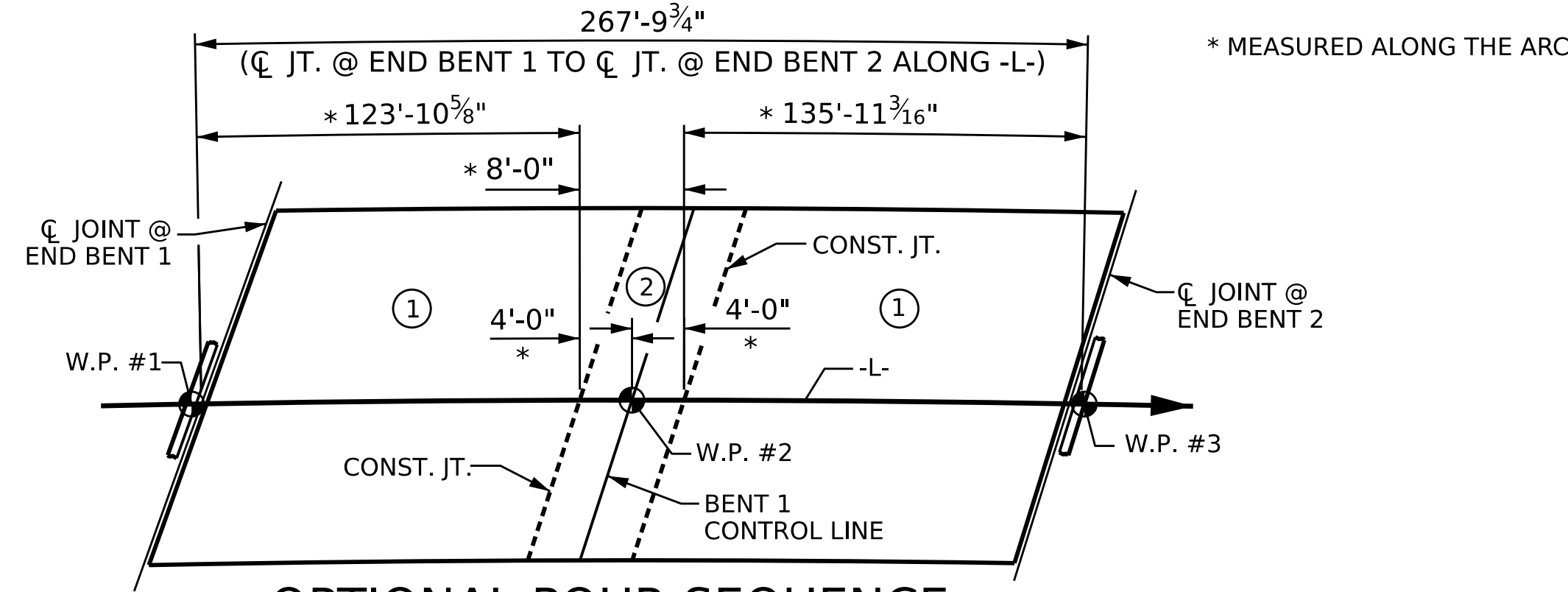
BAR	NO.	SIZE	TYPE	LENGTH	WEIGHT	BAR	NO.	SIZE	TYPE	LENGTH	WEIGHT	BAR	NO.	SIZE	TYPE	LENGTH	WEIGHT
* A1	513	5	STR.	35'-9"	19128	* A139	1	5	STR.	6'-2"	6	A238	1	5	STR.	7'-10"	8
A2	513	5	STR.	35'-9"	19128	* A140	1	5	STR.	4'-6"	5	A239	1	5	STR.	6'-2"	6
						* A141	1	5	STR.	2'-10"	3	A240	1	5	STR.	4'-6"	5
* A101	1	5	STR.	34'-6"	36							A241	1	5	STR.	2'-10"	3
* A102	1	5	STR.	32'-11"	34	A201	1	5	STR.	34'-6"	36	B1	160	5	STR.	55'-2"	9206
* A103	1	5	STR.	31'-4"	33	A202	1	5	STR.	32'-11"	34	* B2	78	4	STR.	30'-0"	1563
* A104	1	5	STR.	29'-9"	31	A203	1	5	STR.	31'-4"	33	* B3	78	7	STR.	33'-2"	5288
* A105	1	5	STR.	28'-1"	29	A204	1	5	STR.	29'-9"	31	* B4	23	7	STR.	40'-9"	1916
* A106	1	5	STR.	26'-6"	28	A205	1	5	STR.	28'-1"	29	* B5	78	4	STR.	32'-10"	1711
* A107	1	5	STR.	24'-11"	26	A206	1	5	STR.	26'-6"	28	* G1	1	5	STR.	38'-3"	40
* A108	1	5	STR.	23'-4"	24	A207	1	5	STR.	24'-11"	26	* G1	1	5	STR.	36'-8"	38
* A109	1	5	STR.	21'-9"	23	A208	1	5	STR.	23'-4"	24	* K1	12	6	STR.	3'-7"	65
* A110	1	5	STR.	20'-1"	21	A209	1	5	STR.	21'-9"	23	* K2	2	8	1	12'-3"	65
* A111	1	5	STR.	18'-6"	19	A210	1	5	STR.	20'-1"	21	* K3	6	8	2	18'-6"	296
* A112	1	5	STR.	16'-11"	18	A211	1	5	STR.	18'-6"	19	* K4	2	8	1	13'-5"	72
* A113	1	5	STR.	15'-4"	16	A212	1	5	STR.	16'-11"	18	K5	8	4	STR.	3'-6"	19
* A114	1	5	STR.	13'-9"	14	A213	1	5	STR.	15'-4"	16	* K6	40	4	STR.	6'-5"	171
* A115	1	5	STR.	12'-1"	13	A214	1	5	STR.	13'-9"	14	K7	12	4	6	4'-9"	38
* A116	1	5	STR.	10'-6"	11	A215	1	5	STR.	12'-1"	13	K8	18	4	7	9'-6"	114
* A117	1	5	STR.	8'-11"	9	A216	1	5	STR.	10'-6"	11	K9	12	6	STR.	3'-4"	60
* A118	1	5	STR.	7'-4"	8	A217	1	5	STR.	8'-11"	9	* K10	2	8	1	11'-10"	63
* A119	1	5	STR.	5'-9"	6	A218	1	5	STR.	7'-4"	8	* K11	6	8	2	17'-11"	287
* A120	1	5	STR.	4'-1"	4	A219	1	5	STR.	5'-9"	6	* K12	2	8	1	12'-11"	69
* A121	1	5	STR.	2'-6"	3	A220	1	5	STR.	4'-1"	4	S1	32	5	4	6'-0"	200
* A122	1	5	STR.	34'-7"	36	A221	1	5	STR.	2'-6"	3	S2	32	4	3	4'-5"	94
* A123	1	5	STR.	32'-11"	34	A222	1	5	STR.	34'-7"	36	S3	120	4	5	3'-7"	287
* A124	1	5	STR.	31'-3"	33	A223	1	5	STR.	32'-11"	34	U1	16	4	8	19'-8"	210
* A125	1	5	STR.	29'-7"	31	A224	1	5	STR.	31'-3"	33	U2	8	4	8	17'-8"	94
* A126	1	5	STR.	27'-11"	29	A225	1	5	STR.	29'-7"	31						
* A127	1	5	STR.	26'-3"	27	A226	1	5	STR.	27'-11"	29						
* A128	1	5	STR.	24'-7"	26	A227	1	5	STR.	26'-3"	27						
* A129	1	5	STR.	22'-11"	24	A228	1	5	STR.	24'-7"	26						
* A130	1	5	STR.	21'-3"	22	A229	1	5	STR.	22'-11"	24						
* A131	1	5	STR.	19'-7"	20	A230	1	5	STR.	21'-3"	22						
* A132	1	5	STR.	17'-11"	19	A231	1	5	STR.	19'-7"	20						
* A133	1	5	STR.	16'-3"	17	A232	1	5	STR.	17'-11"	19						
* A134	1	5	STR.	14'-7"	15	A233	1	5	STR.	16'-3"	17						
* A135	1	5	STR.	12'-11"	13	A234	1	5	STR.	14'-7"	15						
* A136	1	5	STR.	11'-3"	12	A235	1	5	STR.	12'-11"	13						
* A137	1	5	STR.	9'-6"	10	A236	1	5	STR.	11'-3"	12						
* A138	1	5	STR.	7'-10"	8	A237	1	5	STR.	9'-6"	10						

REINFORCING STEEL 30,189 LBS.  
\* EPOXY COATED REINFORCING STEEL 31,721 LBS.



**POUR SEQUENCE**

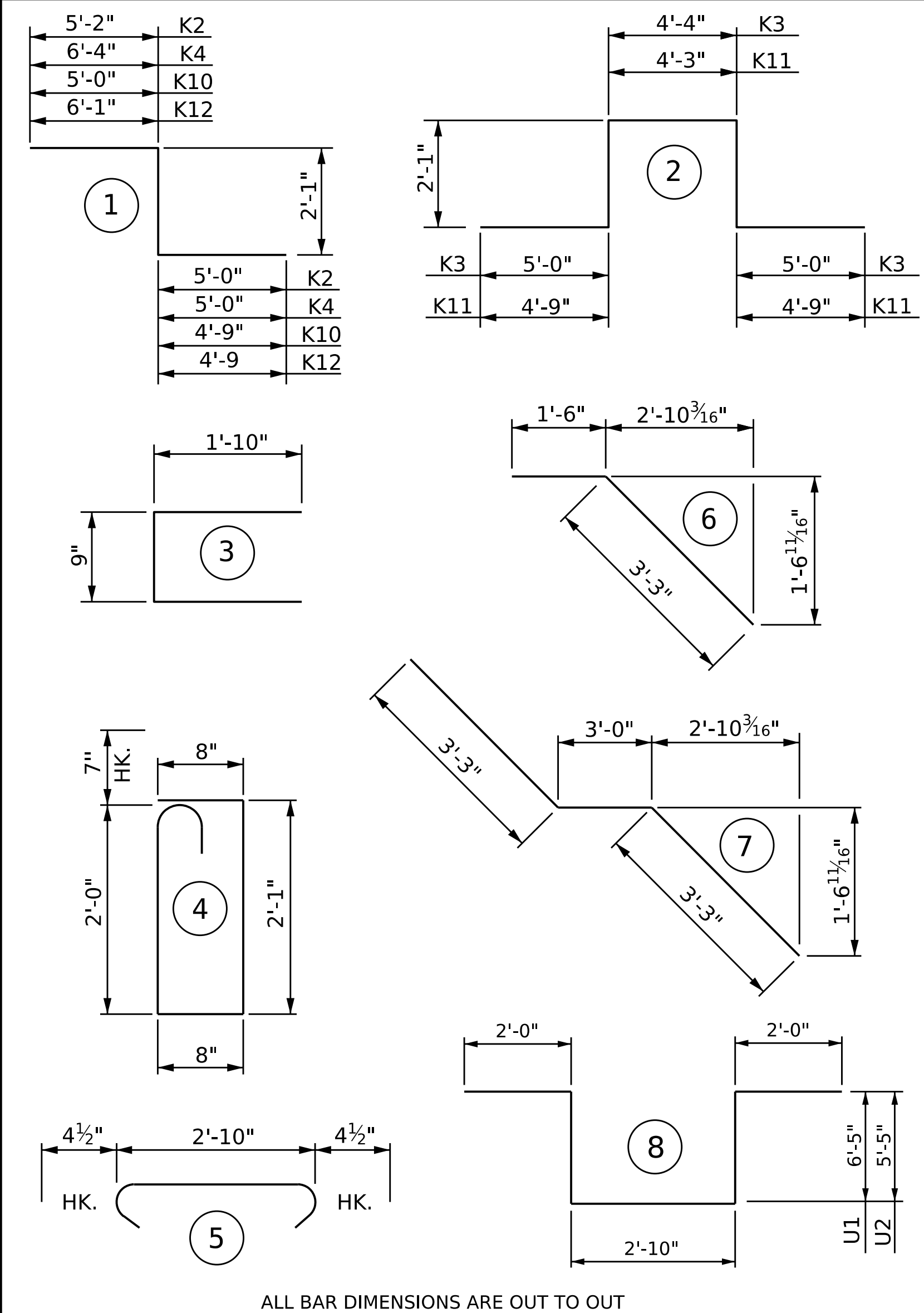
POUR NUMBER ①  
POUR ② CANNOT BE STARTED UNTIL POUR ① HAS REACHED A MINIMUM OF 3000 PSI  
POUR DIRECTION →



**OPTIONAL POUR SEQUENCE**

POUR NUMBER ①  
POUR ② CANNOT BE STARTED UNTIL POUR ① HAS REACHED A MINIMUM OF 3000 PSI  
POUR DIRECTION →

**BAR TYPES**



ALL BAR DIMENSIONS ARE OUT TO OUT

PROJECT NO. **B-5721**  
**ROCKINGHAM** COUNTY  
STATION: **21+64.00 -L-**



DocuSigned by:  
Francesca Lea  
879DA0B60584EF...

STATE OF NORTH CAROLINA  
DEPARTMENT OF TRANSPORTATION  
RALEIGH

**SUPERSTRUCTURE  
BILL OF MATERIAL**

REVISIONS						SHEET NO.
NO.	BY:	DATE:	NO.	BY:	DATE:	S-20
1			3			TOTAL SHEETS
2			4			31

STD. NO. BOM2