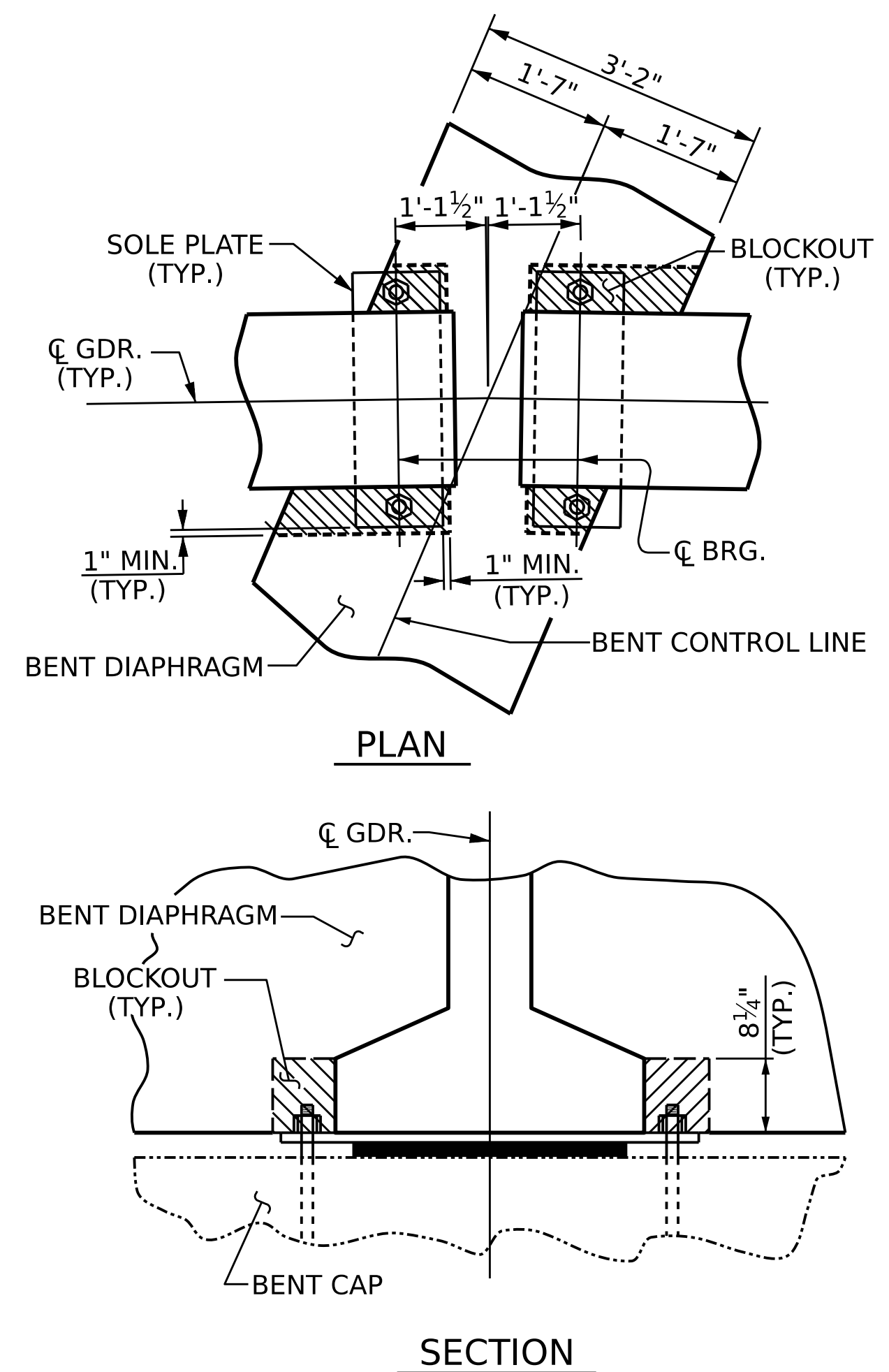
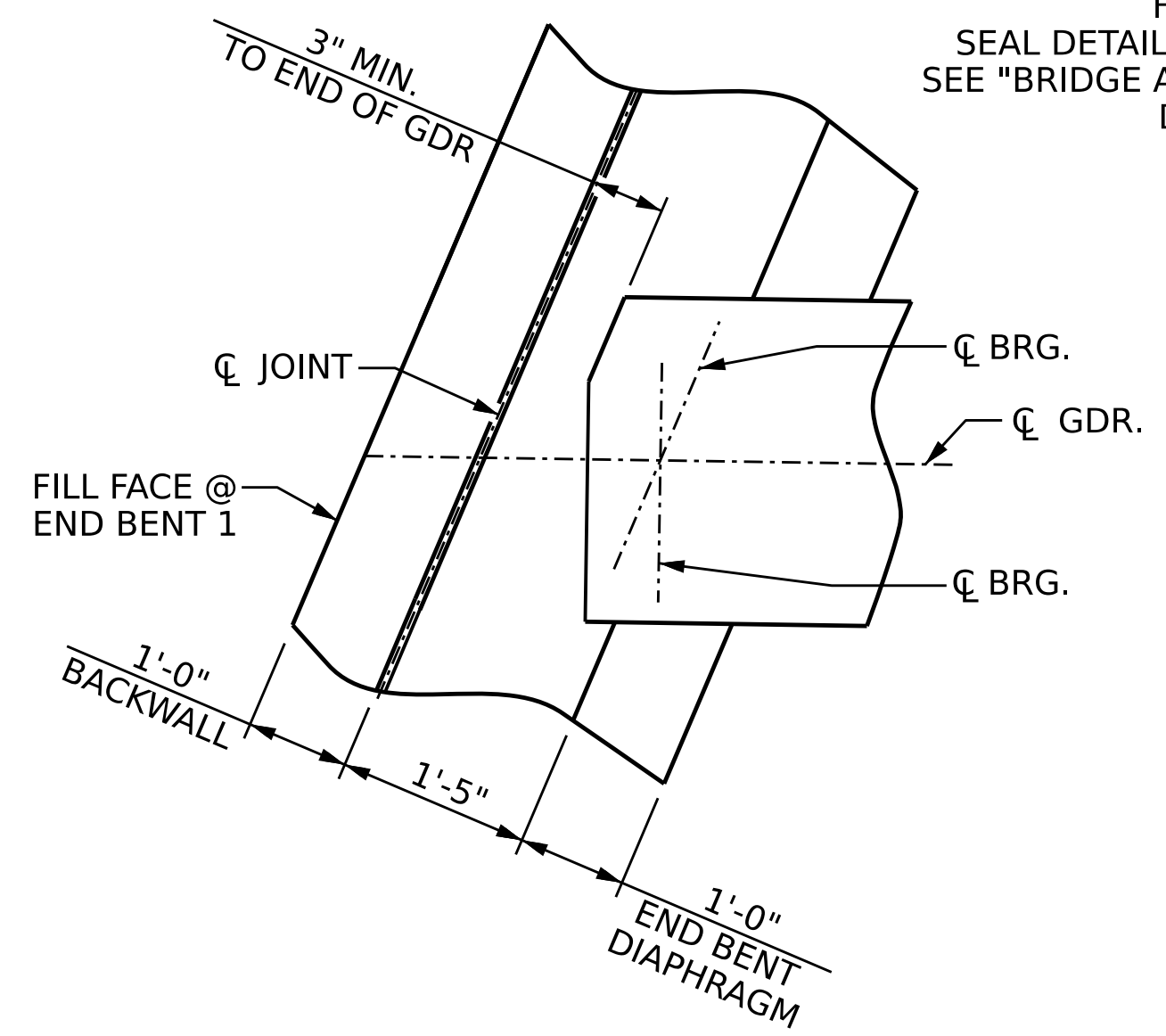


TYPICAL SECTION - BENT DIAPHRAGM

\* RADIAL DIMENSION  
 \*\* RADIAL THRU WORKPOINT

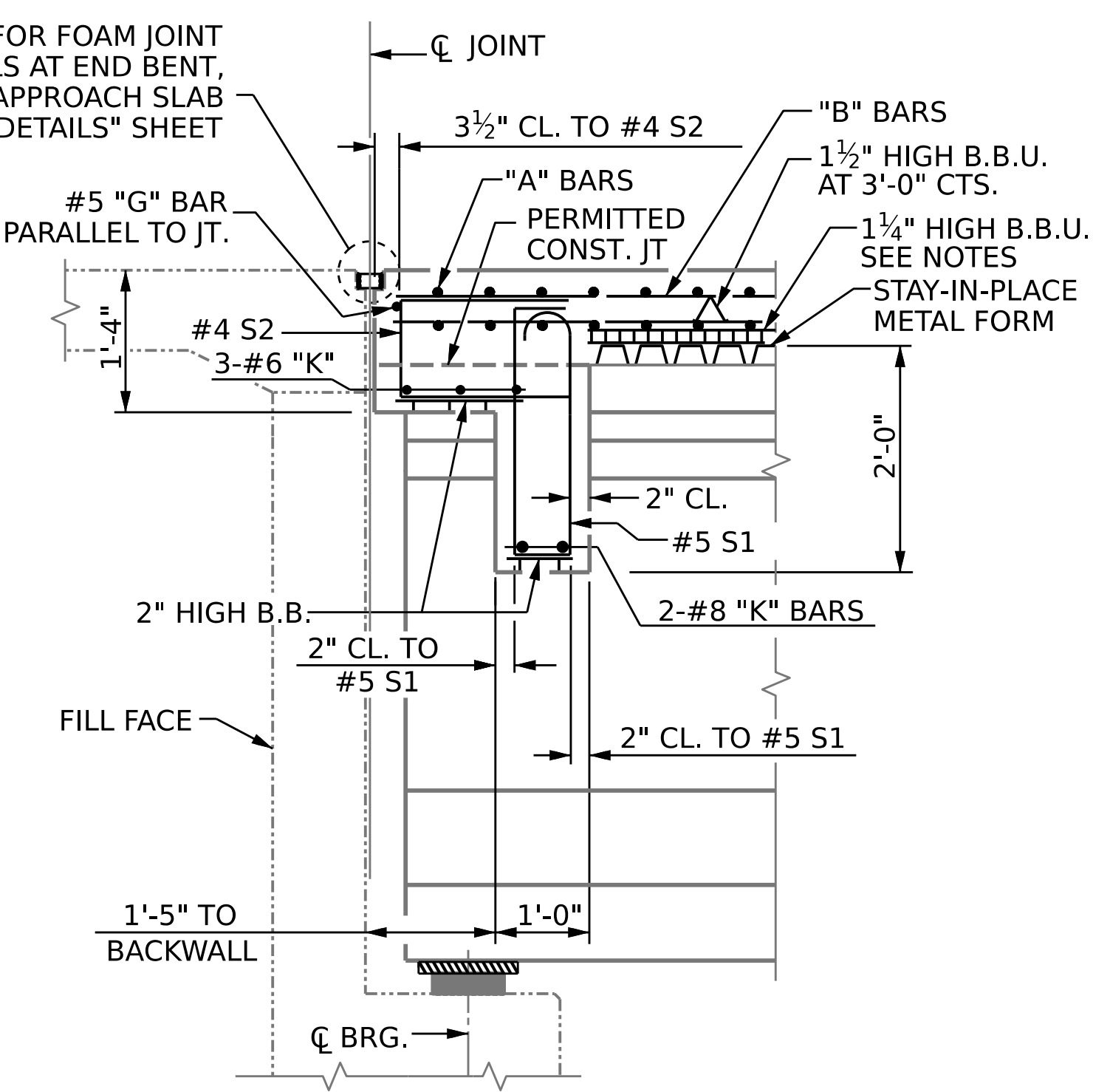


BENT DIAPHRAGM BLOCK-OUT DETAIL



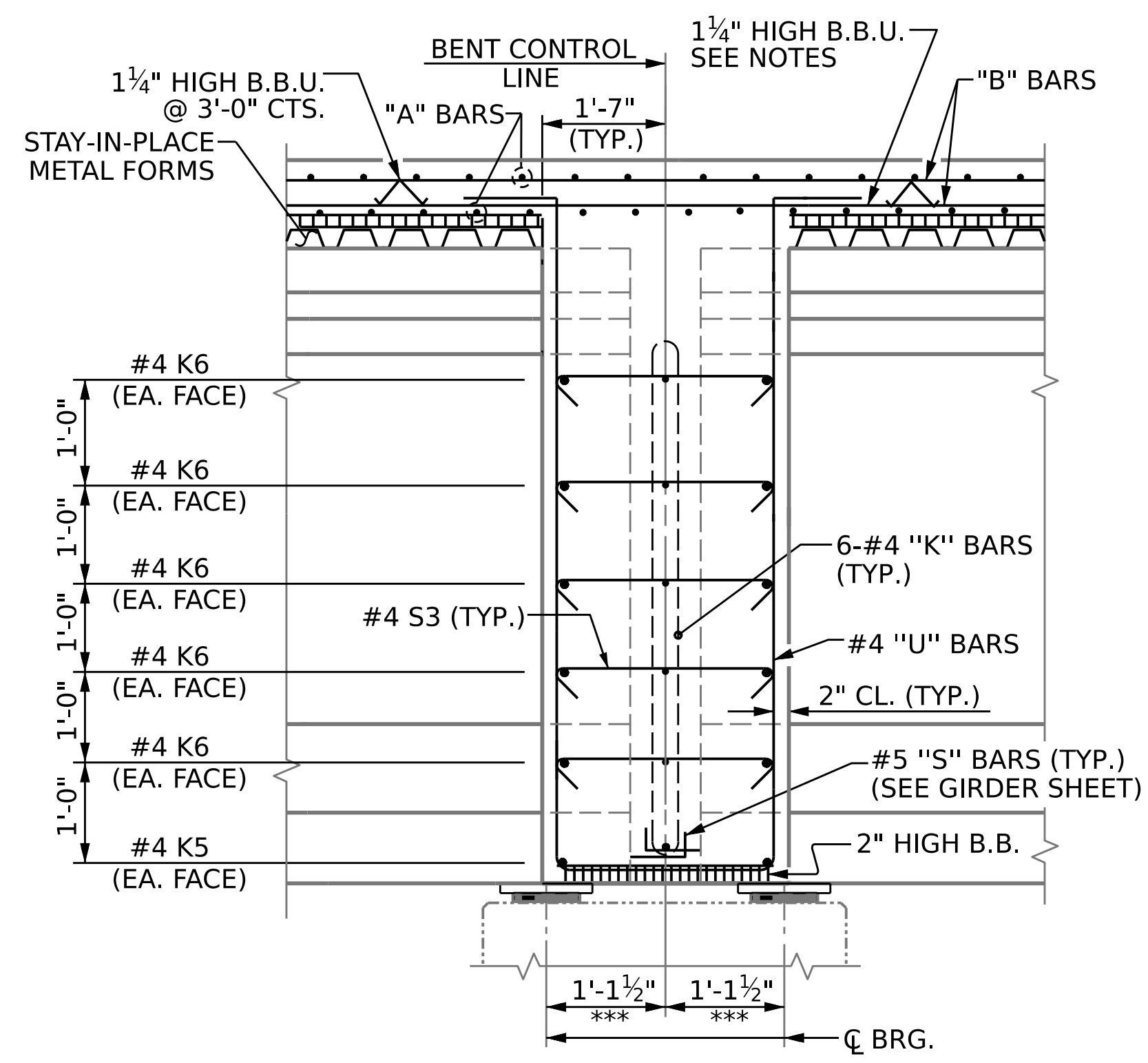
END BENT DIAPHRAGM

END BENT 1 SHOWN, END BENT 2 SIMILAR FOR TOP FLANGE CLIP DETAILS, SEE "PRESTRESSED CONCRETE GIRDER CONTINUOUS FOR LIVE LOAD DETAILS" SHEET



SECTION THRU END BENT DIAPHRAGM

#5 "G" BARS MAY BE SHIFTED SLIGHTLY, AS NECESSARY, TO CLEAR REINFORCING STEEL AND STIRRUPS.



SECTION THRU BENT DIAPHRAGM

\*\*\* MEASURED ALONG C GIRDER

PROJECT NO. B-5721  
ROCKINGHAM COUNTY  
 STATION: 21+64.00 -L-  
 SHEET 2 OF 2



STATE OF NORTH CAROLINA  
 DEPARTMENT OF TRANSPORTATION  
 RALEIGH  
 SUPERSTRUCTURE  
 TYPICAL SECTION

DRAWN BY: Q. T. NGUYEN DATE: 12/2022  
 CHECKED BY: F. LEA DATE: 12/2022  
 DESIGN ENGINEER OF RECORD: Z. MALIK DATE: 06/2022

DOCUMENT NOT CONSIDERED FINAL UNLESS ALL SIGNATURES COMPLETED

REVISIONS		SHEET NO.	
NO.	BY:	DATE:	NO.
1			3
2			4
			S-08
			TOTAL SHEETS 31