

**NOTES**

PROVIDE 1 1/4" HIGH BEAM BOLSTERS UPPER AT 4'-0" CTS. ATOP THE METAL STAY-IN-PLACE FORMS TO SUPPORT THE BOTTOM MAT OF "A" BARS. WHEN USING REMOVABLE FORMS, PROVIDE CONTINUOUS HIGH CHAIRS FOR METAL DECK (C.H.C.M.) @ 4'-0" CTS. WITH A HEIGHT TO SUPPORT THE BOTTOM MAT OF "A" BARS A CLEAR DISTANCE OF 2 1/2" ABOVE THE TOP OF THE REMOVABLE FORM.

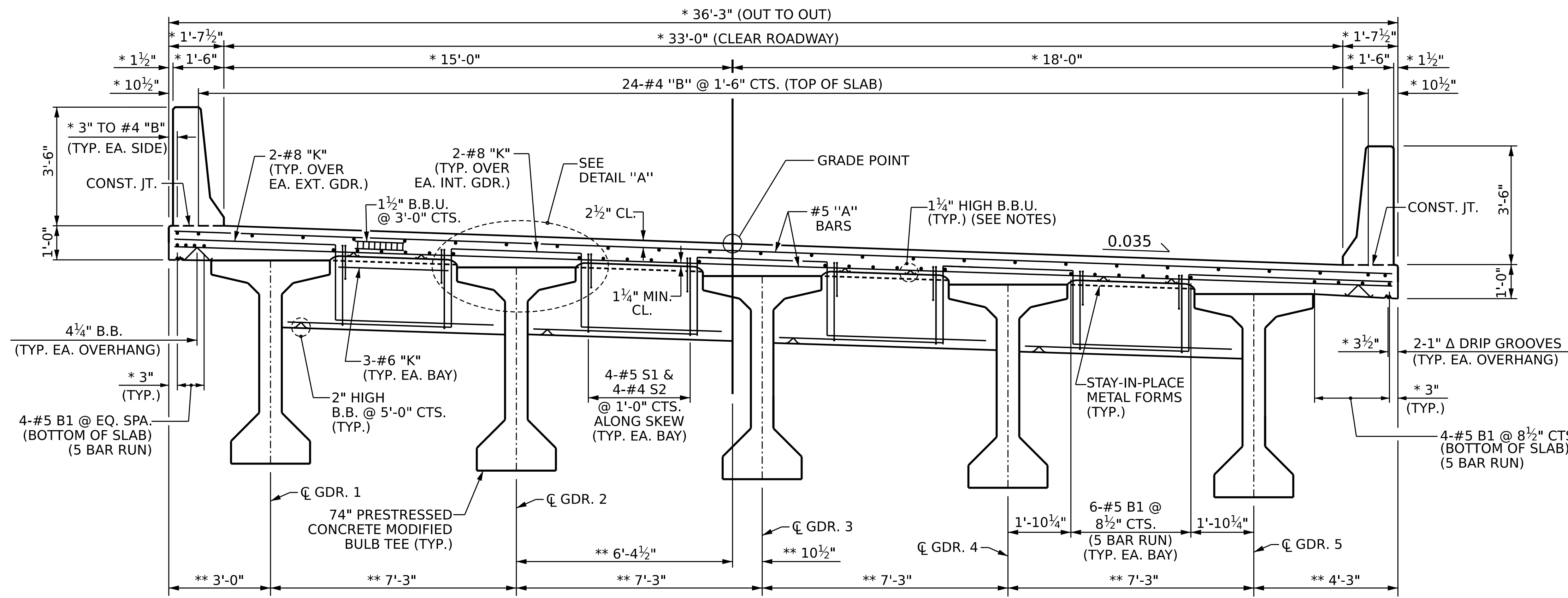
LONGITUDINAL STEEL MAY BE SHIFTED SLIGHTLY, AS NECESSARY, TO AVOID INTERFERENCE WITH STIRRUPS IN PRESTRESSED CONCRETE GIRDERS.

BARRIER RAIL IN EACH CONTINUOUS UNIT SPAN SHALL NOT BE CAST UNTIL ALL SLAB CONCRETE IN THAT SPAN HAS BEEN CAST AND HAS REACHED A MINIMUM COMPRESSIVE STRENGTH OF 3,000 PSI.

#5 "G" BAR MAY BE SHIFTED SLIGHTLY, AS NECESSARY, TO CLEAR REINFORCING STEEL AND STIRRUPS.

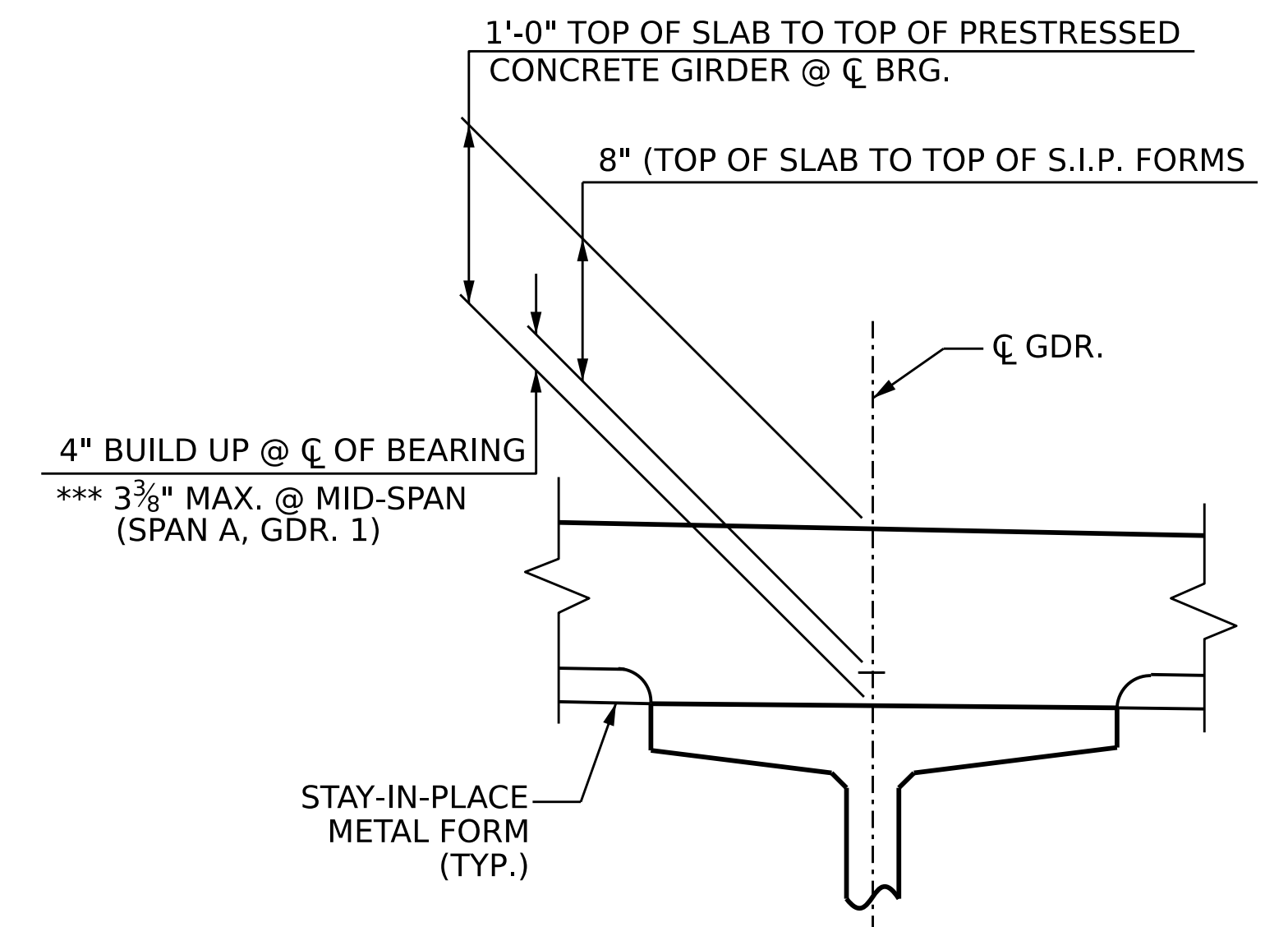
THE NOMINAL UNCOMPRESSED SEAL WIDTH OF THE FOAM JOINT SEAL SHALL BE 2" AT END BENT 1 AND END BENT 2.

FOR FOAM JOINT SEALS, SEE SPECIAL PROVISIONS.



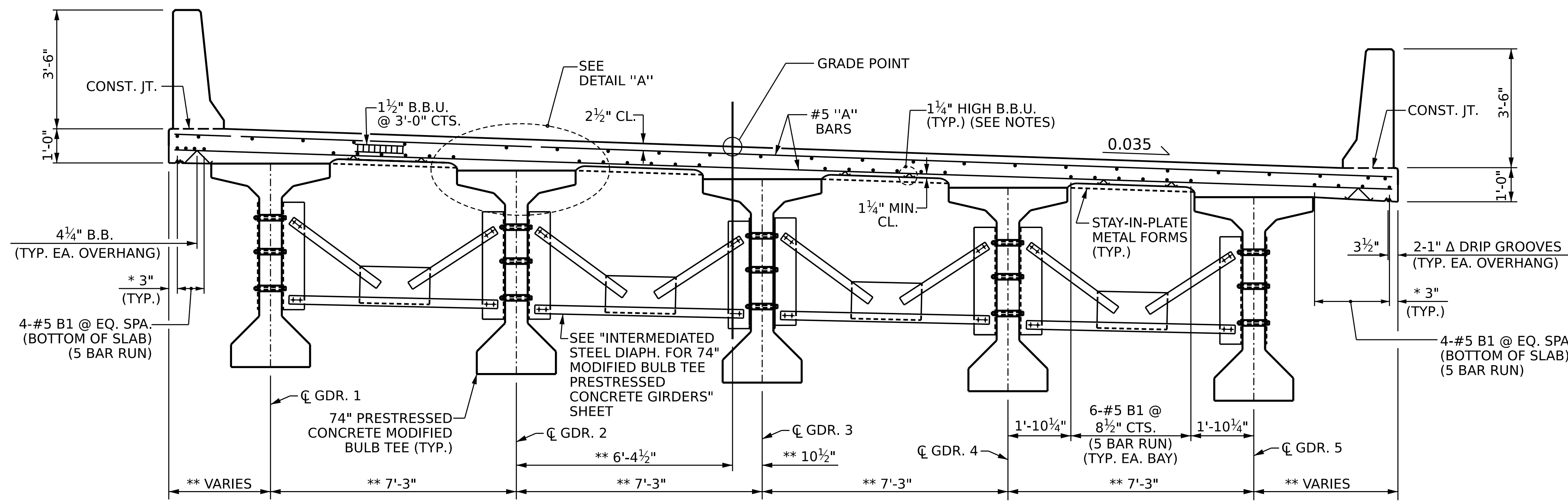
**TYPICAL SECTION - END BENT DIAPHRAM**

\* RADIAL DIMENSION  
\*\* RADIAL THRU WORKPOINT



**DETAIL "A"**

\*\*\* BASED ON PREDICTED FINAL CAMBER AND THEORETICAL GRADE LINE ELEVATIONS.



**TYPICAL SECTION - INTERMEDIATE DIAPHRAM**

PROJECT NO. B-5721  
ROCKINGHAM COUNTY  
 STATION: 21+64.00 -L-

SHEET 1 OF 2



STATE OF NORTH CAROLINA  
 DEPARTMENT OF TRANSPORTATION  
 RALEIGH  
**SUPERSTRUCTURE**  
**TYPICAL SECTION**

DRAWN BY : Q. T. NGUYEN DATE : 12/2022  
 CHECKED BY : F. LEA DATE : 12/2022  
 DESIGN ENGINEER OF RECORD : Z. MALIK DATE : 05/2022

REVISIONS		SHEET NO.	
NO.	BY:	DATE:	NO.
1			3
2			4

DOCUMENT NOT CONSIDERED FINAL UNLESS ALL SIGNATURES COMPLETED