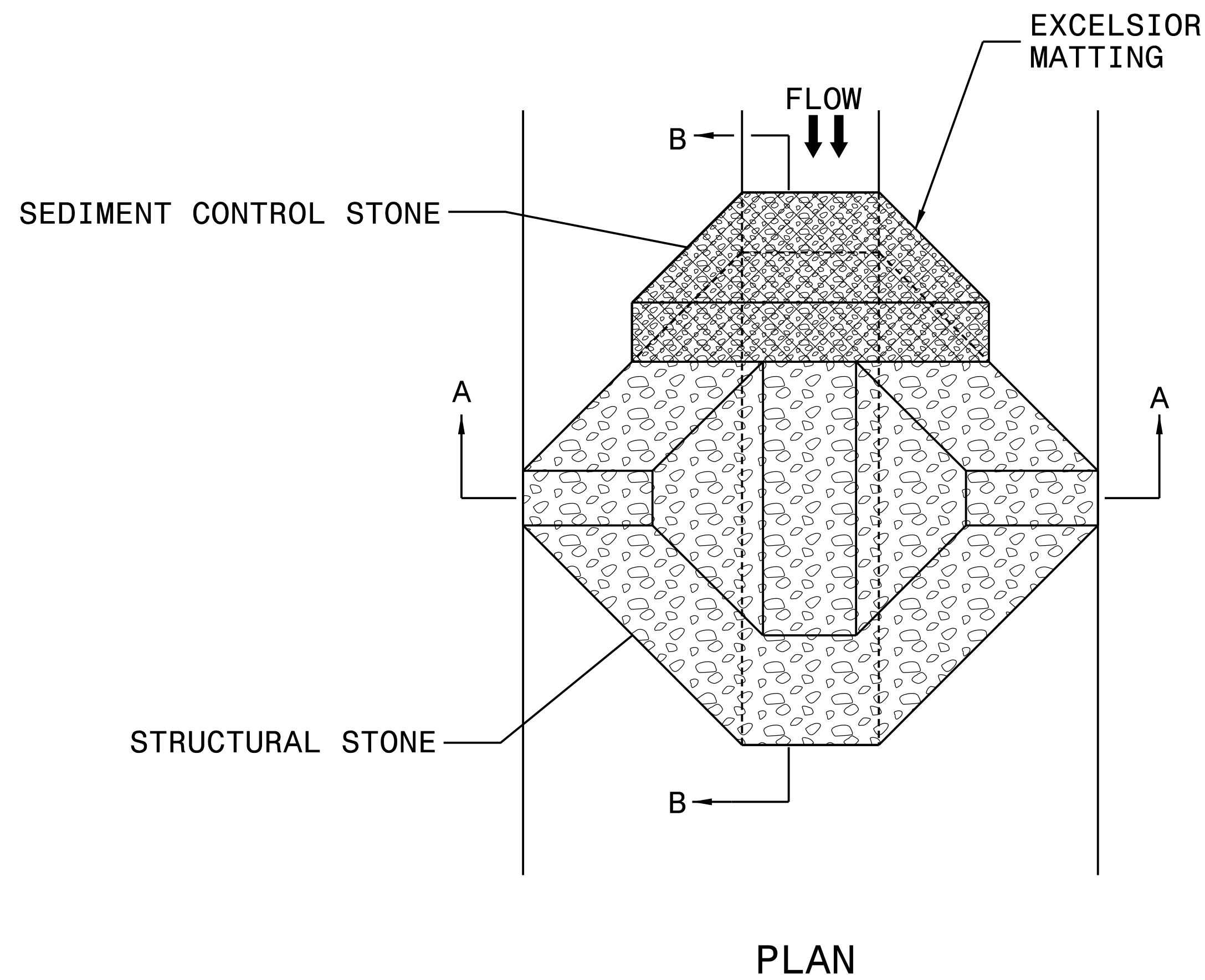


# TEMPORARY ROCK SILT CHECK TYPE 'A' WITH EXCELSIOR MATTING AND POLYACRYLAMIDE (PAM)



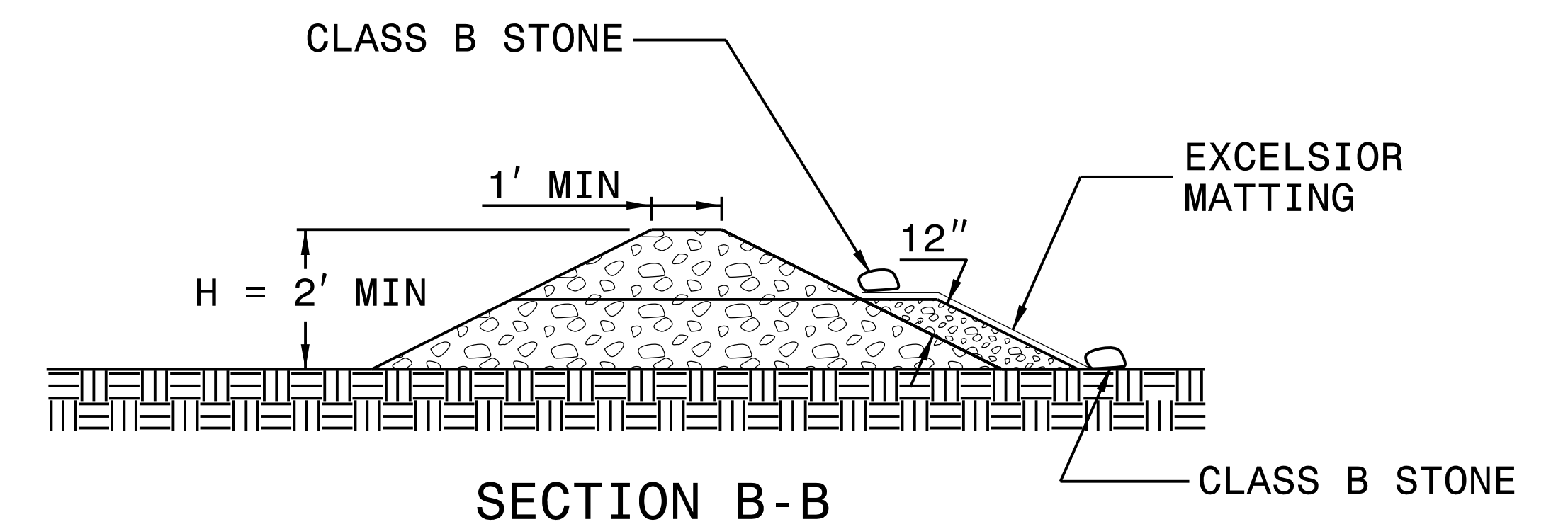
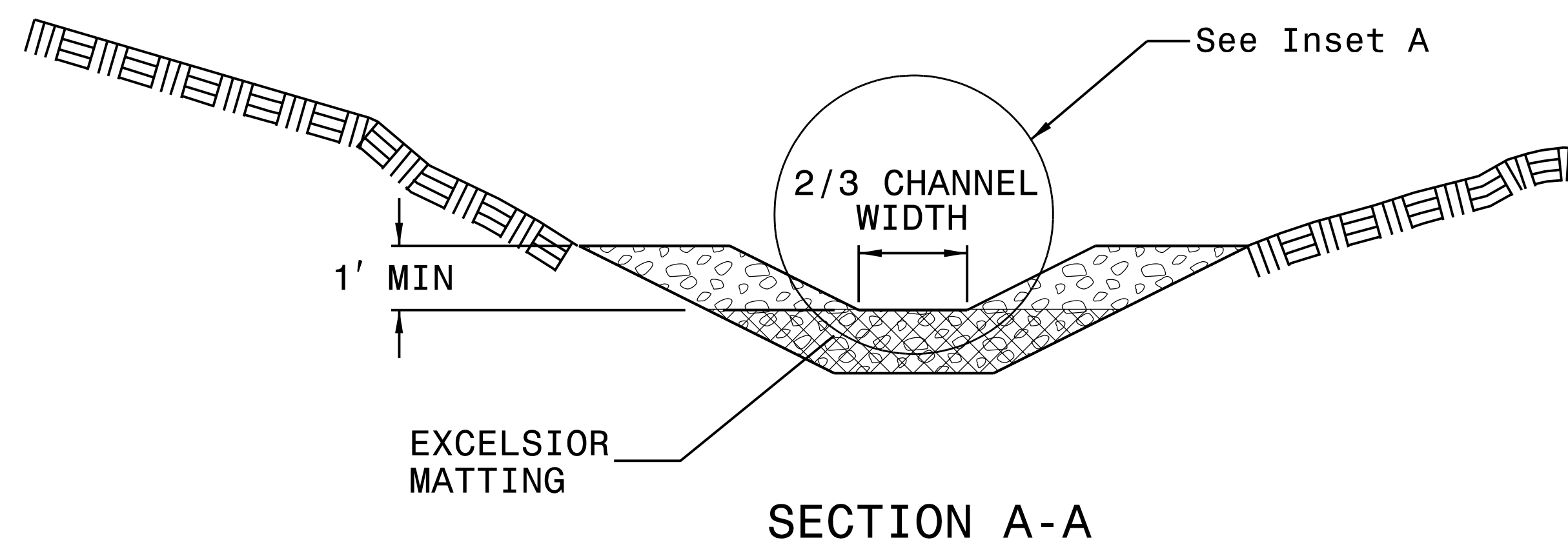
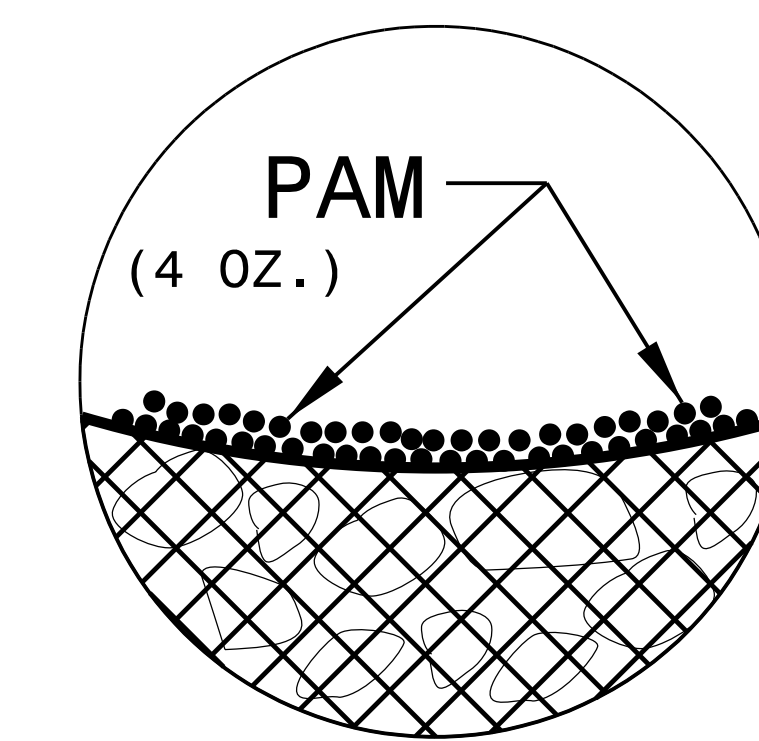
## NOTES:

INSTALL TEMPORARY ROCK SILT CHECK TYPE A IN ACCORDANCE WITH ROADWAY STANDARD DRAWING NO. 1633.01.

USE EXCELSIOR FOR MATTING MATERIAL AND ANCHOR MATTING SECTION AT TOP AND BOTTOM WITH CLASS B STONE.

PRIOR TO POLYACRYLAMIDE (PAM) APPLICATION, OBTAIN A SOIL SAMPLE FROM PROJECT LOCATION, AND FROM OFFSITE MATERIAL, AND ANALYZE FOR APPROPRIATE PAM FLOCCULANT TO BE APPLIED TO EACH ROCK SILT CHECK.

INITIALLY APPLY 4 OUNCES OF POLYACRYLAMIDE (PAM) TO TOP OF MATTING SECTION AND AFTER EVERY RAINFALL EVENT THAT EQUALS OR EXCEEDS 0.50 INCHES.



NOT TO SCALE

5/14/99  
7:50:00 PM  
B:\5000\9000-CAD-GIS\910-CAD\70-NCDDOT-TIP\Erosion Control\Design\230-B5721\EC-02A\_TRAC\_A\_with\_PAM\_Detail.dgn  
CDDOT SWU B:\5000\9000-CAD-GIS\910-CAD\70-NCDDOT-TIP\Erosion Control\Design\230-B5721\EC-02A\_TRAC\_A\_with\_PAM\_Detail.dgn