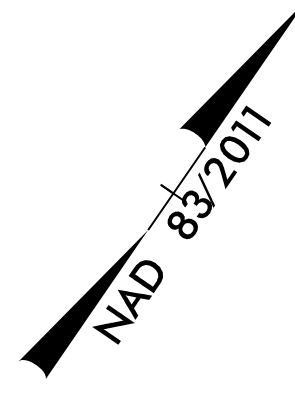
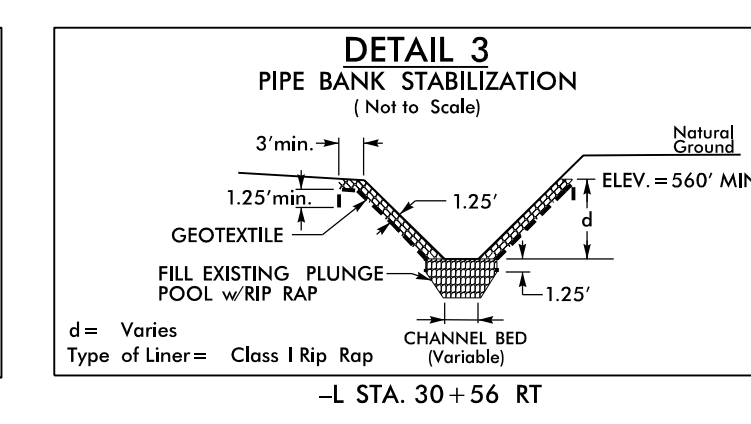
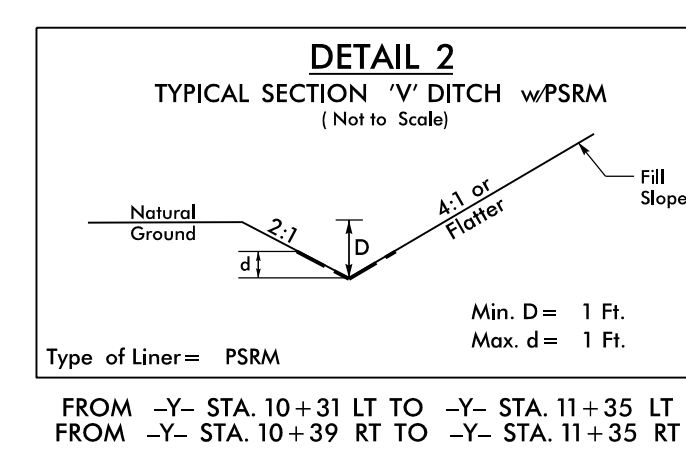
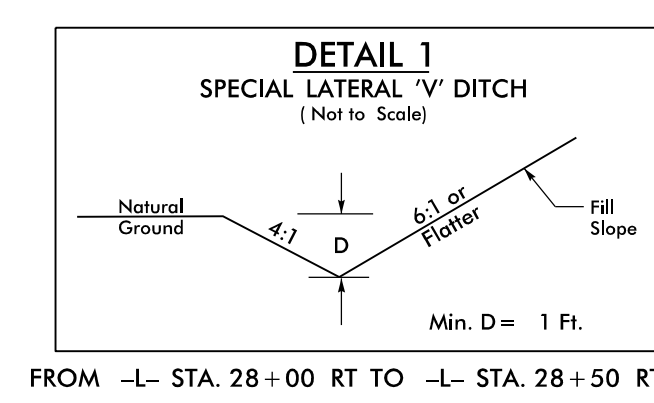


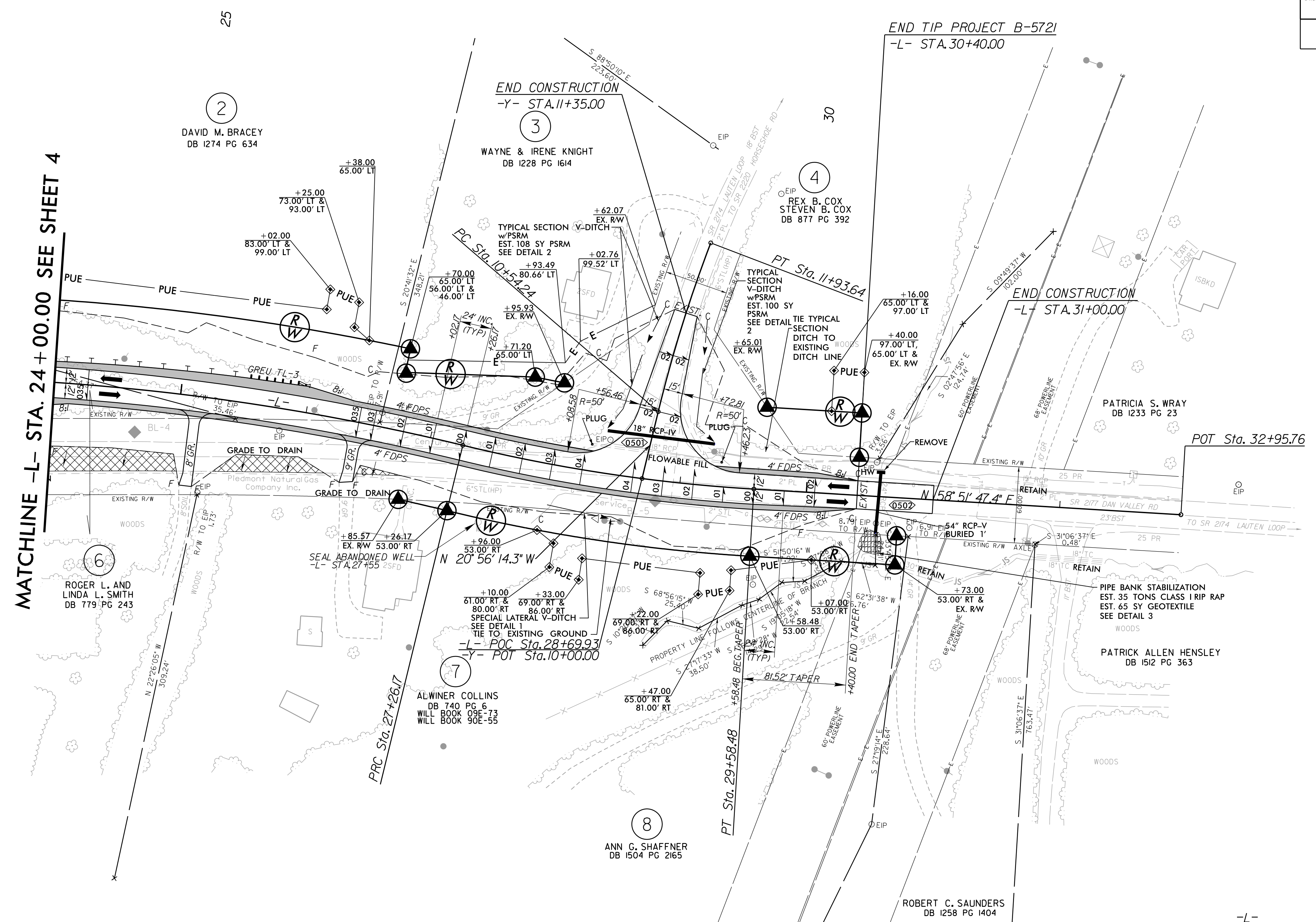
5/14/99

REVISIONS

2/14/2023
Muebazab



PROJECT REFERENCE NO. B-5721	SHEET NO. 5
RW SHEET NO.	
ROADWAY DESIGN ENGINEER	HYDRAULICS ENGINEER
Prepared in the Office of: AECOM	
<small>NC FIRM LICENSE No. F-0342 5438 Wade Park Boulevard, Suite 200 Raleigh, NC 27607 1991 461-000</small>	
DOCUMENT NOT CONSIDERED FINAL UNLESS ALL SIGNATURES COMPLETED	



-L-	-Y-	-Y-
PI Sta 20+39.80	PI Sta 28+42.64	PI Sta 11+24.03
$\Delta = 43^{\circ} 38' 06.8''$ (RT)	$\Delta = 10^{\circ} 14' 19.6''$ (LT)	$\Delta = 7^{\circ} 17' 14.9''$ (RT)
D = 3' 00" 56.0"	D = 4' 24" 26.5"	D = 5' 13" 40.9"
L = 1,447.00'	L = 232.31'	L = 139.39'
T = 760.62'	T = 116.47'	T = 69.79'
R = 1,900.00'	R = 1,300.00'	R = 1,095.93'
e = 0.035 FT/FT	e = 0.04 FT/FT	e = RC
R.O. = 84.00'	R.O. = 96.00'	R.O. = See Plans

PAVEMENT REMOVAL

FOR -L- PROFILE SEE SHEET 6
FOR -Y- PROFILE SEE SHEET 6
FOR BRIDGE SEE SHEETS S-01 TO S-31