

**NOTES:**

STRUCTURAL STEEL SHALL BE AASHTO GRADE 36 OR GREATER.  
ANCHOR BOLTS, NUTS, AND WASHERS SHALL BE GALVANIZED IN ACCORDANCE WITH THE STANDARD SPECIFICATIONS.

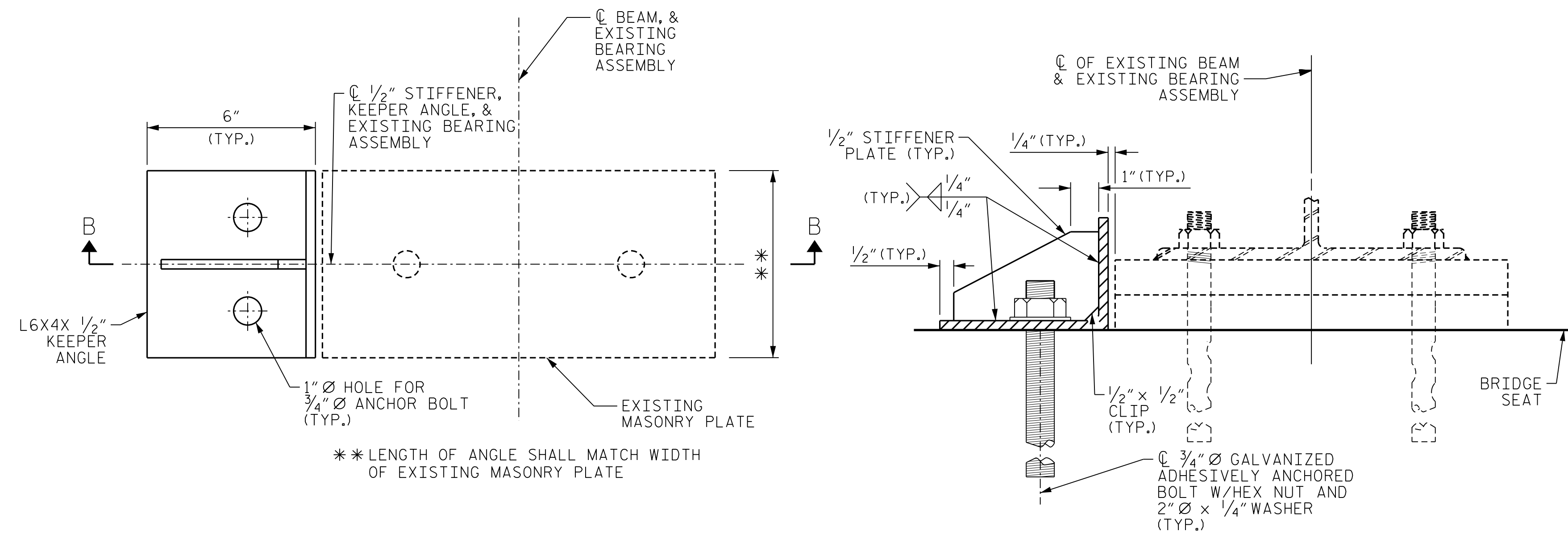
ANCHOR BOLTS SHALL MEET THE REQUIREMENTS OF ASTM A449. NUTS SHALL MEET THE REQUIREMENTS OF AASHTO M291-DH OR AASHTO M292-2H. WASHERS SHALL MEET THE REQUIREMENTS OF AASHTO M293. SHOP DRAWINGS ARE NOT REQUIRED FOR ANCHOR BOLTS, NUTS AND WASHERS. SHOP INSPECTION IS REQUIRED.

ADHESIVELY ANCHORED ANCHOR BOLTS SHALL HAVE MINIMUM EMBEDMENT OF 12" WITH SUFFICIENT PROJECTION TO PROVIDE FULL NUT ENGAGEMENT ABOVE KEEPER ASSEMBLY. SEE STANDARD SPECIFICATIONS FOR ADHESIVE ANCHOR REQUIREMENTS. NO FIELD TESTING REQUIRED.

AFTER INSTALLATION, ASSEMBLIES ARE TO BE CLEANED AND PAINTED ACCORDING TO THE SPECIAL PROVISION "CLEANING AND PAINTING EXISTING BEARINGS WITH HRCSA".

THE CONTRACTOR SHALL FIELD VERIFY THE LOCATION OF PROPOSED ANCHOR BOLTS AND EXISTING CAP REINFORCING STEEL TO ENSURE NO CONFLICTS.

THE CONTRACTOR SHALL SUBMIT WORKING DRAWINGS SHOWING LOCATIONS OF ANCHOR BOLTS AND EXISTING CAP REINFORCEMENT TO THE ENGINEER FOR APPROVAL PRIOR TO FABRICATION OF ASSEMBLIES.



PLAN

SECTION B-B

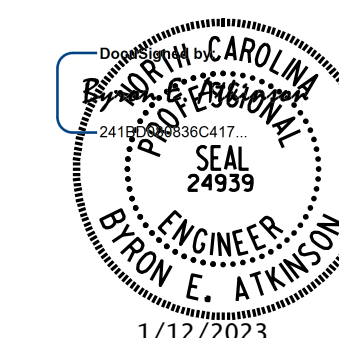
(LOCATION OF EXISTING ANCHOR BOLTS AS SHOWN IS FOR ILLUSTRATION ONLY)

STEEL BEARING ANGLE KEEPER OPTION

ANTICIPATED STEEL KEEPER ANGLE ASSEMBLY LOCATIONS				
BRIDGE NO.	SPAN	BEAM	LOCATION	NO. OF ASSEMBLIES
590281	C	4	BENT 2	1
590282	A	1	BENT 1	2
590337	A	2	BENT 1	1
590337	A	3	BENT 1	1
590337	C	3	BENT 2	1
590337	C	4	BENT 2	1
590337	C	5	BENT 2	1
590337	C	6	BENT 2	1
590338	C	4	BENT 2	1
590342	D	1	BENT 3	1
590345	C	5	BENT 3	1
590345	C	7	BENT 3	1
590345	E	4	BENT 4	2

FOR PLACEMENT OF ASSEMBLIES ON LEFT OR RIGHT SIDE OF BEAM, SEE "BEAM REPAIR LOCATIONS" SHEET.

I-6052 &  
PROJECT NO. 15BPR.35  
MECKLENBURG COUNTY  
BRIDGE NO. 590281, 590282  
590337, 590338  
590342, 590345



STATE OF NORTH CAROLINA  
DEPARTMENT OF TRANSPORTATION  
RALEIGH

**STEEL BEARING KEEPER ANGLE ASSEMBLY DETAILS**

**DOCUMENT NOT CONSIDERED FINAL UNLESS ALL SIGNATURES COMPLETED**

MI ENGINEERING  
1011 SCHAUB DRIVE, SUITE 100  
RALEIGH, NC 27606  
(919) 851-6606  
FIRM PE NUMBER : P-0671

REVISIONS						SHEET NO.
NO.	BY:	DATE:	NO.	BY:	DATE:	SD-4
1			3			TOTAL SHEETS 108
2			4			

DRAWN BY : B.E. LANNING DATE : 10/2022  
CHECKED BY : B.E. ATKINSON DATE : 10/2022  
DESIGN ENGINEER OF RECORD : B.E. ATKINSON DATE : 10/2022

1/12/2023 9:20:20 AM User: blanning  
 Filename: N:\NC Bridges\W21001.39-I-6052.101\Meck. Co. Br. Preservation\Structures\410.007-I-6052.SMU.SD-4.dgn