

NO DEFECTS NOTED DURING INSPECTION BY THE INSPECTION TEAM. THE CONTRACTOR SHALL REINSPECT AND REPORT TO THE ENGINEER ANY UNNOTICED DEFECTS.

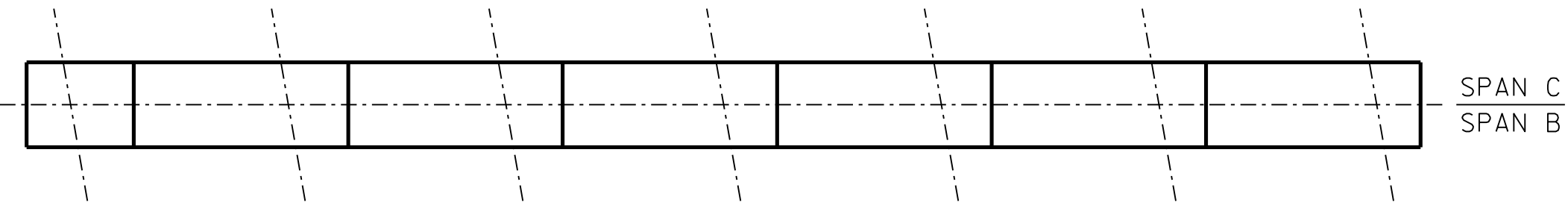
**NOTES**

REPAIR LOCATIONS AND ESTIMATE OF QUANTITIES ARE GIVEN WITH THE BEST INFORMATION AVAILABLE. IF ADDITIONAL REPAIRS NOT SHOWN ON THE DRAWINGS ARE DEEMED NECESSARY BY THE INSPECTOR OR ENGINEER THE CONTRACTOR SHALL NOTE ON THE DRAWINGS THE APPROXIMATE LOCATION AND DESCRIPTION OF THE REPAIRS AND ADJUST THE ACTUAL QUANTITIES ENTERED INTO THE REPAIR QUANTITY TABLE.

**AS-BUILT REPAIR QUANTITY TABLE**

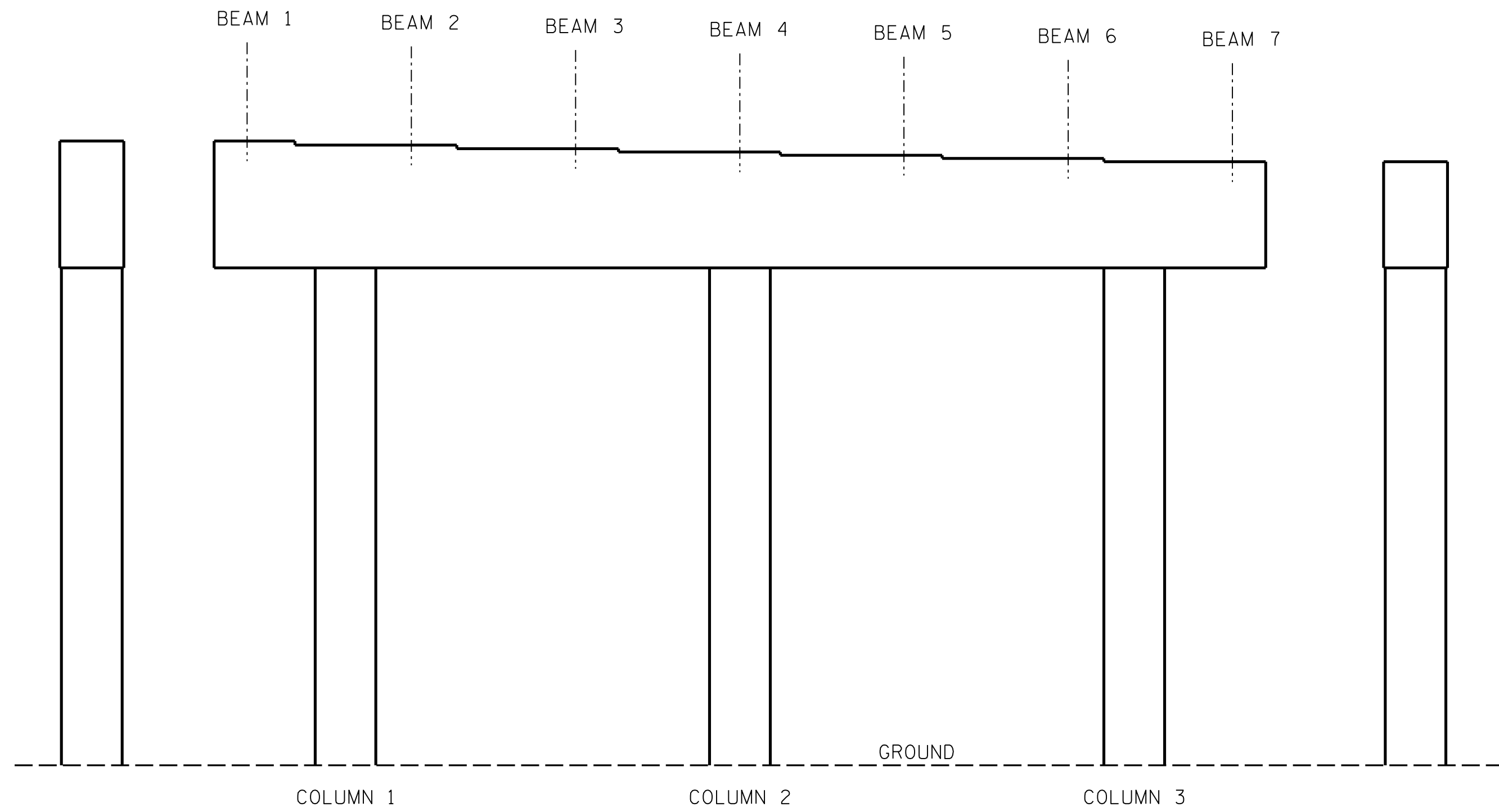
BENT 2	QUANTITIES			
	ESTIMATE		ACTUAL	
SHOTCRETE REPAIRS	AREA SF	VOLUME CF	AREA SF	VOLUME CF
CAP (VERTICAL FACE)	0.0	0.0		
CAP (HORIZONTAL FACE)	0.0	0.0		
COLUMN	0.0	0.0		
CONCRETE REPAIRS	AREA SF	VOLUME CF	AREA SF	VOLUME CF
CAP	0.0	0.0		
EPOXY RESIN INJECTION	LIN. FT.		LIN. FT.	
CAP	0.0			
COLUMN	0.0			
EPOXY COATING	AREA SF		AREA SF	
TOP OF CAP	0.0			

VALUES IN CHART REPRESENT ESTIMATED REPAIR TOTALS AFTER REMOVAL OF UNSOUND CONCRETE. MIN. OF 1" BEHIND REBAR AND MIN. 2" CL. TO SAWCUT. SEE REPAIR DETAILS.



**PLAN**

TOP OF CAP



**END VIEW**

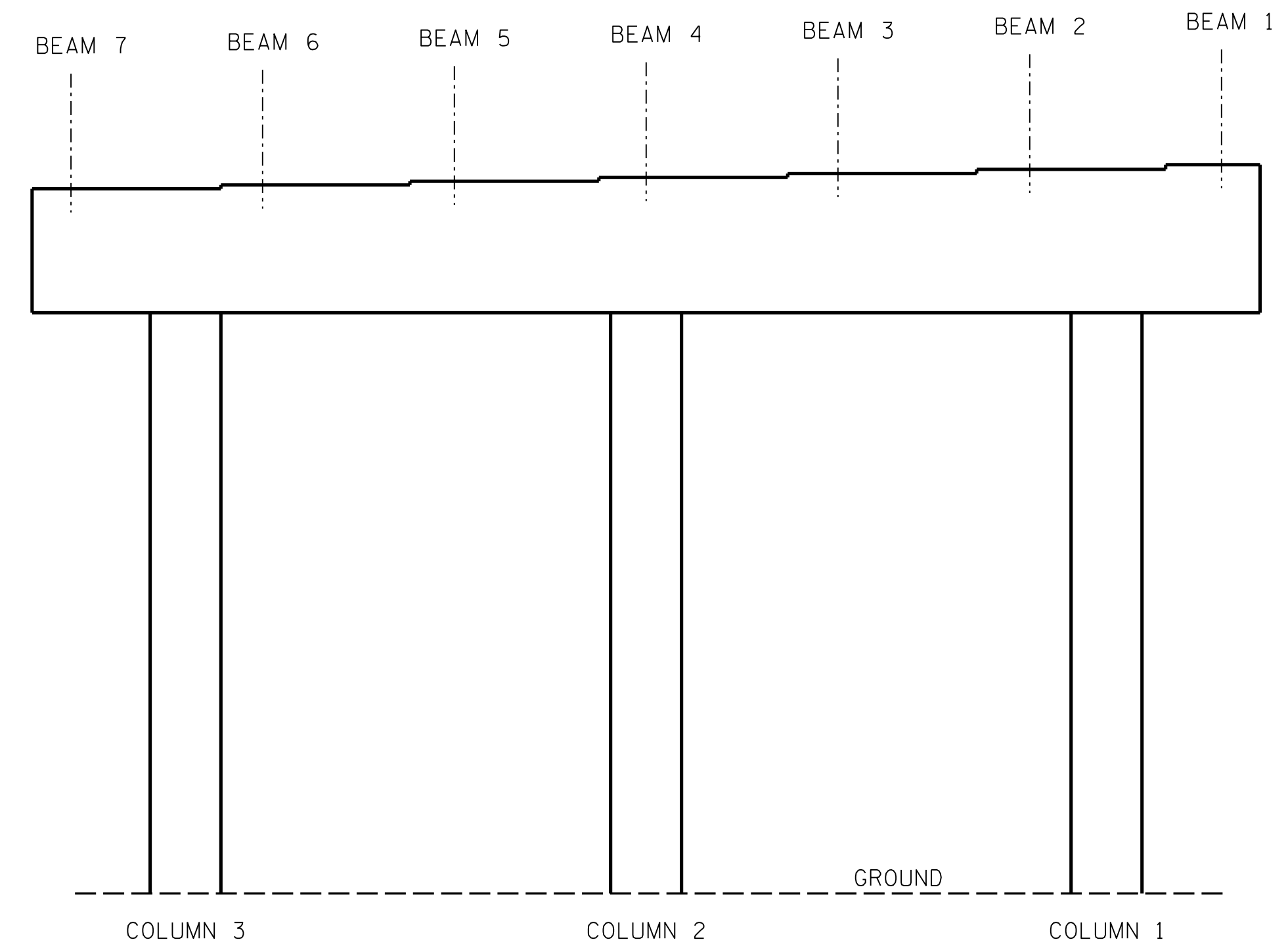
EAST SIDE

**ELEVATION**

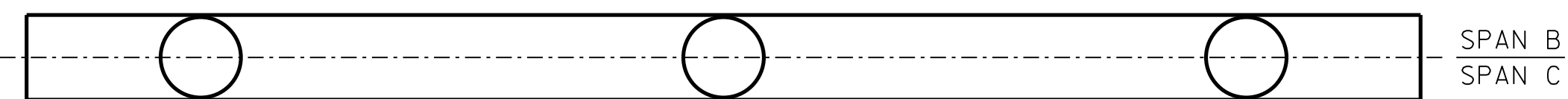
SPAN B

**END VIEW**

WEST SIDE



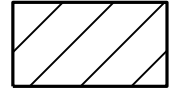


**ELEVATION**

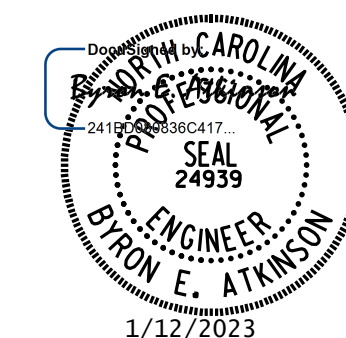


**PLAN**

BOTTOM OF CAP (LOOKING UP)

**KEY**

-  SHOTCRETE REPAIR
-  ERI EPOXY RESIN INJECTION
-  CONCRETE REPAIR



**DOCUMENT NOT CONSIDERED FINAL UNLESS ALL SIGNATURES COMPLETED**

MI ENGINEERING  
1011 SCHAUB DRIVE, SUITE 100  
RALEIGH, NC 27606  
(919) 851-6606  
FIRM PE NUMBER: P-0671

PROJECT NO. 15BPR.35  
MECKLENBURG COUNTY  
BRIDGE NO. 590345

STATE OF NORTH CAROLINA  
DEPARTMENT OF TRANSPORTATION  
RALEIGH  
SUBSTRUCTURE  
BENT 2

REVISIONS						SHEET NO.
NO.	BY:	DATE:	NO.	BY:	DATE:	
1			3			S9-10 TOTAL SHEETS 108
2			4			

DRAWN BY : B.E. LANNING DATE : 10/2022  
CHECKED BY : B.E. ATKINSON DATE : 10/2022  
DESIGN ENGINEER OF RECORD : B.E. ATKINSON DATE : 10/2022

1/12/2023 9:20:10 AM User: blanning Filename: N:\NC Bridges\21001.39-I-6052-101\Meck. Co. Br. Preservation\Structures\409\_019\_15BPR35\_SMU\_BT2\_590345.dgn