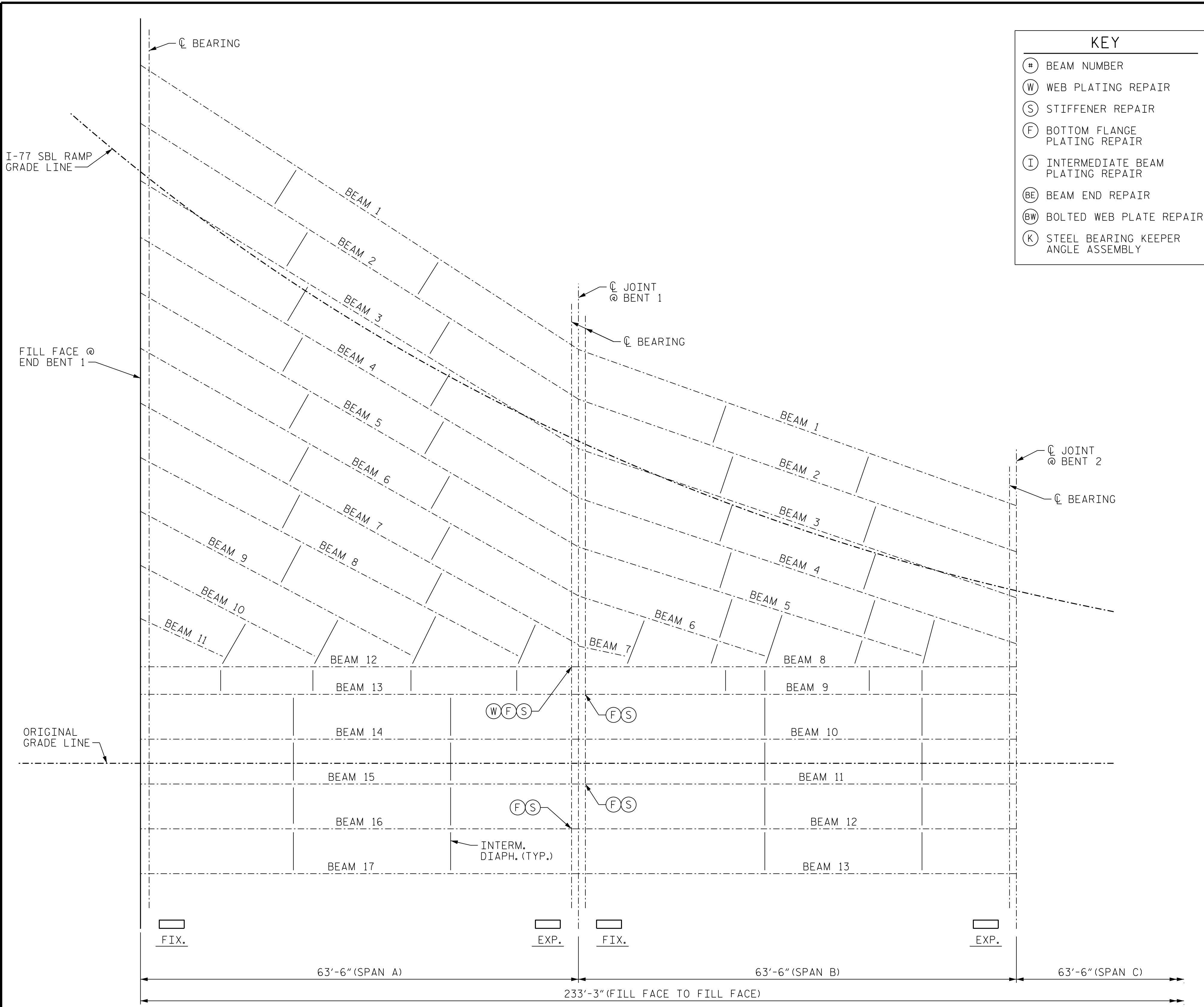


1/12/2023  
9:19:39 AM  
User: blanning  
Filename: N:\NC Bridges\W21001.39-I-6052.101\Meck Co.Br.Preservation\Structures\408.013-I-6052.SMU.FPI.590342.dgn



| KEY |                                     |
|-----|-------------------------------------|
| #   | BEAM NUMBER                         |
| W   | WEB PLATING REPAIR                  |
| S   | STIFFENER REPAIR                    |
| F   | BOTTOM FLANGE PLATING REPAIR        |
| I   | INTERMEDIATE BEAM PLATING REPAIR    |
| BE  | BEAM END REPAIR                     |
| BW  | BOLTED WEB PLATE REPAIR             |
| K   | STEEL BEARING KEEPER ANGLE ASSEMBLY |

**NOTES:**

REPAIR LOCATIONS AND ESTIMATE OF QUANTITIES ARE GIVEN WITH THE BEST INFORMATION AVAILABLE. IF ADDITIONAL REPAIRS NOT SHOWN ON THE DRAWINGS ARE DEEMED NECESSARY BY THE ENGINEER AFTER THE STRUCTURAL STEEL HAS BEEN CLEANED, BLASTED, AND PRIMED, THE CONTRACTOR AND ENGINEER SHALL REVIEW THE STEEL TO VERIFY NOTED REPAIR LOCATIONS AND TO IDENTIFY ANY ADDITIONAL REPAIR LOCATIONS. THE ENGINEER SHALL NOTE ON THE DRAWINGS THE APPROXIMATE LOCATION AND DESCRIPTION OF THE REPAIRS AND ADJUST THE ACTUAL QUANTITIES ENTERED INTO THE REPAIR QUANTITY TABLE.

FOR REPAIR DETAILS, SEE "BEAM REPAIR DETAILS" AND "STEEL KEEPER ANGLE ASSEMBLY DETAILS" SHEETS.

THE LOCATIONS AND DIMENSIONS OF THE AREAS FOR STEEL BEAM REPAIR ARE BASED ON THE BEST INFORMATION AVAILABLE. THE CONTRACTOR, IN CONJUNCTION WITH THE ENGINEER, SHALL VERIFY THE LOCATION AND EXTENTS OF REPAIR AREAS PRIOR TO STEEL FABRICATION.

FOR CLEANING AND PAINTING EXISTING BEARINGS WITH HRCSA, SEE SPECIAL PROVISIONS.

STRUCTURAL STEEL REPAIRS SHALL BE COMPLETED BEFORE FINAL CLEANING AND PAINTING OF STRUCTURAL STEEL.

FOR BEAM REPAIR PLATING, SEE SPECIAL PROVISIONS.

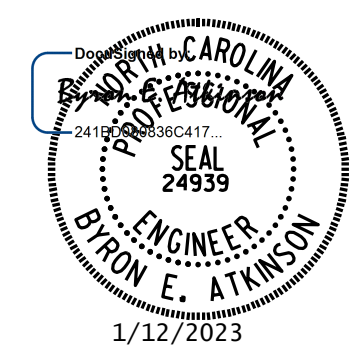
FOR BEAM REPAIR CUT-OUT, SEE SPECIAL PROVISIONS.

FOR BOLTED BEAM REPAIR, SEE SPECIAL PROVISIONS.

| ANTICIPATED BEAM REPAIR LOCATIONS |      |          |             |          |          |          |          |          |
|-----------------------------------|------|----------|-------------|----------|----------|----------|----------|----------|
| SPAN                              | BEAM | LOCATION | DETAIL TYPE | DIM. "A" | DIM. "B" | DIM. "C" | DIM. "D" | DIM. "E" |
| A                                 | 12   | BENT 1   | A           | 9"       | 55"      | -        | -        | -        |
| A                                 | 16   | BENT 1   | D           | 5 1/2"   | 0"       | -        | 48"      | -        |
| B                                 | 9    | BENT 1   | D           | 5 1/2"   | 0"       | -        | 66"      | -        |
| B                                 | 11   | BENT 1   | D           | 5 1/2"   | 0"       | -        | 66"      | -        |

| BEAM REPAIR QUANTITY TABLE<br>SPANS A THRU D |        |                    |        |                                     |        |
|--|--------|--------------------|--------|-------------------------------------|--------|
| STEEL PLATES                                 |        | STIFFENER          |        | STEEL BEARING KEEPER ANGLE ASSEMBLY |        |
| LBS.   |        | LBS.               |        | EA.                                 |        |
| ESTIMATE                                     | ACTUAL | ESTIMATE           | ACTUAL | ESTIMATE                            | ACTUAL |
| 815  |        | 105                |        | 1                                   |        |
| BEAM REPAIR CUT-OUT                          |        | BOLTED BEAM REPAIR |        |                                     |        |
| LBS.   |        | LBS.               |        |                                     |        |
| ESTIMATE                                     | ACTUAL | ESTIMATE           | ACTUAL |                                     |        |
| 150  |        | -                  |        |                                     |        |

PROJECT NO. I-6052  
MECKLENBURG COUNTY  
 BRIDGE NO. 590342  
 SHEET 1 OF 2



**DOCUMENT NOT CONSIDERED FINAL  
UNLESS ALL SIGNATURES COMPLETED**

MI ENGINEERING  
 1011 SCHAUB DRIVE, SUITE 100  
 RALEIGH, NC 27606  
 (919) 851-6606  
 FIRM PE NUMBER: P-0671

STATE OF NORTH CAROLINA  
 DEPARTMENT OF TRANSPORTATION  
 RALEIGH

**SUPERSTRUCTURE  
 BEAM REPAIR  
 LOCATIONS  
 SPANS A & B**

| REVISIONS |     |       |     |     |       | SHEET NO. |
|-----------|-----|-------|-----|-----|-------|-----------|
| NO.       | BY: | DATE: | NO. | BY: | DATE: |           |
| 1         |     |       | 3   |     |       | S8-7      |
| 2         |     |       | 4   |     |       |           |

TOTAL SHEETS: 108

DRAWN BY : B.E. LANNING DATE : 10/2022  
 CHECKED BY : B.E. ATKINSON DATE : 10/2022  
 DESIGN ENGINEER OF RECORD : B.E. ATKINSON DATE : 10/2022