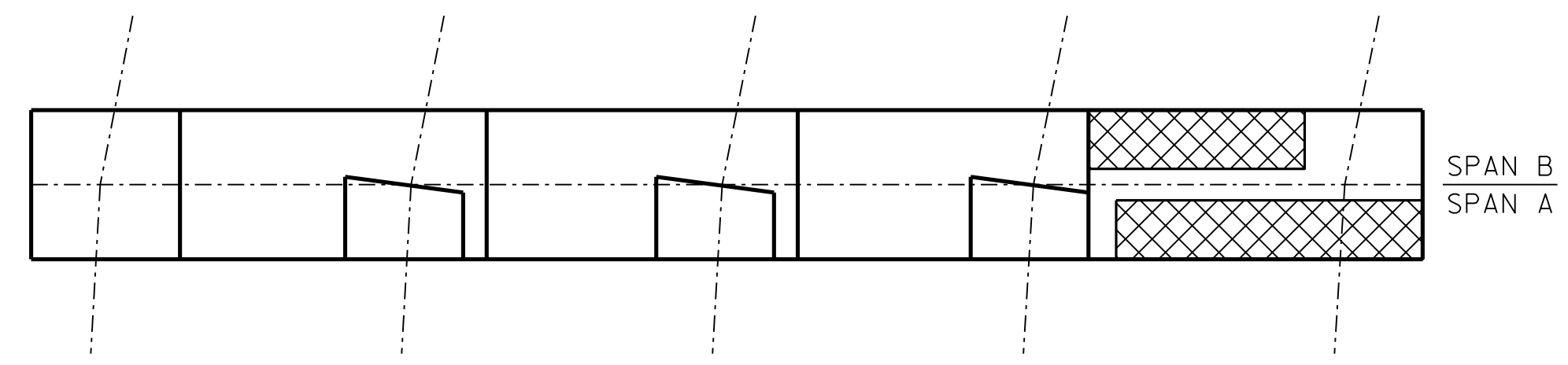
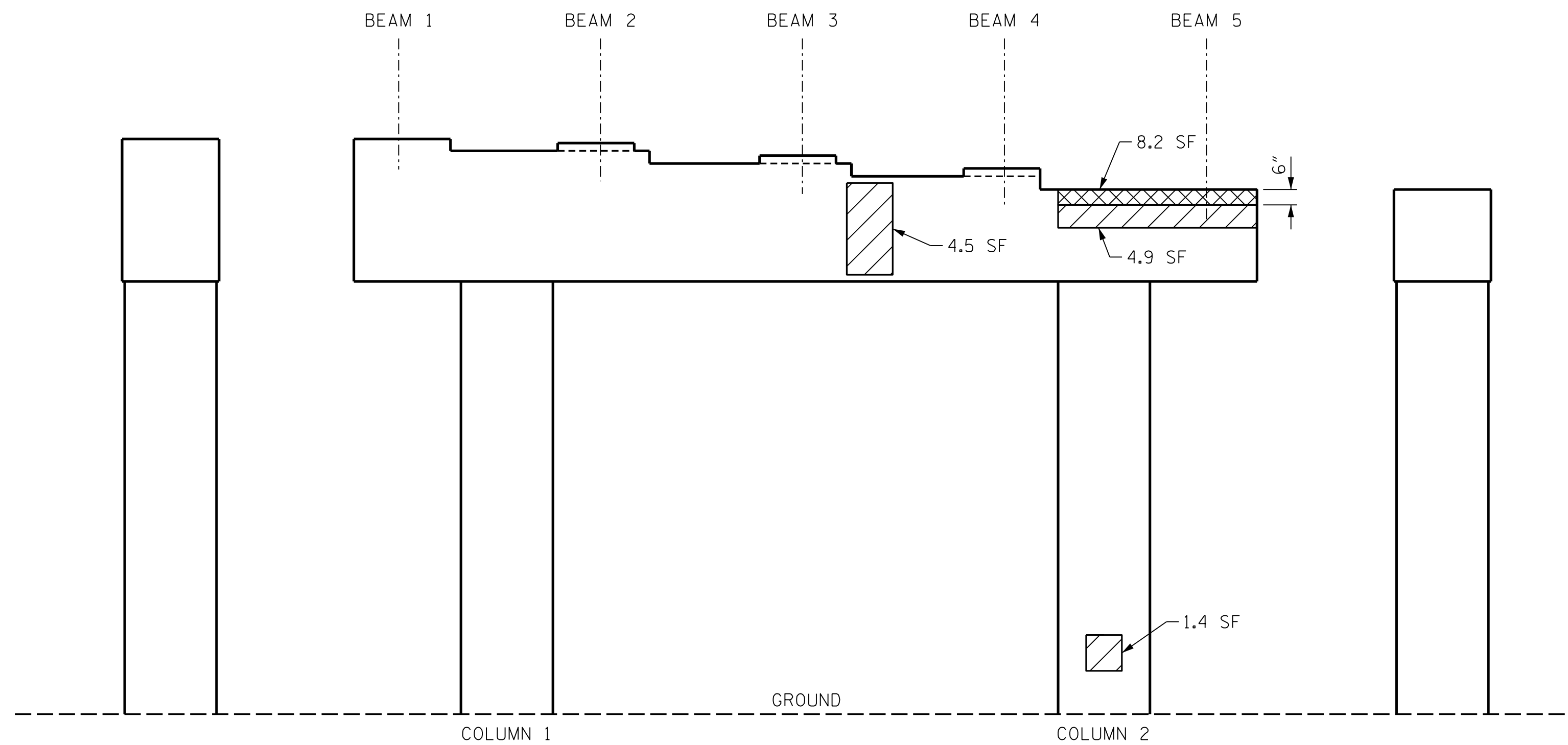


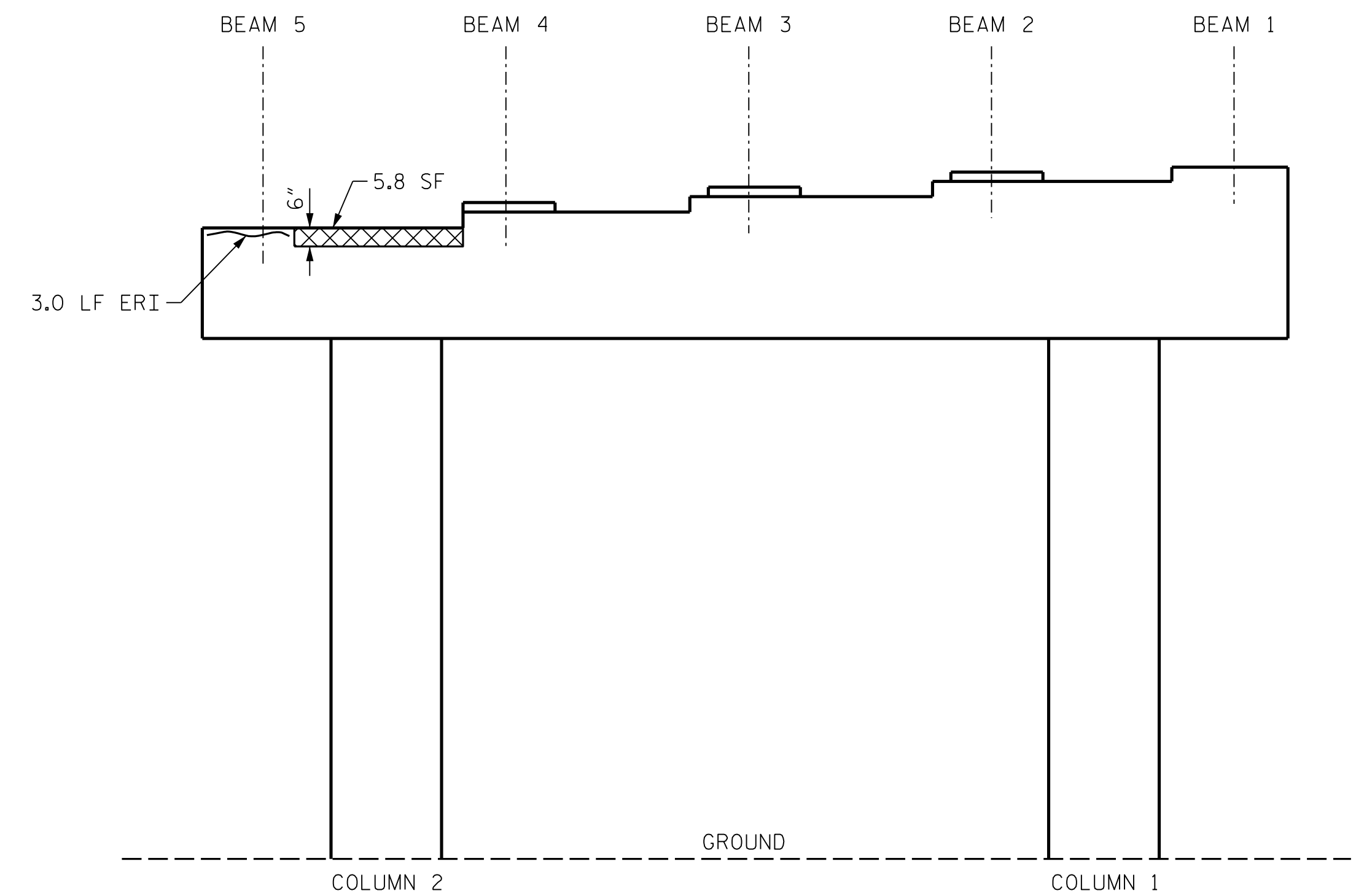
1/12/2023 9:17:59 AM User: blanning
 Filename: N:\NC Bridges\W2100139-I-6052-101\Meck Co.Br. Preservation\Structures\401-015-I-6052.SML\BT1-590281.dgn



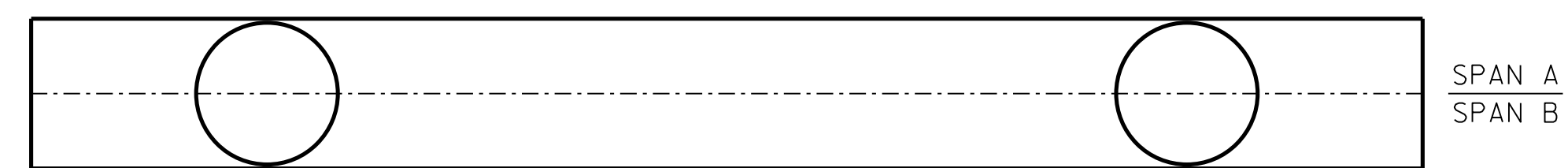
PLAN
TOP OF CAP



ELEVATION
SPAN A



ELEVATION
SPAN B



PLAN
BOTTOM OF CAP
(LOOKING UP)

NOTES:

REPAIR LOCATIONS AND ESTIMATE OF QUANTITIES ARE GIVEN WITH THE BEST INFORMATION AVAILABLE. IF ADDITIONAL REPAIRS NOT SHOWN ON THE DRAWINGS ARE DEEMED NECESSARY BY THE INSPECTOR OR ENGINEER THE CONTRACTOR SHALL NOTE ON THE DRAWINGS THE APPROXIMATE LOCATION AND DESCRIPTION OF THE REPAIRS AND ADJUST THE ACTUAL QUANTITIES ENTERED INTO THE REPAIR QUANTITY TABLE.

FOR REPAIRS, SEE "TYPICAL CAP, COLUMN AND UNDERDECK REPAIR DETAILS" SHEET.

SHOTCRETE REPAIRS MAY BE REPLACED WITH CONCRETE REPAIRS WITH THE APPROVAL OF THE ENGINEER.

FOR SHOTCRETE REPAIRS, SEE SPECIAL PROVISIONS.

FOR CONCRETE REPAIRS, SEE SPECIAL PROVISIONS.

FOR EPOXY RESIN INJECTION, SEE SPECIAL PROVISIONS.

CLEAN AND REMOVE DEBRIS FROM THE TOP OF THE CAP AND APPLY EPOXY PROTECTIVE COATING TO THE TOP SURFACES OF THE CAP. THE CONTRACTOR SHALL NOT COAT THE AREA OF THE CAP BENEATH THE MASONRY PLATES. FOR EPOXY COATING AND DEBRIS REMOVAL, SEE SPECIAL PROVISIONS.

CONCRETE REPAIRS TO THE BENT CAP MAY REQUIRE BRIDGE JACKING. FOR BRIDGE JACKING, SEE "JACKING DETAIL" SHEET.

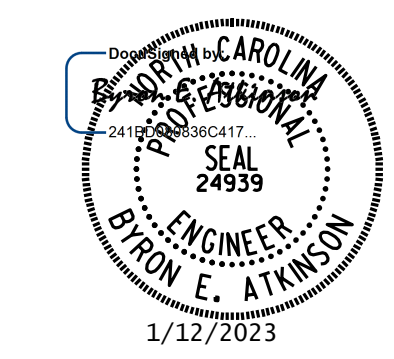
AS-BUILT REPAIR QUANTITY TABLE

| BENT 1 | QUANTITIES | | | |
|-----------------------|------------|-----------|----------|-----------|
| | ESTIMATE | | ACTUAL | |
| SHOTCRETE REPAIRS | AREA SF | VOLUME CF | AREA SF | VOLUME CF |
| CAP (VERTICAL FACE) | 9.4 | 4.7 | | |
| CAP (HORIZONTAL FACE) | 0.0 | 0.0 | | |
| COLUMN | 1.4 | 0.7 | | |
| CONCRETE REPAIRS | AREA SF | VOLUME CF | AREA SF | VOLUME CF |
| CAP | 14.0 | 7.0 | | |
| EPOXY RESIN INJECTION | LIN. FT. | | LIN. FT. | |
| CAP | 3.0 | | | |
| COLUMN | 0.0 | | | |
| EPOXY COATING | AREA SF | AREA SF | | |
| TOP OF CAP | 93.5 | | | |

VALUES IN CHART REPRESENT ESTIMATED REPAIR TOTALS AFTER REMOVAL OF UNSOUND CONCRETE. MIN. OF 1" BEHIND REBAR AND MIN. 2" CL. TO SAWCUT. SEE REPAIR DETAILS.

KEY

- SHOTCRETE REPAIR
- ERI EPOXY RESIN INJECTION
- CONCRETE REPAIR



DOCUMENT NOT CONSIDERED FINAL UNLESS ALL SIGNATURES COMPLETED

MI ENGINEERING
 1011 SCHAUB DRIVE, SUITE 100
 RALEIGH, NC 27606
 (919) 851-6606
 FIRM PE NUMBER : P-0671

PROJECT NO. I-6052
 MECKLENBURG COUNTY
 BRIDGE NO. 590281

STATE OF NORTH CAROLINA
 DEPARTMENT OF TRANSPORTATION
 RALEIGH
 SUBSTRUCTURE
 BENT 1

| REVISIONS | | | | | | SHEET NO. |
|-----------|-----|-------|-----|-----|-------|--------------------------|
| NO. | BY: | DATE: | NO. | BY: | DATE: | |
| 1 | | | 3 | | | S1-8 TOTAL SHEETS 108 |
| 2 | | | 4 | | | |

| | |
|---|----------------|
| DRAWN BY : B.E. LANNING | DATE : 10/2022 |
| CHECKED BY : B.E. ATKINSON | DATE : 10/2022 |
| DESIGN ENGINEER OF RECORD : B.E. ATKINSON | DATE : 10/2022 |