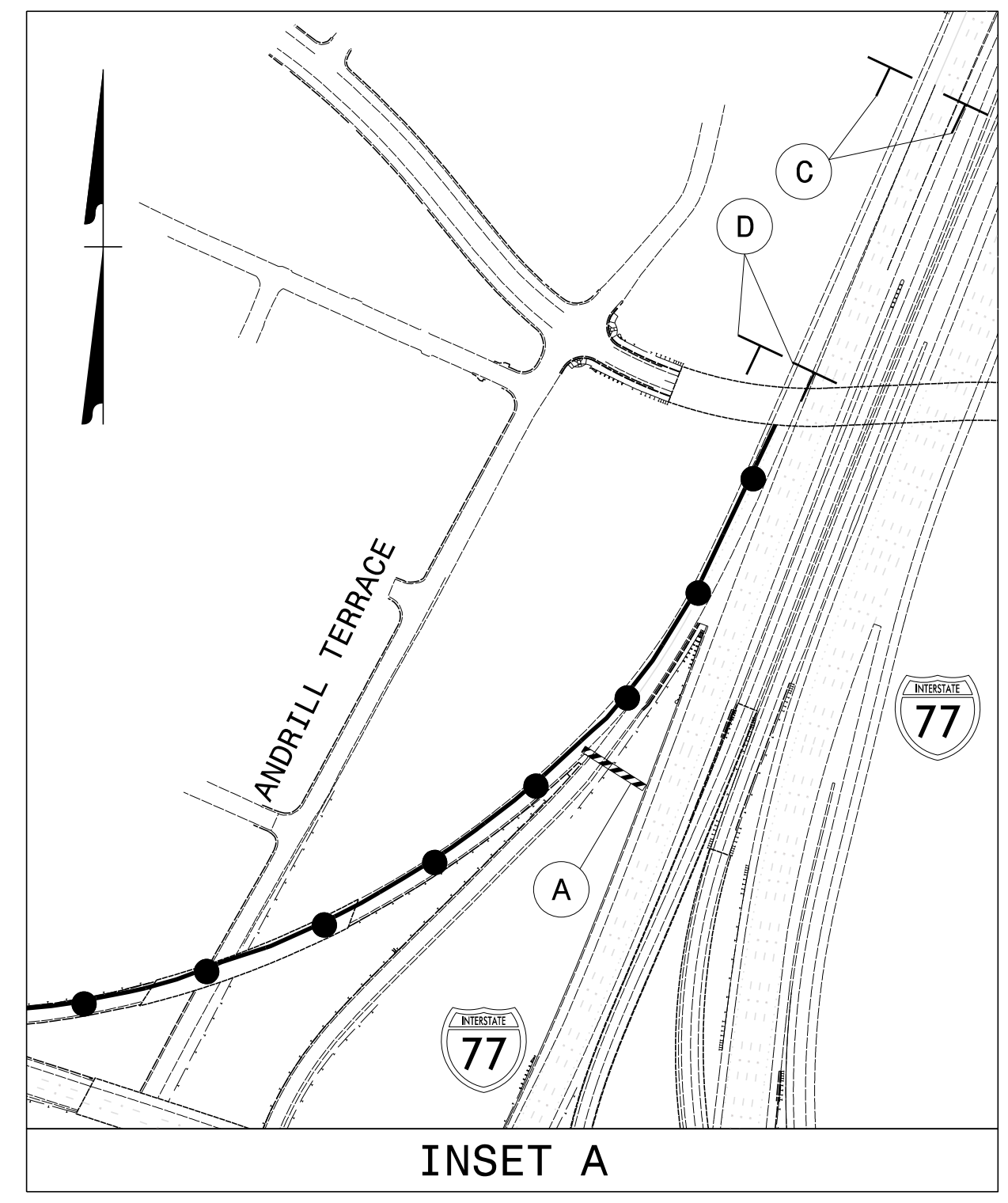
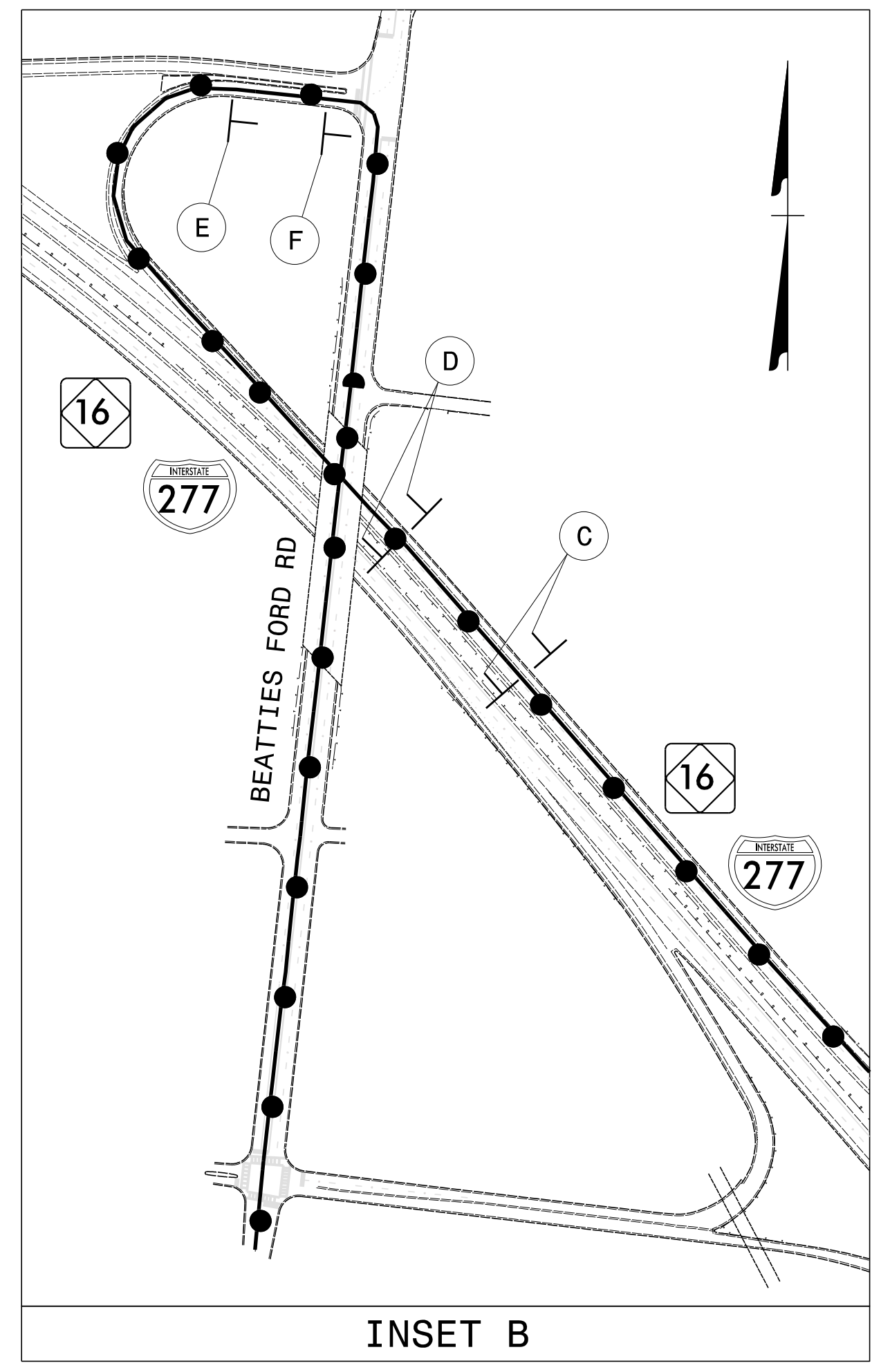
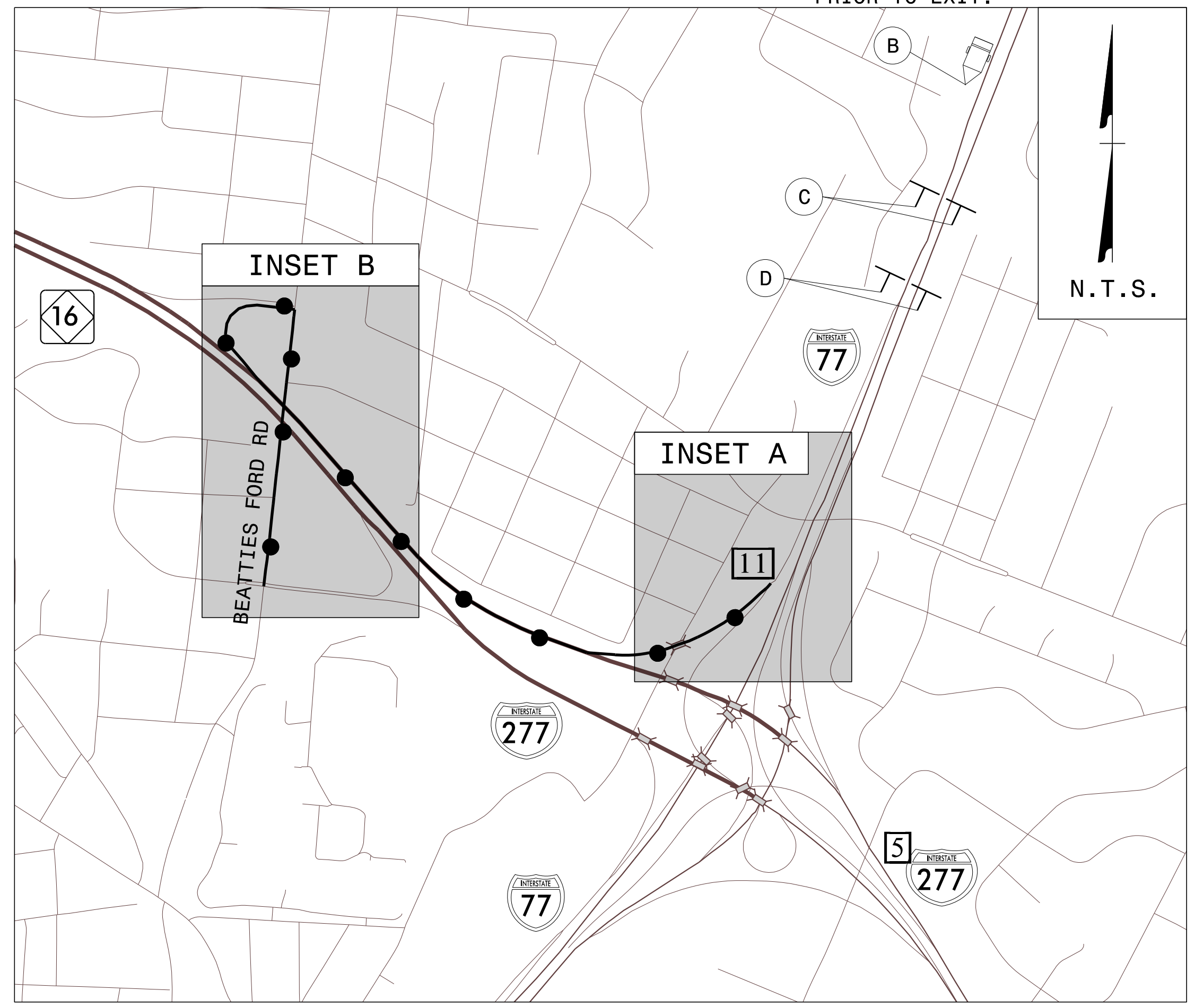
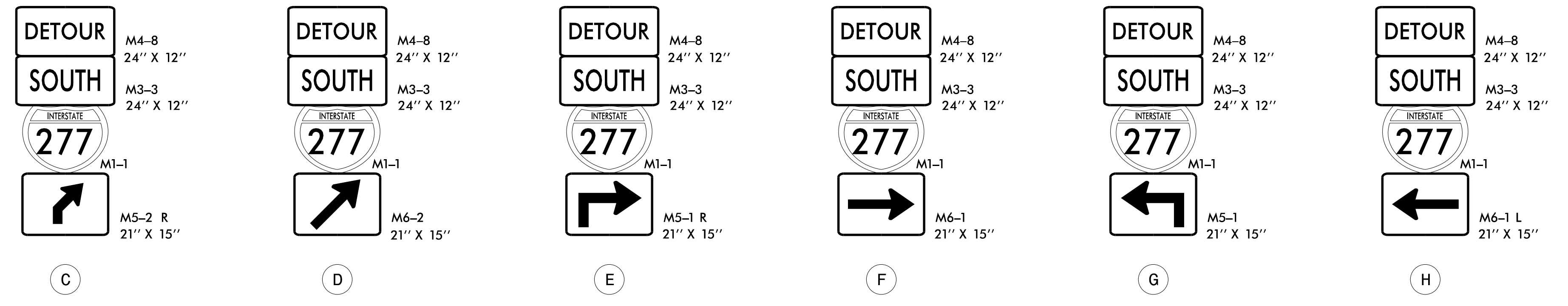
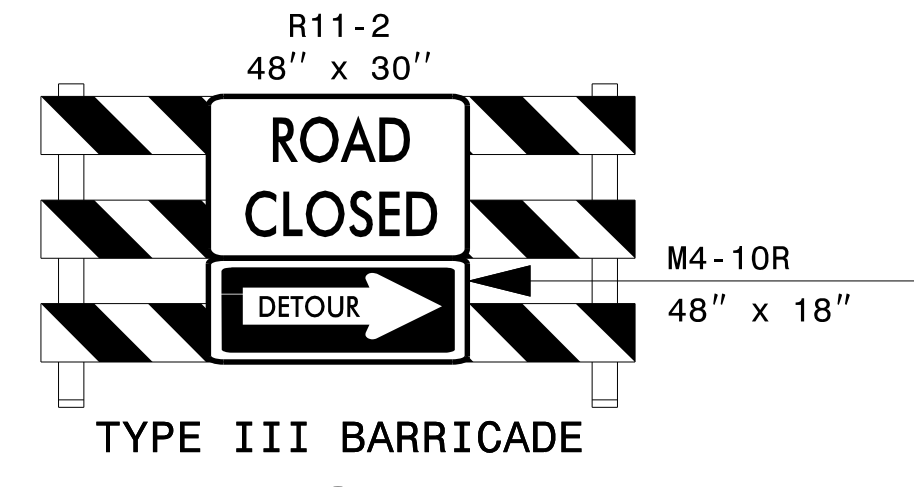


** PLACE PCMS 1 MILE PRIOR TO EXIT.



** SEE TMP-35 FOR DRUM PLACEMENT TO CLOSE RAMP



DETOUR DESCRIPTION:

SOUTH: I-77 SOUTH TO EXIT 11A 16 NORTH (BROOKSHIRE FRWY WEST) TO BEATTIES FORD ROAD TO NC 16 SOUTH (RAMP 1)

NOTES:

1. TRAFFIC CONTROL DEVICES (A) THRU (H) SHALL BE INSTALLED PER ENGINEER'S INSTRUCTIONS.
2. ALL SIGNAGE IS SPACED PER RSD 1101.11 SHEET 4 OF 4, UNLESS OTHERWISE NOTED.
3. USE THIS SHEET IN CONJUNCTION WITH RSD 1101.01 SHEETS 1 THRU 3 OF 3, TMP-3, TMP-6, TMP-26, AND TMP-27.

APPROVED: <i>Jacob H. Duke</i> DATE: 1/25/2023 DOCUMENT NOT CONSIDERED FINAL UNLESS ALL SIGNATURES COMPLETED			RAMP 3 DETOUR B
--	--	--	--------------------

1/25/2023
 I-6052-TC-TMP-RAMP-3B-DETOUR.dgn
 User: jdebone