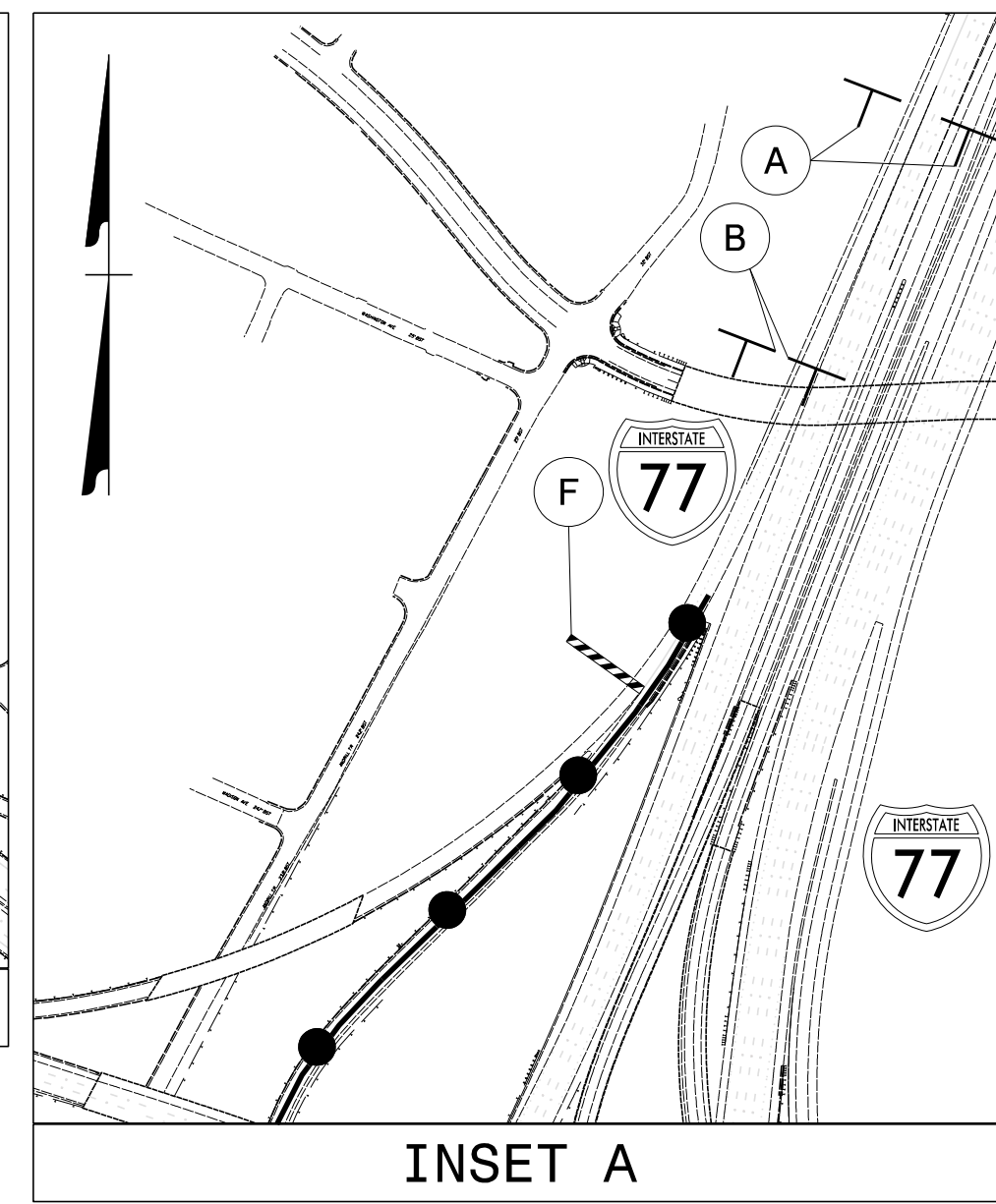
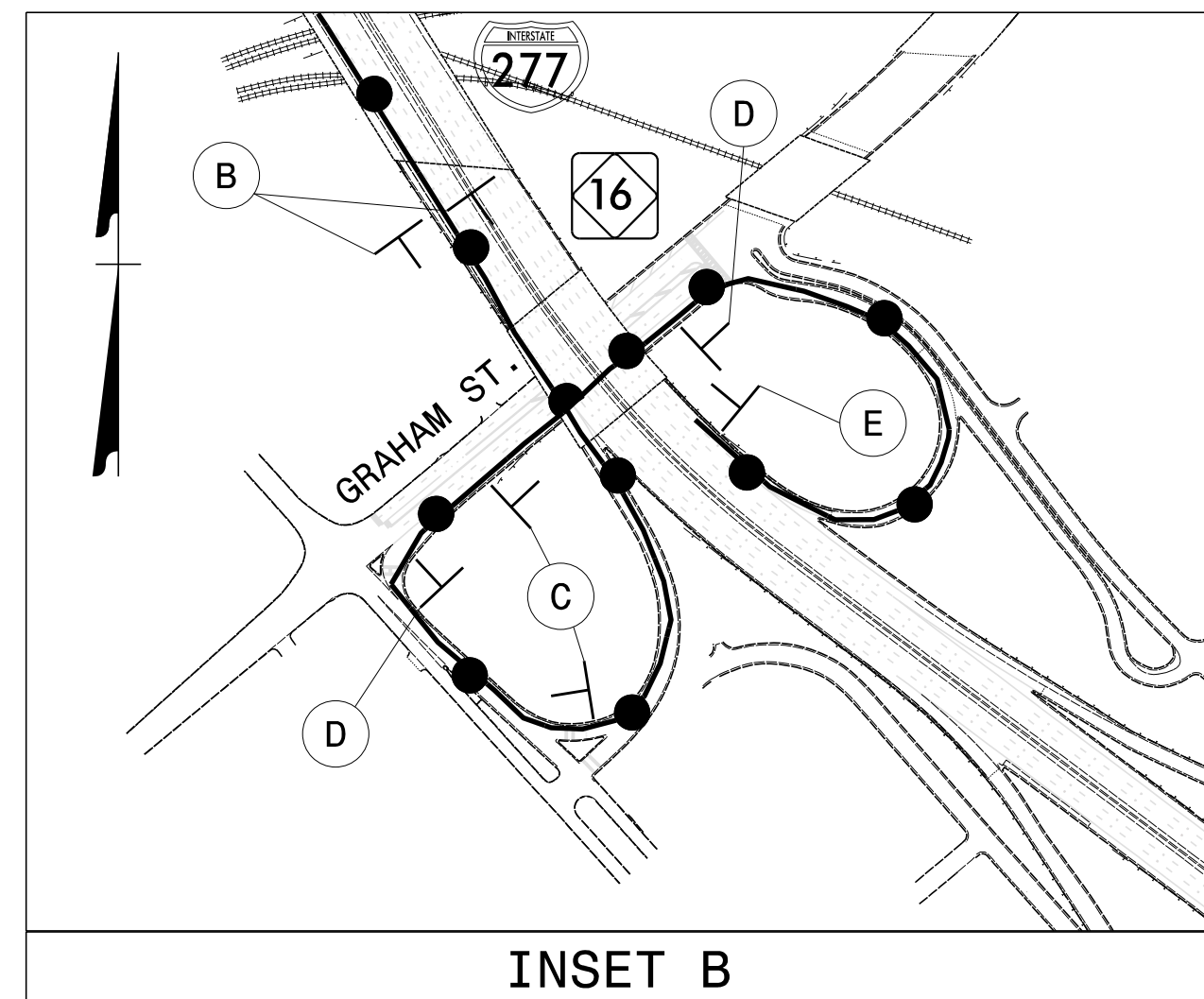
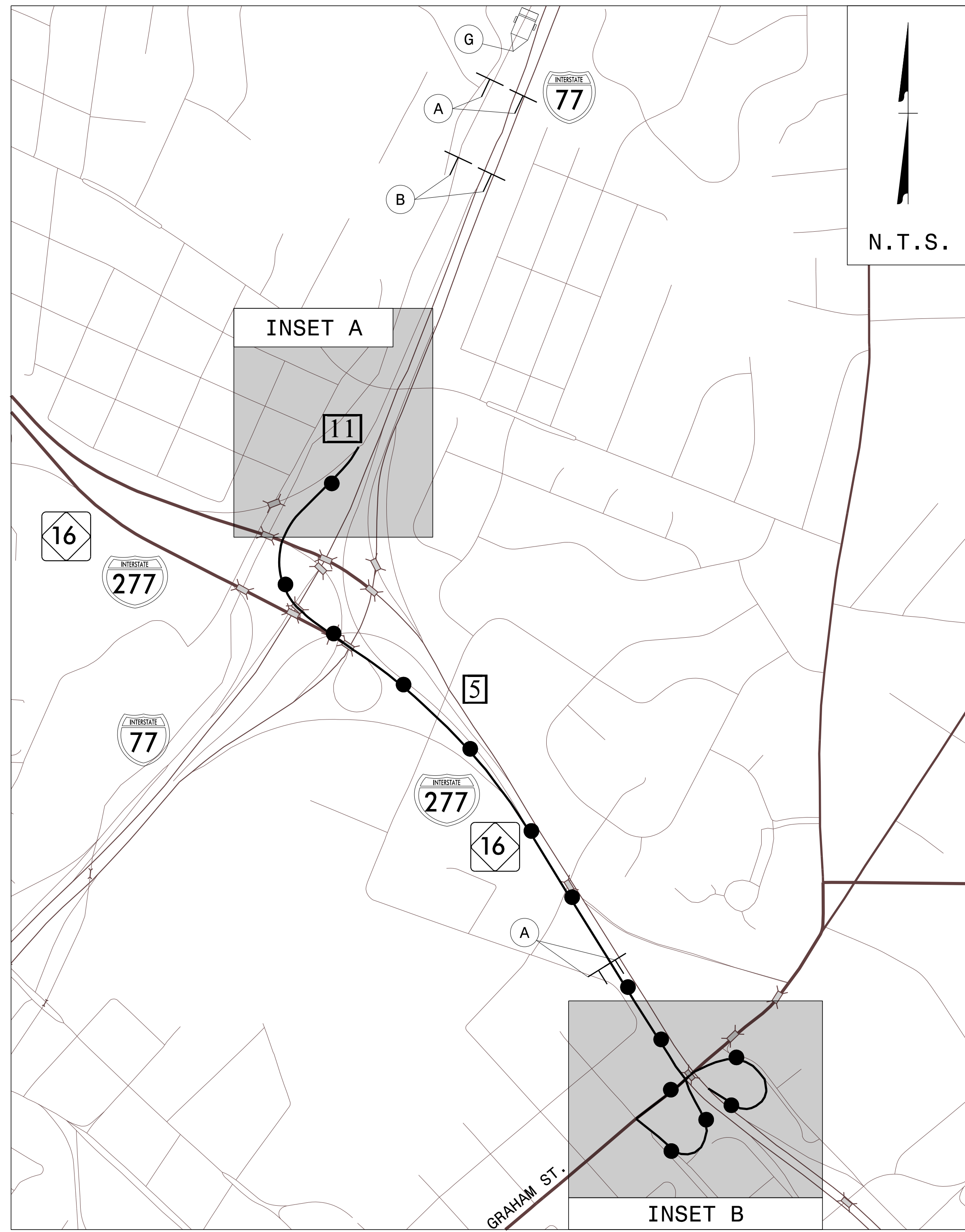
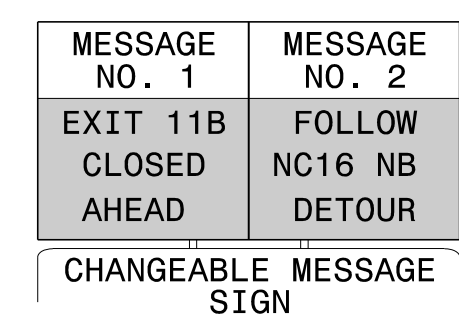
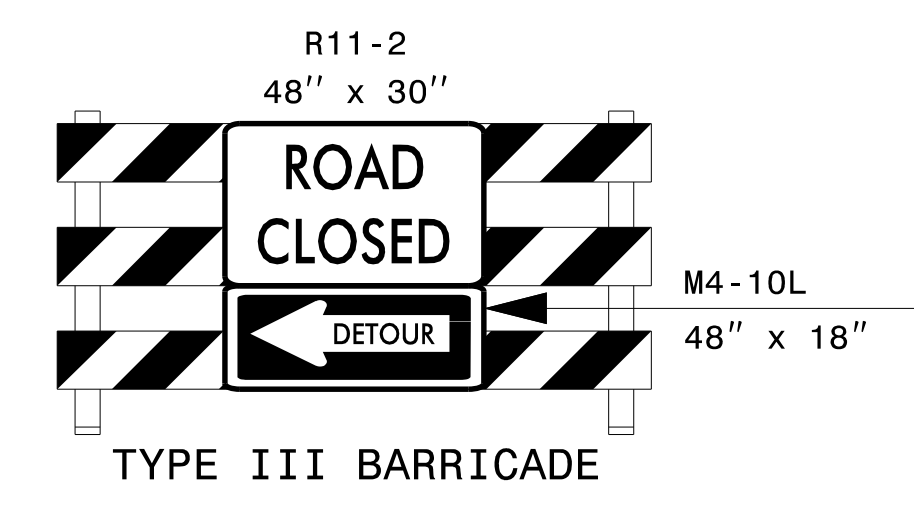
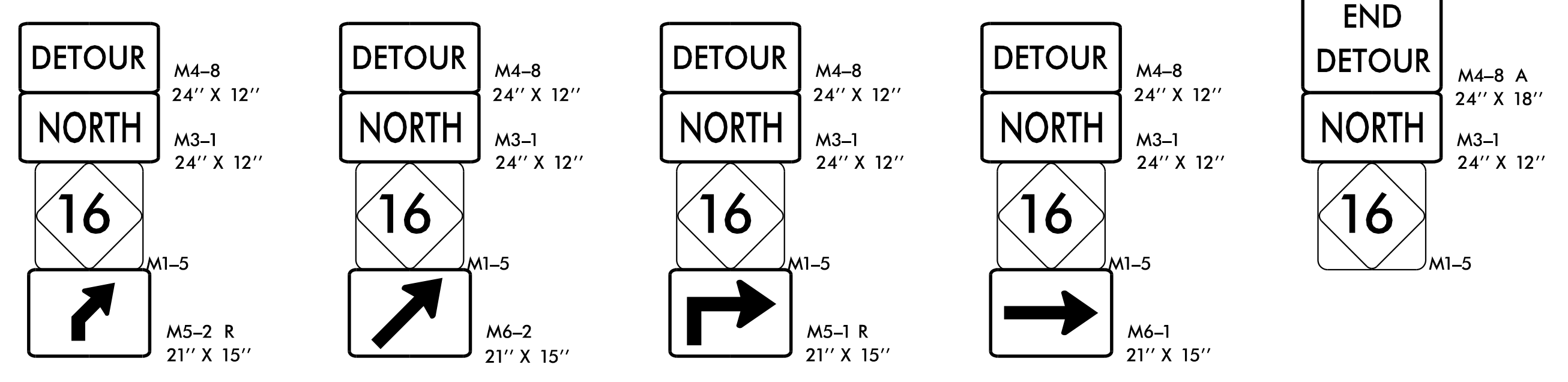


** PLACE PCMS 1 MILE PRIOR TO EXIT.



** SEE TMP-36 FOR DRUM PLACEMENT TO CLOSE RAMP



DETOUR DESCRIPTION:

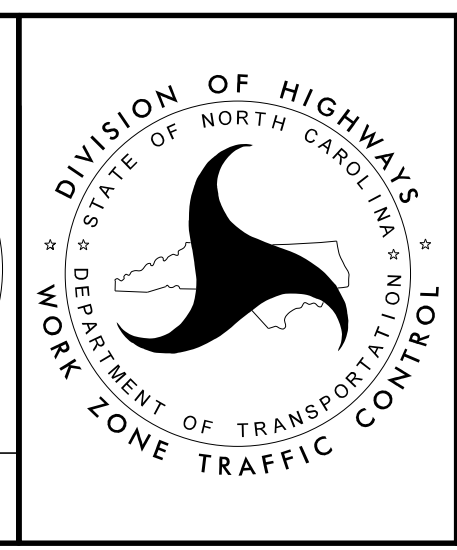
SOUTH: I-77 SOUTH TO EXIT 11A NC16 SOUTH (BROOKSHIRE FRWY EAST)
 TO EXIT 4 US29/NC49 (GRAHAM ST) TO NC16 NORTH

NOTES:

1. TRAFFIC CONTROL DEVICES (A) THRU (G) SHALL BE INSTALLED PER ENGINEER'S INSTRUCTIONS.
2. ALL SIGNAGE IS SPACED PER RSD 1101.11 SHEET 4 OF 4 UNLESS OTHERWISE NOTED.
3. USE THIS SHEET IN CONJUNCTION WITH RSD 1101.01 SHEETS 1 AND 2 OF 3, TMP-23, TMP-24, AND TMP-36.

APPROVED: *Jacob H. Duke*
 DATE: 1/25/2023

DOCUMENT NOT CONSIDERED FINAL UNLESS ALL SIGNATURES COMPLETED



RAMP 5 DETOUR

1/25/2023 I-6052_TC_TMP_RAMP_5_DETOUT.dgn User: jtebone