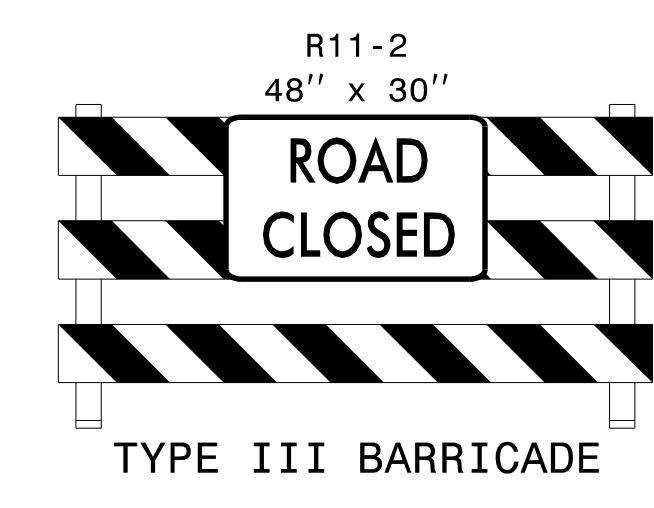
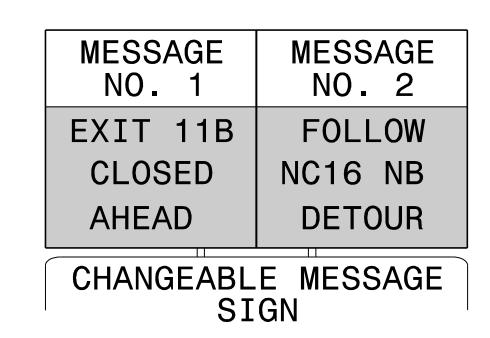


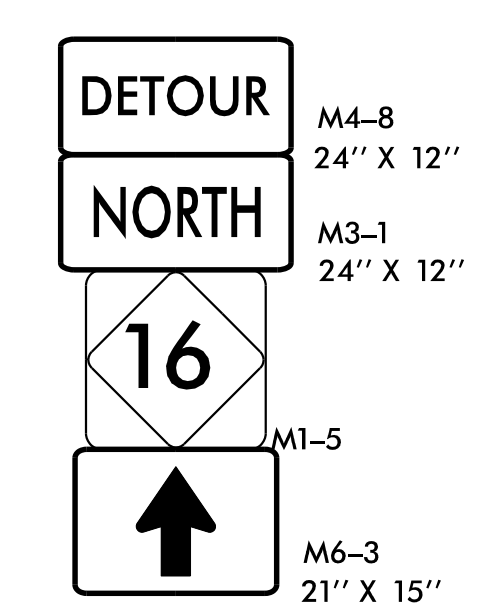
\*\* PLACE DRUMS 2' OFF THE LANE LINE FOR THE FULL LENGTH OF THE EXIT LANE AT 55' SPACING AND EXTEND 100' BEYOND THE GORE AREA WITH 100' DOWNSTREAM TAPER.



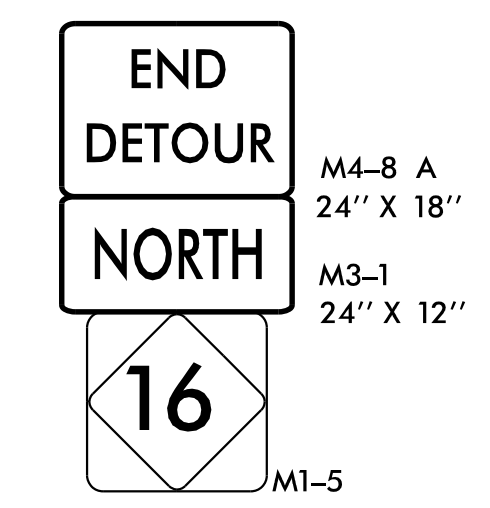
A



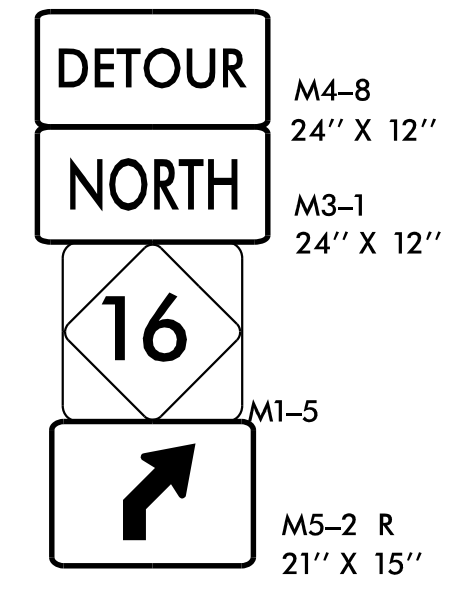
D



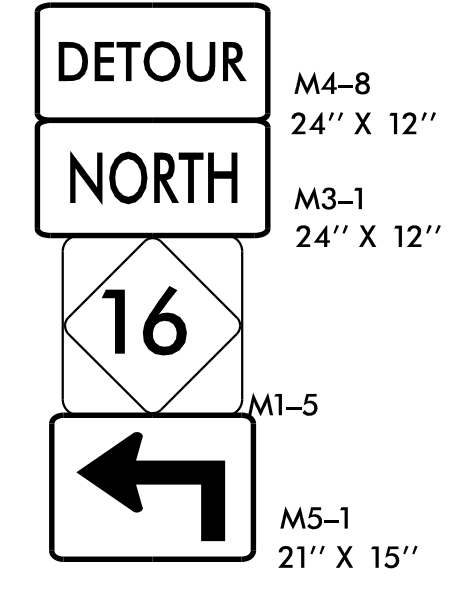
G



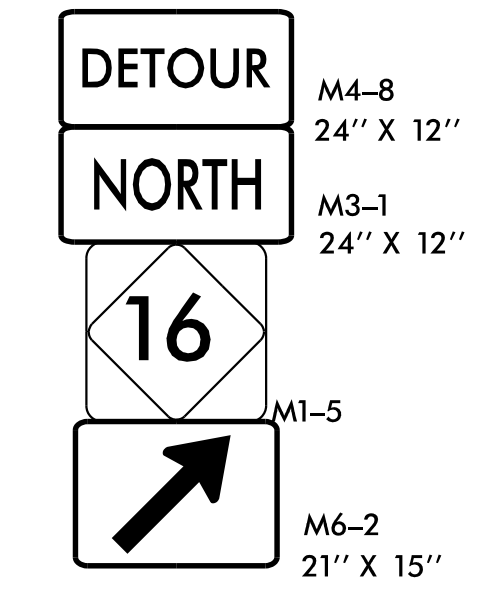
H



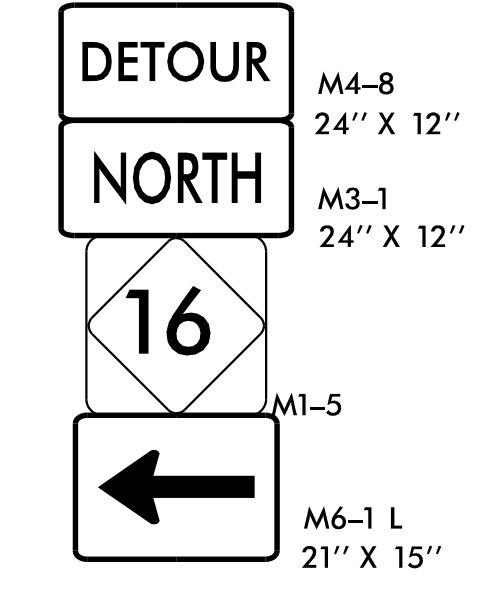
B



E



C



F

**DETOUR DESCRIPTION:**

NORTH: I-77 NORTH TO EXIT 12 (LA SALLE ST.) TO I-77 SOUTH TO EXIT 11B NC 16 NORTH (BROOKSHIRE FRWY WEST).

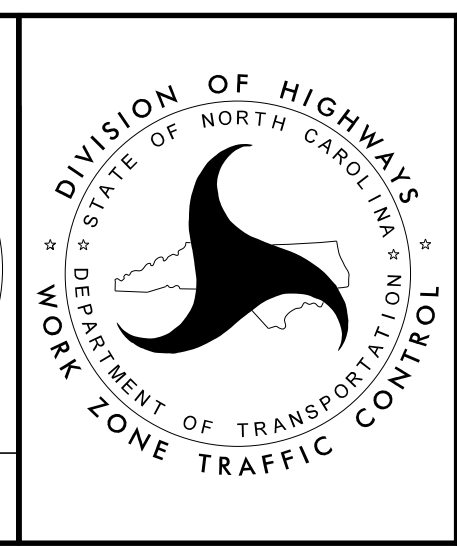
**NOTES:**

1. TRAFFIC CONTROL DEVICES (A) THRU (J) SHALL BE INSTALLED PER ENGINEER'S INSTRUCTIONS.
2. ALL SIGNAGE IS SPACED PER RSD 1101.11 SHEET 4 OF 4 UNLESS OTHERWISE NOTED.
3. USE THIS SHEET IN CONJUNCTION WITH TMP-4, TMP-15, AND TMP-20.

APPROVED: *Jacob H. Duke*  
 DATE: 1/25/2023

SEAL  
 043777  
 ENGINEER  
 JACOB H. DUKE

**DOCUMENT NOT CONSIDERED FINAL UNLESS ALL SIGNATURES COMPLETED**



RAMP 4  
 DETOUR

1/25/2023  
 I-6052\_TC\_TMP\_RAMP\_4\_DETOUR.dgn  
 User: jdebone