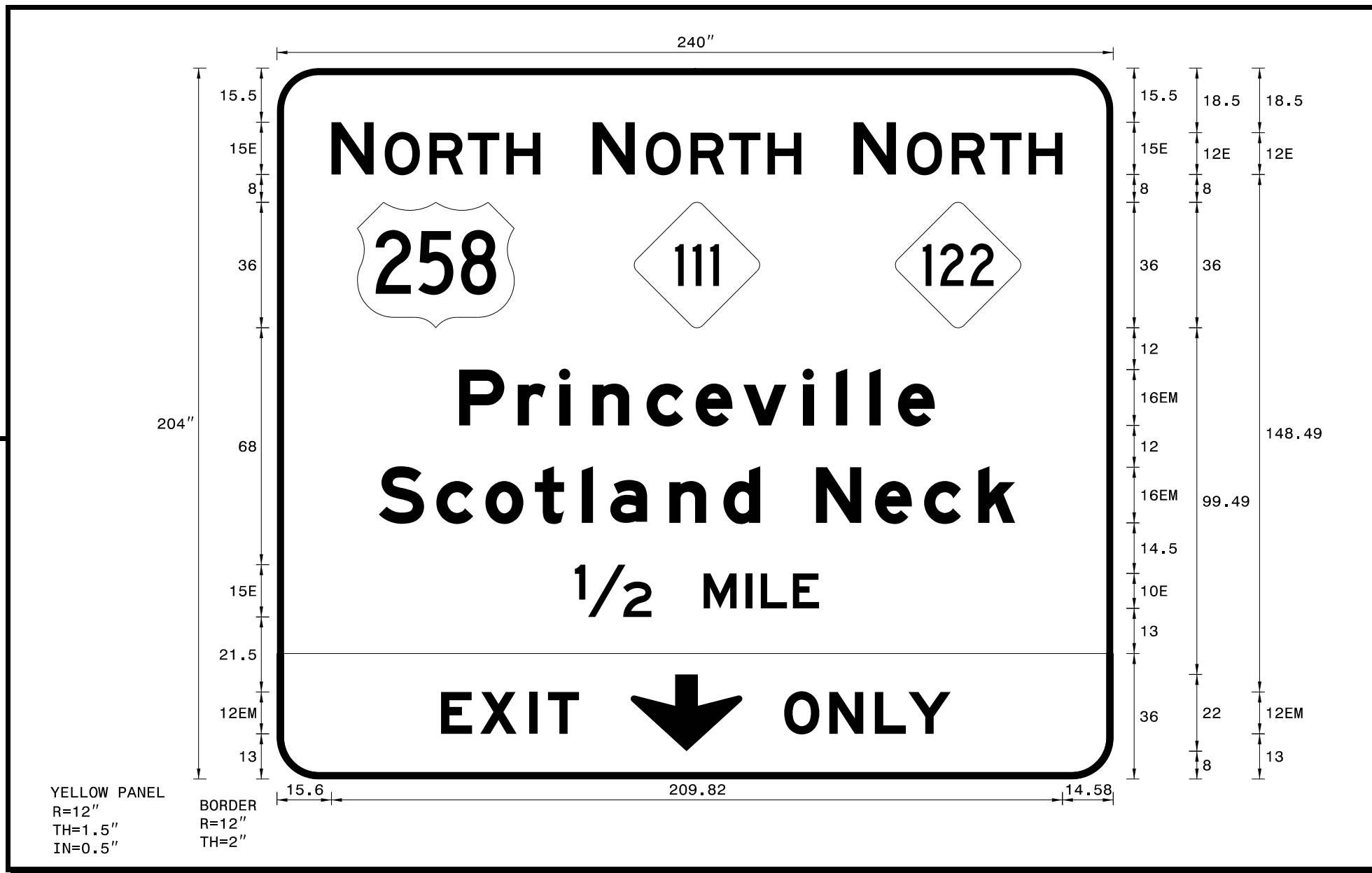


SIGN NUMR: 1B TYPE: A Overhead QUANTITY: 1
 BACKG. COLOR: Green COPY COLOR: White
 DESIGN BY: DME PROJECT ID: I-6041
 CHECKED BY: AIA LOCATION: US-64
 DATE: Jan 06, 2023 DIV: 04
 N. C. DEPARTMENT OF TRANSPORTATION DIVISION OF HIGHWAYS TRANSPORTATION MOBILITY AND SAFETY SIGNING AND DELINEATION

SIGN WIDTH: 240"
 HEIGHT: 204"
 TOTAL AREA: 340.0 Sq.Ft.
 EXIT PANEL AREA: 60.0 Sq.Ft.
 MAT'L: 0.125" ALUMINUM
 BORDER TYPE: FLUSH
 RECESS: 0"
 WIDTH: 2"
 RADII: 12"
 NO. Z BARS: 6
 LENGTH: 232.0"

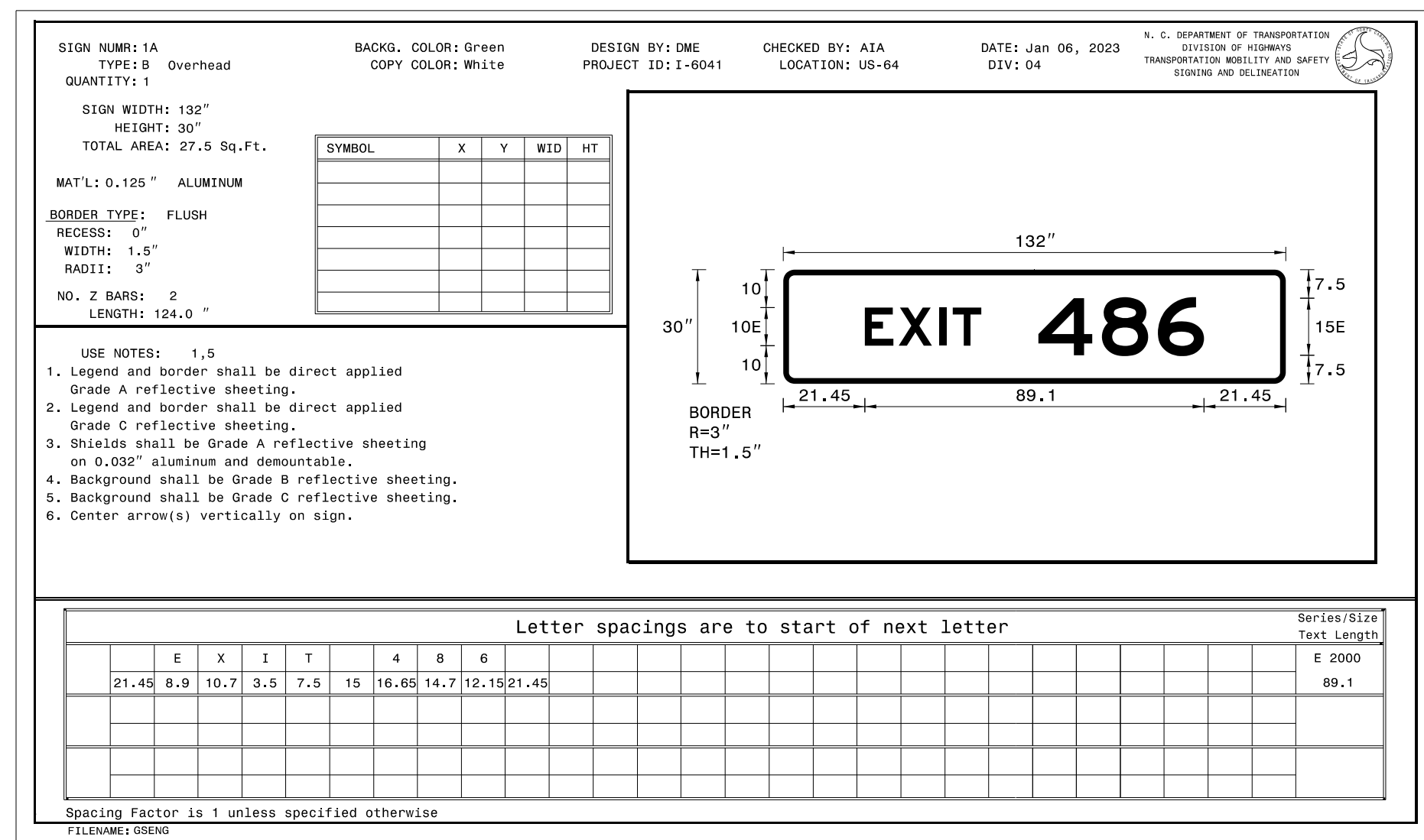
SYMBOL	X	Y	WID	HT
M1_4	23.07	129.5	45	36
NC363A	102.51	129.5	36	36
NC363A	177.45	129.5	36	36
AROWDOWN	101.48	8.01	32.05	22



- USE NOTES: 1,3,5,7
- Legend and border shall be direct applied Grade A reflective sheeting.
 - Legend and border shall be direct applied Grade C reflective sheeting.
 - Shields shall be Grade A reflective sheeting on 0.032" aluminum and demountable.
 - Background shall be Grade B reflective sheeting.
 - Background shall be Grade C reflective sheeting.
 - Center arrow(s) vertically on sign.
 - Bottom panel shall be Yellow Grade C sheeting. Legend shall be direct applied black non-reflective sheeting. Yellow panel is: 240" X 36".

Letter spacings are to start of next letter															Series/Size
															Text Length
N	O	R	T	H											E 2000
15.6	12.15	3.15	12.84	11.04	11.04	9.72	164.46								59.94
N	O	R	T	H											E 2000
90.54	12.15	3.15	12.84	11.04	11.04	9.72	89.52								59.94
N	O	R	T	H											E 2000
165.48	12.15	3.15	12.84	11.04	11.04	9.72	14.58								59.94
P	r	i	n	c	e	v	i	l	l	e					EM 2000
52.27	16.8	11.84	9.6	15.52	14.08	13.76	16.96	9.6	9.6	8.16	10.56	51.25			136.48
S	c	o	t	l	a	n	d	N	e	c	k				EM 2000
29.23	16.48	14.08	14.24	13.44	8.16	16.96	15.52	10.56	16	16.96	14.08	15.52	10.56	28.21	182.56
1/2	M	I	L	E											E 2000
85.47	21.98	15	12	4.4	9.2	7.5	84.45								70.08
E	X	I	T												EM 2000
47.06	11.25	14	5.45	8.88	153.35										39.59
O	N	L	Y												EM 2000
145.55	12.96	13.08	9.6	12.12	46.69										47.76

Spacing Factor is 1 unless specified otherwise
 FILENAME: GSENG



SIGN NUMR: 1A TYPE: B Overhead QUANTITY: 1
 BACKG. COLOR: Green COPY COLOR: White
 DESIGN BY: DME PROJECT ID: I-6041
 CHECKED BY: AIA LOCATION: US-64
 DATE: Jan 06, 2023 DIV: 04
 N. C. DEPARTMENT OF TRANSPORTATION DIVISION OF HIGHWAYS TRANSPORTATION MOBILITY AND SAFETY SIGNING AND DELINEATION

- USE NOTES: 1,5
- Legend and border shall be direct applied Grade A reflective sheeting.
 - Legend and border shall be direct applied Grade C reflective sheeting.
 - Shields shall be Grade A reflective sheeting on 0.032" aluminum and demountable.
 - Background shall be Grade B reflective sheeting.
 - Background shall be Grade C reflective sheeting.
 - Center arrow(s) vertically on sign.

Letter spacings are to start of next letter															Series/Size
															Text Length
E	X	I	T	4	8	6									E 2000
21.45	8.9	10.7	3.5	7.5	15	16.65	14.7	12.15	21.45						89.1

Spacing Factor is 1 unless specified otherwise
 FILENAME: GSENG