

09.08/99

TIP PROJECT: R-2561CA

STATE OF NORTH CAROLINA
DIVISION OF HIGHWAYS

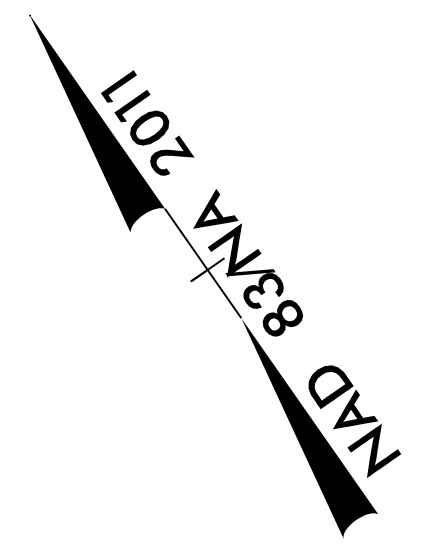
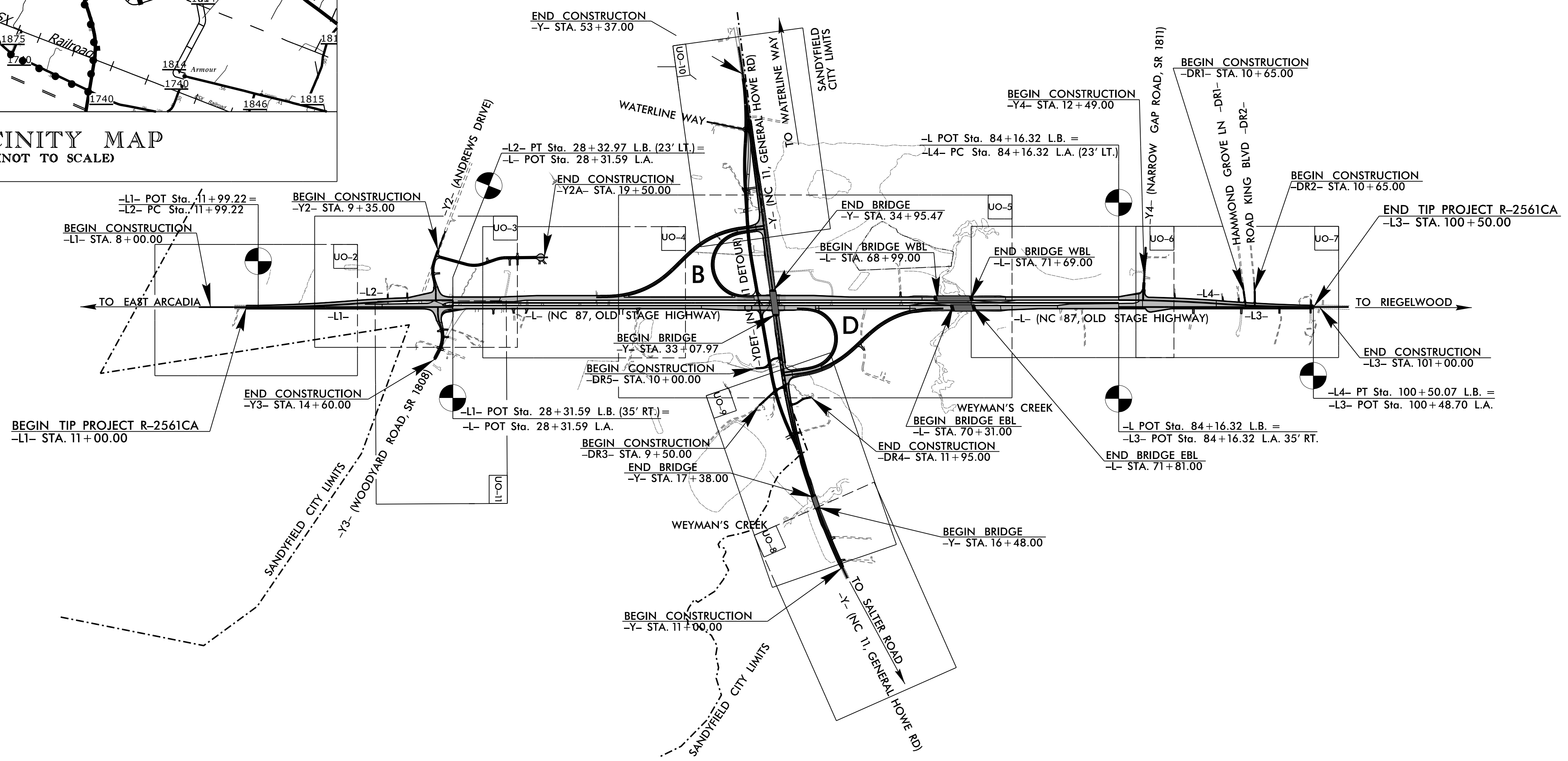
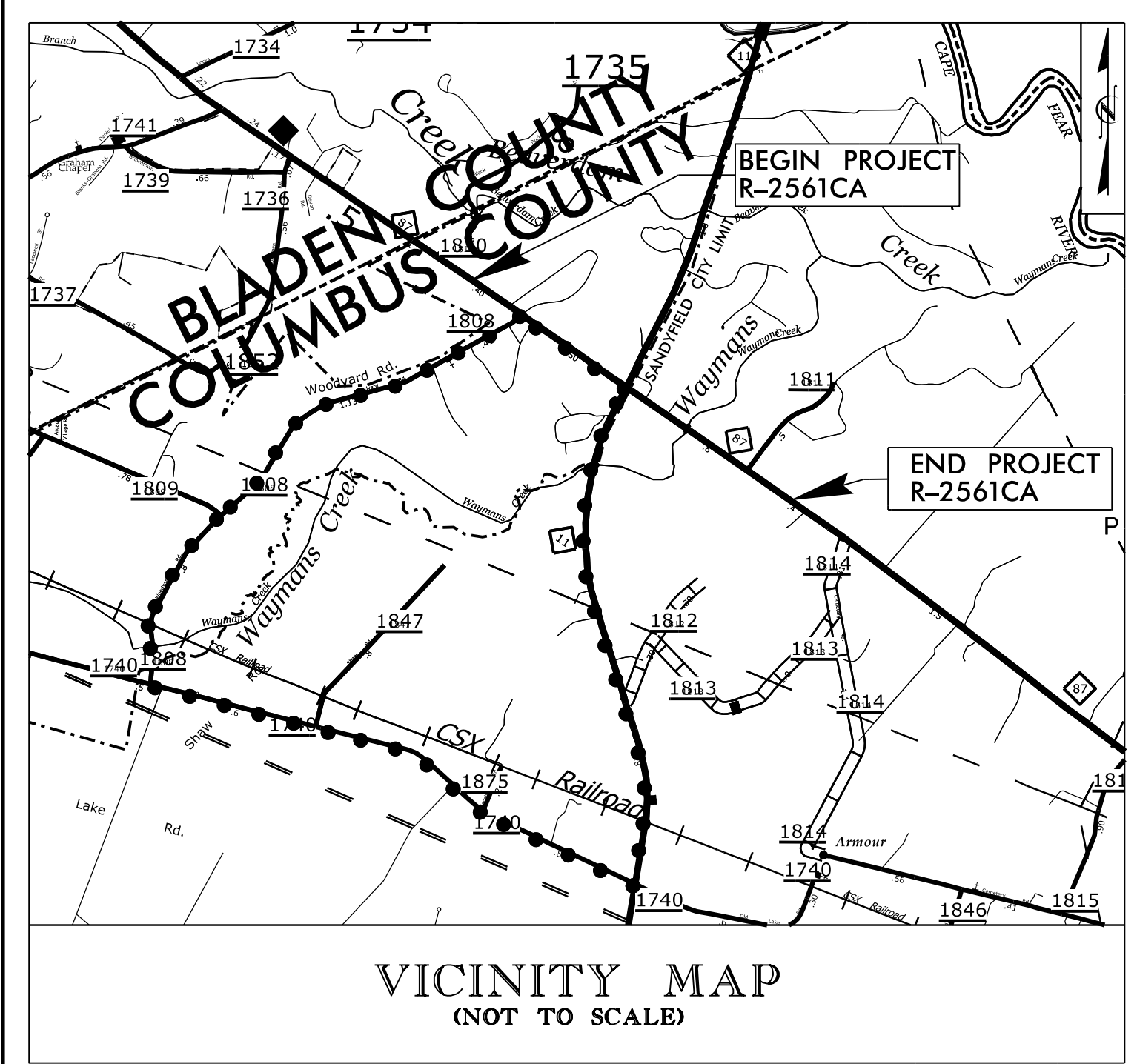
T.I.P. NO.	SHEET NO.
R-2561CA	UO-1

NOTE:
ALL UTILITY WORK SHOWN ON THIS SHEET WILL BE DONE BY OTHERS. NO PAYMENT WILL BE MADE TO THE CONTRACTOR FOR UTILITY WORK SHOWN ON THIS SHEET.

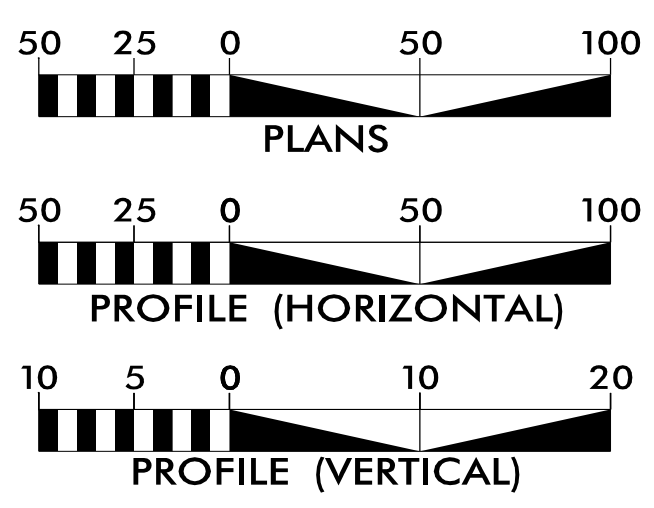
UTILITIES BY OTHERS PLANS COLUMBUS COUNTY

LOCATION: NC 87 (OLD STAGE RD)/NC 11 (GENERAL HOWE RD) INTERCHANGE

TYPE OF WORK: POWER AND COMMUNICATIONS



GRAPHIC SCALES



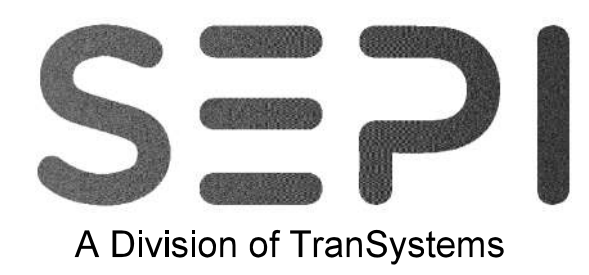
INDEX OF SHEETS

SHEET NO.:	DESCRIPTION:
UO-1	TITLE SHEET
UO-2 THRU UO-14	UBO PLAN SHEETS

UTILITY OWNERS WITH CONFLICTS

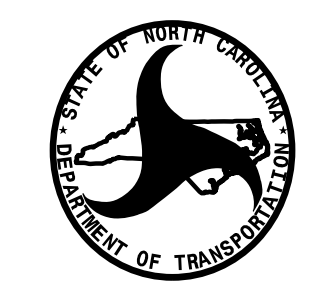
- (A) COMMUNICATIONS - AT&T
- (B) COMMUNICATIONS - CHARTER
- (C) DISTRIBUTION - FOUR COUNTY EMC
- (D) TRANSMISSION - FOUR COUNTY EMC
- (E) COMMUNICATIONS - WINDSTREAM
- (F) COMMUNICATIONS - FOCUS BROADBAND
- (G) COMMUNICATIONS - DUKE

PREPARED IN THE OFFICE OF:



1 Glenwood Avenue
Raleigh, NC 27603
Tel: 919.789.9977
Fax: 919.789.9591
License: C-2197

WILLIAM POPE, PE PROJECT UTILITY COORDINATOR



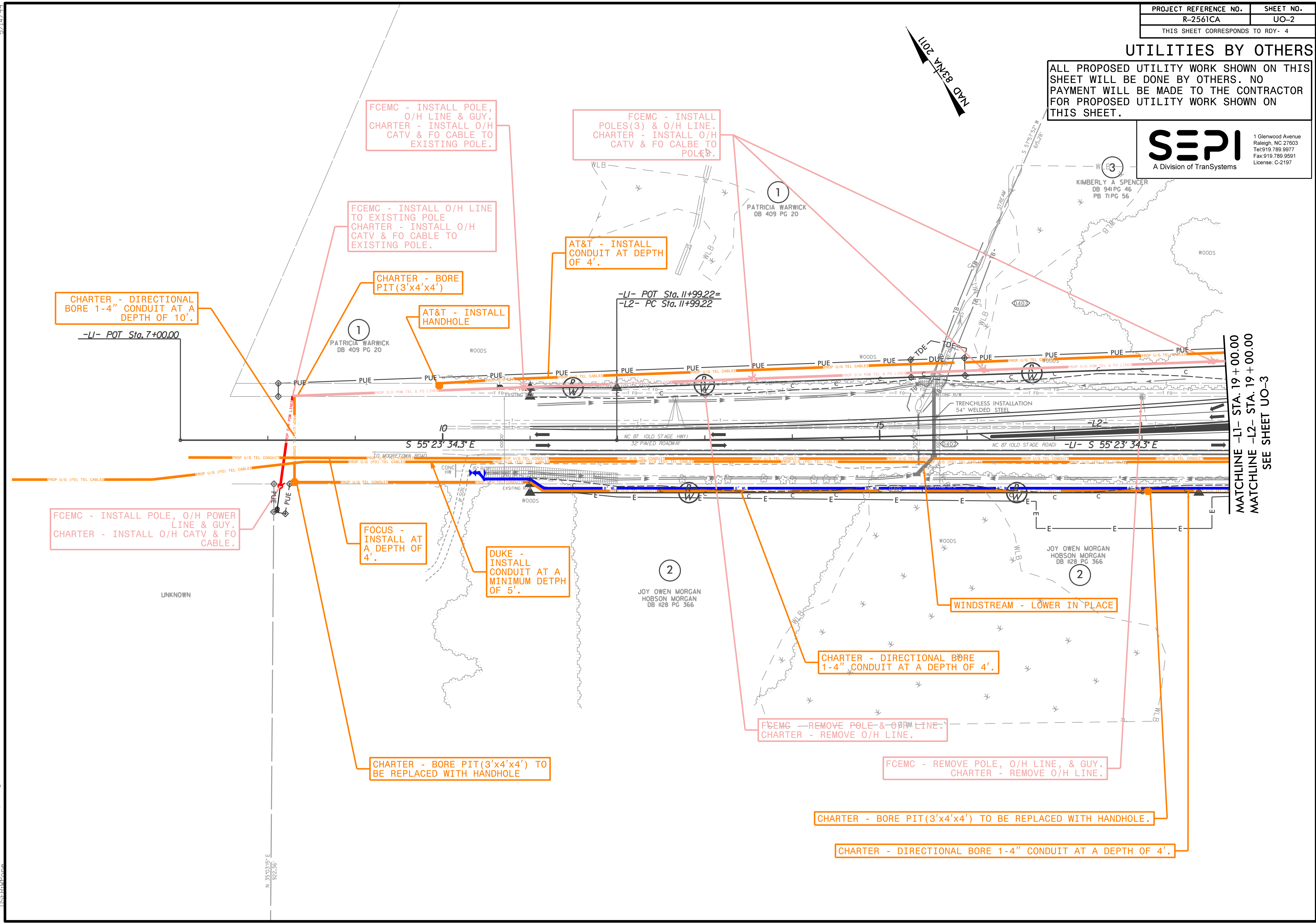
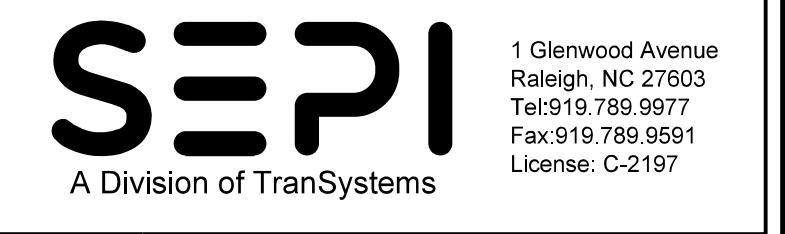
HIGHWAY DIVISION 6
PO BOX 1150, 28302 (MAIL)
558 GILLESPIE ST., 28301 (DELIVERY)
FAVETTEVILLE, NC
PHONE (910) 364-0600
FAX (910) 486-1959
COURIER 14-55-24

RICK HANDLIN UTILITIES ENGINEER
RICK BOUNDS UTILITIES COORDINATOR
RANDY ROGERS UTILITIES COORDINATOR

1/6/2023
I:\PROJECTS\R-2561CA_UT_UO-1\Tsh.dgn
USER:WPOPE

UTILITIES BY OTHERS

ALL PROPOSED UTILITY WORK SHOWN ON THIS SHEET WILL BE DONE BY OTHERS. NO PAYMENT WILL BE MADE TO THE CONTRACTOR FOR PROPOSED UTILITY WORK SHOWN ON THIS SHEET.



FCEMC - INSTALL POLE, O/H LINE & GUY.
CHARTER - INSTALL O/H CATV & FO CABLE TO EXISTING POLE.

FCEMC - INSTALL POLES(3) & O/H LINE.
CHARTER - INSTALL O/H CATV & FO CALBE TO POLES.

FCEMC - INSTALL O/H LINE TO EXISTING POLE
CHARTER - INSTALL O/H CATV & FO CABLE TO EXISTING POLE.

AT&T - INSTALL CONDUIT AT DEPTH OF 4'.

CHARTER - DIRECTIONAL BORE 1-4" CONDUIT AT A DEPTH OF 10'.

CHARTER - BORE PIT(3'x4'x4')

AT&T - INSTALL HANDHOLE

-L1- POT Sta. 11+99.22=
-L2- PC Sta. 11+99.22

-L1- POT Sta. 7+00.00

FCEMC - INSTALL POLE, O/H POWER LINE & GUY.
CHARTER - INSTALL O/H CATV & FO CABLE.

FOCUS - INSTALL AT A DEPTH OF 4'.

DUKE - INSTALL CONDUIT AT A MINIMUM DETPH OF 5'.

WINDSTREAM - LOWER IN PLACE

CHARTER - DIRECTIONAL BORE 1-4" CONDUIT AT A DEPTH OF 4'.

FCEMC - REMOVE POLE & O/H LINE.
CHARTER - REMOVE O/H LINE.

FCEMC - REMOVE POLE, O/H LINE, & GUY.
CHARTER - REMOVE O/H LINE.

CHARTER - BORE PIT(3'x4'x4') TO BE REPLACED WITH HANDHOLE

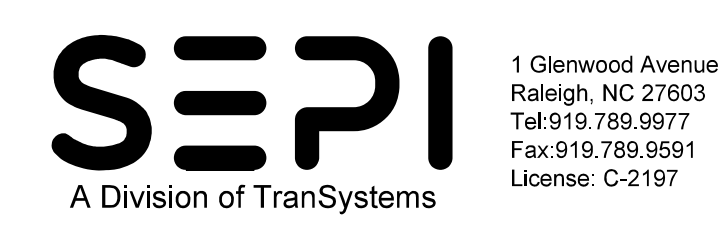
CHARTER - BORE PIT(3'x4'x4') TO BE REPLACED WITH HANDHOLE.

CHARTER - DIRECTIONAL BORE 1-4" CONDUIT AT A DEPTH OF 4'.

MATCHLINE -L1- STA. 19+00.00
MATCHLINE -L2- STA. 19+00.00
SEE SHEET UO-3

5/14/99
1/6/2003-2561CA_Ut_U02_psh.dgn
RISER.dwg

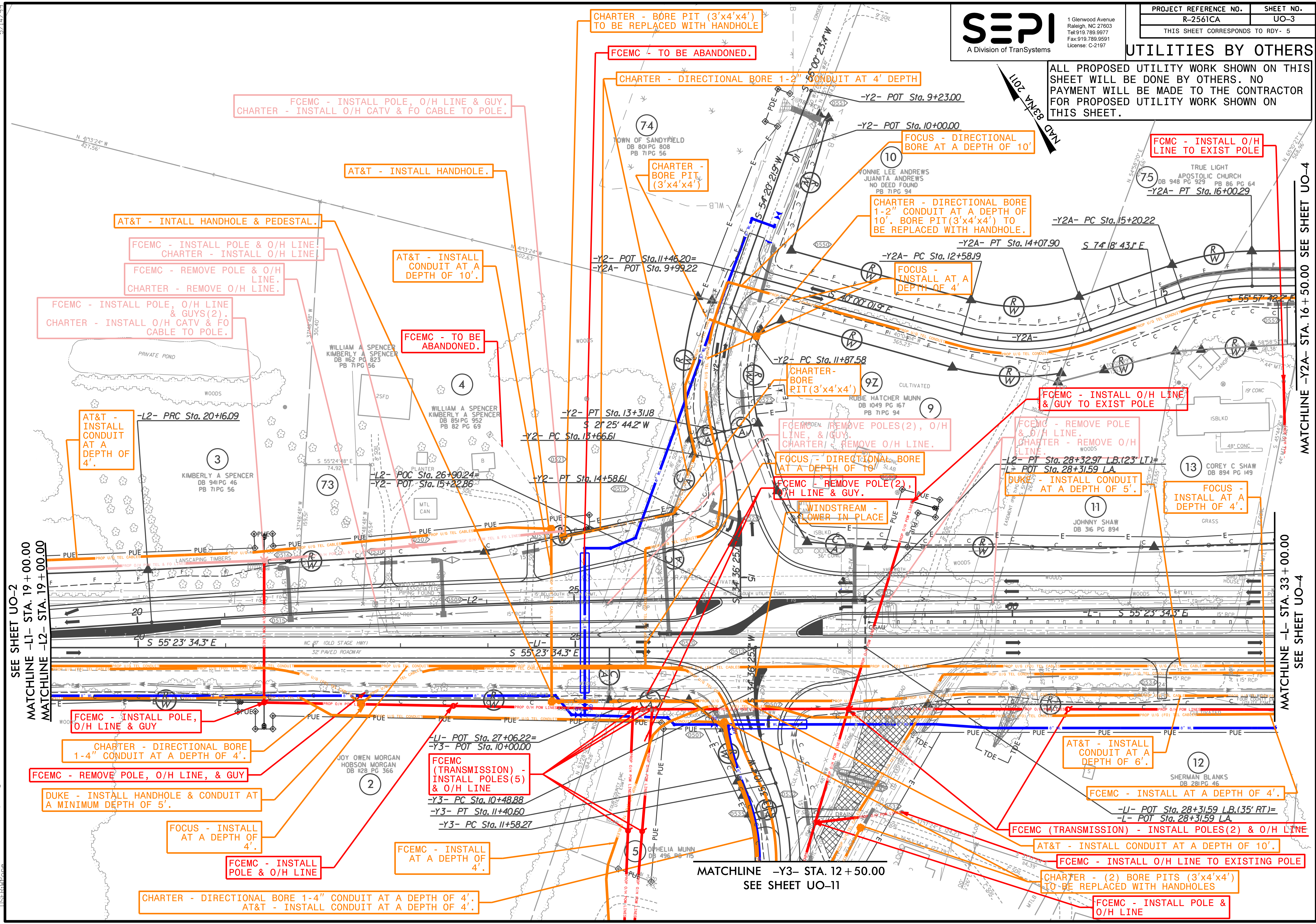
5/14/09
1/6/2003 2:56:1CA Ut-U03_psh.dgn



PROJECT REFERENCE NO.	SHEET NO.
R-2561CA	UO-3
THIS SHEET CORRESPONDS TO RDY- 5	

UTILITIES BY OTHERS

ALL PROPOSED UTILITY WORK SHOWN ON THIS SHEET WILL BE DONE BY OTHERS. NO PAYMENT WILL BE MADE TO THE CONTRACTOR FOR PROPOSED UTILITY WORK SHOWN ON THIS SHEET.



SEE SHEET UO-2
MATCHLINE -L1- STA. 19 +00.00
MATCHLINE -L2- STA. 19 +00.00

MATCHLINE -L- STA. 33 +00.00
SEE SHEET UO-4

MATCHLINE -Y3- STA. 12 +50.00
SEE SHEET UO-11

MATCHLINE -Y2A- STA. 16 +50.00
SEE SHEET UO-4

FCEMC - INSTALL POLE, O/H LINE & GUY.
CHARTER - INSTALL O/H CATV & FO CABLE TO POLE.

AT&T - INSTALL HANDHOLE.

AT&T - INTALL HANDHOLE & PEDESTAL.

FCEMC - INSTALL POLE & O/H LINE
CHARTER - INSTALL O/H LINE

FCEMC - REMOVE POLE & O/H LINE.
CHARTER - REMOVE O/H LINE.

FCEMC - INSTALL POLE, O/H LINE & GUYS(2).
CHARTER - INSTALL O/H CATV & FO CABLE TO POLE.

AT&T - INSTALL CONDUIT AT A DEPTH OF 4'.

-L2- PRC Sta. 20+16.09

AT&T - INSTALL CONDUIT AT A DEPTH OF 10'.

FCEMC - TO BE ABANDONED.

CHARTER - BORE PIT (3'x4'x4') TO BE REPLACED WITH HANDHOLE

FCEMC - TO BE ABANDONED.

CHARTER - DIRECTIONAL BORE 1-2\" CONDUIT AT 4' DEPTH

CHARTER - BORE PIT (3'x4'x4')

FOCUS - DIRECTIONAL BORE AT A DEPTH OF 10'

CHARTER - DIRECTIONAL BORE 1-2\" BORE PIT (3'x4'x4') TO BE REPLACED WITH HANDHOLE.

FOCUS - INSTALL AT A DEPTH OF 4'

FCEMC - INSTALL O/H LINE & GUY TO EXIST POLE

FCEMC - REMOVE POLES(2), O/H LINE, & GUY.
CHARTER - REMOVE O/H LINE.

FOCUS - DIRECTIONAL BORE AT A DEPTH OF 10'

FCEMC - REMOVE POLE(2), O/H LINE & GUY.

WINDSTREAM - FLOWER IN PLACE

FCEMC - REMOVE POLE & O/H LINE.
CHARTER - REMOVE O/H LINE.

DUKE - INSTALL CONDUIT AT A DEPTH OF 5'.

FOCUS - INSTALL AT A DEPTH OF 4'.

FCEMC - INSTALL POLE, O/H LINE & GUY

CHARTER - DIRECTIONAL BORE 1-4\" CONDUIT AT A DEPTH OF 4'.

FCEMC - REMOVE POLE, O/H LINE, & GUY

DUKE - INSTALL HANDHOLE & CONDUIT AT A MINIMUM DEPTH OF 5'.

FOCUS - INSTALL AT A DEPTH OF 4'.

FCEMC - INSTALL POLE & O/H LINE

FCEMC - INSTALL AT A DEPTH OF 4'.

CHARTER - DIRECTIONAL BORE 1-4\" CONDUIT AT A DEPTH OF 4'.
AT&T - INSTALL CONDUIT AT A DEPTH OF 4'.

FCEMC (TRANSMISSION) - INSTALL POLES(5) & O/H LINE

-Y3- PC Sta. 10+48.88

-Y3- PT Sta. 11+40.60

-Y3- PC Sta. 11+58.27

AT&T - INSTALL CONDUIT AT A DEPTH OF 6'.

FCEMC - INSTALL AT A DEPTH OF 4'.

FCEMC (TRANSMISSION) - INSTALL POLES(2) & O/H LINE

AT&T - INSTALL CONDUIT AT A DEPTH OF 10'.

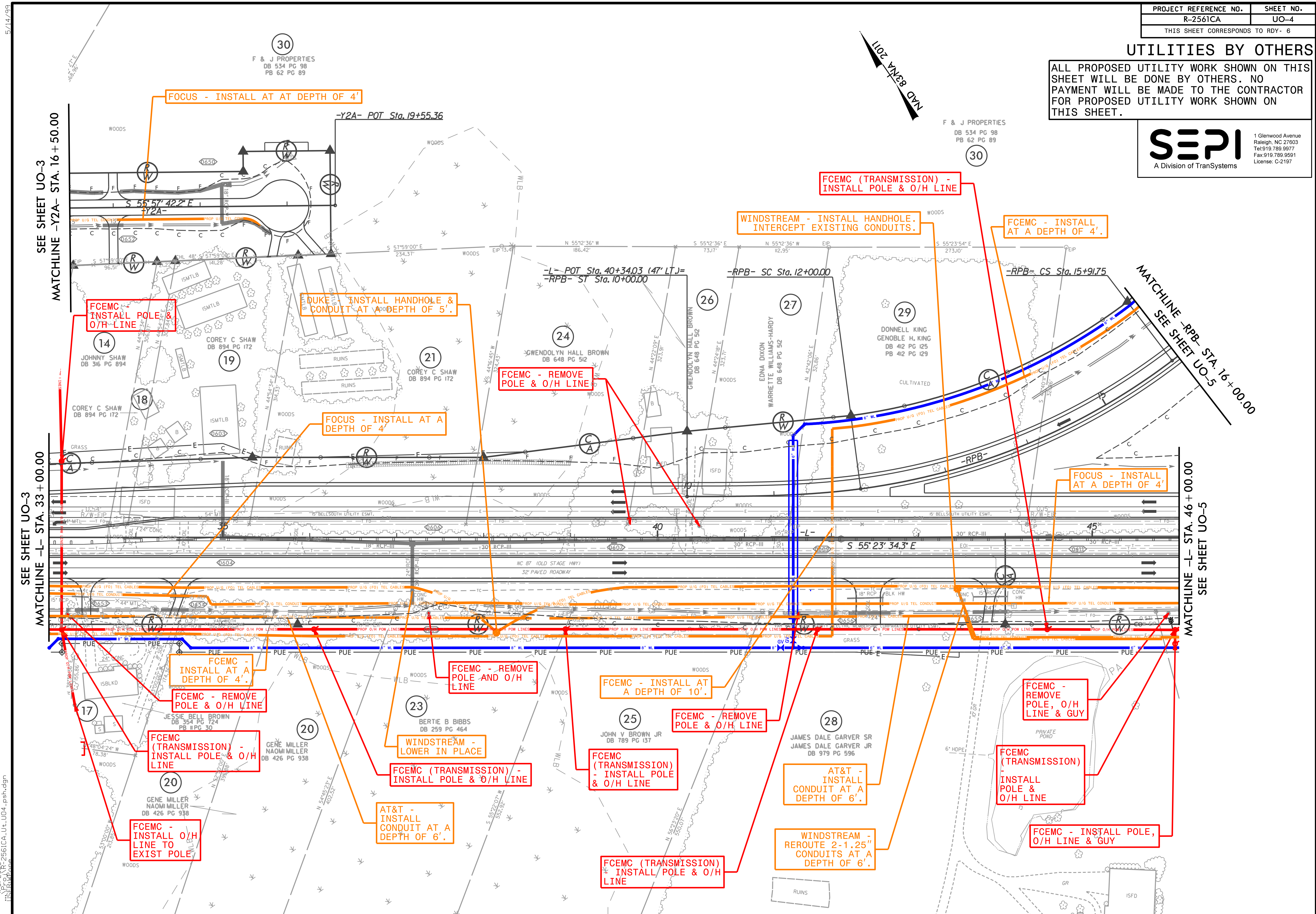
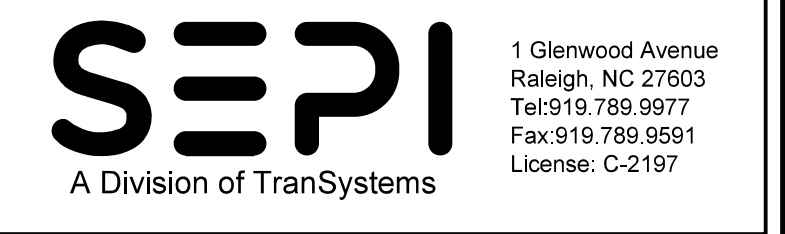
FCEMC - INSTALL O/H LINE TO EXISTING POLE

CHARTER - (2) BORE PITS (3'x4'x4') TO BE REPLACED WITH HANDHOLES

FCEMC - INSTALL POLE & O/H LINE

UTILITIES BY OTHERS

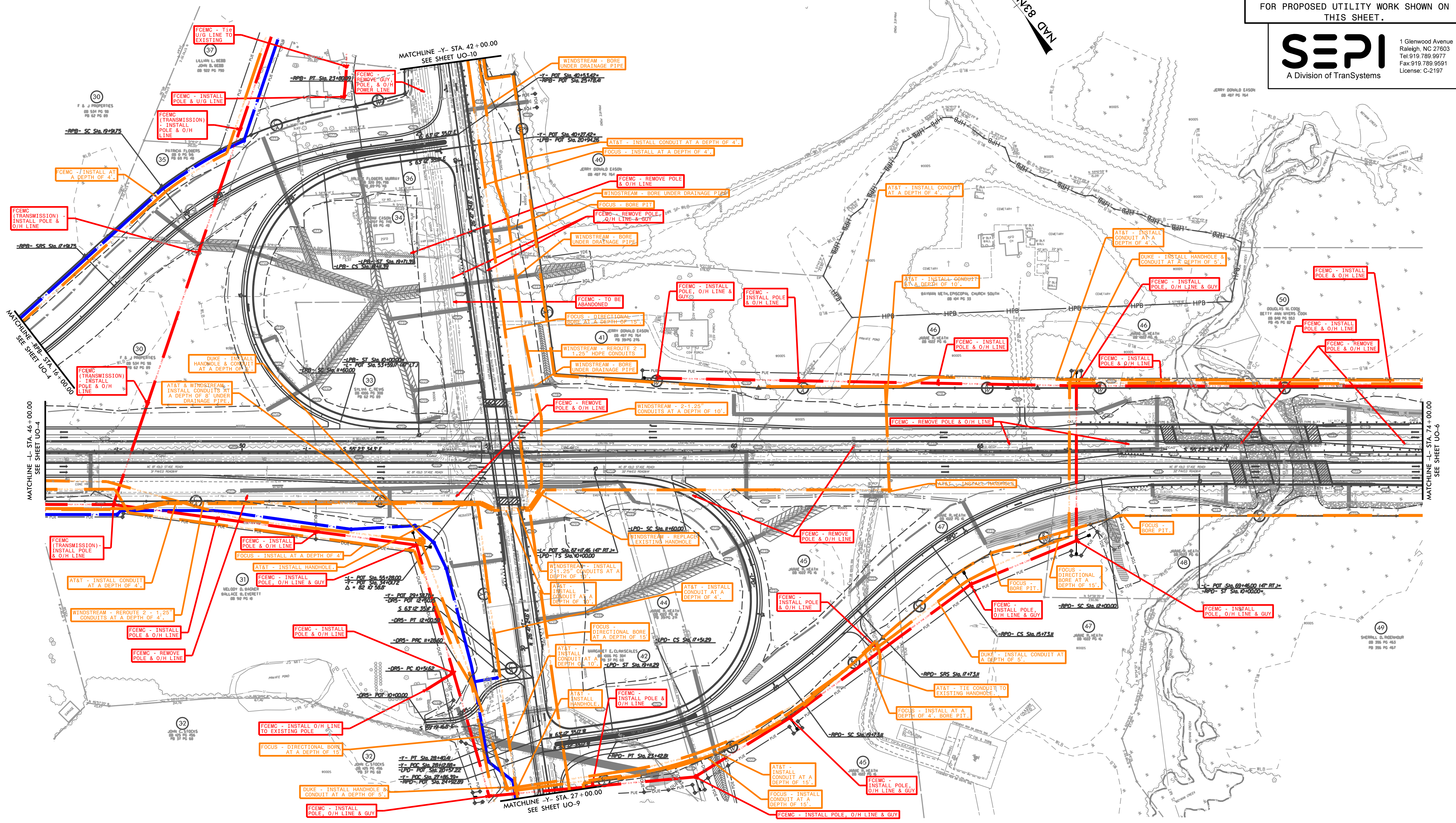
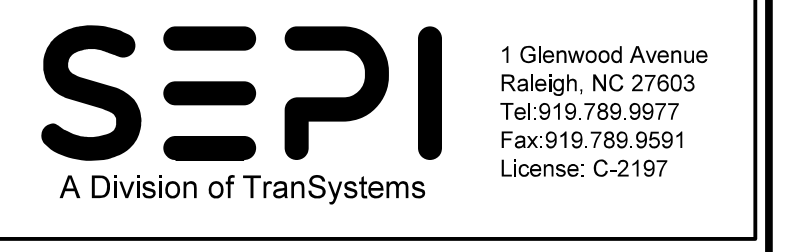
ALL PROPOSED UTILITY WORK SHOWN ON THIS SHEET WILL BE DONE BY OTHERS. NO PAYMENT WILL BE MADE TO THE CONTRACTOR FOR PROPOSED UTILITY WORK SHOWN ON THIS SHEET.



5/14/99
1/6/2003 2:56:1CA_Ut_U04_psh.dgn

UTILITIES BY OTHERS

ALL PROPOSED UTILITY WORK SHOWN ON THIS SHEET WILL BE DONE BY OTHERS. NO PAYMENT WILL BE MADE TO THE CONTRACTOR FOR PROPOSED UTILITY WORK SHOWN ON THIS SHEET.



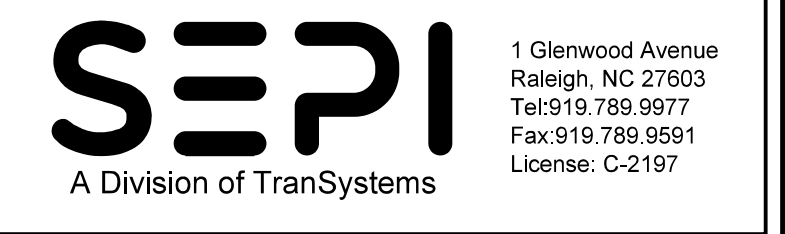
6/2/19
 PROJECT: R-2561CA
 SHEET: UO-5
 DATE: 6/2/19
 DRAWN BY: [unreadable]
 CHECKED BY: [unreadable]
 APPROVED BY: [unreadable]

5/14/99
1/6/2003 2561CA.Ut..U07_psh.dgn

PROJECT REFERENCE NO.	SHEET NO.
R-2561CA	UO-7
THIS SHEET CORRESPONDS TO RDY- 9	

UTILITIES BY OTHERS

ALL PROPOSED UTILITY WORK SHOWN ON THIS SHEET WILL BE DONE BY OTHERS. NO PAYMENT WILL BE MADE TO THE CONTRACTOR FOR PROPOSED UTILITY WORK SHOWN ON THIS SHEET.

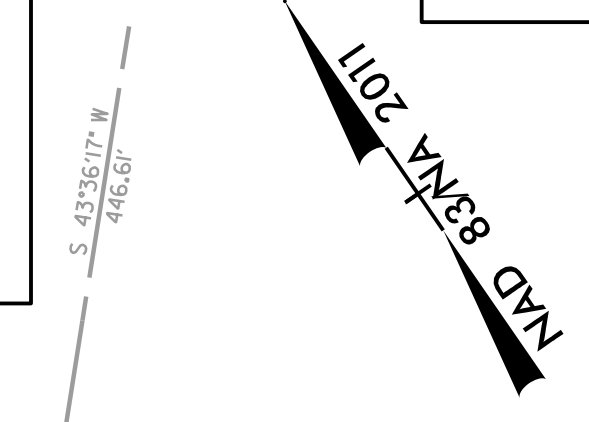
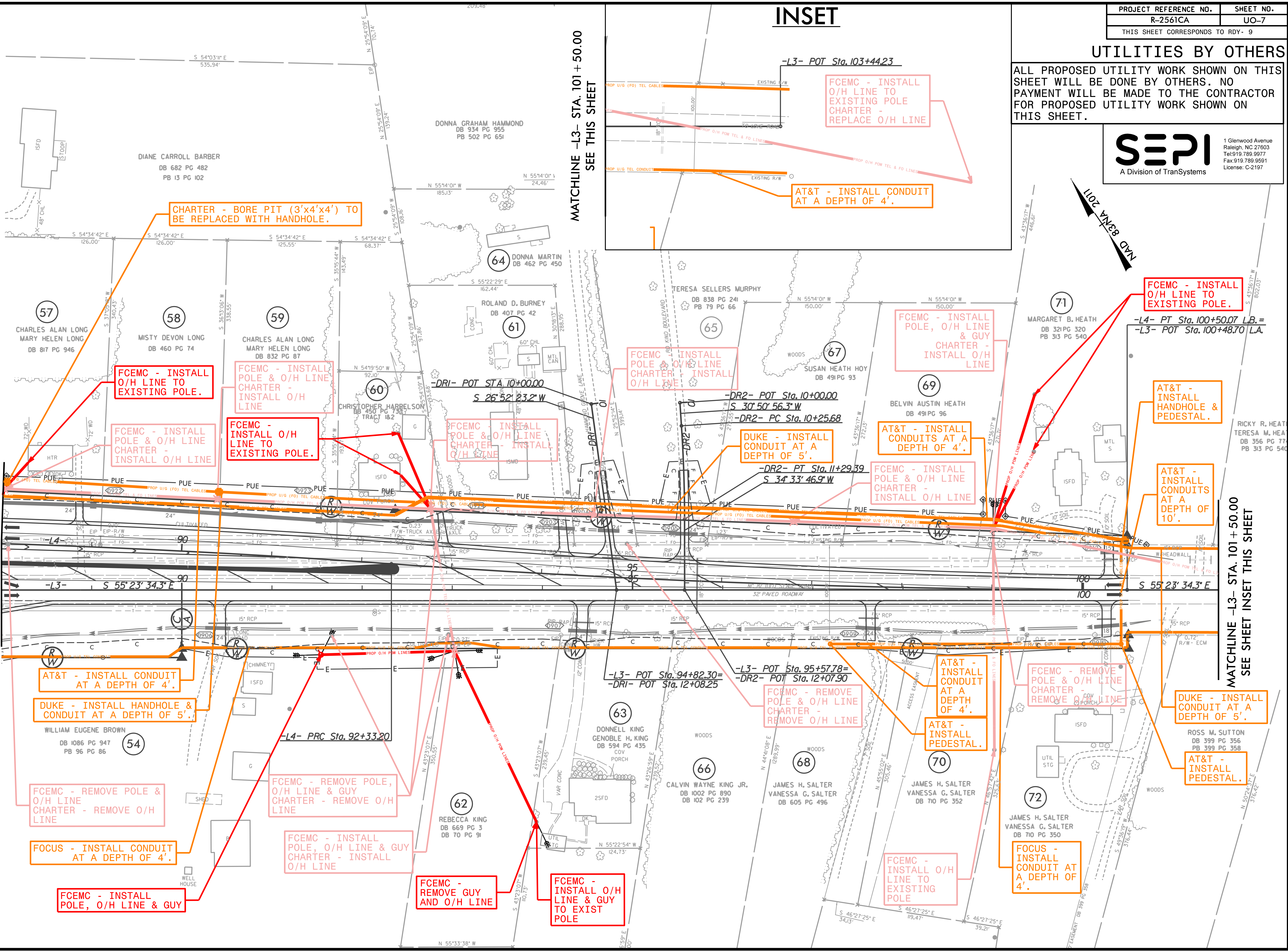
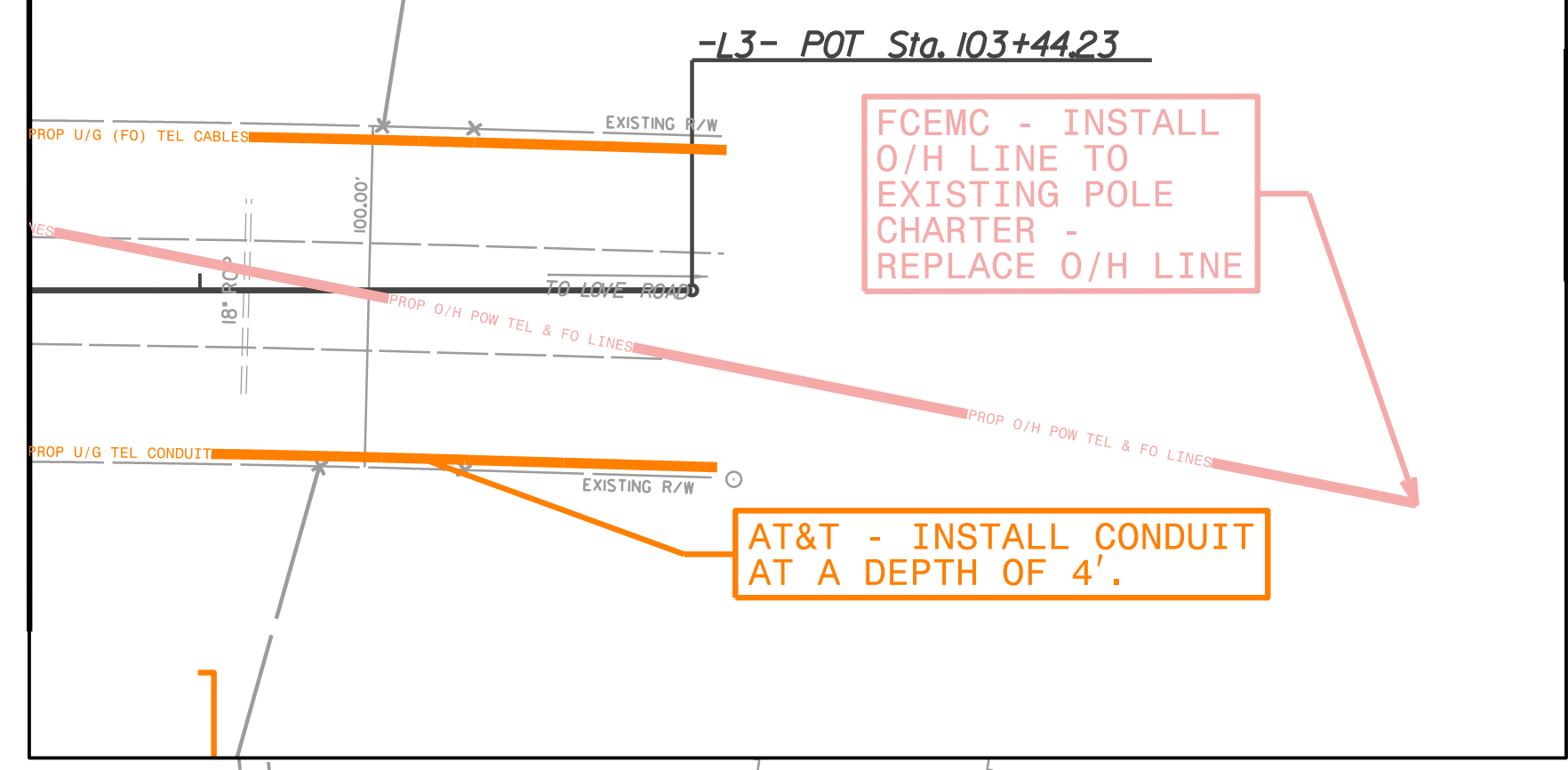


MATCHLINE -L3- STA. 88+00.00
MATCHLINE -L4- STA. 88+00.00
SEE SHEET UO-6

MATCHLINE -L3- STA. 101+50.00
SEE THIS SHEET

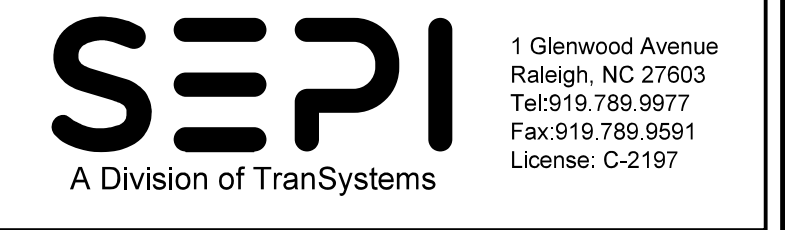
MATCHLINE -L3- STA. 101+50.00
SEE SHEET INSET THIS SHEET

INSET

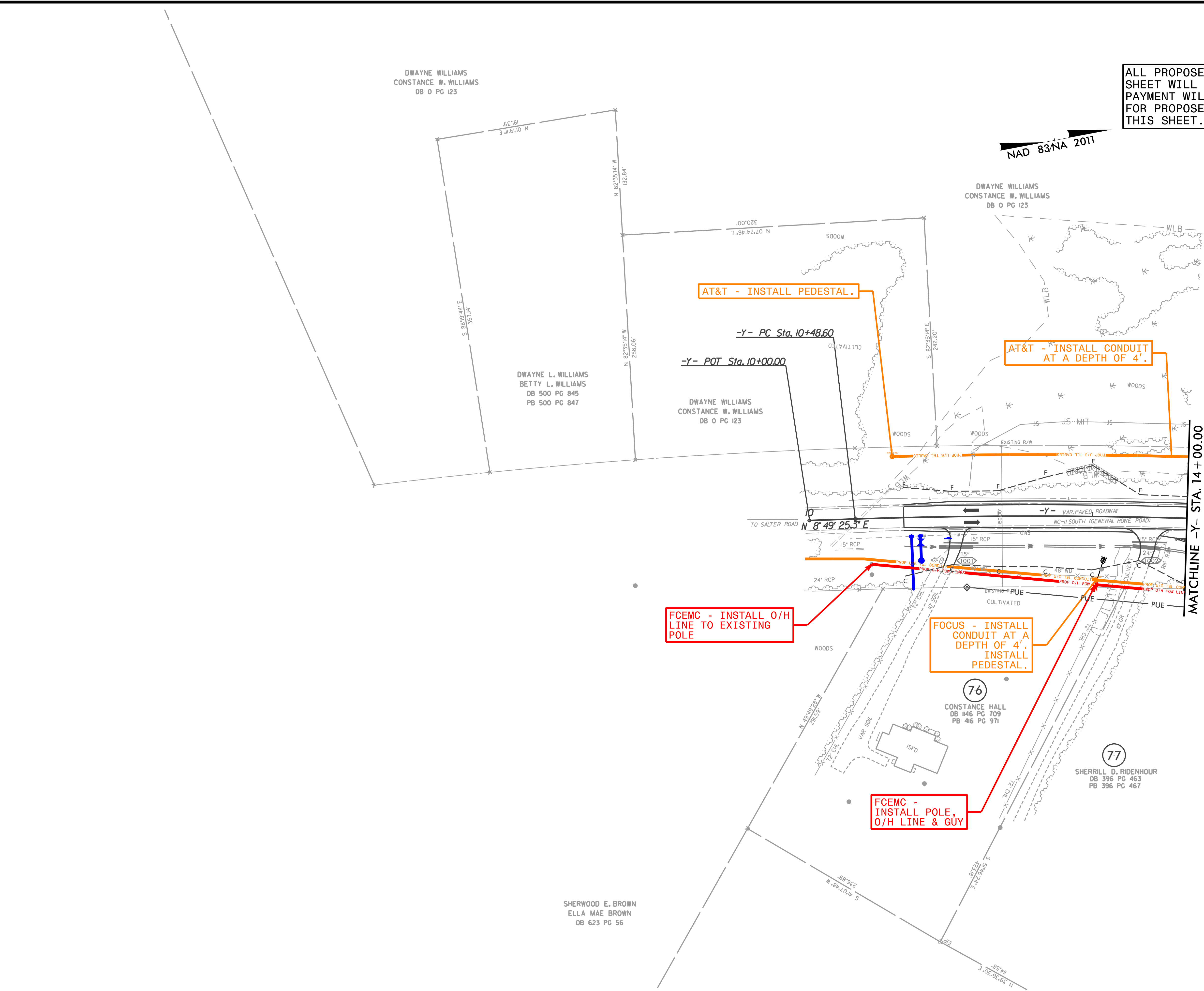


UTILITIES BY OTHERS

ALL PROPOSED UTILITY WORK SHOWN ON THIS SHEET WILL BE DONE BY OTHERS. NO PAYMENT WILL BE MADE TO THE CONTRACTOR FOR PROPOSED UTILITY WORK SHOWN ON THIS SHEET.

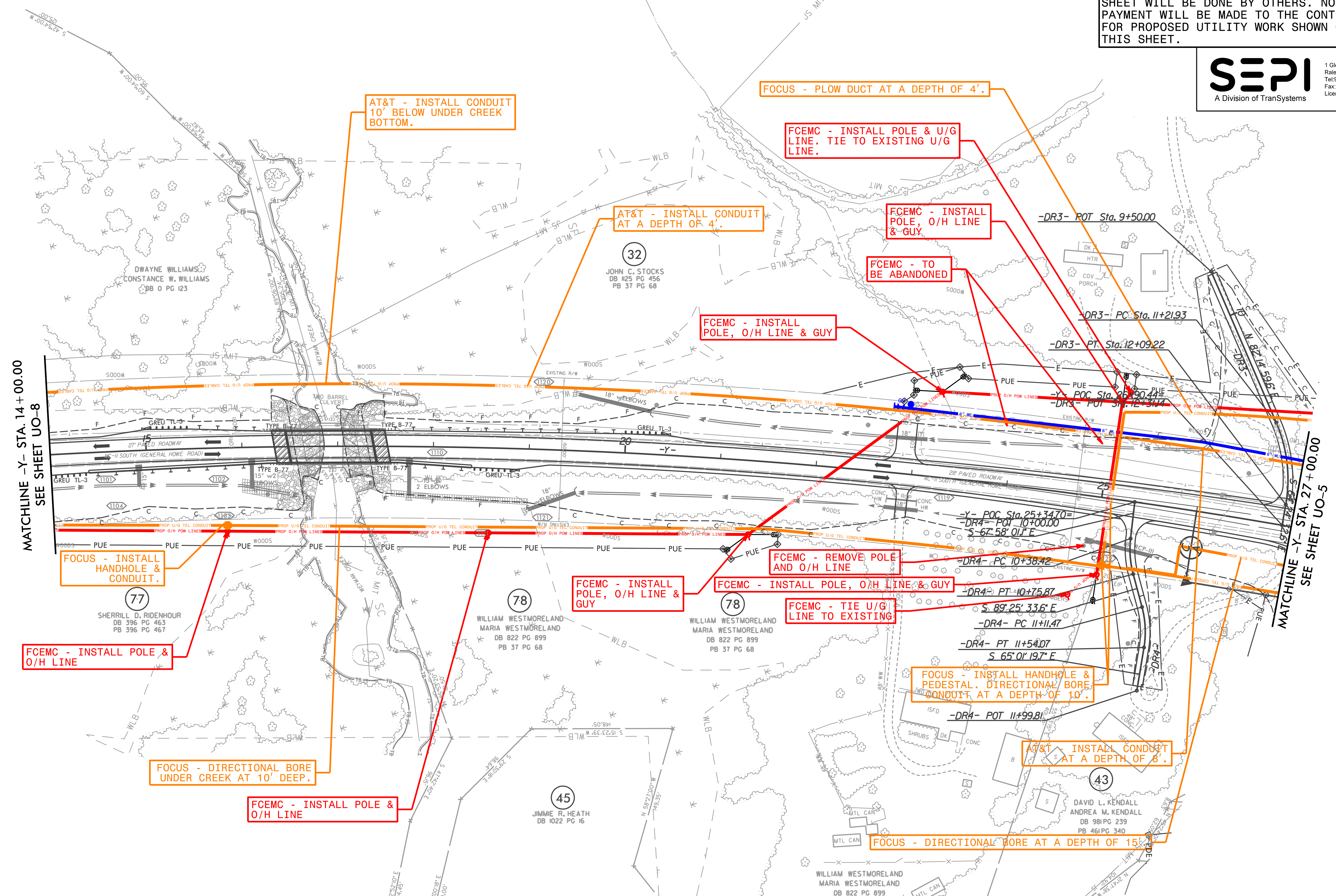
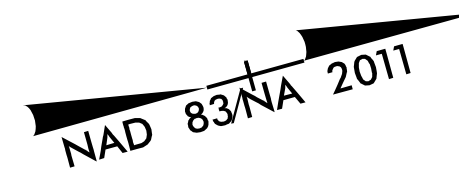
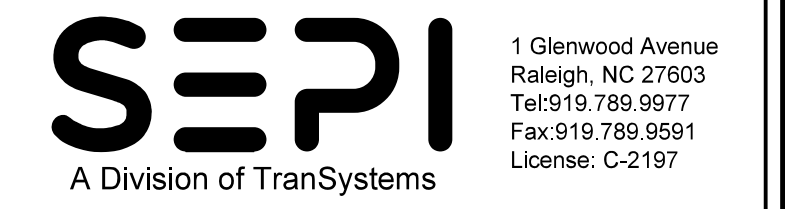


5/14/99
1/6/2003 2561CA_Ut_U08_psh.dgn



UTILITIES BY OTHERS

ALL PROPOSED UTILITY WORK SHOWN ON THIS SHEET WILL BE DONE BY OTHERS. NO PAYMENT WILL BE MADE TO THE CONTRACTOR FOR PROPOSED UTILITY WORK SHOWN ON THIS SHEET.



AT&T - INSTALL CONDUIT 10' BELOW UNDER CREEK BOTTOM.

FOCUS - PLOW DUCT AT A DEPTH OF 4'.

FCEMC - INSTALL POLE & U/G LINE. TIE TO EXISTING U/G LINE.

AT&T - INSTALL CONDUIT AT A DEPTH OF 4'.

FCEMC - INSTALL POLE, O/H LINE & GUY.

FCEMC - TO BE ABANDONED

FCEMC - INSTALL POLE, O/H LINE & GUY

MATCHLINE -Y- STA. 14+00.00
SEE SHEET UO-8

FOCUS - INSTALL HANDHOLE & CONDUIT.

FCEMC - INSTALL POLE & O/H LINE

FCEMC - INSTALL POLE, O/H LINE & GUY

FCEMC - INSTALL POLE, O/H LINE & GUY

FCEMC - REMOVE POLE AND O/H LINE

FCEMC - TIE U/G LINE TO EXISTING

FOCUS - INSTALL HANDHOLE & PEDestal. DIRECTIONAL BORE CONDUIT AT A DEPTH OF 10'.

FOCUS - DIRECTIONAL BORE UNDER CREEK AT 10' DEEP.

FCEMC - INSTALL POLE & O/H LINE

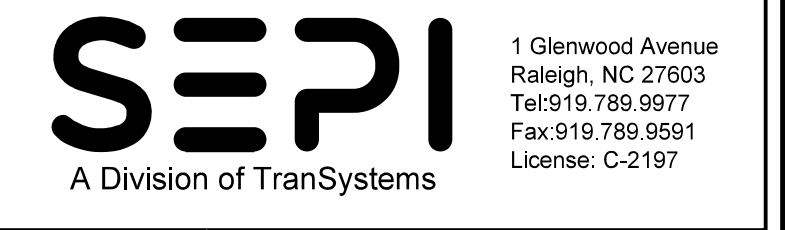
AT&T - INSTALL CONDUIT AT A DEPTH OF 8'.

FOCUS - DIRECTIONAL BORE AT A DEPTH OF 15'

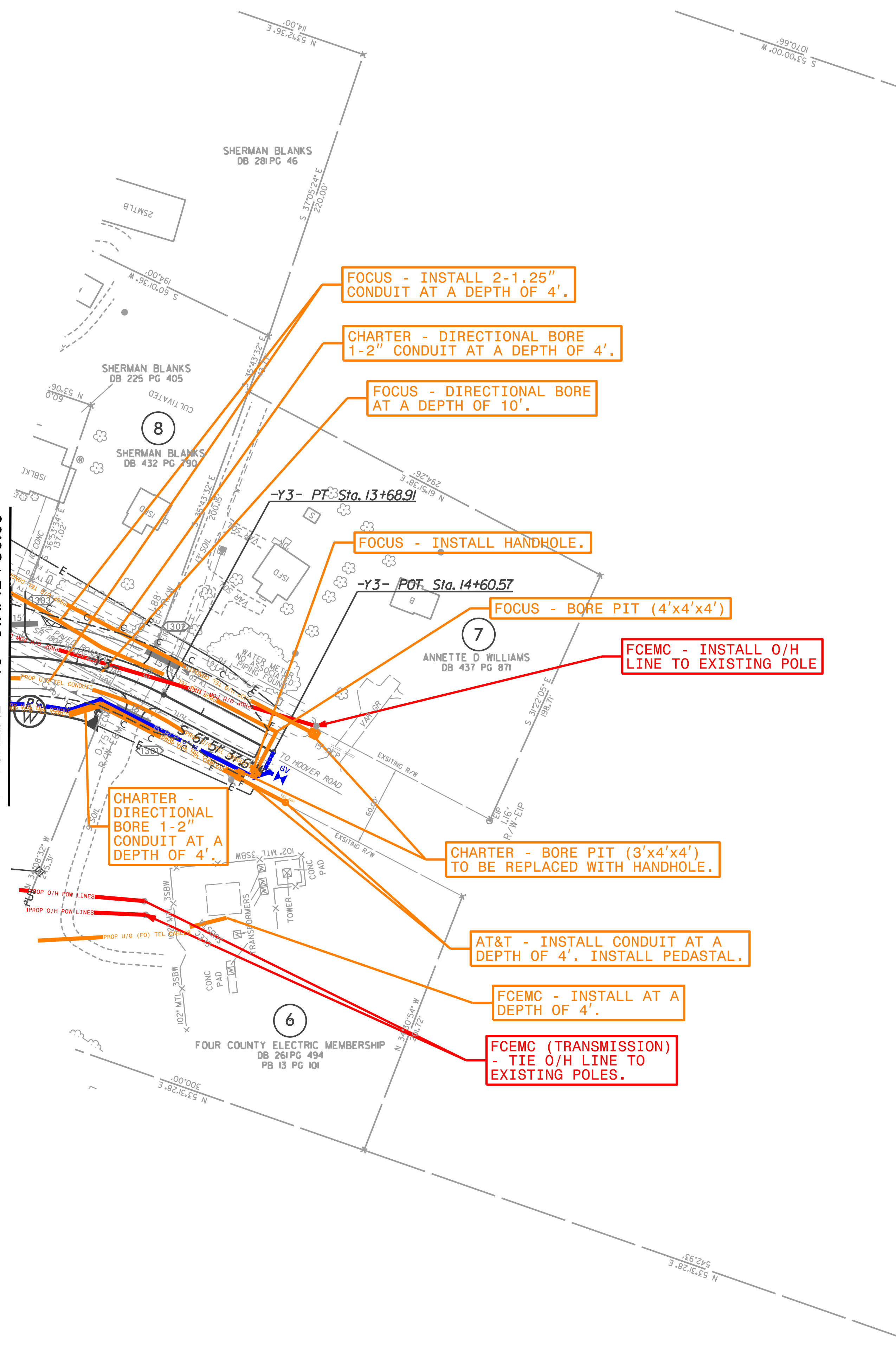
MATCHLINE -Y- STA. 27+00.00
SEE SHEET UO-5

UTILITIES BY OTHERS

ALL PROPOSED UTILITY WORK SHOWN ON THIS SHEET WILL BE DONE BY OTHERS. NO PAYMENT WILL BE MADE TO THE CONTRACTOR FOR PROPOSED UTILITY WORK SHOWN ON THIS SHEET.



SEE SHEET UO-3
MATCHLINE -Y3- STA. 12 + 50.00



FOCUS - INSTALL 2-1.25" CONDUIT AT A DEPTH OF 4'.

CHARTER - DIRECTIONAL BORE 1-2" CONDUIT AT A DEPTH OF 4'.

FOCUS - DIRECTIONAL BORE AT A DEPTH OF 10'.

FOCUS - INSTALL HANDHOLE.

FOCUS - BORE PIT (4'x4'x4')

FCEMC - INSTALL O/H LINE TO EXISTING POLE.

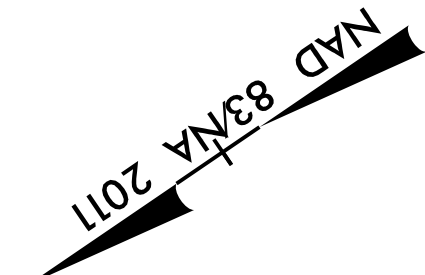
CHARTER - DIRECTIONAL BORE 1-2" CONDUIT AT A DEPTH OF 4'.

CHARTER - BORE PIT (3'x4'x4') TO BE REPLACED WITH HANDHOLE.

AT&T - INSTALL CONDUIT AT A DEPTH OF 4'. INSTALL PEDASTAL.

FCEMC - INSTALL AT A DEPTH OF 4'.

FCEMC (TRANSMISSION) - TIE O/H LINE TO EXISTING POLES.

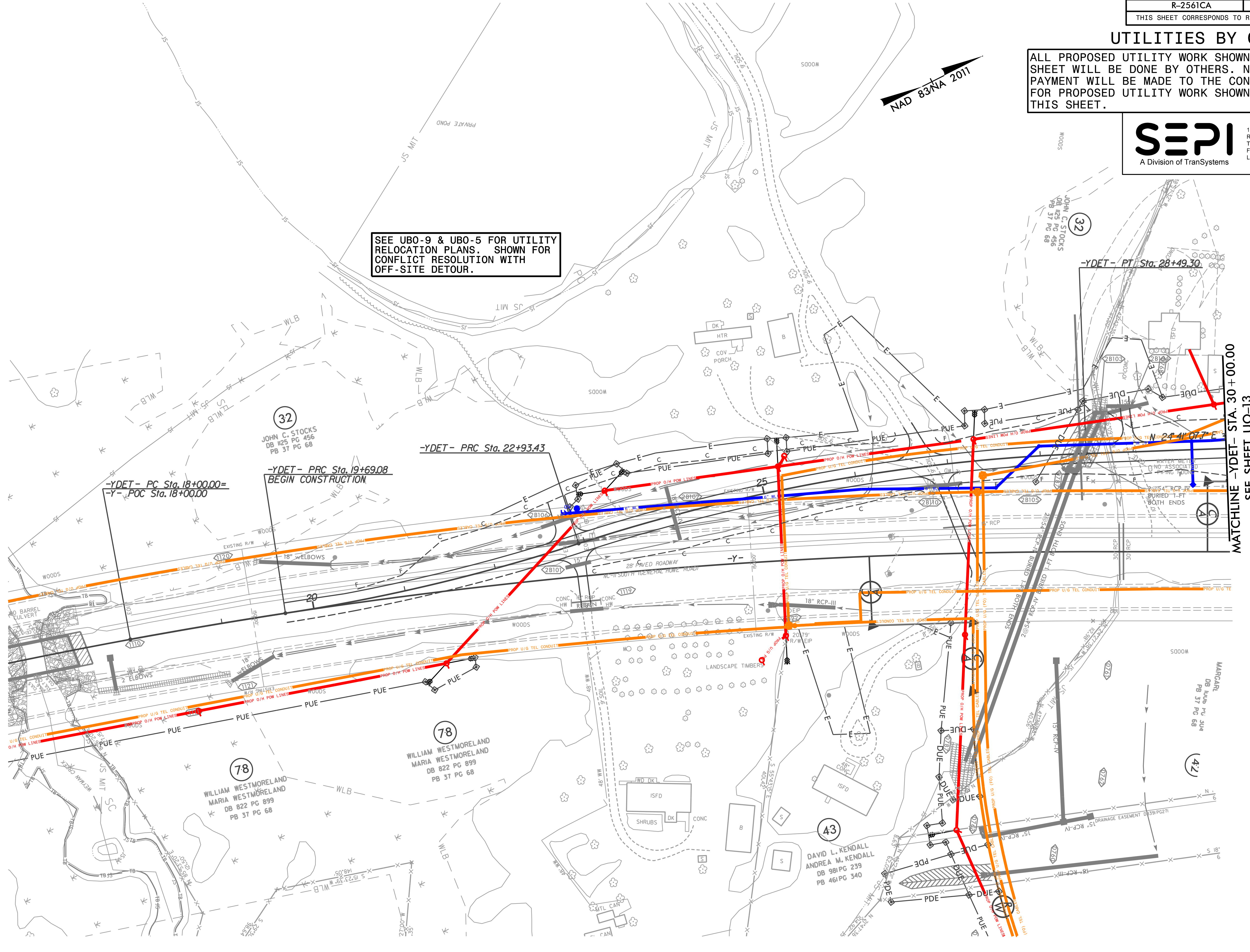


UTILITIES BY OTHERS

ALL PROPOSED UTILITY WORK SHOWN ON THIS SHEET WILL BE DONE BY OTHERS. NO PAYMENT WILL BE MADE TO THE CONTRACTOR FOR PROPOSED UTILITY WORK SHOWN ON THIS SHEET.



SEE UBO-9 & UBO-5 FOR UTILITY RELOCATION PLANS. SHOWN FOR CONFLICT RESOLUTION WITH OFF-SITE DETOUR.



32
JOHN C. STOCKS
DB 125 PG 456
PB 37 PG 68

-YDET- PC Sta. 18+00.00=
-Y- POC Sta. 18+00.00

-YDET- PRC Sta. 19+69.08
BEGIN CONSTRUCTION

-YDET- PRC Sta. 22+93.43

-YDET- PT Sta. 28+49.30

MATCHLINE -YDET- STA. 30+00.00
SEE SHEET UO-13

78
WILLIAM WESTMORELAND
MARIA WESTMORELAND
DB 822 PG 899
PB 37 PG 68

78
WILLIAM WESTMORELAND
MARIA WESTMORELAND
DB 822 PG 899
PB 37 PG 68

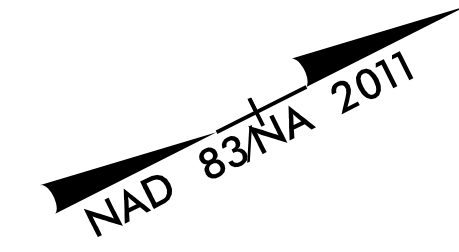
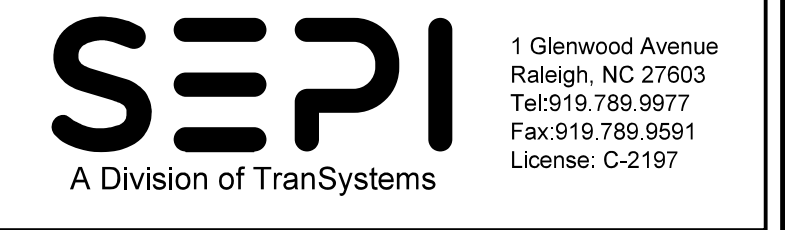
43
DAVID L. KENDALL
ANDREA M. KENDALL
DB 981 PG 239
PB 461 PG 340

421

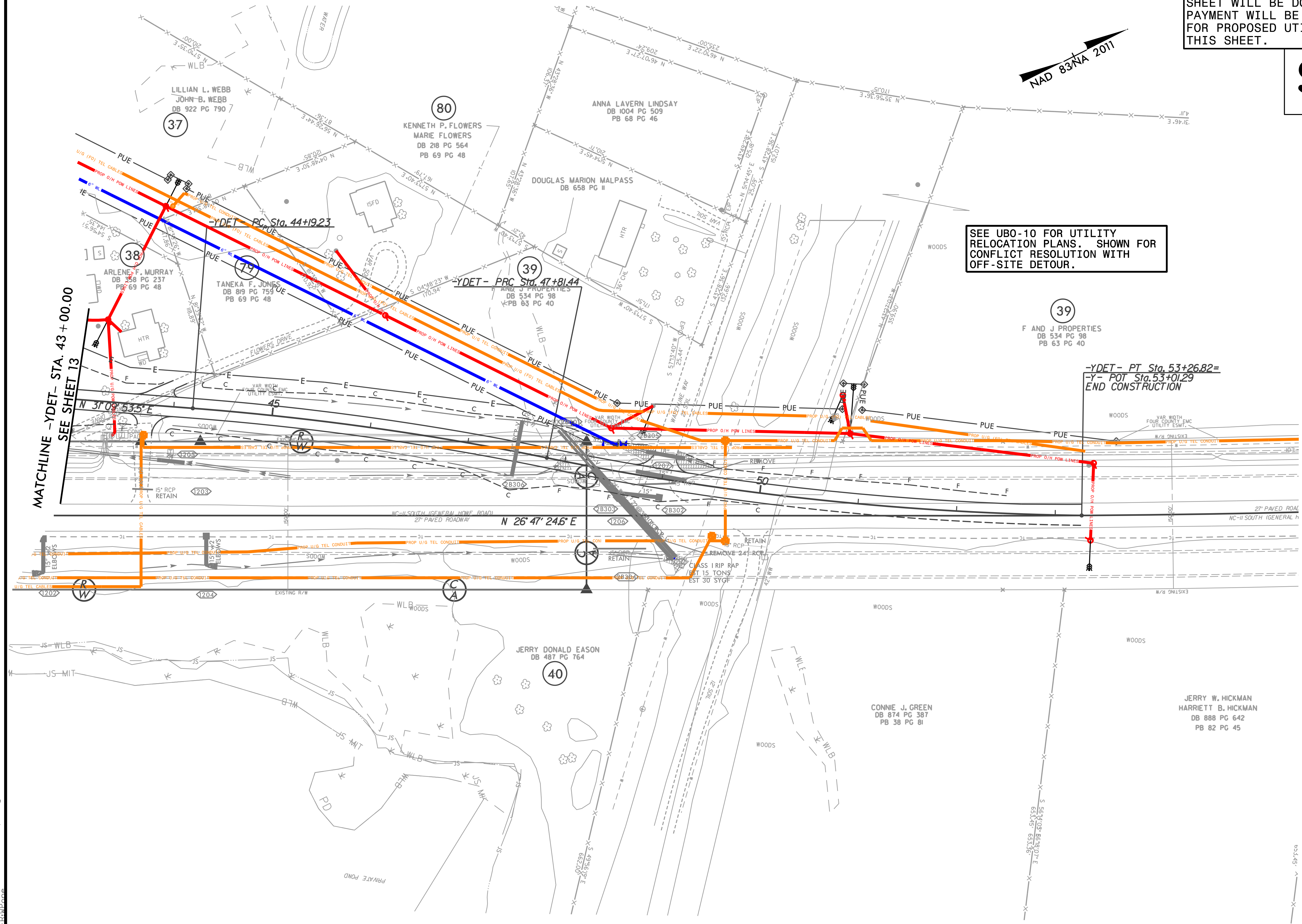
5/14/99
 V:\2007\CA-Ut-U012-2B1.psh.dgn
 11/15/07 10:00 AM

UTILITIES BY OTHERS

ALL PROPOSED UTILITY WORK SHOWN ON THIS SHEET WILL BE DONE BY OTHERS. NO PAYMENT WILL BE MADE TO THE CONTRACTOR FOR PROPOSED UTILITY WORK SHOWN ON THIS SHEET.



SEE UBO-10 FOR UTILITY RELOCATION PLANS. SHOWN FOR CONFLICT RESOLUTION WITH OFF-SITE DETOUR.



5/14/99
U:\2007\CA_Ut_U014_2B3_psh.dgn
R:\2007\CA_Ut_U014_2B3_psh.dgn