

PLAN @ END BENT 1      PLAN @ END BENT 2  
DIMENSIONS SHOWN ARE TYPICAL FOR BOTH APPROACH SLABS

**NOTES**

APPROACH SLAB SHALL NOT BE CONSTRUCTED PRIOR TO COMPLETION OF THE BRIDGE DECK.

FOR BRIDGE APPROACH FILL INCLUDING GEOTEXTILE, 6" Ø DRAINAGE PIPE, AND SELECT MATERIAL, SEE ROADWAY PLANS.

GEOTEXTILE SHALL BE TYPE 1 IN ACCORDANCE WITH THE STANDARD SPECIFICATIONS SECTION 1056.

SELECT MATERIAL BACKFILL (CLASS V OR CLASS VI) SHALL BE IN ACCORDANCE WITH STANDARD SPECIFICATIONS SECTION 1016.

SELECT MATERIAL BACKFILL IS TO BE CONTINUOUS ALONG FILL FACE OF BACKWALL FROM OUTSIDE EDGE TO OUTSIDE EDGE OF APPROACH SLAB.

FOR THE 6" Ø DRAINAGE PIPE OUTLET(S), SEE ROADWAY STANDARD DRAWINGS.

AREA BETWEEN THE WINGWALL AND APPROACH SLAB SHALL BE GRADED TO DRAIN THE WATER AWAY FROM THE FILL FACE OF THE BRIDGE AND SHALL BE PAVED. SEE ROADWAY PLANS.

THE JOINT OPENING AT THE APPROACH SLAB/DECK INTERFACE SHALL BE SAWED NO MORE THAN 12 HOURS AFTER THE APPROACH SLAB IS CAST. THE JOINT SHALL BE CLEANED OF ALL DEBRIS BEFORE THE SEALANT IS APPLIED. THE JOINT SEALER MATERIAL SHALL CONFORM TO THE REQUIREMENTS OF SECTION 1028-3 OF THE STANDARD SPECIFICATIONS.

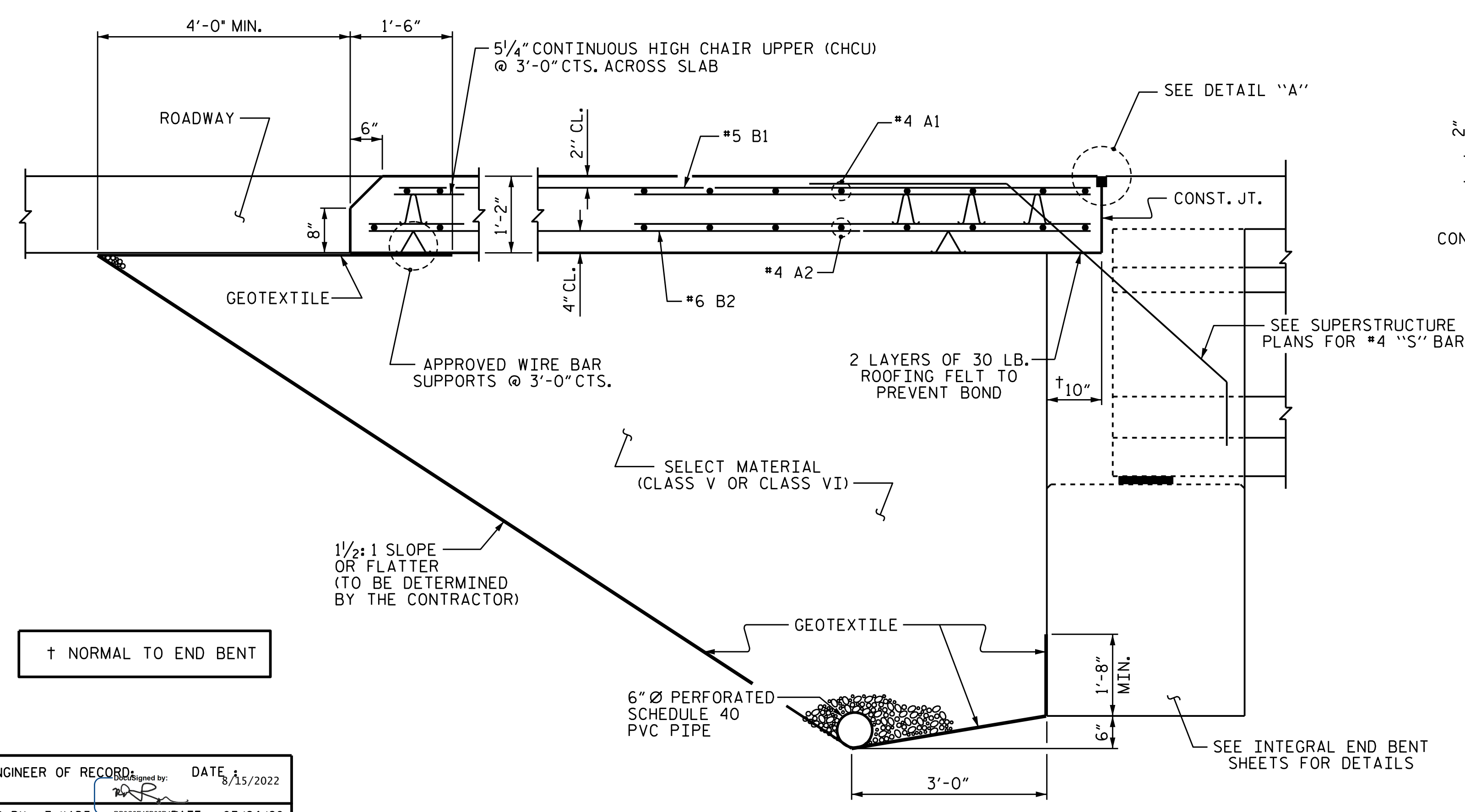
AT THE CONTRACTORS OPTION, "TYPE A - ALTERNATE APPROACH FILL" IN LIEU OF "TYPE I - STANDARD APPROACH FILL" MAY BE CONSTRUCTED AT NO ADDITIONAL COST TO THE DEPARTMENT. SEE SHEET 2 OF 2 FOR DETAILS AND NOTES.

**BILL OF MATERIAL**  
FOR ONE APPROACH SLAB (2 REQ'D)

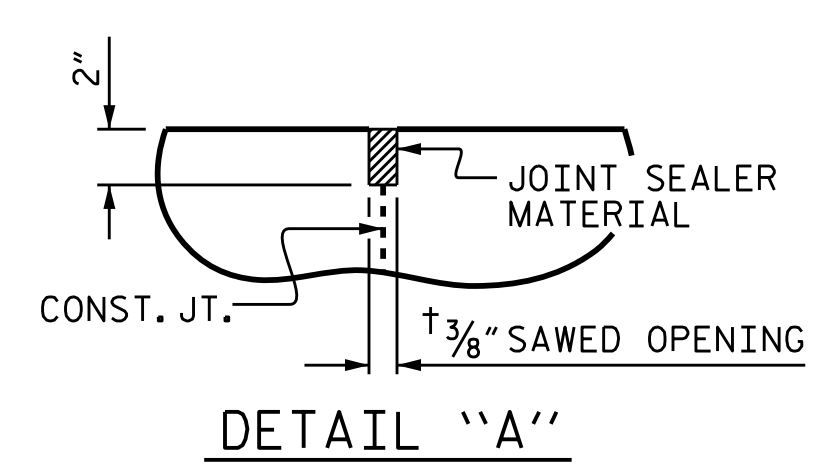
| BAR                              | NO. | SIZE | TYPE | LENGTH  | WEIGHT |
|----------------------------------|-----|------|------|---------|--------|
| * A1                             | 52  | #4   | STR  | 25'-10" | 893    |
| A2                               | 52  | #4   | STR  | 25'-8"  | 892    |
| * B1                             | 97  | #5   | STR  | 24'-0"  | 2428   |
| B2                               | 97  | #6   | STR  | 24'-8"  | 3594   |
| REINFORCING STEEL                |     |      |      | 4486    | LBS.   |
| * EPOXY COATED REINFORCING STEEL |     |      |      | 3325    | LBS.   |
| CLASS AA CONCRETE                |     |      |      | 52.3    | C. Y.  |

**SPLICE LENGTHS**

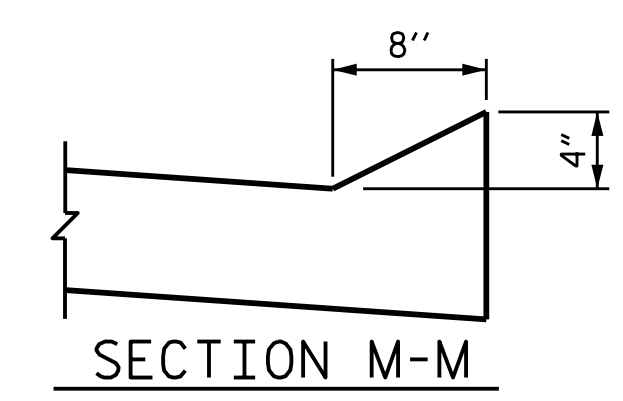
| BAR SIZE | EPOXY COATED | UNCOATED |
|----------|--------------|----------|
| #4       | 1'-11"       | 1'-7"    |
| #5       | 2'-5"        | 2'-0"    |
| #6       | 3'-7"        | 2'-5"    |



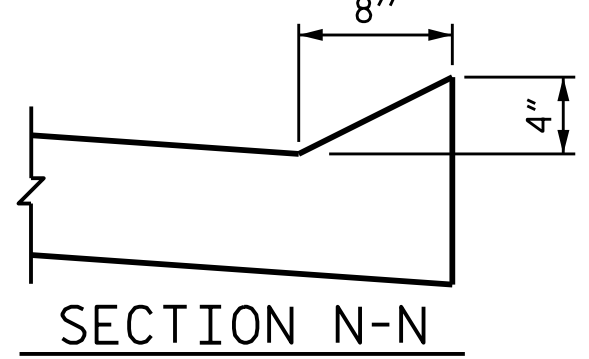
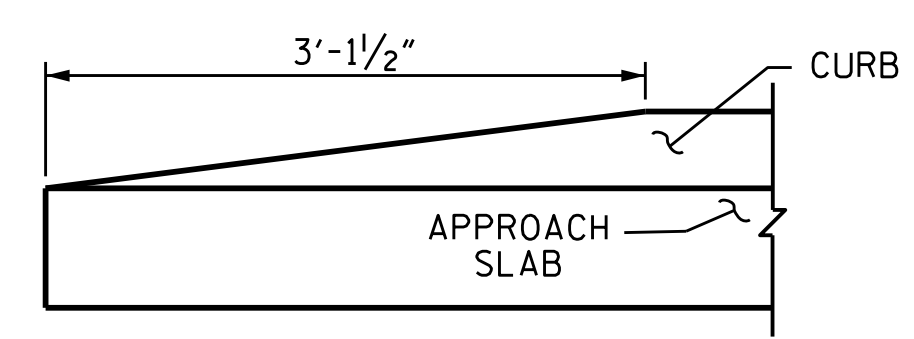
SECTION THRU SLAB  
(TYPE I - STANDARD APPROACH FILL)



DETAIL "A"



SECTION M-M



SECTION N-N

END OF CURB WITHOUT SHOULDER BERM GUTTER

PROJECT NO. R-2561CA  
COLUMBUS COUNTY  
STATION: 71+06.00 -L-

SHEET 1 OF 2  
STATE OF NORTH CAROLINA  
DEPARTMENT OF TRANSPORTATION  
RALEIGH  
STANDARD  
BRIDGE APPROACH SLAB  
FOR INTEGRAL ABUTMENT  
WITH FLEXIBLE PAVEMENT  
RIGHT LANE

DocuSigned by:  
[Signature]  
DB3C8E45B06D499  
8/15/2022  
NORTH CAROLINA PROFESSIONAL ENGINEER SEAL 14114 ROBERT C. LARSON

DESIGN ENGINEER OF RECORD: [Signature] DATE: 8/15/2022

ASSEMBLED BY: Z. KADI DATE: 07/24/20  
CHECKED BY: R.C. LARSON DATE: 07/28/20

DRAWN BY: TLA 10/05 REV. 6/13 MAA/GM  
CHECKED BY: GM 5/06 REV. 12/17 MAA/THC  
REV. 06/19 BNB/THC

**DOCUMENT NOT CONSIDERED FINAL  
UNLESS ALL SIGNATURES COMPLETED**

ENGINEERS & PLANNERS & SCIENTISTS & CONSTRUCTION MANAGERS LICENSE NUMBER: C-0764  
**KCI Associates**  
of North Carolina, P.A.  
4505 Falls of Neuse Road, Suite 400, Raleigh, NC 27609-5270 Phone: 919-783-9241

| REVISIONS |     |       |     |     |       | SHEET NO.    |  |
|-----------|-----|-------|-----|-----|-------|--------------|--|
| NO.       | BY: | DATE: | NO. | BY: | DATE: | S4-28        |  |
| 1         |     |       | 3   |     |       | TOTAL SHEETS |  |
| 2         |     |       | 4   |     |       | 29           |  |