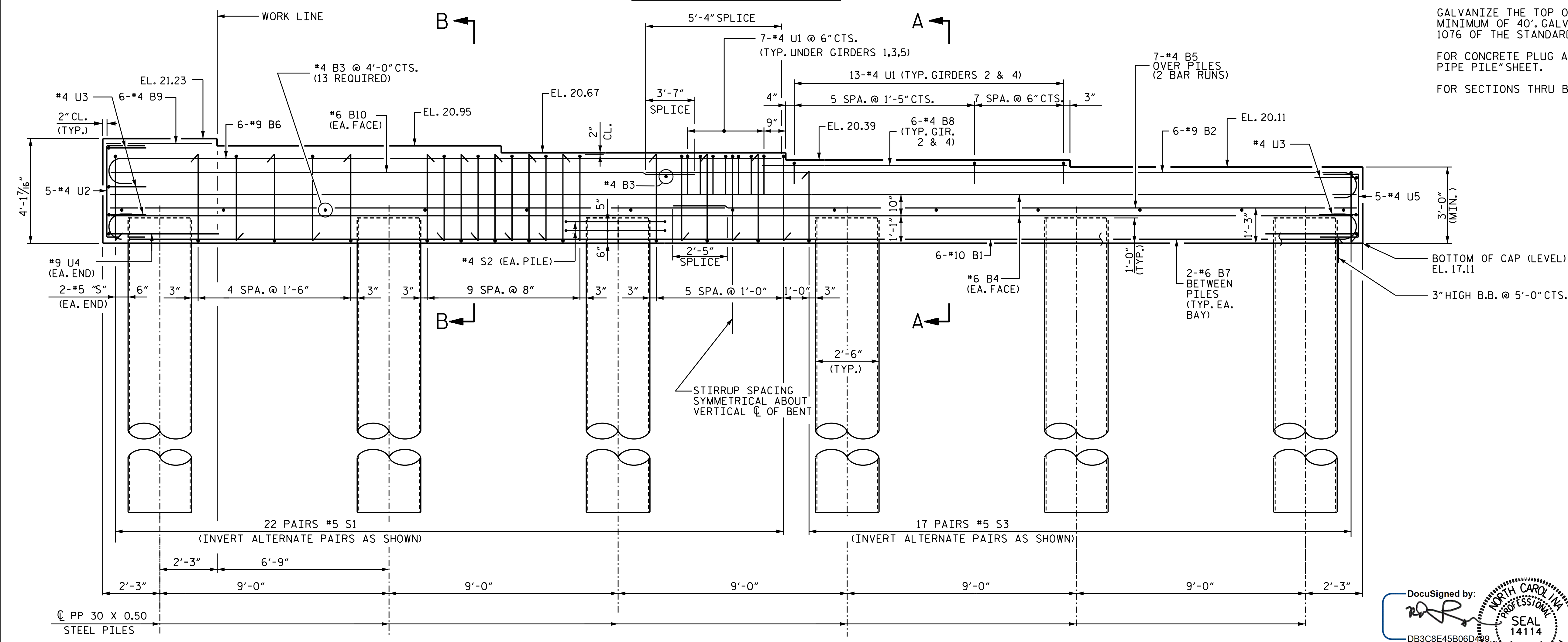


PLAN OF CAP



ELEVATION

NOTES

- STIRRUPS IN CAP MAY BE SHIFTED AS NECESSARY TO CLEAR ANCHOR BOLTS.
- GALVANIZE THE TOP OF EACH INTERIOR BENT PILE A MINIMUM OF 40'. GALVANIZE IN ACCORDANCE WITH SECTION 1076 OF THE STANDARD SPECIFICATIONS.
- FOR CONCRETE PLUG AND REINFORCING IN PILES SEE "30" STEEL PIPE PILE" SHEET.
- FOR SECTIONS THRU BENT CAP SEE SHEET 2 OF 2

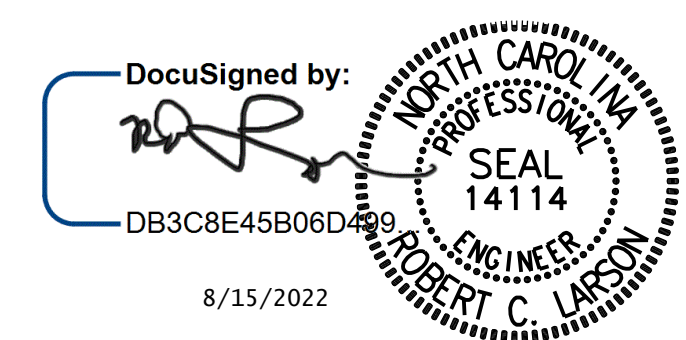
PROJECT NO. R-256ICA
COLUMBUS COUNTY
 STATION: 71+06.00 -L-

SHEET 1 OF 2

STATE OF NORTH CAROLINA
 DEPARTMENT OF TRANSPORTATION
 RALEIGH

SUBSTRUCTURE BENT 1

RIGHT LANE



DESIGN ENGINEER OF RECORD:	DATE:
A. K. ALLANKI	8/15/2022
DRAWN BY:	DATE:
R. C. LARSON	07/14/20
CHECKED BY:	DATE:
R. C. LARSON	07/17/20

**DOCUMENT NOT CONSIDERED FINAL
 UNLESS ALL SIGNATURES COMPLETED**



REVISIONS		SHEET NO.	
NO.	DATE:	NO.	DATE:
1		3	
2		4	

TOTAL SHEETS: 29

\$FILEL\$ \$DATES\$ \$TIME\$ \$USERS\$ \$PENTBL\$ \$PLTDVRS\$ \$KCI PROJECT NO. 241704391.04