

NOTES

AT ALL FIXED POINTS OF SUPPORT, NUTS FOR ANCHOR BOLTS ARE TO BE TIGHTENED FINGER TIGHT AND THEN BACKED OFF 1/2 TURN. THE THREAD OF THE NUT AND BOLT SHALL THEN BE BURRED WITH A SHARP POINTED TOOL.

STEEL SOLE PLATES, ANCHOR BOLTS, NUTS, AND WASHERS SHALL BE GALVANIZED IN ACCORDANCE WITH THE STANDARD SPECIFICATIONS.

PRIOR TO WELDING, GRIND THE GALVANIZED SURFACE OF THE PORTION OF THE EMBEDDED PLATE AND SOLE PLATE THAT ARE TO BE WELDED. AFTER WELDING, DAMAGED GALVANIZED SURFACES SHALL BE REPAIRED IN ACCORDANCE WITH THE STANDARD SPECIFICATIONS.

WHEN WELDING THE SOLE PLATE TO THE EMBEDDED PLATE IN THE GIRDER, USE TEMPERATURE INDICATING WAX PENS, OR OTHER SUITABLE MEANS, TO ENSURE THAT THE TEMPERATURE OF THE SOLE PLATE DOES NOT EXCEED 300°F. TEMPERATURES ABOVE THIS MAY DAMAGE THE ELASTOMER.

SOLE PLATE "P", BOLTS, NUTS AND WASHERS SHALL BE INCLUDED IN THE PAY ITEM FOR PRESTRESSED CONCRETE GIRDERS.

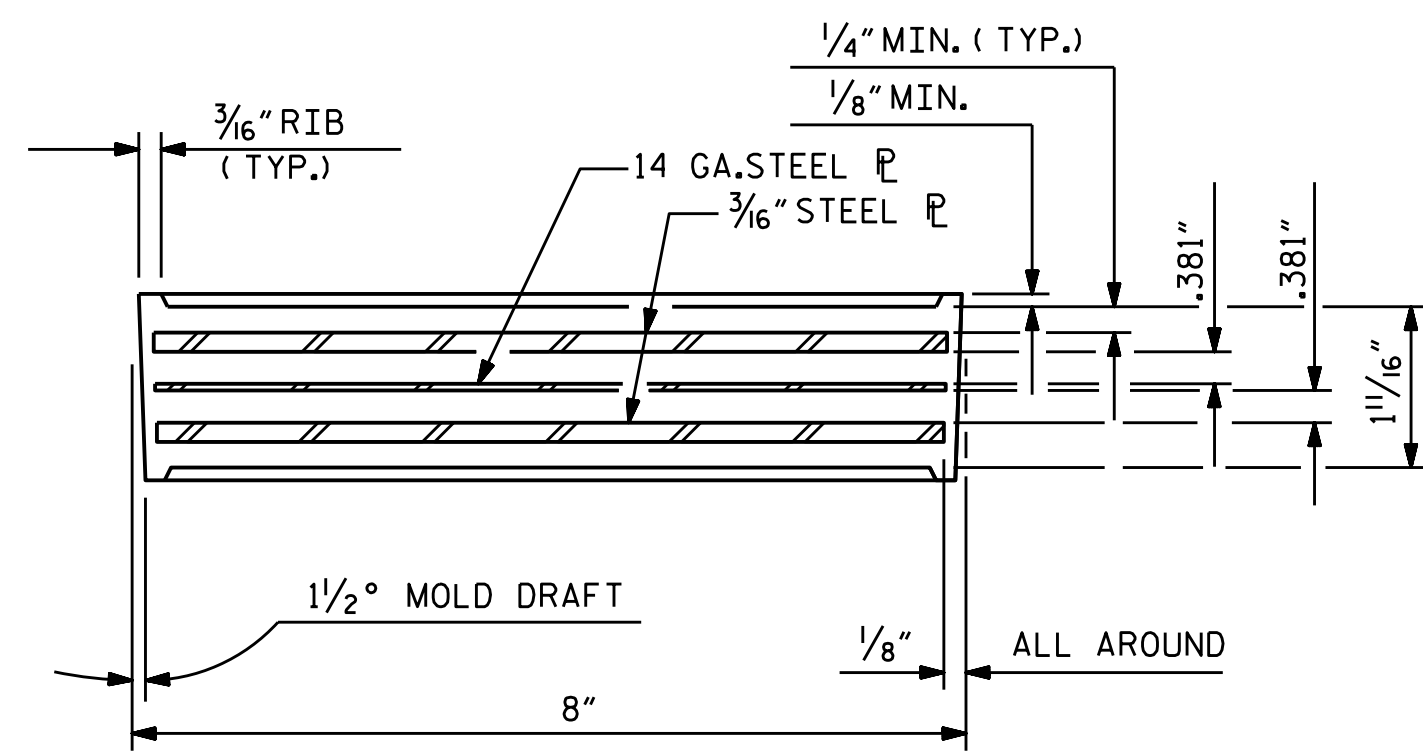
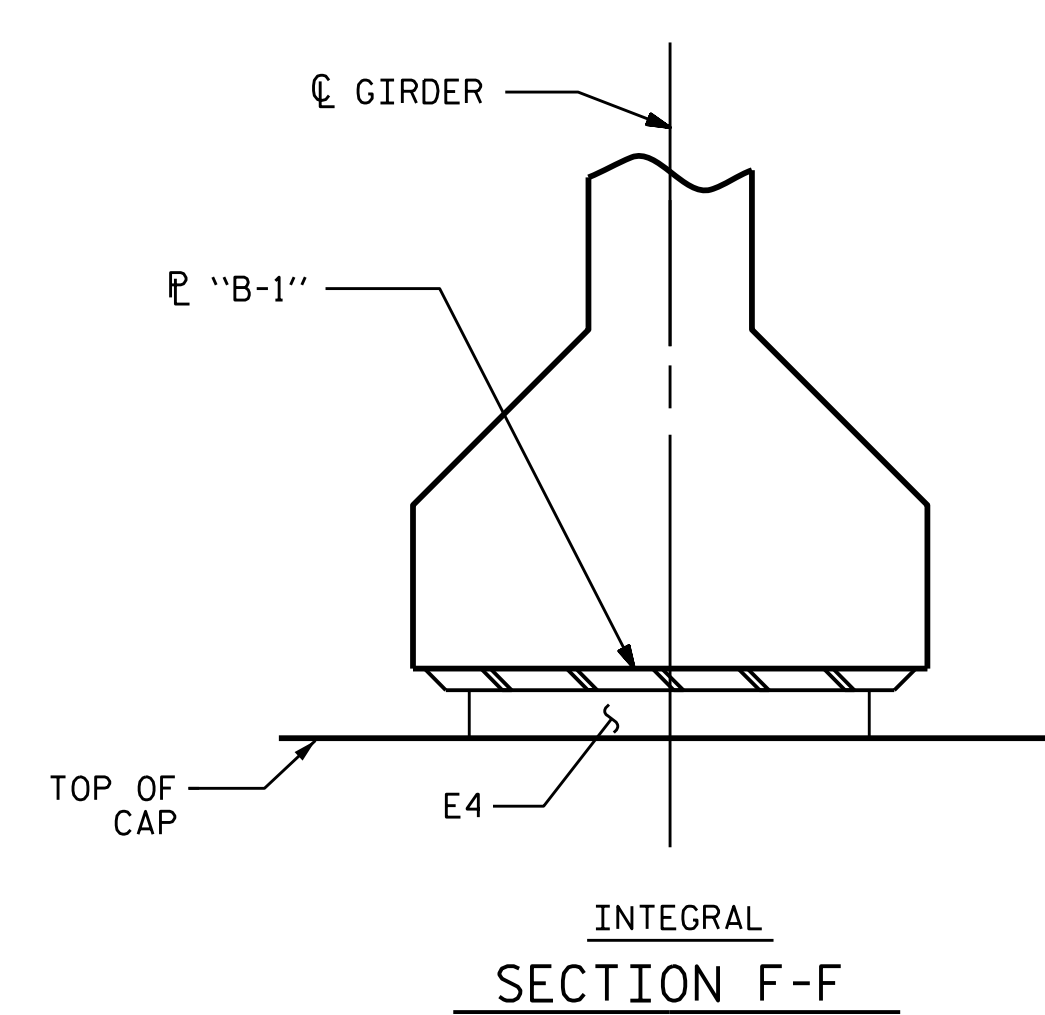
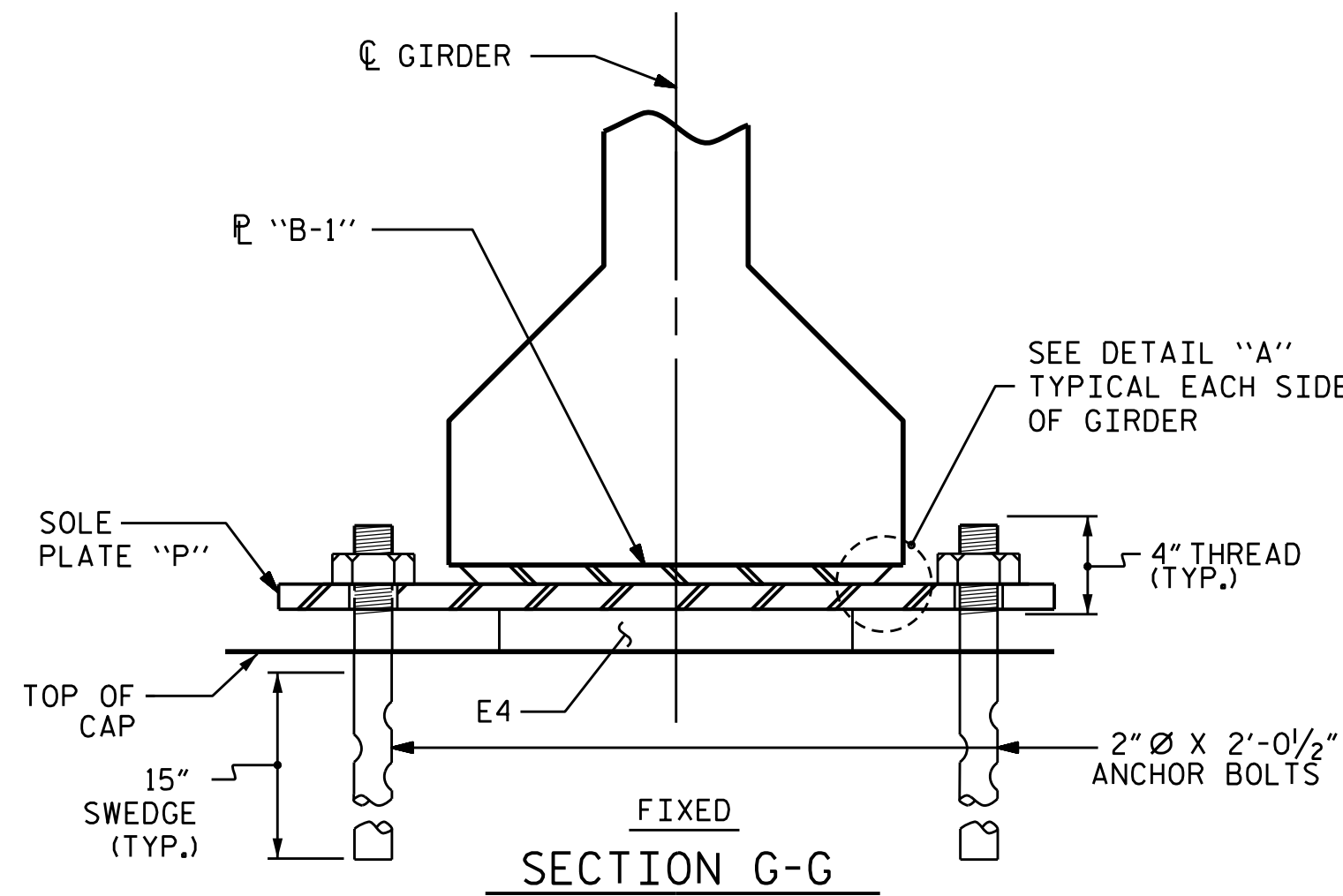
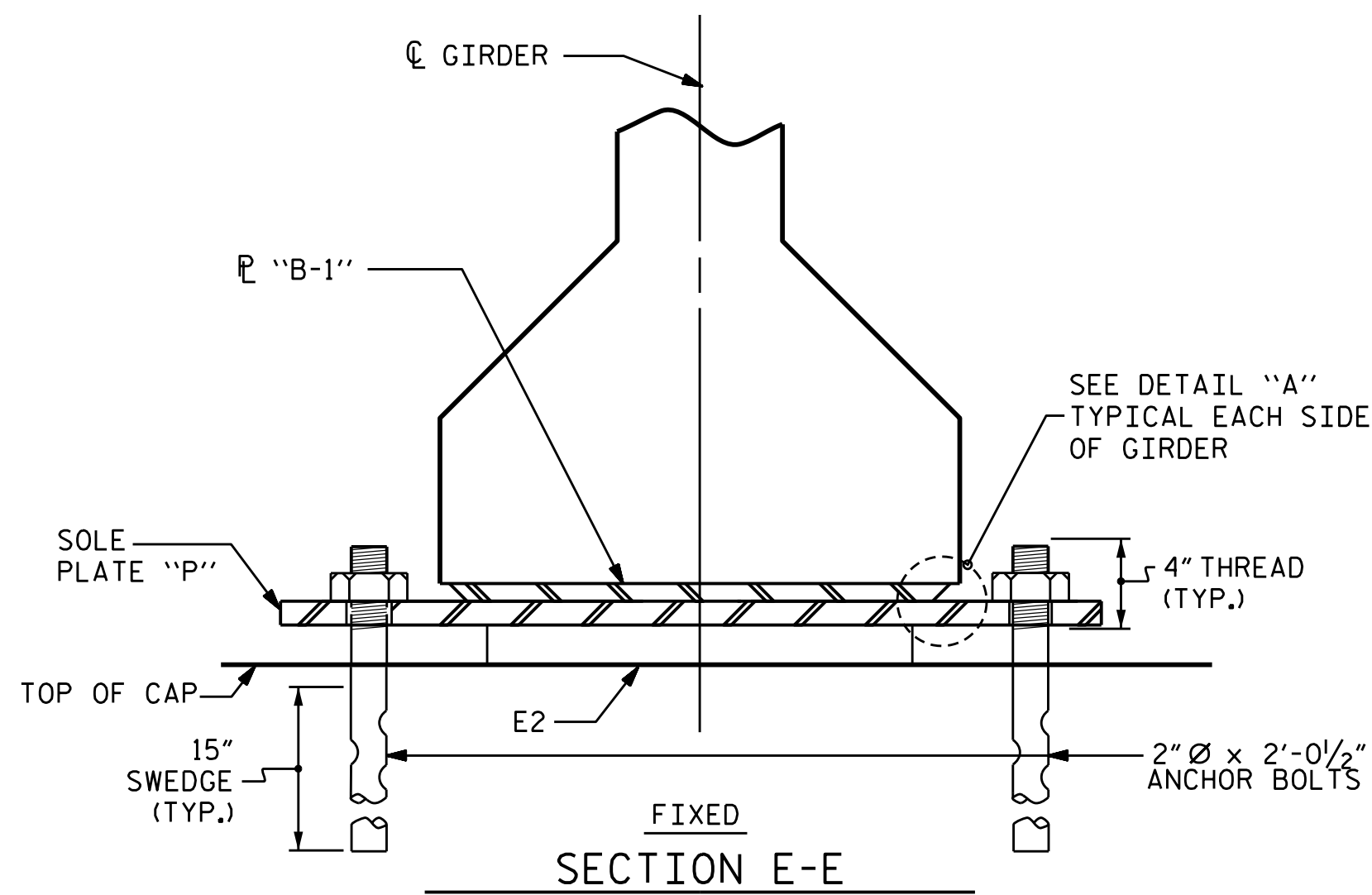
ANCHOR BOLTS SHALL MEET THE REQUIREMENTS OF ASTM A449. NUTS SHALL MEET THE REQUIREMENTS OF AASHTO M291-DH OR AASHTO M292-2H. WASHERS SHALL MEET THE REQUIREMENTS OF AASHTO M293. NO SHOP DRAWINGS ARE REQUIRED FOR ANCHOR BOLTS, NUTS AND WASHERS. SHOP INSPECTION IS REQUIRED.

ALL SURFACES OF BEARING PLATES SHALL BE SMOOTH AND STRAIGHT.

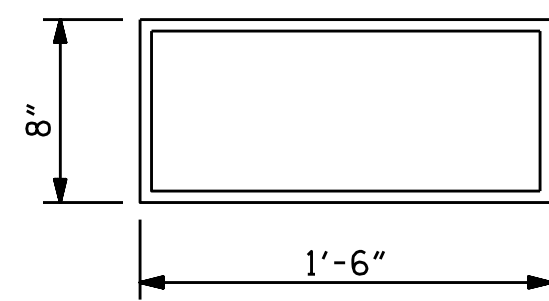
THE ELASTOMER IN THE STEEL REINFORCED BEARINGS SHALL HAVE A SHEAR MODULUS OF 0.160 KSI, IN ACCORDANCE WITH AASHTO M251.

FOR STEEL REINFORCED ELASTOMERIC BEARINGS, SEE SPECIAL PROVISIONS.

ALL SOLE PLATES SHALL BE AASHTO M270 GRADE 36.



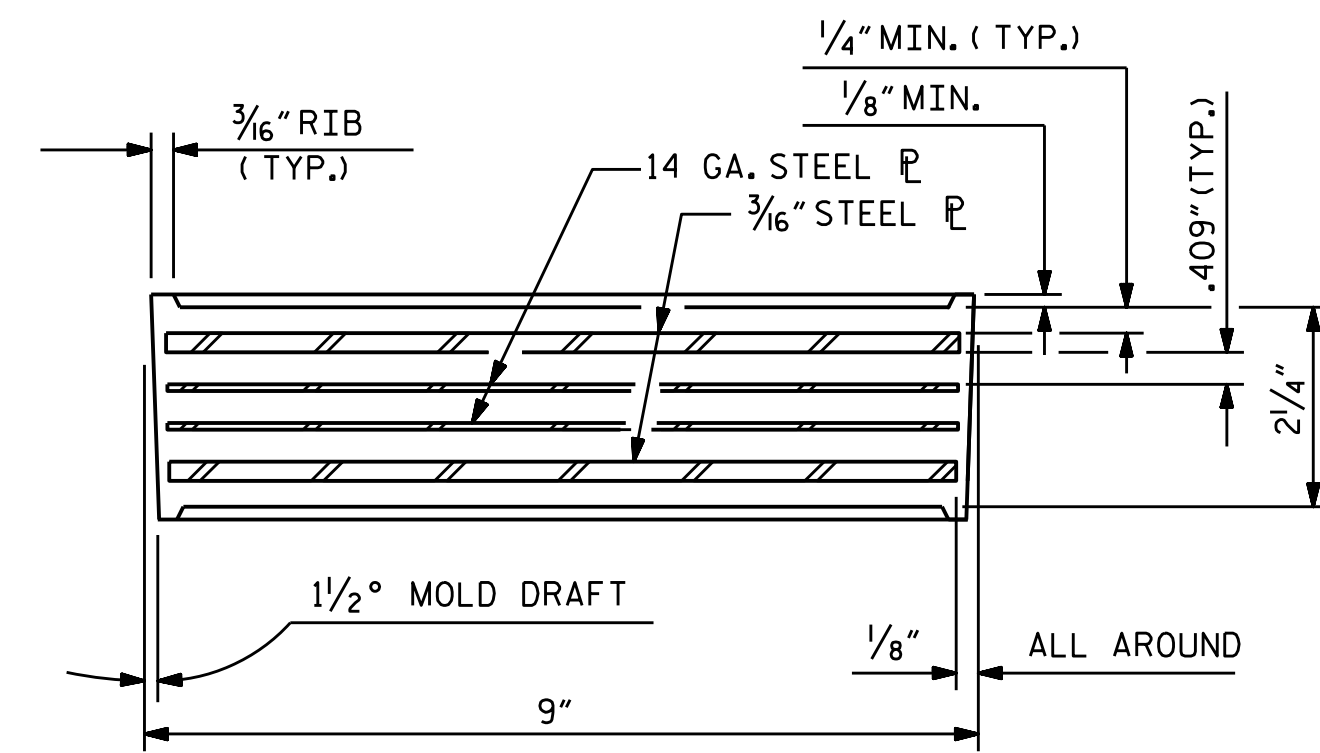
TYPICAL SECTION OF ELASTOMERIC BEARINGS



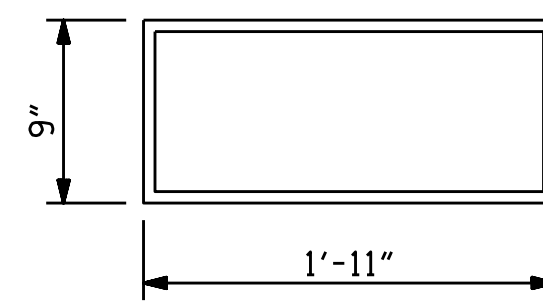
E2 (5 REQ'D)

PLAN VIEW OF ELASTOMERIC BEARING

TYPE III



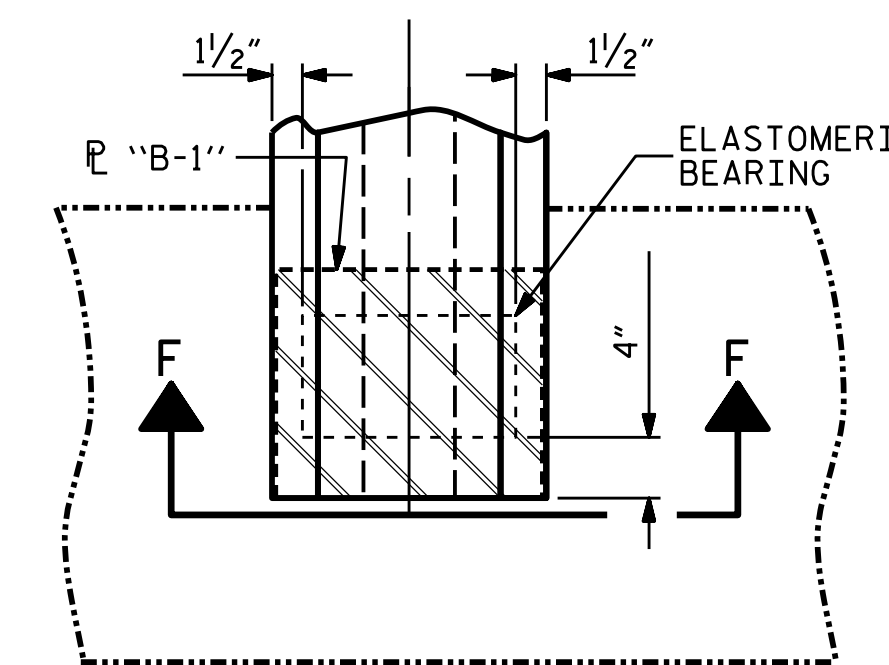
TYPICAL SECTION OF ELASTOMERIC BEARINGS



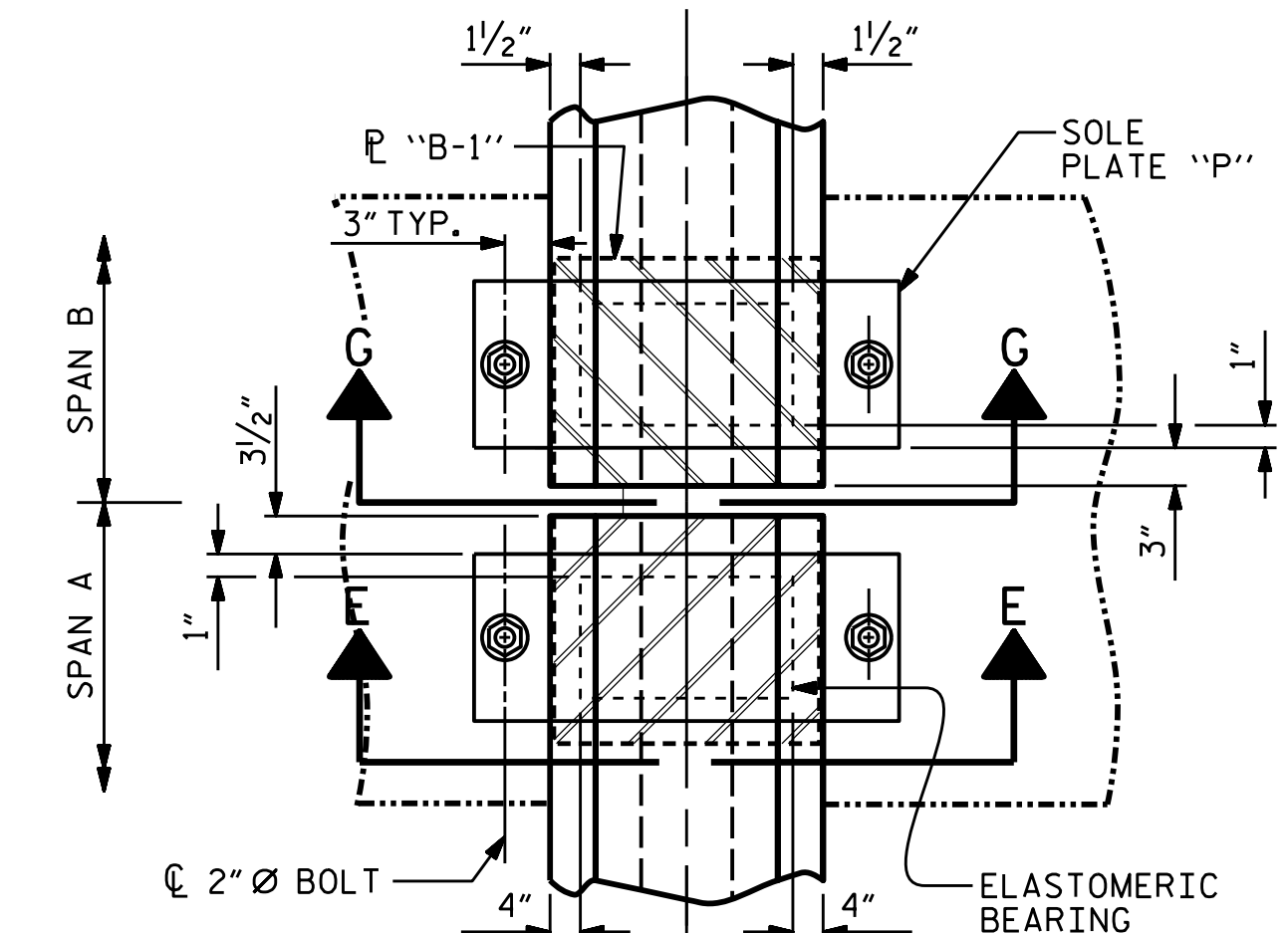
E4 (15 REQ'D)

PLAN VIEW OF ELASTOMERIC BEARING

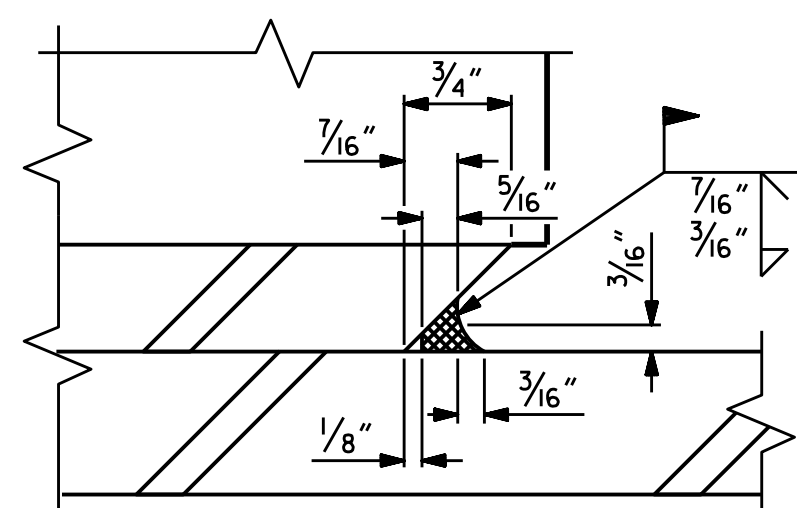
TYPE V



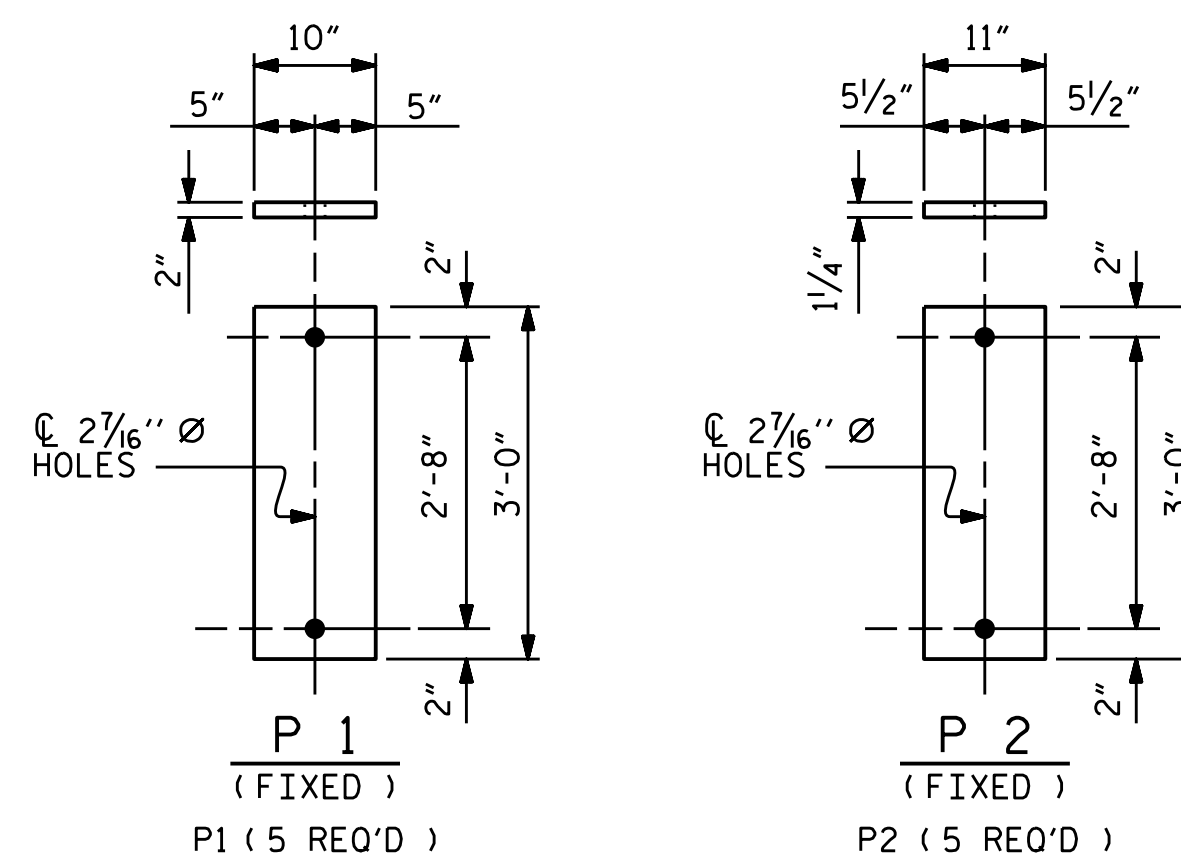
TYPICAL PLAN (SHOWING INTEGRAL END BENT)



TYPICAL PLAN (SHOWING CONTINUOUS BENT)



DETAIL "A"



SOLE PLATE DETAILS ("P")

MAXIMUM ALLOWABLE SERVICE LOADS

D.L.+L.L. (NO IMPACT)

TYPE III 205 k

TYPE V 365 k

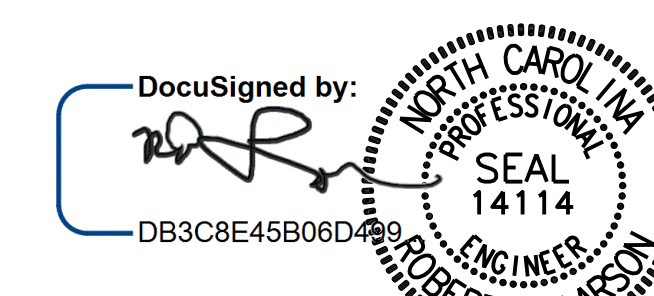
PROJECT NO. R-2561CA

COLUMBUS COUNTY

STATION: 71+06.00 -L-

STATE OF NORTH CAROLINA
DEPARTMENT OF TRANSPORTATION
RALEIGH

STANDARD
ELASTOMERIC BEARING
PRESTRESSED CONCRETE GIRDER
SUPERSTRUCTURE
RIGHT LANE



8/15/2022

REVISIONS						SHEET NO.
NO.	BY:	DATE:	NO.	BY:	DATE:	S4-14
1			3			TOTAL SHEETS
2			4			29

DOCUMENT NOT CONSIDERED FINAL UNLESS ALL SIGNATURES COMPLETED

ENGINEERS & PLANNERS & SCIENTISTS & CONSTRUCTION MANAGERS LICENSE NUMBER: C-074
KCI Associates
of North Carolina, P.A.
4505 Folsom Road, Suite 400, Raleigh, NC 27609-2710 Phone: 919-783-9241

\$FILEL\$ \$DATES\$ \$TIME\$ \$USERS\$ \$PENTBL\$ \$PLTDV\$ \$S\$ \$KCI PROJECT NO. 241704391.04

DESIGN ENGINEER OF RECORD:	DATE:	8/15/2022
ASSEMBLED BY: R. C. LARSON	DATE:	07/01/20
CHECKED BY: R. F. DECOLA	DATE:	11/10/20
DRAWN BY: EEM 2/97	REV. 6/13	AAC/MAA
CHECKED BY: VAP 2/97	REV. 1/15	MAA/TMC
	REV. 12/17	MAA/THC