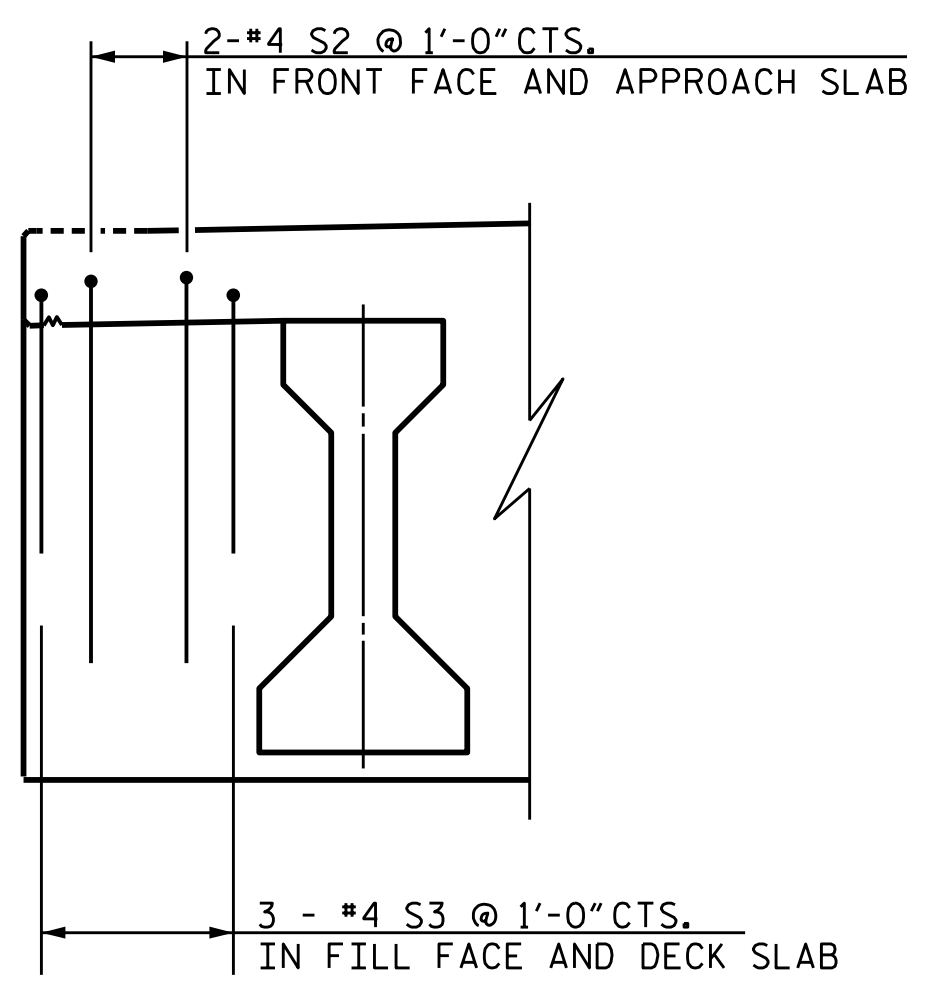


TYPICAL HALF SECTION
AT INTEGRAL END BENT 1 & 2 DIAPHRAGM

TYPICAL HALF SECTION AT
INTERMEDIATE DIAPHRAGM

TYPICAL SECTION



DETAIL B
(TYP. EA. SIDE
@ END BENTS)

NOTES

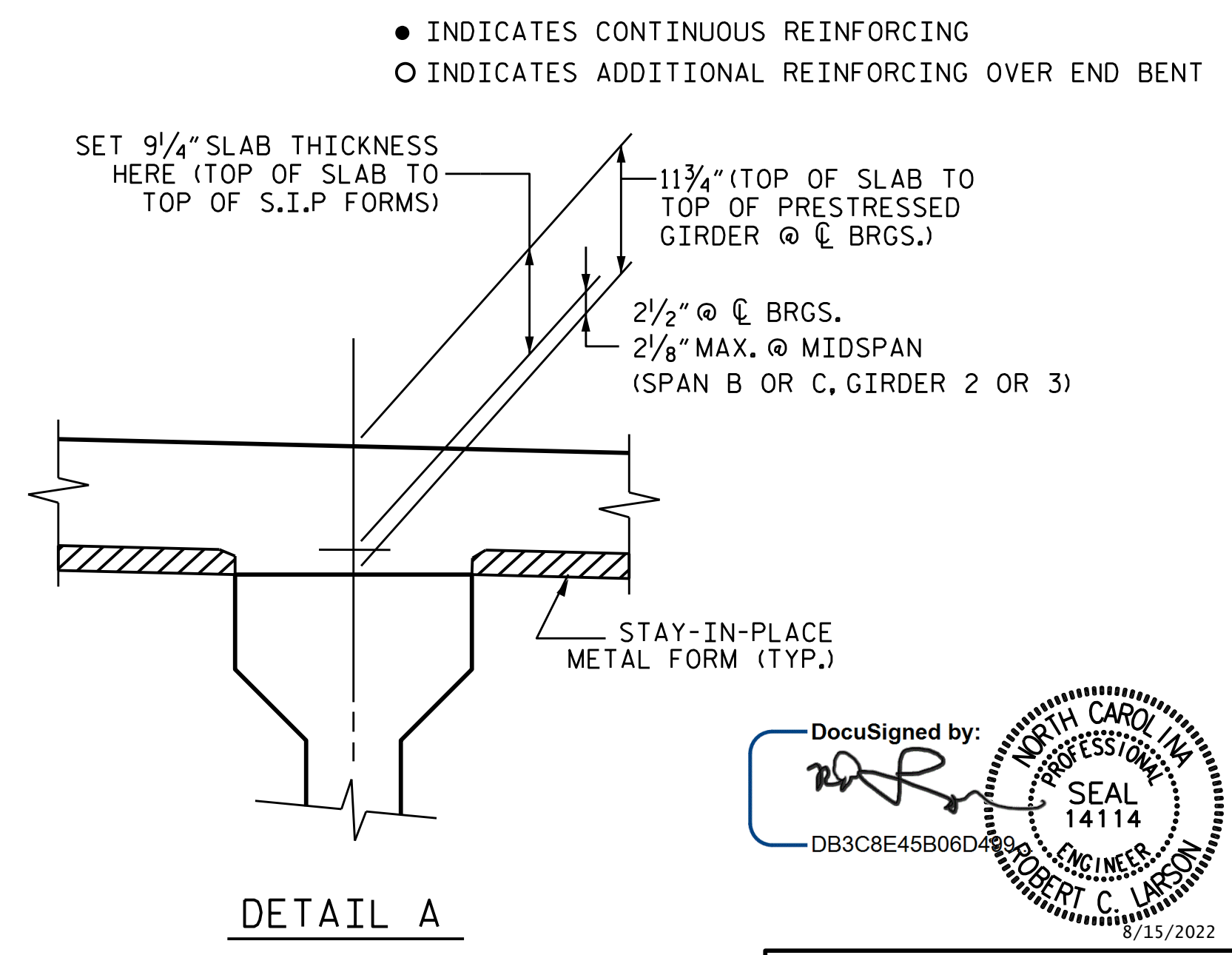
PROVIDE 1/4" HIGH BEAM BOLSTERS UPPER AT 4'-0" CTS. ATOP THE METAL STAY-IN-PLACE FORMS TO SUPPORT THE BOTTOM MAT OF 'A' BARS. WHEN USING REMOVABLE FORMS, PROVIDE CONTINUOUS HIGH CHAIRS FOR METAL DECK (CHCM) @ 4'-0" CTS. WITH A HEIGHT TO SUPPORT THE BOTTOM MAT OF 'A' BARS A CLEAR DISTANCE OF 2 1/2" ABOVE THE TOP OF THE REMOVABLE FORM.

LONGITUDINAL STEEL MAY BE SHIFTED SLIGHTLY, AS NECESSARY, TO AVOID INTERFERENCE WITH STIRRUPS IN PRESTRESSED CONCRETE GIRDERS.

PREVIOUSLY CAST CONCRETE SHALL HAVE ATTAINED A MINIMUM COMPRESSIVE STRENGTH OF 3,000 PSI BEFORE ADDITIONAL CONCRETE IS CAST IN THE CONTINUOUS UNIT.

BARRIER RAIL IN A CONTINUOUS UNIT SHALL NOT BE CAST UNTIL ALL SLAB CONCRETE IN THAT UNIT HAS BEEN CAST AND REACHED A MINIMUM COMPRESSIVE STRENGTH OF 3,000 PSI

SEE BARRIER RAIL DRAWINGS FOR ADDITIONAL REINFORCING STEEL EMBEDDED IN DECK.



DETAIL A

● INDICATES CONTINUOUS REINFORCING
○ INDICATES ADDITIONAL REINFORCING OVER END BENT

PROJECT NO. R-2561CA
COLUMBUS COUNTY
STATION: 70+34.00 -L-

SHEET 1 OF 3

STATE OF NORTH CAROLINA
DEPARTMENT OF TRANSPORTATION
RALEIGH

SUPERSTRUCTURE TYPICAL SECTION

LEFT LANE

DESIGN ENGINEER OF RECORD: <u>R. C. LARSON</u>	DATE: <u>8/15/2022</u>
DRAWN BY: <u>A. K. ALLANKI</u>	DATE: <u>07/31/19</u>
CHECKED BY: <u>R. C. LARSON</u>	DATE: <u>06/16/20</u>

REVISIONS				SHEET NO.	
NO.	BY:	DATE:	NO.	BY:	DATE:
1			3		
2			4		

TOTAL SHEETS
30

DocuSigned by:

DB3C8E45B06D499
NORTH CAROLINA PROFESSIONAL SEAL 14114
ENGINEER
ROBERT C. LARSON
8/15/2022

**DOCUMENT NOT CONSIDERED FINAL
UNLESS ALL SIGNATURES COMPLETED**

ENGINEERS • PLANNERS • SCIENTISTS • CONSTRUCTION MANAGERS LICENSE NUMBER: C-0754
KCI Associates
of North Carolina, P.A.
4505 Falls of Neuse Road, Suite 400 Raleigh, NC 27609-6270 Phone: (919) 783-9241

\$FILEL\$ \$DATES\$ \$TIME\$ \$USERS\$ \$PENTBLS\$ \$PLTDORV\$ \$ \$PROJECT NO. 241704391.04