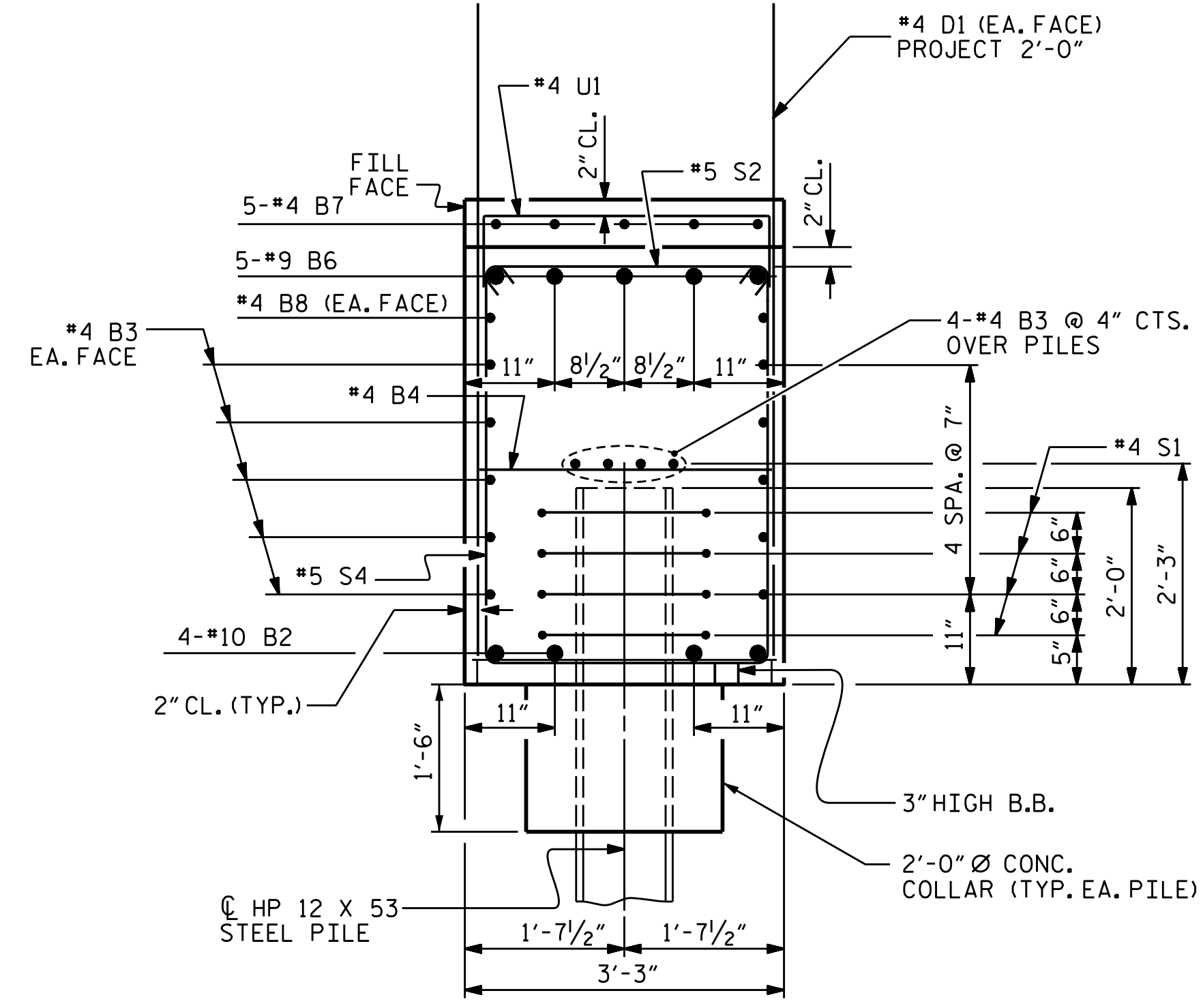
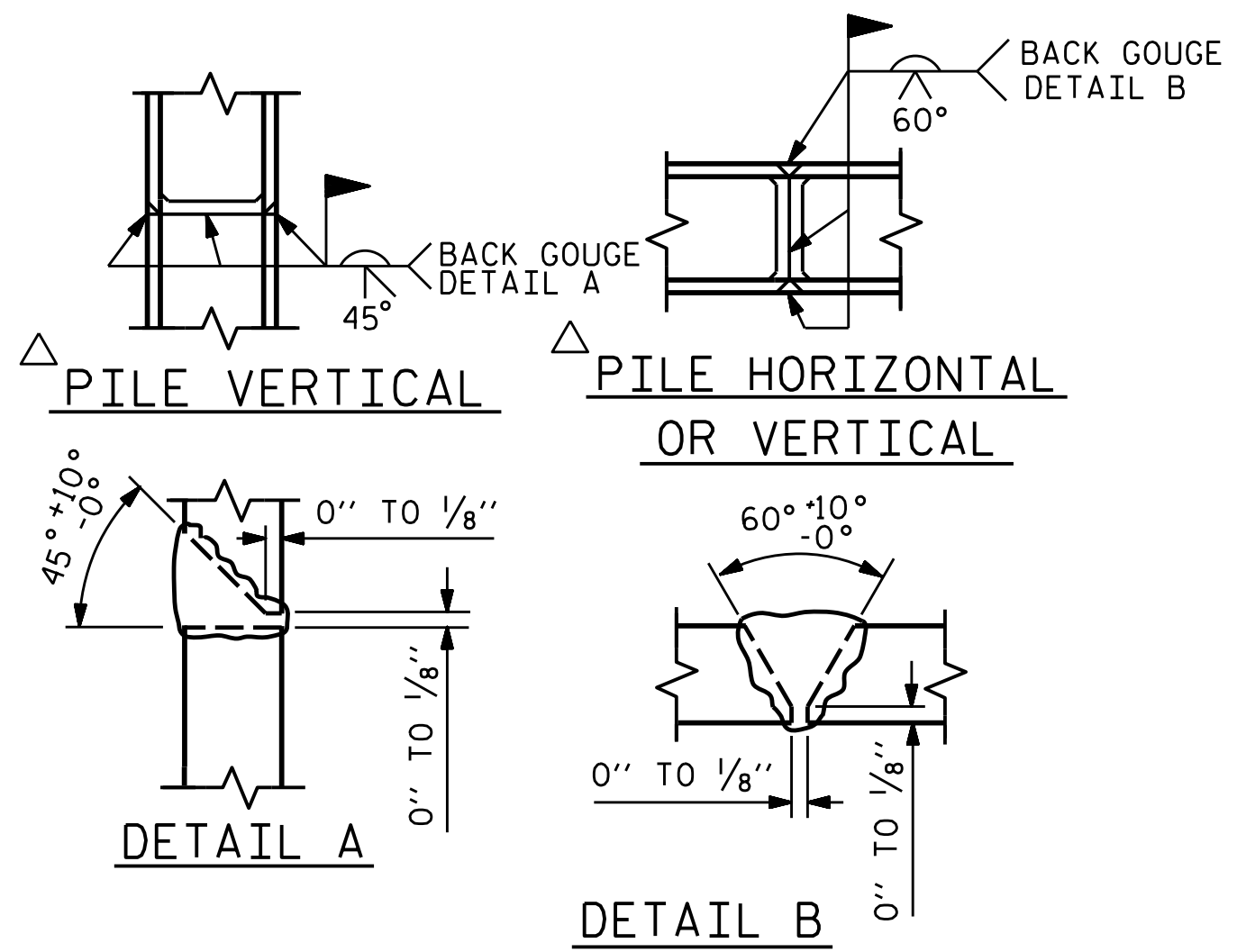


SECTION A-A

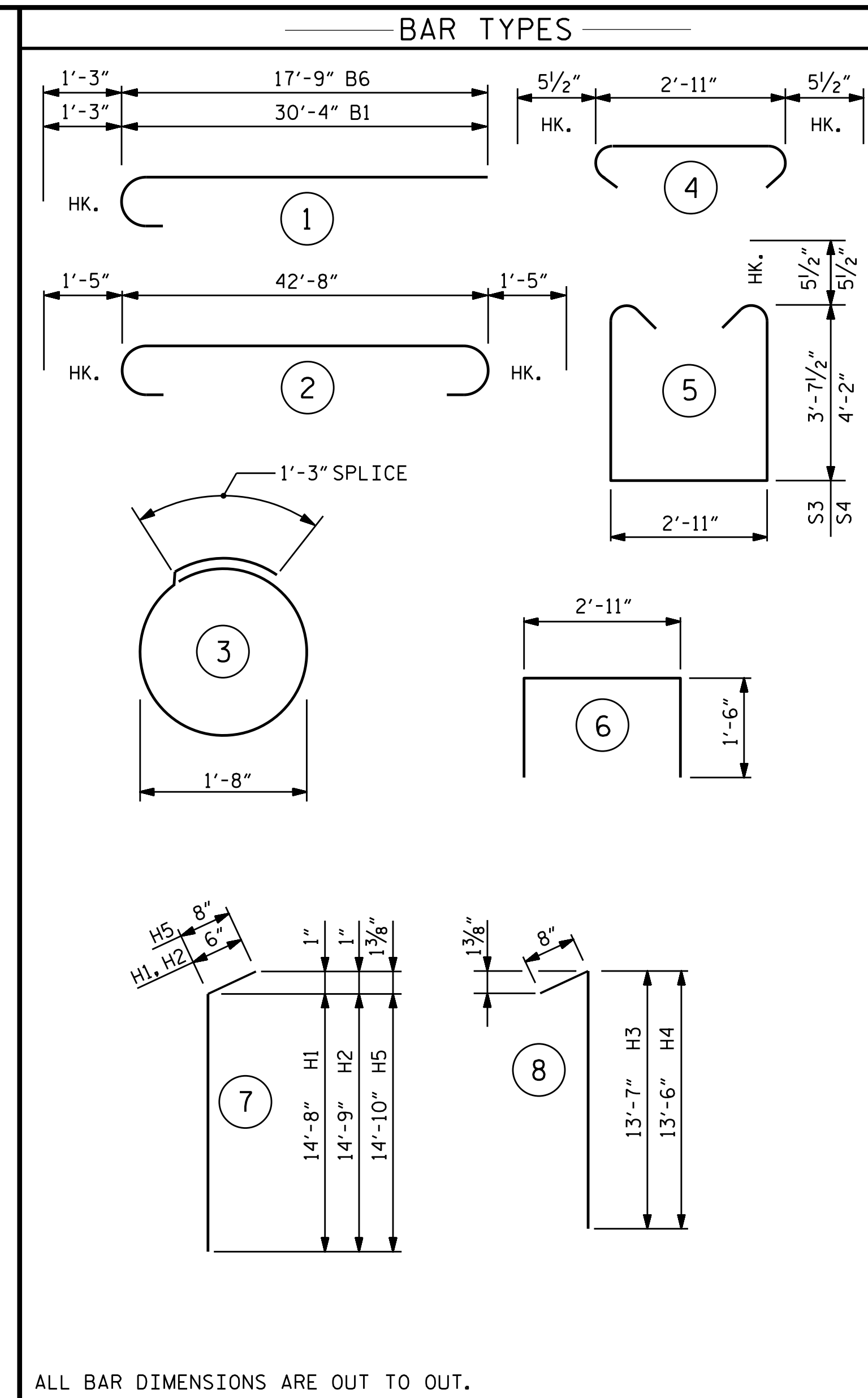


SECTION B-B



△ POSITION OF PILE DURING WELDING.

PILE SPLICE DETAILS



ALL BAR DIMENSIONS ARE OUT TO OUT.

BILL OF MATERIAL					
END BENT 1					
BAR NO.	SIZE	TYPE	LENGTH	WEIGHT	
B1	5	9	1	31'-7"	537
B2	4	10	2	45'-6"	783
B3	28	4	STR.	22'-8"	424
B4	18	4	STR.	2'-11"	23
B5	5	4	STR.	11'-0"	37
B6	5	9	1	19'-0"	323
B7	5	4	STR.	7'-11"	26
B8	2	4	STR.	14'-9"	23
D1	56	4	STR.	5'-10"	218
H1	22	5	7	15'-2"	348
H2	12	5	7	15'-3"	191
H3	20	6	8	14'-3"	428
H4	20	6	8	14'-2"	426
H5	10	6	7	15'-6"	233
K1	24	4	STR.	2'-8"	43
S1	24	4	3	6'-6"	104
S2	35	5	4	3'-10"	140
S3	21	5	5	11'-1"	243
S4	14	5	5	12'-2"	178
U1	13	4	6	5'-11"	51
V1	36	5	STR.	10'-6"	394
V2	34	4	STR.	9'-6"	216
V3	14	4	STR.	4'-6"	42
REINFORCING STEEL, LBS.					5430
CLASS A CONCRETE, CY					
POUR 1 (CAP, LOWER PORTION OF WINGS AND COLLARS)					29.4
POUR 2 (UPPER PORTION OF WINGS)					7.3
TOTAL					36.7
HP 12X53 STEEL PILES NO.					6
L.F.					300
PILE DRIVING EQUIPMENT SETUP FOR HP 12X53 STEEL PILES, EA.					6
PILE REDRIVES, EA.					3

PROJECT NO. R-2561CA
COLUMBUS COUNTY
 STATION: 16+93.00 -Y-

SHEET 3 OF 3

STATE OF NORTH CAROLINA
 DEPARTMENT OF TRANSPORTATION
 RALEIGH

**SUBSTRUCTURE
 END BENT 1**

DocuSigned by:

 DB3C8E45B06D499
 NORTH CAROLINA PROFESSIONAL SEAL 14114
 ENGINEER ROBERT C. LARSON
 8/15/2022

DESIGN ENGINEER OF RECORD	DATE
	8/15/2022
DRAWN BY: A. K. ALLANKI	DATE: 04/14/20
CHECKED BY: R. F. DECOLA	DATE: 05/29/20

DOCUMENT NOT CONSIDERED FINAL
 UNLESS ALL SIGNATURES COMPLETED

ENGINEERS & PLANNERS & SCIENTISTS & CONSTRUCTION MANAGERS LICENSE NUMBER: C-0764

 400 Falls of House Road, Suite 400 Raleigh, NC 27609-6270 Phone 919-785-5241

REVISIONS				SHEET NO.	
NO.	BY:	DATE:	NO.	BY:	DATE:
1			3		
2			4		

TOTAL SHEETS: 24

\$FILEL\$ \$DATES\$ \$TIME\$ \$USER\$ \$PLTDRVS\$ \$PENTBLS\$ \$PROJECT NO. 241704391.04