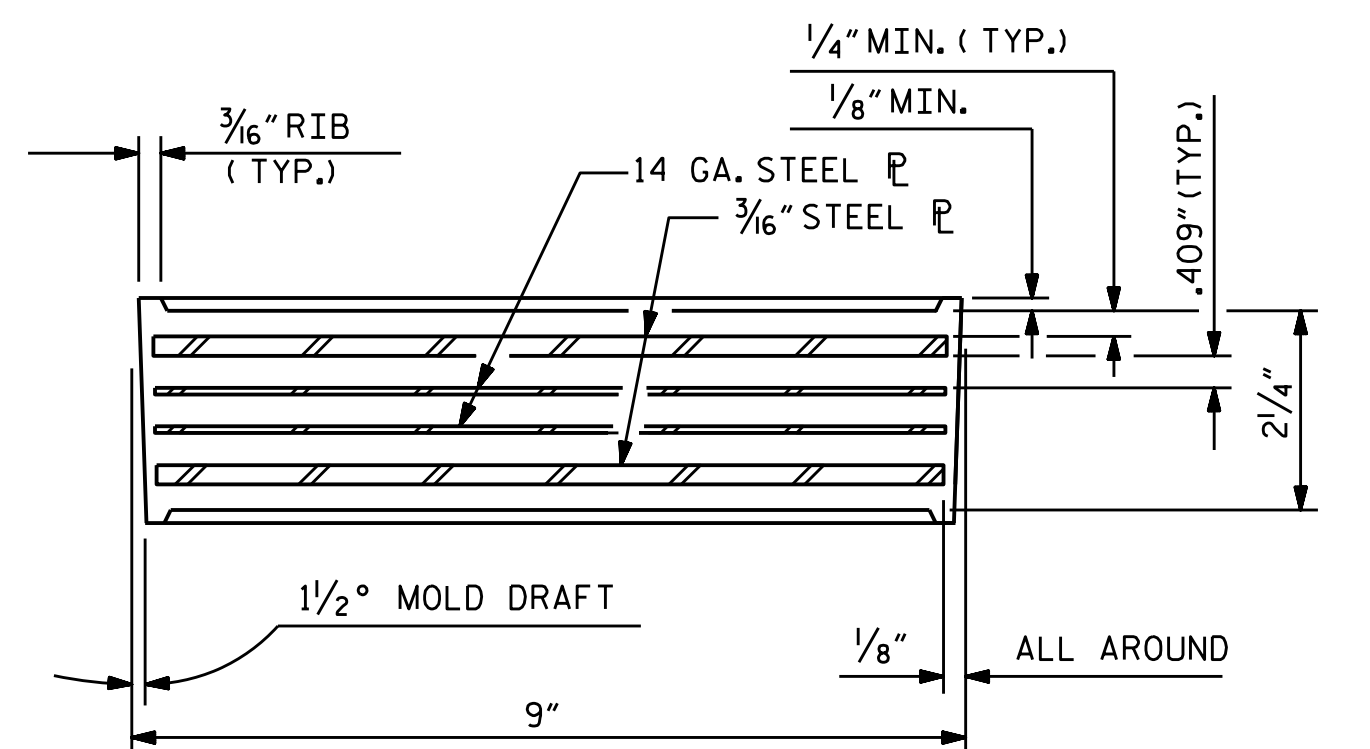
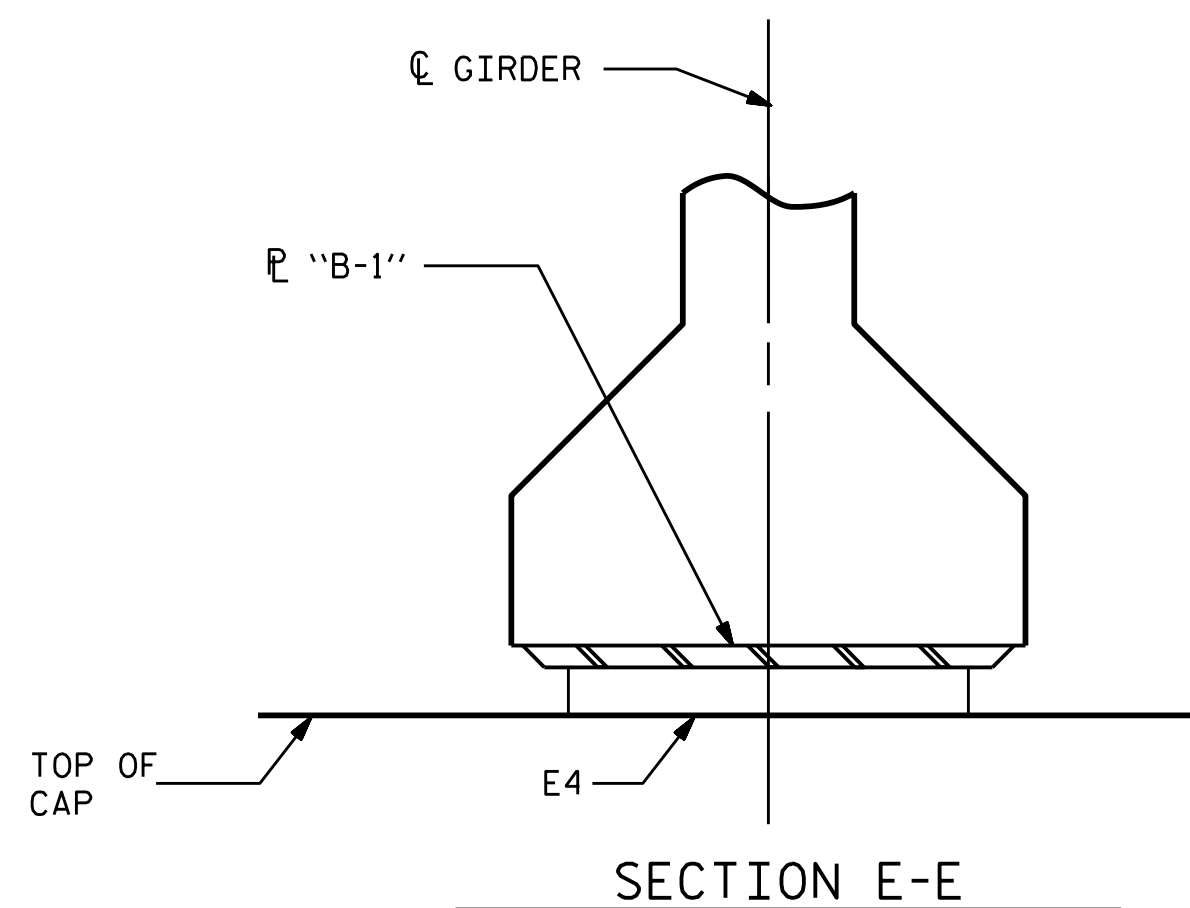


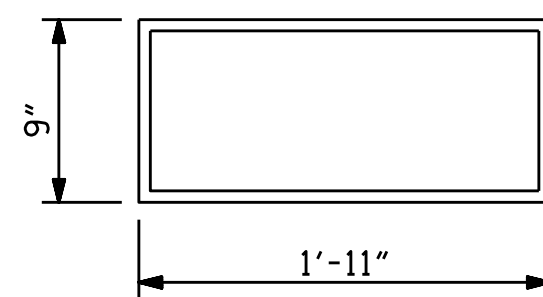
NOTES

THE ELASTOMER IN THE STEEL REINFORCED BEARINGS SHALL HAVE A SHEAR MODULUS OF 0.160 KSI, IN ACCORDANCE WITH AASHTO M251.

FOR STEEL REINFORCED ELASTOMERIC BEARINGS, SEE SPECIAL PROVISIONS.



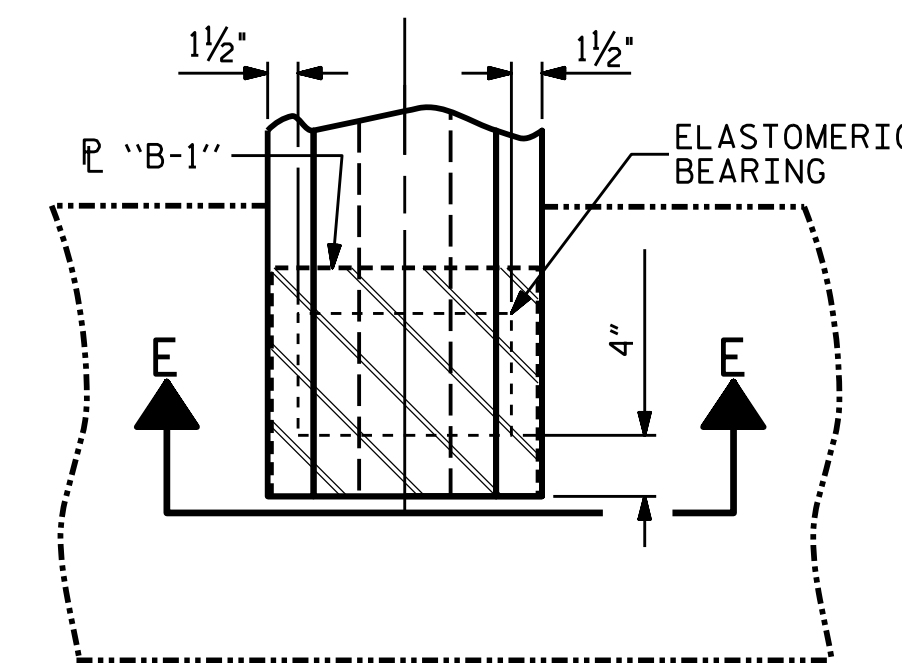
TYPICAL SECTION OF ELASTOMERIC BEARINGS



E4 (8 REQ'D)

PLAN VIEW OF ELASTOMERIC BEARING

TYPE V



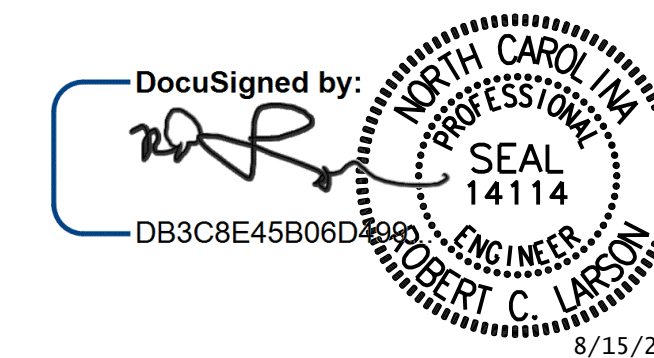
TYPICAL PLAN

(SHOWING INTEGRAL END BENT)

MAXIMUM ALLOWABLE SERVICE LOADS	
D.L.+L.L. (NO IMPACT)	
TYPE V	365 k

PROJECT NO. R-2561CA
COLUMBUS COUNTY
 STATION: 16+93.00 -Y-

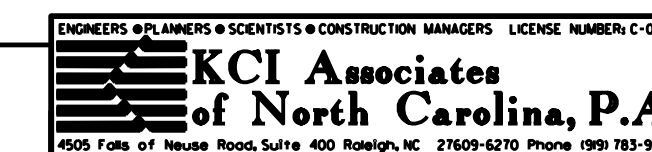
DESIGN ENGINEER OF RECORD	DocuSigned by:	DATE: 8/15/2022
ASSEMBLED BY: A. K. ALLANK	DATE: 07/19/19	
CHECKED BY: R. C. LARSON	DATE: 04/08/20	
DRAWN BY: EEM 2/97	REV. 6/13 AAC/MAA	
CHECKED BY: VAP 2/97	REV. 1/15 MAA/TMG	
	REV. 12/17 MAA/THC	



STATE OF NORTH CAROLINA
 DEPARTMENT OF TRANSPORTATION
 RALEIGH
 STANDARD
ELASTOMERIC BEARING DETAILS
 PRESTRESSED CONCRETE GIRDER
 SUPERSTRUCTURE

REVISIONS						SHEET NO.
NO.	BY:	DATE:	NO.	BY:	DATE:	S2-12
1			3			TOTAL SHEETS 24
2			4			

DOCUMENT NOT CONSIDERED FINAL UNLESS ALL SIGNATURES COMPLETED



STD. NO. EB4

\$FILEL\$ \$TIME\$ \$USERS\$ \$PLTDYVS\$ \$PENTBLS\$ \$PLTDYVS\$ \$PROJECT NO. 241704391.04