

NOTES

ALL PRESTRESSING STRANDS SHALL BE 7-WIRE LOW-RELAXATION GRADE 270 STRANDS AND SHALL CONFORM TO AASHTO M203 EXCEPT FOR SAMPLING REQUIREMENTS WHICH SHALL BE IN ACCORDANCE WITH THE STANDARD SPECIFICATIONS.

ALL REINFORCING STEEL SHALL BE GRADE 60.

EMBEDDED PLATE "B-1" SHALL BE GALVANIZED IN ACCORDANCE WITH THE STANDARD SPECIFICATIONS.

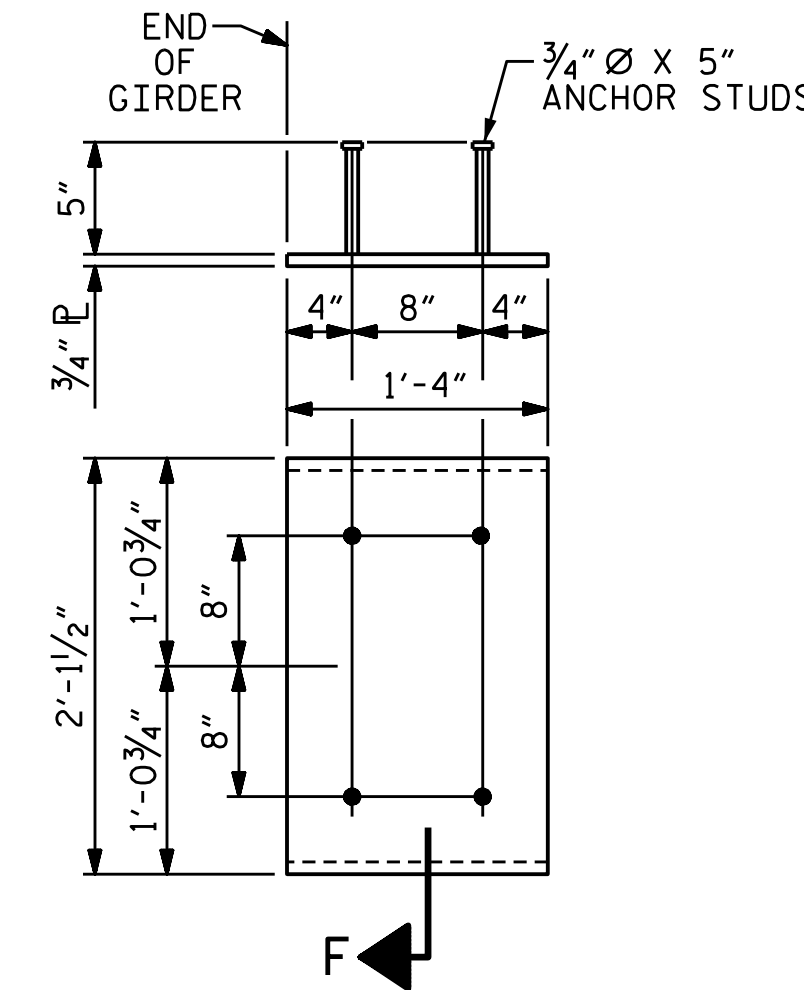
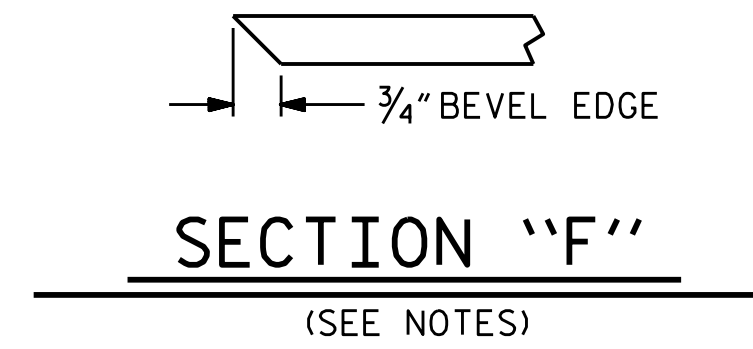
ANCHOR STUDS SHALL CONFORM TO AASHTO M169 GRADES 1010 THROUGH 1020 OR APPROVED EQUAL, AND SHALL MEET THE TYPE "B" REQUIREMENTS OF SUBSECTION 7.3 OF THE ANSI/AASHTO/AWS D1.5 BRIDGE WELDING CODE.

AT ENDS OF GIRDERS TO BE EMBEDDED IN CONCRETE DIAPHRAGMS OR END WALLS, PRESTRESSING STRANDS MAY EXTEND A MAXIMUM OF 2" BEYOND THE GIRDER ENDS. OTHERWISE, PRESTRESSING STRANDS SHALL BE CUT FLUSH WITH THE GIRDER ENDS.

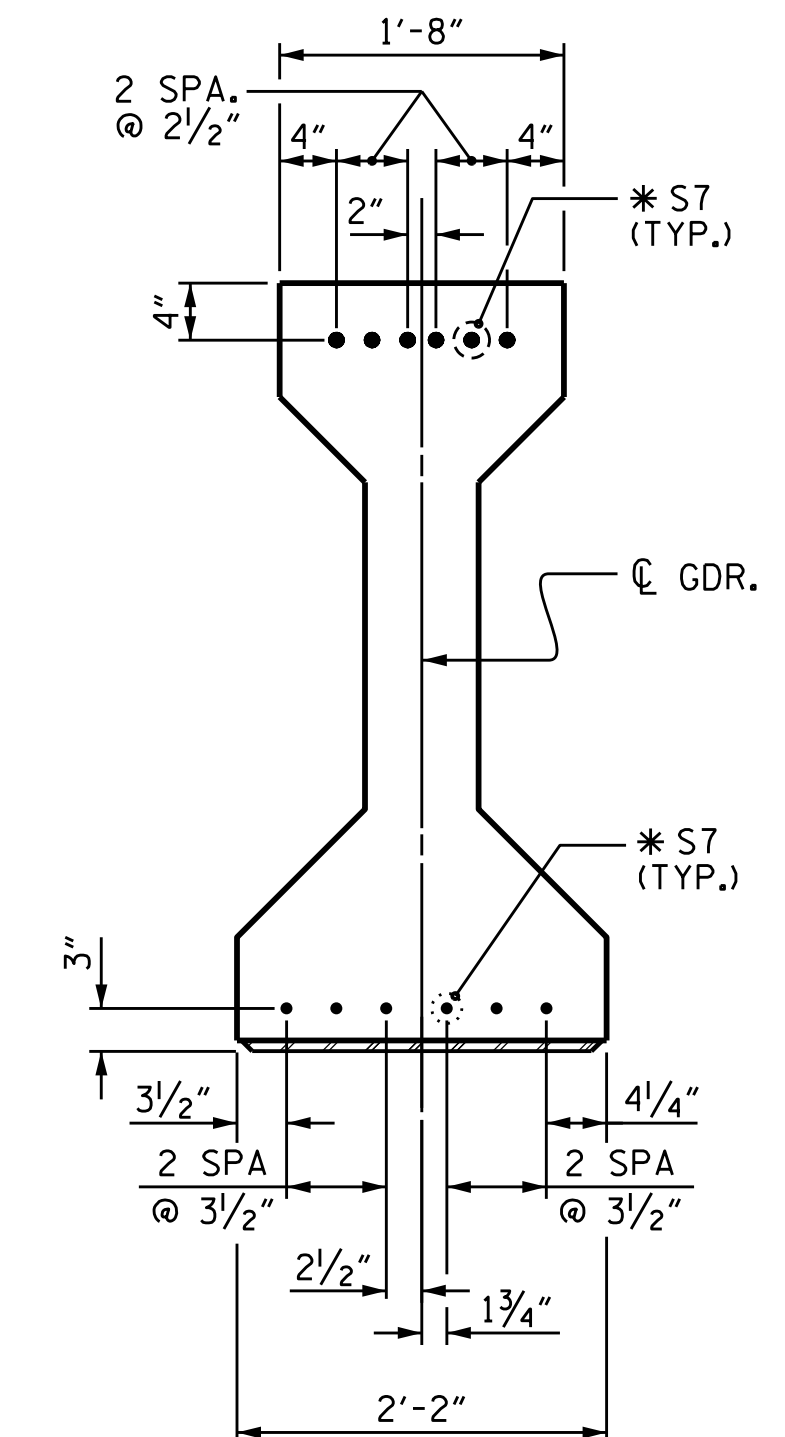
THE TRANSFER OF LOAD FROM THE ANCHORAGES TO THE GIRDER SHALL BE DONE WHEN CONCRETE HAS REACHED A COMPRESSIVE STRENGTH OF NOT LESS THAN 4400 PSI.

DEPENDING ON THE TYPE OF SYSTEM USED TO SUPPORT THE DECK SLAB FORMS, PRESET ANCHORS MAY BE NECESSARY IN THE PRESTRESSED CONCRETE GIRDER.

THE TOP SURFACE OF THE GIRDER, EXCLUDING THE OUTSIDE 4", SHALL BE RAKED TO A DEPTH OF 1/4".



EMBEDDED PLATE "B-1" DETAILS FOR AASHTO TYPE IV GIRDER (2 REQ'D PER GIRDER)



DETAIL "A" (FOR AASHTO TYPE IV GIRDERS)

DEAD LOAD DEFLECTION TABLE FOR GIRDERS																						
0.6" Ø LOW RELAXATION	SPAN A (INTERIOR)																					
TWENTIETH POINTS	0	.05	.10	.15	.20	.25	.30	.35	.40	.45	.50	.55	.60	.65	.70	.75	.80	.85	.90	.95	1.00	
CAMBER (GIRDER ALONE IN PLACE)	↑	0.000	0.027	0.054	0.078	0.101	0.121	0.139	0.152	0.162	0.168	0.170	0.168	0.162	0.152	0.139	0.121	0.101	0.078	0.054	0.027	0
* DEFLECTION DUE TO SUPERIMPOSED D.L.	↓	0.000	0.020	0.037	0.058	0.073	0.089	0.101	0.112	0.119	0.124	0.125	0.124	0.119	0.112	0.101	0.089	0.073	0.058	0.037	0.020	0
FINAL CAMBER	↑	0	1/16"	3/16"	1/4"	5/16"	3/8"	7/16"	1/2"	1/2"	9/16"	9/16"	9/16"	1/2"	1/2"	7/16"	3/8"	5/16"	1/4"	3/16"	1/16"	0

DEAD LOAD DEFLECTION TABLE FOR GIRDERS																						
0.6" Ø LOW RELAXATION	SPAN A (EXTERIOR)																					
TWENTIETH POINTS	0	.05	.10	.15	.20	.25	.30	.35	.40	.45	.50	.55	.60	.65	.70	.75	.80	.85	.90	.95	1.00	
CAMBER (GIRDER ALONE IN PLACE)	↑	0.000	0.027	0.054	0.078	0.101	0.121	0.139	0.152	0.162	0.168	0.170	0.168	0.162	0.152	0.139	0.121	0.101	0.078	0.054	0.027	0
* DEFLECTION DUE TO SUPERIMPOSED D.L.	↓	0.000	0.018	0.033	0.052	0.066	0.081	0.091	0.101	0.108	0.112	0.113	0.112	0.108	0.101	0.091	0.081	0.066	0.052	0.033	0.018	0
FINAL CAMBER	↑	0	1/8"	1/4"	5/16"	7/16"	1/2"	9/16"	5/8"	5/8"	11/16"	11/16"	11/16"	5/8"	5/8"	9/16"	1/2"	7/16"	5/16"	1/4"	1/8"	0

* INCLUDES FUTURE WEARING SURFACE
ALL VALUES ARE SHOWN IN FEET (DECIMAL FORM), EXCEPT " FINAL CAMBER ", WHICH IS GIVEN IN INCHES (FRACTION FORM).

PROJECT NO. R-2561CA
COLUMBUS COUNTY
STATION: 16+93.00 -Y-

SHEET 2 OF 2

STATE OF NORTH CAROLINA
DEPARTMENT OF TRANSPORTATION
RALEIGH
STANDARD
PRESTRESSED CONCRETE GIRDER
CONTINUOUS FOR LIVE LOAD
DETAILS

DocuSigned by:
[Signature]
DB3C8E45B06D499
NORTH CAROLINA PROFESSIONAL ENGINEER SEAL 14114 ROBERT C. LARSON

DESIGN ENGINEER OF RECORD: [Signature] DATE: 8/15/2022
ASSEMBLED BY: Z. KADI DATE: 07/02/20
CHECKED BY: R. C. LARSON DATE: 07/06/20
DRAWN BY: ELR 11/91 REV. 1/15 MAA/TMG
CHECKED BY: GRP 11/91 REV. 2/15 MAA/TMG
REV. 12/17 MAA/THC

DOCUMENT NOT CONSIDERED FINAL UNLESS ALL SIGNATURES COMPLETED

KCI Associates of North Carolina, P.A.
1905 Falls of Neuse Road, Suite 400 Raleigh, NC 27609-6270 Phone (919) 785-9241

REVISIONS						SHEET NO.	
NO.	BY:	DATE:	NO.	BY:	DATE:	S2- 10	
1			3			TOTAL SHEETS 24	
2			4				

\$FILEL\$ \$DATE\$ \$TIME\$ \$USERS\$ \$PENTBL\$ \$PLTDV\$ \$KCI PROJECT NO. 241704391.04