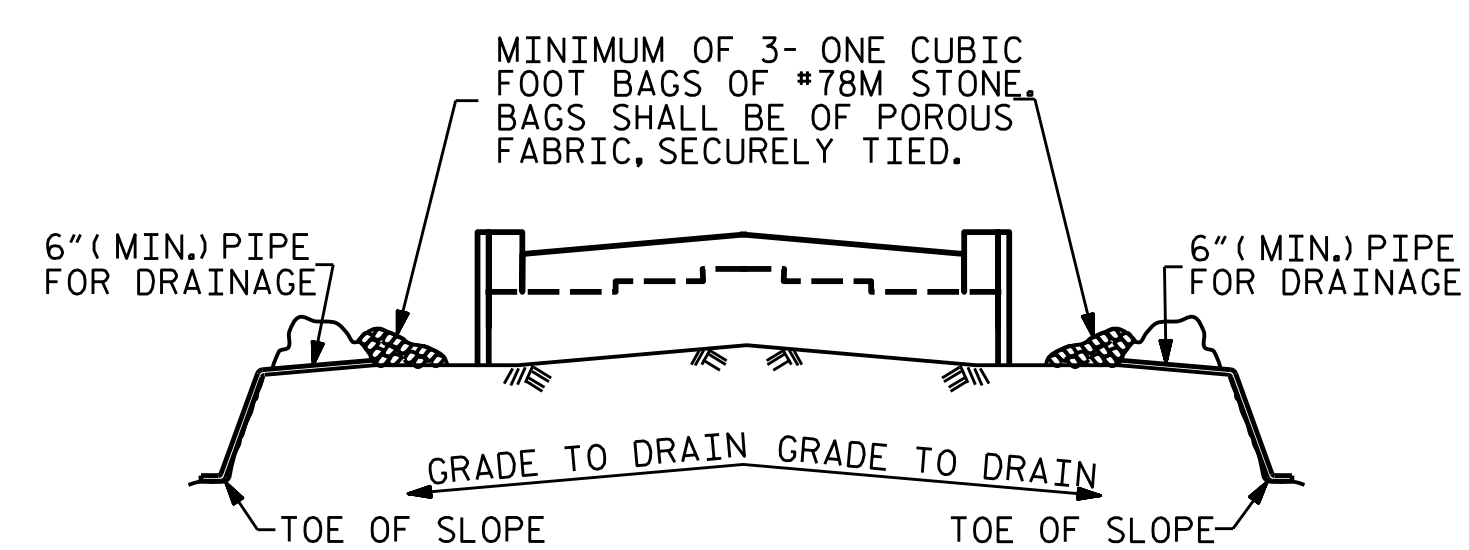


SECTION A-A

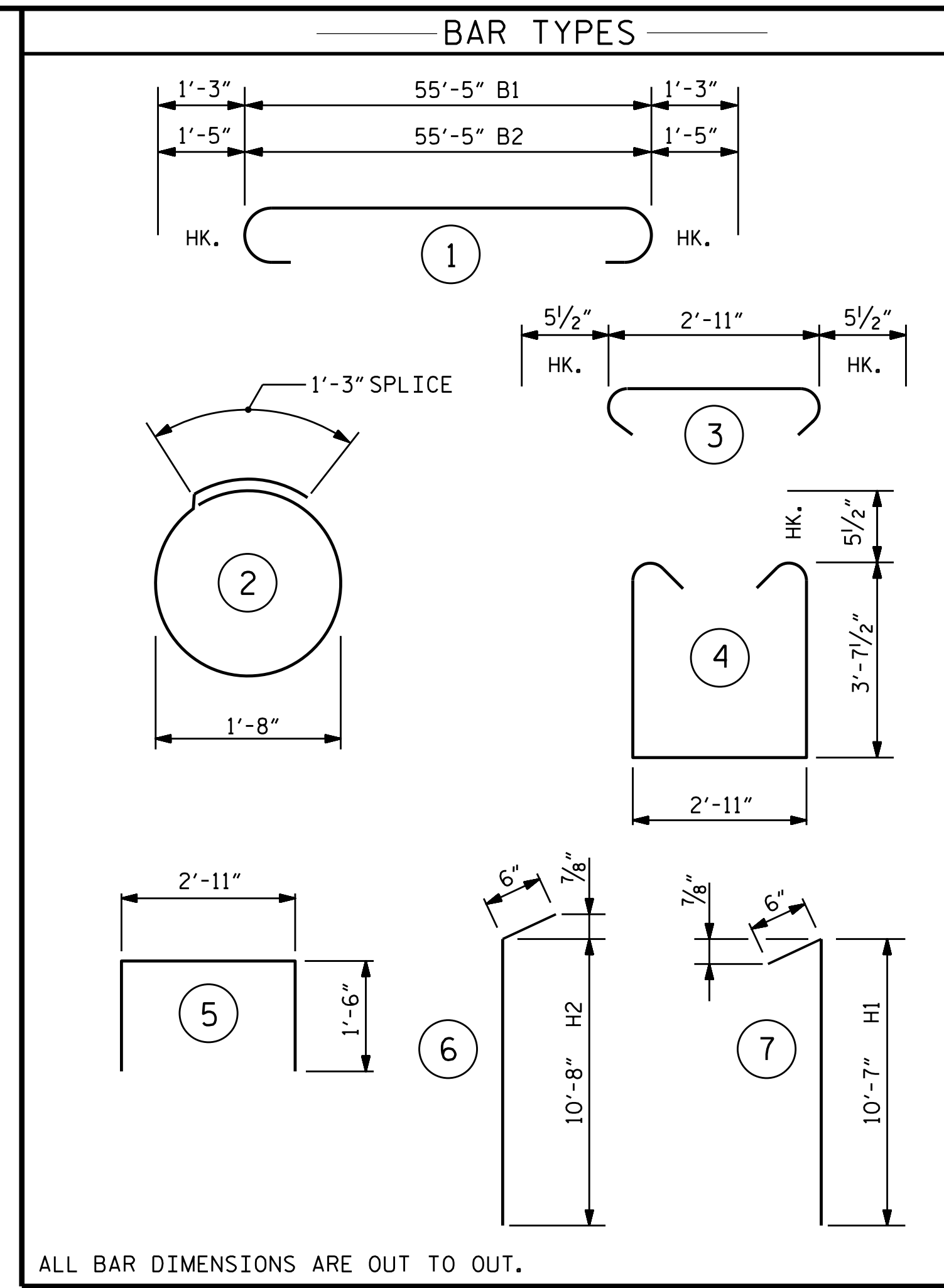


BAGGED STONE AND PIPE SHALL BE PLACED IMMEDIATELY AFTER COMPLETION OF END BENT EXCAVATION. PIPE MAY BE EITHER CONCRETE, CORRUGATED STEEL, CORRUGATED ALUMINUM ALLOY, OR CORRUGATED PLASTIC. PERFORATED PIPE WILL NOT BE ALLOWED.

BAGGED STONE SHALL REMAIN IN PLACE UNTIL THE ENGINEER DIRECTS THAT IT BE REMOVED. THE CONTRACTOR SHALL REMOVE AND DISPOSE OF SILT ACCUMULATIONS AT BAGGED STONE WHEN SO DIRECTED BY THE ENGINEER. BAGS SHALL BE REMOVED AND REPLACED WHENEVER THE ENGINEER DETERMINES THAT THEY HAVE DETERIORATED AND LOST THEIR EFFECTIVENESS.

NO SEPARATE PAYMENT WILL BE MADE FOR THIS WORK AND THE ENTIRE COST OF THIS WORK SHALL BE INCLUDED IN THE UNIT CONTRACT PRICE BID FOR THE SEVERAL PAY ITEMS.

TEMPORARY DRAINAGE AT END BENT



ALL BAR DIMENSIONS ARE OUT TO OUT.

- * POUR 1: CAPS, LOWER PART OF WINGS, COLLARS
- * POUR 2: UPPER PART OF WINGS

BILL OF MATERIAL					
END BENT 2					
BAR	NO.	SIZE	TYPE	LENGTH	WEIGHT
B1	5	9	1	58'-3"	990
B2	4	10	1	57'-11"	997
B3	28	4	STR.	28'-1"	525
B4	14	4	STR.	2'-11"	27
B5	5	4	STR.	24'-0"	80
D1	80	4	STR.	5'-10"	312
H1	40	5	7	11'-1"	462
H2	40	5	6	11'-2"	466
K1	24	4	STR.	2'-8"	43
S1	32	4	2	6'-6"	139
S2	49	5	3	3'-10"	196
S3	49	5	4	11'-1"	566
U1	16	4	5	5'-11"	63
V1	56	5	STR.	9'-9"	569
REINFORCING STEEL, LBS.					5435
CLASS A CONCRETE, CY * POUR 1					32.1
* POUR 2					5.9
TOTAL					38.0
HP 12X53 STEEL PILES NO.					8
L.F.					560
PILE DRIVING EQUIPMENT SETUP FOR HP 12X53 STEEL PILES, EA.					8
PILE REDRIVES, EA.					4

DESIGN ENGINEER OF RECORD: DATE: 8/15/2022

DRAWN BY: R.J. FLORY DATE: 03/30/20

CHECKED BY: R.C. LARSON DATE: 04/02/20

DocuSigned by: SEAL 14114 ENGINEER ROBERT C. LARSON 8/15/2022

DOCUMENT NOT CONSIDERED FINAL UNLESS ALL SIGNATURES COMPLETED

KCI Associates of North Carolina, P.A. 4505 Falls of Neuse Road, Suite 400 Raleigh, NC 27609-6270 Phone 919-785-5241

SHEET 3 OF 3

STATE OF NORTH CAROLINA DEPARTMENT OF TRANSPORTATION RALEIGH

SUBSTRUCTURE END BENT 2

REVISIONS		SHEET NO.
NO.	DATE	S1-24
1		TOTAL SHEETS 28
2		