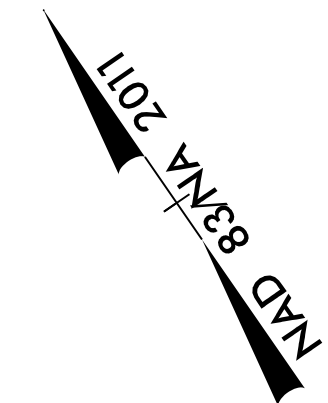
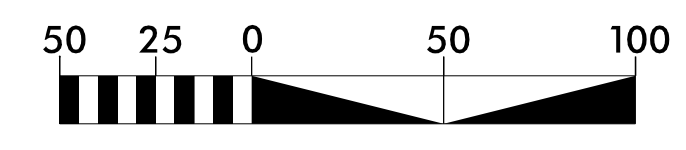


5/14/99
7/11/2002 2561CA_Ut_UCB_psh.dgn
11:58:00



| | |
|--|----------|
| PROJECT REFERENCE NO. | R-2561CA |
| SHEET NO. | UC-8 |
| DESIGNED BY: | BUJO |
| DRAWN BY: | WAP |
| CHECKED BY: | |
| APPROVED BY: | |
| REVISED: | |
| NORTH CAROLINA DEPARTMENT OF TRANSPORTATION | |
| UTILITIES ENGINEERING SEC. PHONE: (919) 707-6690 FAX: (919) 250-4151 | |
| UTILITY CONSTRUCTION PLANS ONLY | |



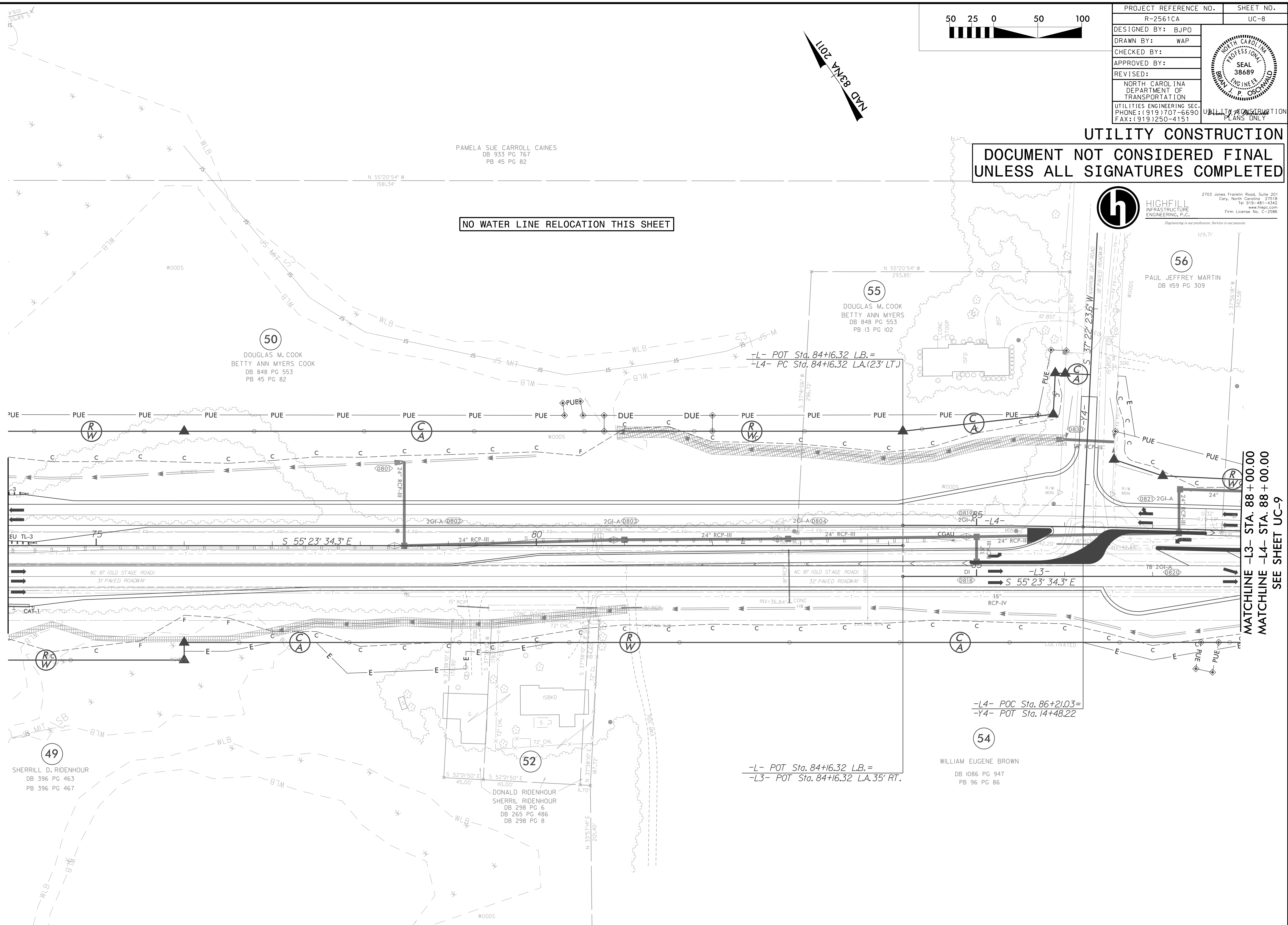
UTILITY CONSTRUCTION

**DOCUMENT NOT CONSIDERED FINAL
UNLESS ALL SIGNATURES COMPLETED**

PAMELA SUE CARROLL CAINES
DB 933 PG 767
PB 45 PG 82

NO WATER LINE RELOCATION THIS SHEET

h HIGHFILL INFRASTRUCTURE ENGINEERING, P.C.
2703 Jones Franklin Road, Suite 201
Cary, North Carolina 27518
Tel: 919-481-4342
www.hiepc.com
Firm License No. C-2586
Engineering is our profession. Service is our passion.



MATCHLINE -L- STA. 74+00.00
SEE SHEET UC-7

MATCHLINE -L3- STA. 88+00.00
MATCHLINE -L4- STA. 88+00.00
SEE SHEET UC-9

49
SHERRILL D. RIDENHOUR
DB 396 PG 463
PB 396 PG 467

50
DOUGLAS M. COOK
BETTY ANN MYERS COOK
DB 848 PG 553
PB 45 PG 82

52
DONALD RIDENHOUR
SHERRILL RIDENHOUR
DB 298 PG 6
DB 265 PG 486
DB 298 PG 8

55
DOUGLAS M. COOK
BETTY ANN MYERS
DB 848 PG 553
PB 13 PG 102

-L- POC Sta. 86+21.03=
-Y4- POT Sta. 14+48.22

54
WILLIAM EUGENE BROWN
DB 1086 PG 947
PB 96 PG 86

-L- POT Sta. 84+16.32 L.B.=
-L3- POT Sta. 84+16.32 L.A. 35' RT.

56
PAUL JEFFREY MARTIN
DB 1159 PG 309