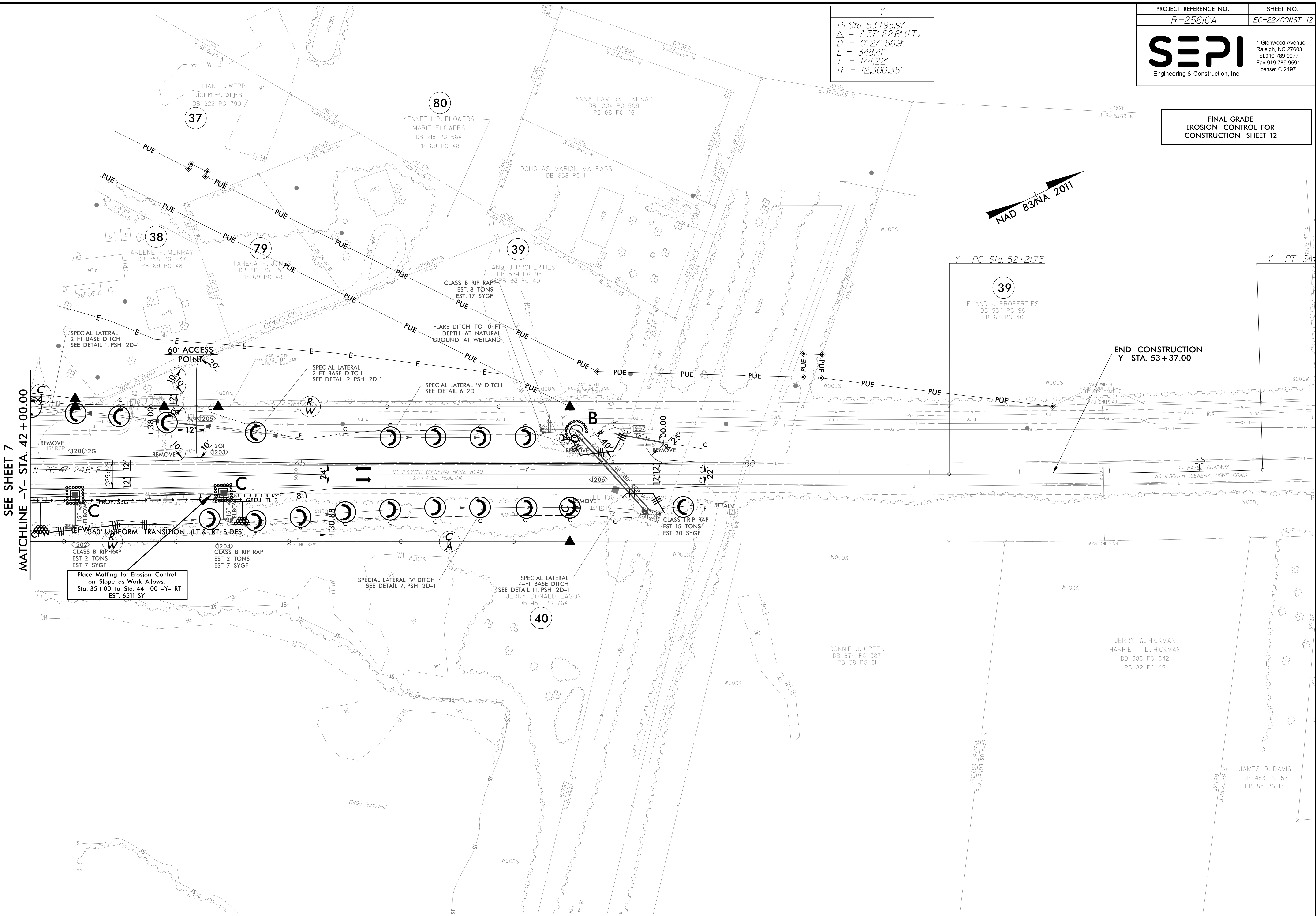
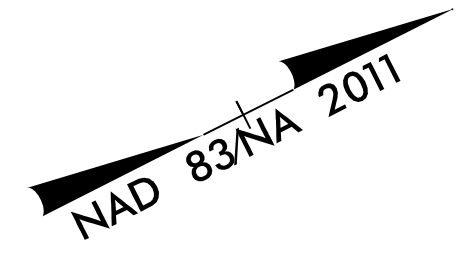


8.17/99  
C:\PROJECTS\2011\20110817\20110817.DWG

**FINAL GRADE  
EROSION CONTROL FOR  
CONSTRUCTION SHEET 12**

-Y-  
PI Sta 53+95.97  
 $\Delta = 1' 37" 22.6" (LT)$   
 $D = 0' 27" 56.9"$   
 $L = 348.4'$   
 $T = 174.22'$   
 $R = 12,300.35'$



SEE SHEET 7  
MATCHLINE -Y- STA. 42+00.00

Place Matting for Erosion Control  
on Slope as Work Allows.  
Sta. 35+00 to Sta. 44+00 -Y- RT  
EST. 6511 SY

END CONSTRUCTION  
-Y- STA. 53+37.00

FOR -Y- PROFILE SEE SHEET 28