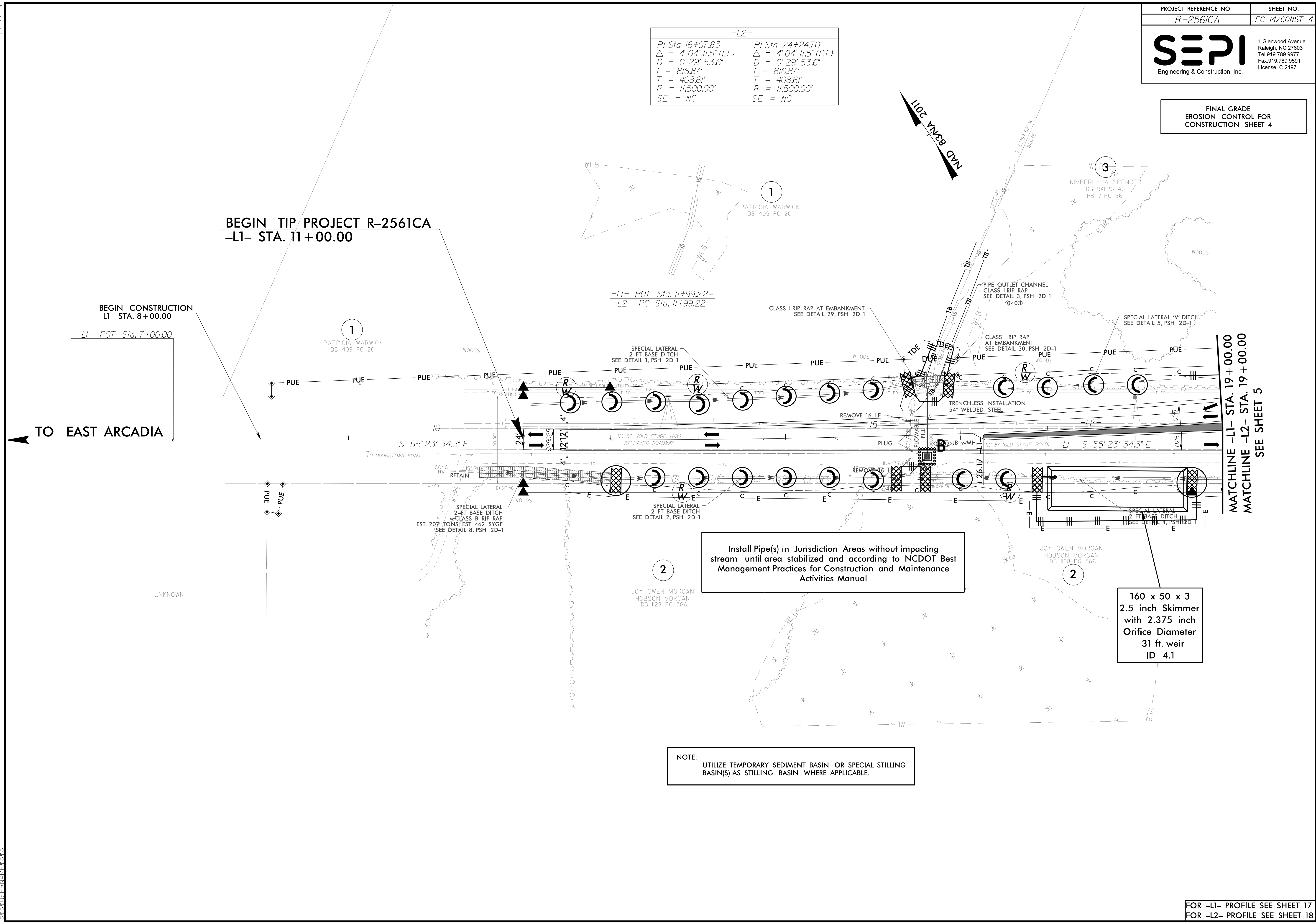


8/17/99

FINAL GRADE
EROSION CONTROL FOR
CONSTRUCTION SHEET 4

-L2-	
PI Sta 16+07.83	PI Sta 24+24.70
$\Delta = 4' 04" 11.5" (LT)$	$\Delta = 4' 04" 11.5" (RT)$
$D = 0' 29' 53.6"$	$D = 0' 29' 53.6"$
$L = 816.87'$	$L = 816.87'$
$T = 408.61'$	$T = 408.61'$
$R = 11,500.00'$	$R = 11,500.00'$
SE = NC	SE = NC



Install Pipe(s) in Jurisdiction Areas without impacting stream until area stabilized and according to NCDOT Best Management Practices for Construction and Maintenance Activities Manual

160 x 50 x 3
2.5 inch Skimmer
with 2.375 inch
Orifice Diameter
31 ft. weir
ID 4.1

NOTE:
UTILIZE TEMPORARY SEDIMENT BASIN OR SPECIAL STILLING BASIN(S) AS STILLING BASIN WHERE APPLICABLE.