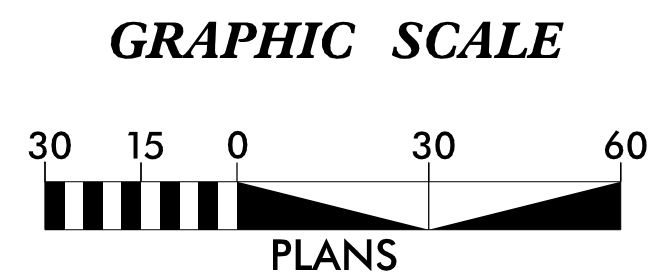
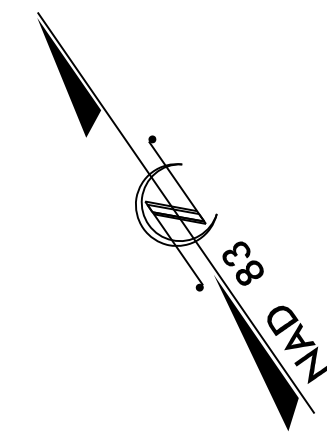


CULVERT CONSTRUCTION SEQUENCE STA. 27+87 -Y-

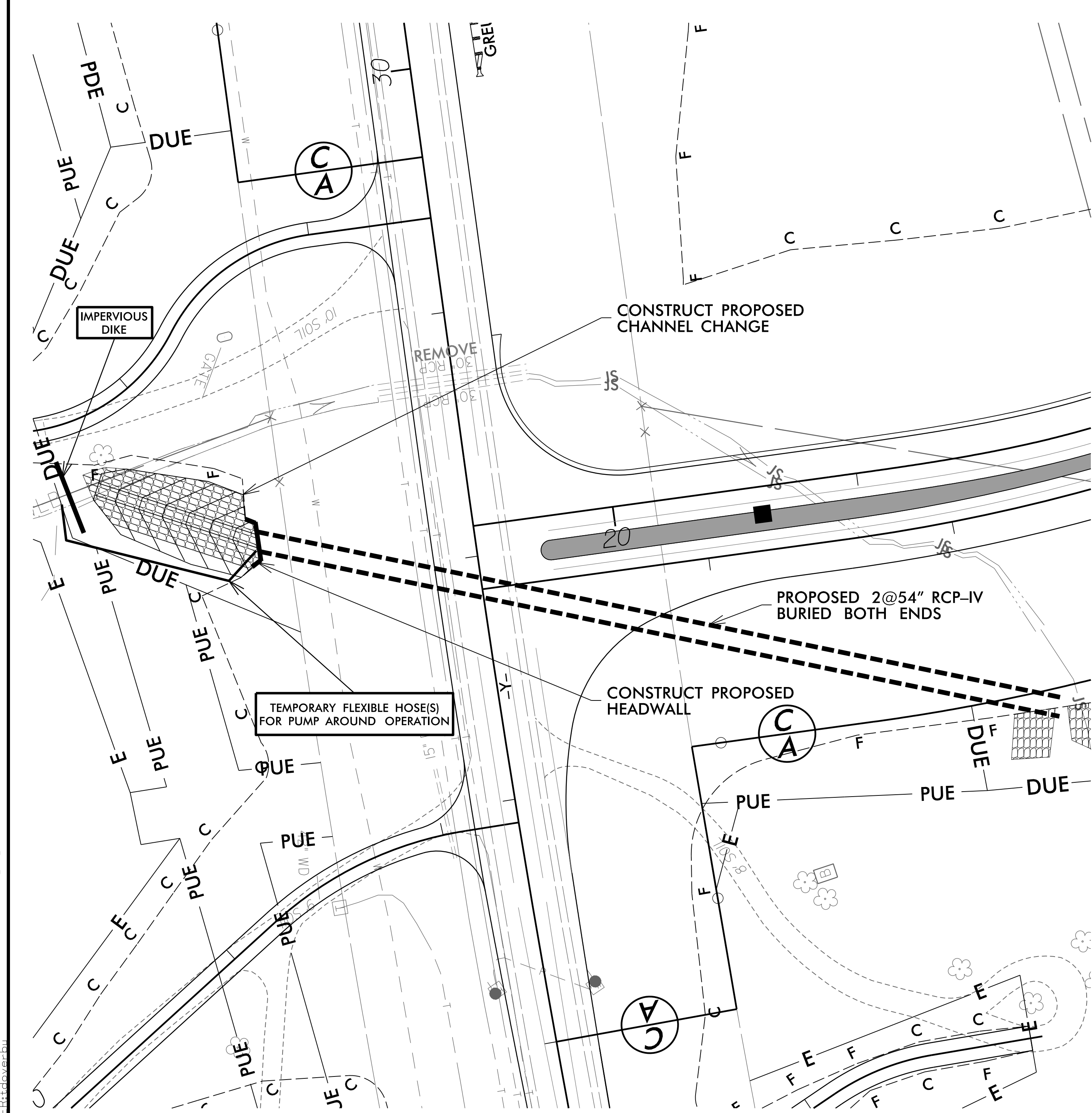
--- PIPE CONSTRUCTED IN PREVIOUS PHASE



PROJECT REFERENCE NO. R-2561CA	SHEET NO. EC-7D/CONST.7
<small>1 Glenwood Avenue Raleigh, NC 27603 Tel: 919.789.9977 Fax: 919.789.9591 License: C-2197</small>	

PHASE III

1. UTILIZE SPECIAL STILLING BASINS DURING CULVERT CONSTRUCTION AS DIRECTED BY ENGINEER.
2. COMPLETE NEW ROADWAY CONSTRUCTION.
3. ONCE NEW ROADWAY IS STABILIZED AND READY FOR TRAFFIC, CLOSE DETOUR AND SHIFT TRAFFIC ONTO FINAL GRADE OF NC-11 (-Y-).
4. INSTALL PUMP AROUND OPERATION FOR REMOVAL OF DETOUR AND CONSTRUCTION OF CHANNEL CHANGE AND UPSTREAM END OF CULVERT WITH HEADWALL.
5. REMOVE DETOUR PHASE 2@54" PIPES AND JUNCTION BOX.
6. INSTALL PROPOSED HEADWALL AT UPSTREAM END OF 2@54" PIPES AND CONSTRUCT CHANNEL CHANGE.
7. UPON FINAL STABILIZATION OF ALL DRAINAGE CHANNELS AND STRUCTURES, REMOVE PUMP AROUND OPERATION AND DIVERT WATER IN TO CHANNEL CHANGE. REMOVE SPECIAL STILLING BASINS.



12/16/2020
 R-2561CA_reu-EC-07D_Culvert_Phasing.dgn
 JES:bjd/verbu