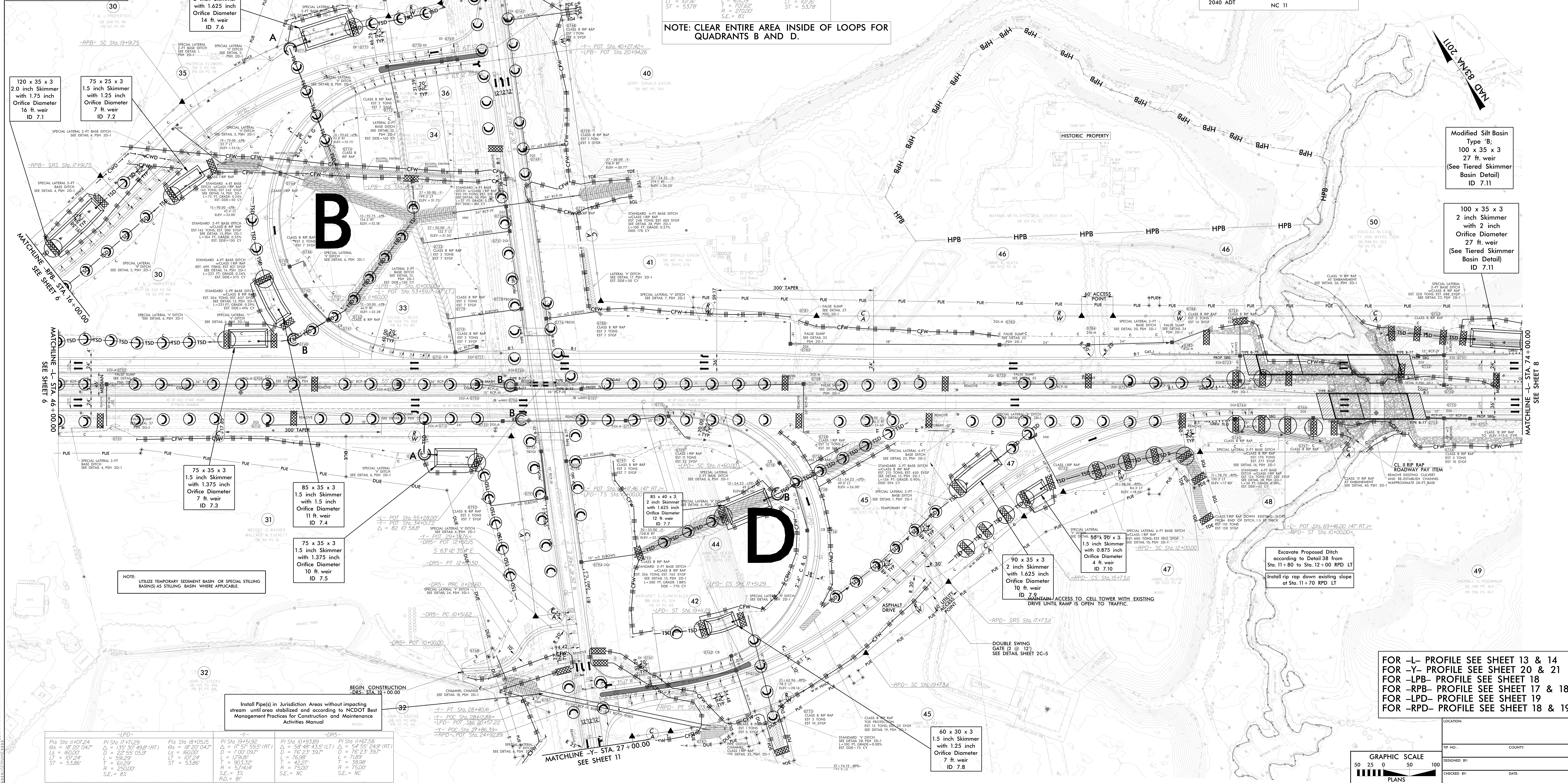
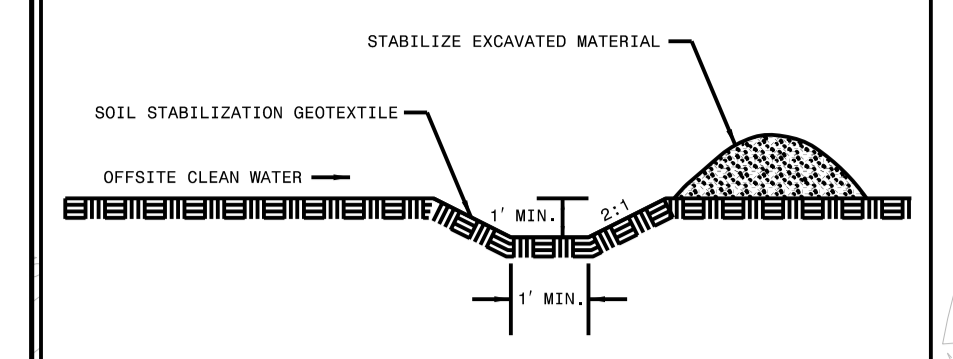
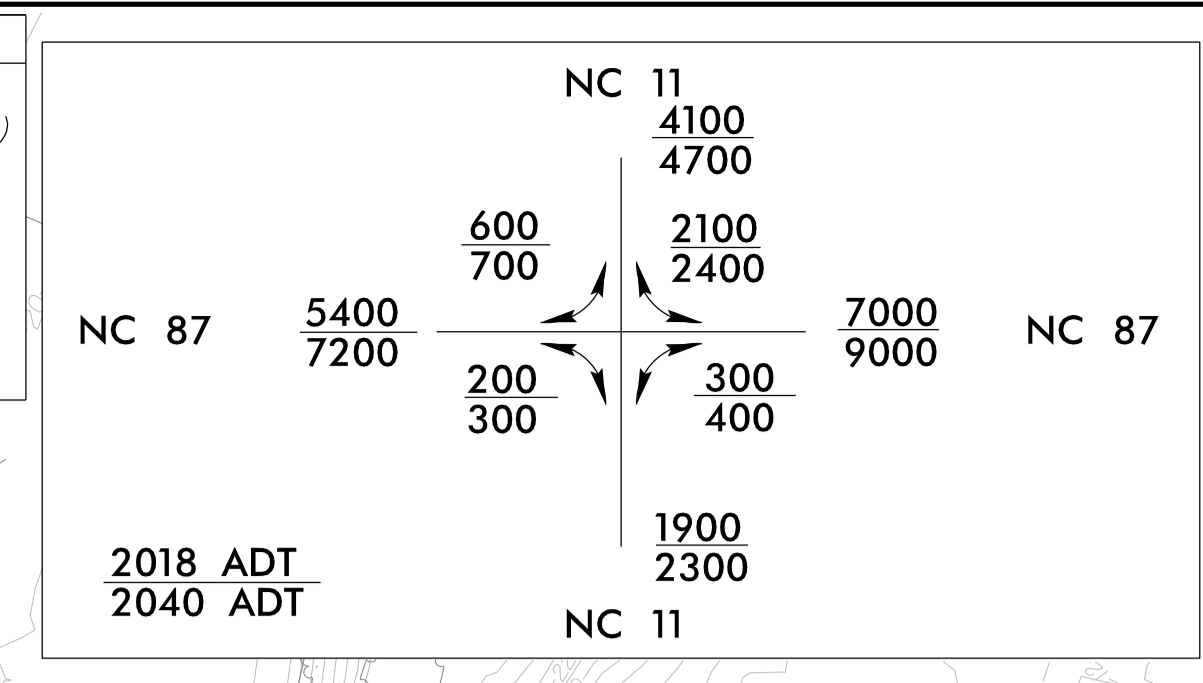


**CLEAN WATER DIVERSION**  
CWD - CWD - CWD  
(Not To Scale)



Pts Sta 11+33.46 Os = 7' 33' 31.7" Ls = 2000.00' LT = 133.46' ST = 66.78' S.E. = 8%	Pts Sta 14+00.35 Δ = 29' 36" 41.9" (LT) D = 131' 33" 31.7" L = 391.75' T = 200.35' R = 270.00' S.E. = 8%	Pts Sta 16+58.53 Os = 7' 33' 31.7" Ls = 2000.00' LT = 133.46' ST = 66.78' S.E. = 8%	Pts Sta 19+25.21 Os = 7' 33' 31.7" Ls = 2000.00' LT = 133.46' ST = 66.78' S.E. = 8%	Pts Sta 21+90.28 Δ = 29' 36" 41.9" (RT) D = 131' 33" 31.7" L = 391.75' T = 200.35' R = 270.00' S.E. = 8%	Pts Sta 11+33.46 Os = 7' 33' 31.7" Ls = 2000.00' LT = 133.46' ST = 66.78' S.E. = 8%	Pts Sta 13+90.42 Δ = 28' 12" 10.3" (RT) D = 7' 33' 31.7" L = 37.31' T = 133.46' R = 755.00' S.E. = 8%	Pts Sta 16+39.29 Os = 7' 33' 31.7" Ls = 2000.00' LT = 133.46' ST = 66.78' S.E. = 8%	Pts Sta 19+06.57 Os = 7' 33' 31.7" Ls = 2000.00' LT = 133.46' ST = 66.78' S.E. = 8%	Pts Sta 21+61.72 Δ = 27' 56" 41.2" (RT) D = 7' 33' 31.7" L = 36.97' T = 133.46' R = 755.00' S.E. = 8%
--	--	--	--	--	--	---	--	--	---

**NOTE: CLEAR ENTIRE AREA INSIDE OF LOOPS FOR QUADRANTS B AND D.**



PROJECT REFERENCE NO. **R-2561CA** SHEET NO. **EC-7/CONST 7**

**SEPI**  
Engineering & Construction, Inc.

11 Glenwood Avenue  
Raleigh, NC 27603  
Phone: 919.977.9977  
Fax: 919.977.9978  
License: C-1197

NOTE:  
PLACE TEMPORARY ROCK SEDIMENT DAMS TYPE - B  
AND TEMPORARY ROCK SILT CHECKS TYPE - A AT  
DRAINAGE OUTLETS.

120 x 35 x 3  
2.0 inch Skimmer  
with 1.75 inch  
Orifice Diameter  
16 ft. weir  
ID 7.1

75 x 25 x 3  
1.5 inch Skimmer  
with 1.25 inch  
Orifice Diameter  
14 ft. weir  
ID 7.2

95 x 45 x 3  
2 inch Skimmer  
with 1.625 inch  
Orifice Diameter  
14 ft. weir  
ID 7.6

75 x 35 x 3  
1.5 inch Skimmer  
with 1.375 inch  
Orifice Diameter  
7 ft. weir  
ID 7.3

85 x 35 x 3  
1.5 inch Skimmer  
with 1.5 inch  
Orifice Diameter  
11 ft. weir  
ID 7.4

75 x 35 x 3  
1.5 inch Skimmer  
with 1.375 inch  
Orifice Diameter  
10 ft. weir  
ID 7.5

85 x 40 x 3  
2 inch Skimmer  
with 1.625 inch  
Orifice Diameter  
12 ft. weir  
ID 7.7

90 x 35 x 3  
2 inch Skimmer  
with 1.625 inch  
Orifice Diameter  
10 ft. weir  
ID 7.8

50' x 20' x 3  
1.5 inch Skimmer  
with 0.875 inch  
Orifice Diameter  
ID 7.10

Excavate Proposed Ditch  
according to Detail 38 from  
Sta. 11+80 to Sta. 12+00 RPD LT  
Install rip rap down existing slope  
of Sta. 11+70 RPD LT

Modified Silt Basin  
Type 'B',  
100 x 35 x 3  
27 ft. weir  
(See Tiered Skimmer  
Basin Detail)  
ID 7.11

100 x 35 x 3  
2 inch Skimmer  
with 2 inch  
Orifice Diameter  
27 ft. weir  
(See Tiered Skimmer  
Basin Detail)  
ID 7.11

Pts Sta 11+07.24 Os = 18' 20' 04.7" Ls = 1600.00' LT = 107.24' ST = 53.28' S.E. = 8%	Pts Sta 17+11.29 Os = 135' 30' 43.9" (RT) D = 22' 55' 05.9" L = 591.29' T = 611.29' R = 250.00' S.E. = 8%	Pts Sta 18+04.515 Os = 18' 20' 04.7" Ls = 1600.00' LT = 107.24' ST = 53.28' S.E. = 8%	Pts Sta 19+15.92 Os = 17' 57' 53.5" (RT) D = 1' 00' 09.7" L = 1791.91' T = 42.27' R = 5744.44' S.E. = 8%	Pts Sta 19+33.89 Os = 58' 48' 43.5" (LT) D = 76' 23' 39.7" L = 76.98' T = 42.27' R = 750.00' S.E. = NC	Pts Sta 11+67.58 Os = 58' 48' 43.5" (LT) D = 54' 55' 24.9" (RT) D = 76' 23' 39.7" L = 71.89' T = 38.96' R = 750.00' S.E. = NC
---	---	--	--	--	--

FOR -L- PROFILE SEE SHEET 13 & 14  
FOR -Y- PROFILE SEE SHEET 20 & 21  
FOR -LPB- PROFILE SEE SHEET 18  
FOR -RBP- PROFILE SEE SHEET 17 & 18  
FOR -LPD- PROFILE SEE SHEET 19  
FOR -RPD- PROFILE SEE SHEET 18 & 19

GRAPHIC SCALE  
50 25 0 50 100  
PLANS

DESIGNED BY: \_\_\_\_\_ DATE: \_\_\_\_\_  
CHECKED BY: \_\_\_\_\_