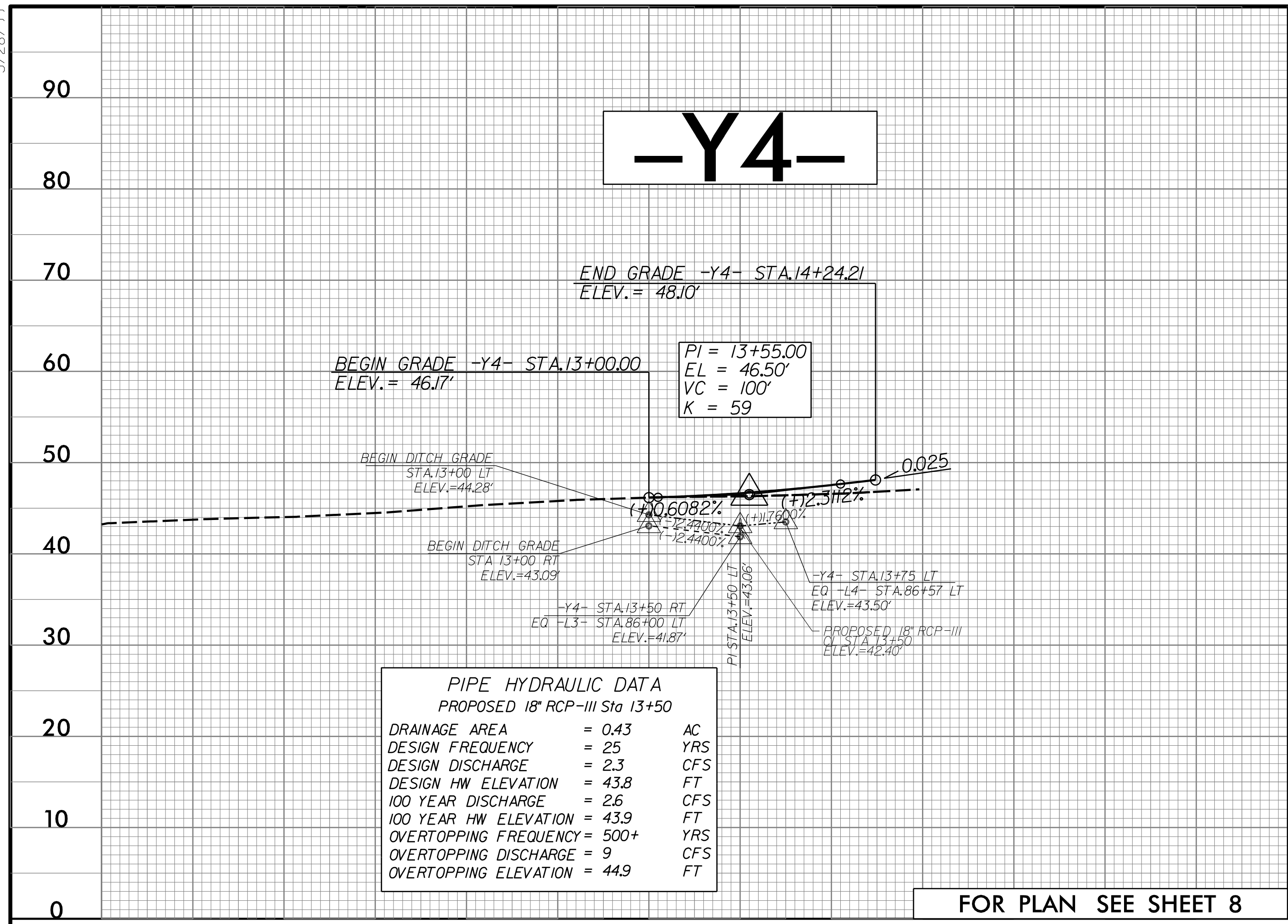


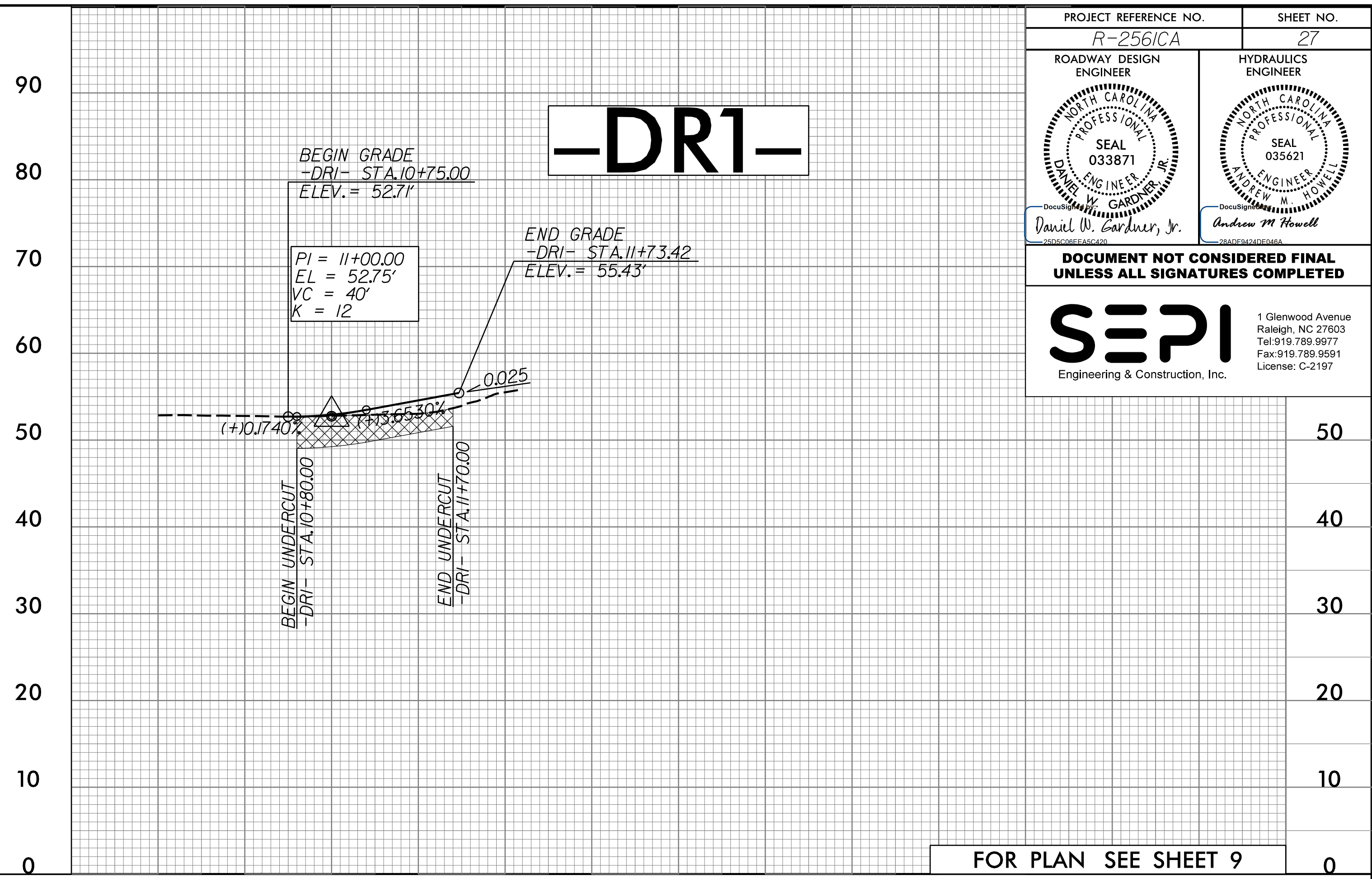
5/28/99

PROJECT REFERENCE NO. <b>R-256/CA</b>		SHEET NO. <b>27</b>	
ROADWAY DESIGN ENGINEER		HYDRAULICS ENGINEER	
DOCUMENT NOT CONSIDERED FINAL UNLESS ALL SIGNATURES COMPLETED			
		1 Glenwood Avenue Raleigh, NC 27603 Tel: 919.789.9977 Fax: 919.789.9591 License: C-2197	

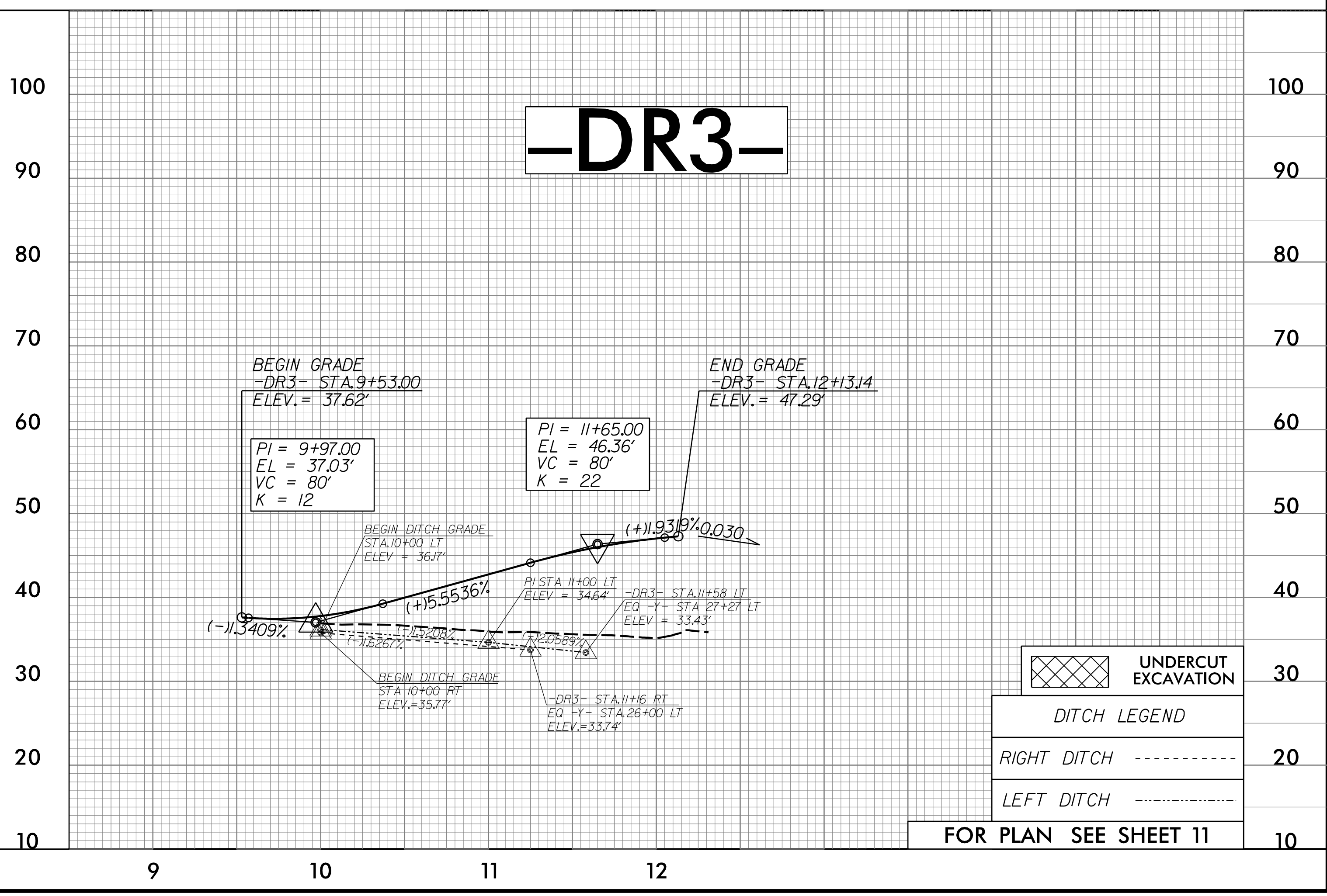
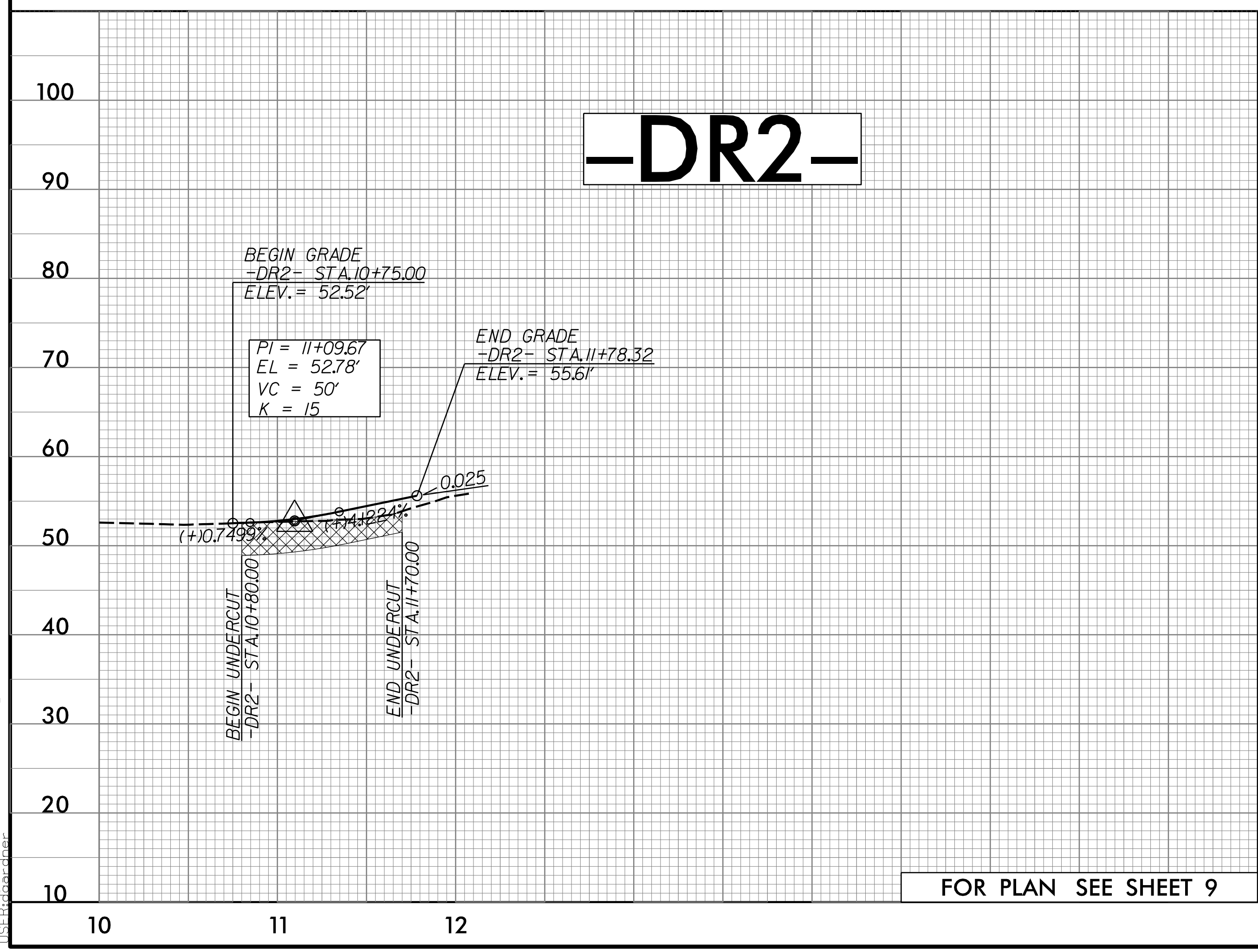


**PIPE HYDRAULIC DATA**  
PROPOSED 18" RCP-III Sta 13+50

DRAINAGE AREA	= 0.43	AC
DESIGN FREQUENCY	= 25	YRS
DESIGN DISCHARGE	= 2.3	CFS
DESIGN HW ELEVATION	= 43.8	FT
100 YEAR DISCHARGE	= 2.6	CFS
100 YEAR HW ELEVATION	= 43.9	FT
OVERTOPPING FREQUENCY	= 500+	YRS
OVERTOPPING DISCHARGE	= 9	CFS
OVERTOPPING ELEVATION	= 44.9	FT



8/26/2002 R-256/CA\_Rdy.pfl\_27.dgn



UNDERCUT EXCAVATION

**DITCH LEGEND**

RIGHT DITCH - - - - -

LEFT DITCH - - - - -