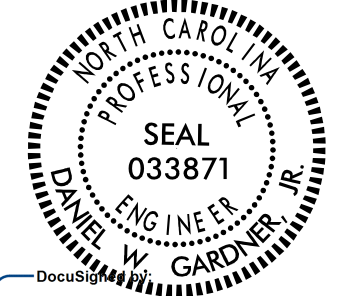
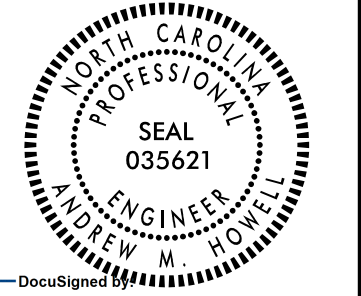

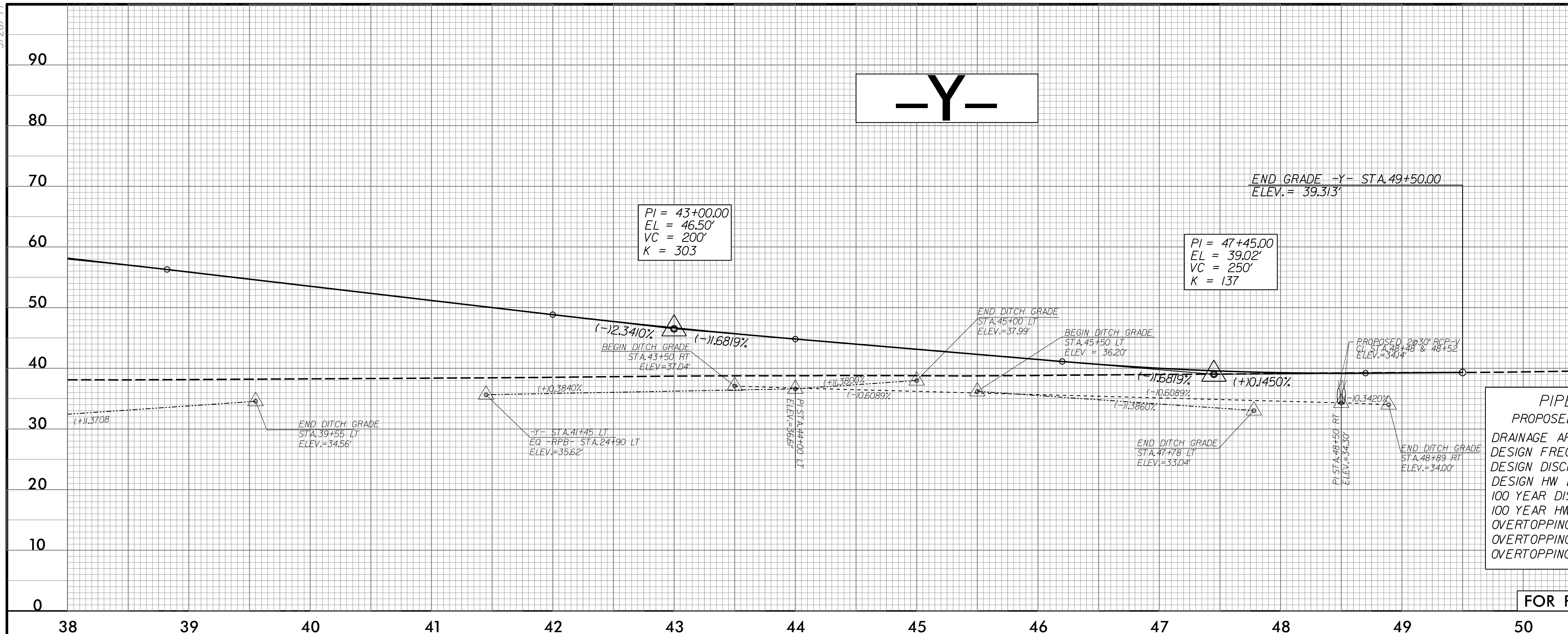


5/28/99

| | |
|--|--|
| PROJECT REFERENCE NO. R-256/CA | SHEET NO. 25 |
| ROADWAY DESIGN ENGINEER  | HYDRAULICS ENGINEER  |
| DOCUMENT NOT CONSIDERED FINAL UNLESS ALL SIGNATURES COMPLETED | |
|  | |
| 1 Glenwood Avenue Raleigh, NC 27603 Tel: 919.789.9977 Fax: 919.789.9591 License: C-2197 | |

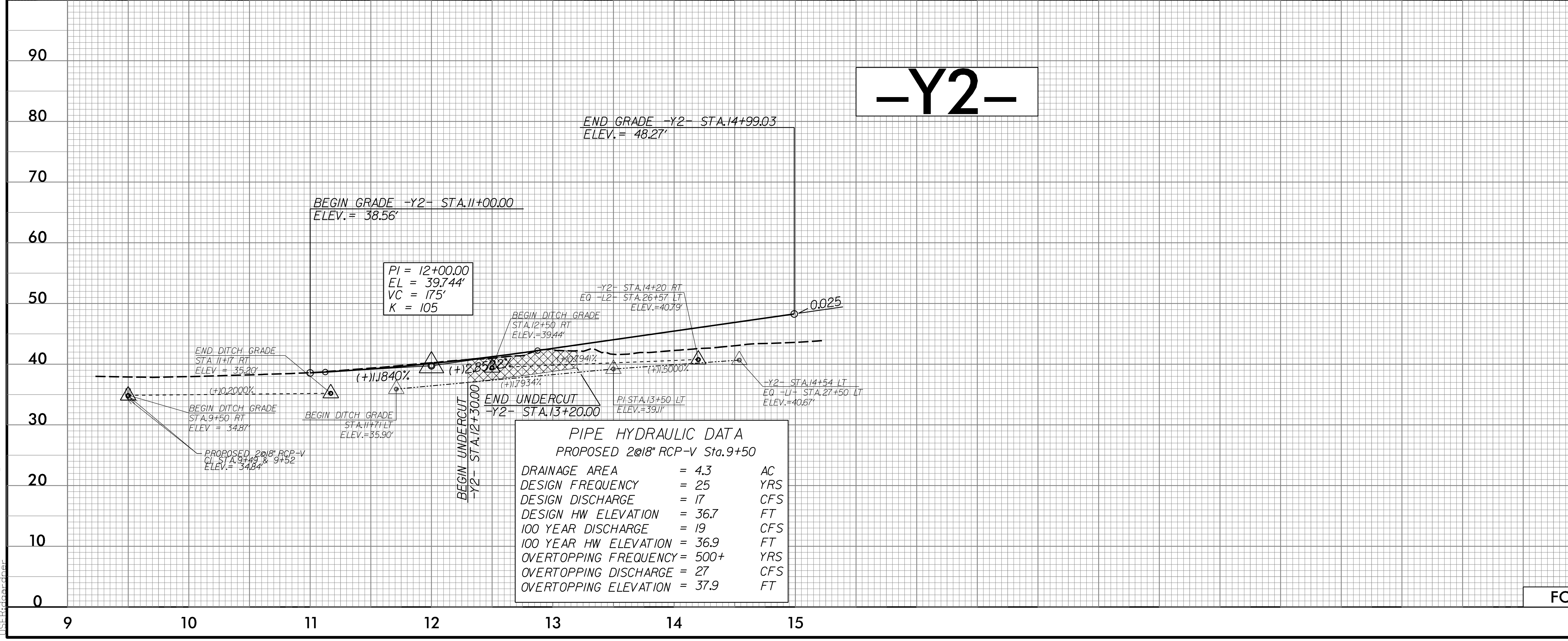


BM8 ELEVATION = 41.04'
N 230783 E 2219131
FROM BL STATION 50+00.12
N 49 02' 25.7" E DIST. 52.27'
BENCH TIE SET IN 16" PINE

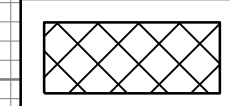


| PIPE HYDRAULIC DATA | | |
|------------------------------|--------|-----|
| PROPOSED 20" RCP-V Sta.48+50 | | |
| DRAINAGE AREA | = 40.4 | AC |
| DESIGN FREQUENCY | = 50 | YRS |
| DESIGN DISCHARGE | = 67 | CFS |
| DESIGN HW ELEVATION | = 37.8 | FT |
| 100 YEAR DISCHARGE | = 70 | CFS |
| 100 YEAR HW ELEVATION | = 37.9 | FT |
| OVERTOPPING FREQUENCY | = 500 | YRS |
| OVERTOPPING DISCHARGE | = 90 | CFS |
| OVERTOPPING ELEVATION | = 39.2 | FT |

FOR PLAN SEE SHEET 7 & 12

8/26/2007 R-256/CA_Rdy.pfl_25.dgn



| PIPE HYDRAULIC DATA | | |
|-----------------------------|--------|-----|
| PROPOSED 20" RCP-V Sta.9+50 | | |
| DRAINAGE AREA | = 4.3 | AC |
| DESIGN FREQUENCY | = 25 | YRS |
| DESIGN DISCHARGE | = 17 | CFS |
| DESIGN HW ELEVATION | = 36.7 | FT |
| 100 YEAR DISCHARGE | = 19 | CFS |
| 100 YEAR HW ELEVATION | = 36.9 | FT |
| OVERTOPPING FREQUENCY | = 500+ | YRS |
| OVERTOPPING DISCHARGE | = 27 | CFS |
| OVERTOPPING ELEVATION | = 37.9 | FT |

| | | |
|---|---------------------|----|
|  | UNDERCUT EXCAVATION | 20 |
| DITCH LEGEND | | |
|  | RIGHT DITCH | 10 |
|  | LEFT DITCH | 10 |

FOR PLAN SEE SHEET 5