

5/28/99

PROJECT REFERENCE NO. R-256/CA	SHEET NO. 24
ROADWAY DESIGN ENGINEER DANIEL W. GARDNER, JR.	HYDRAULICS ENGINEER ANDREW M. HOWELL
DOCUMENT NOT CONSIDERED FINAL UNLESS ALL SIGNATURES COMPLETED	
1 Glenwood Avenue Raleigh, NC 27603 Tel: 919.789.9977 Fax: 919.789.9591 License: C-2197	

BRIDGE HYDRAULIC DATA

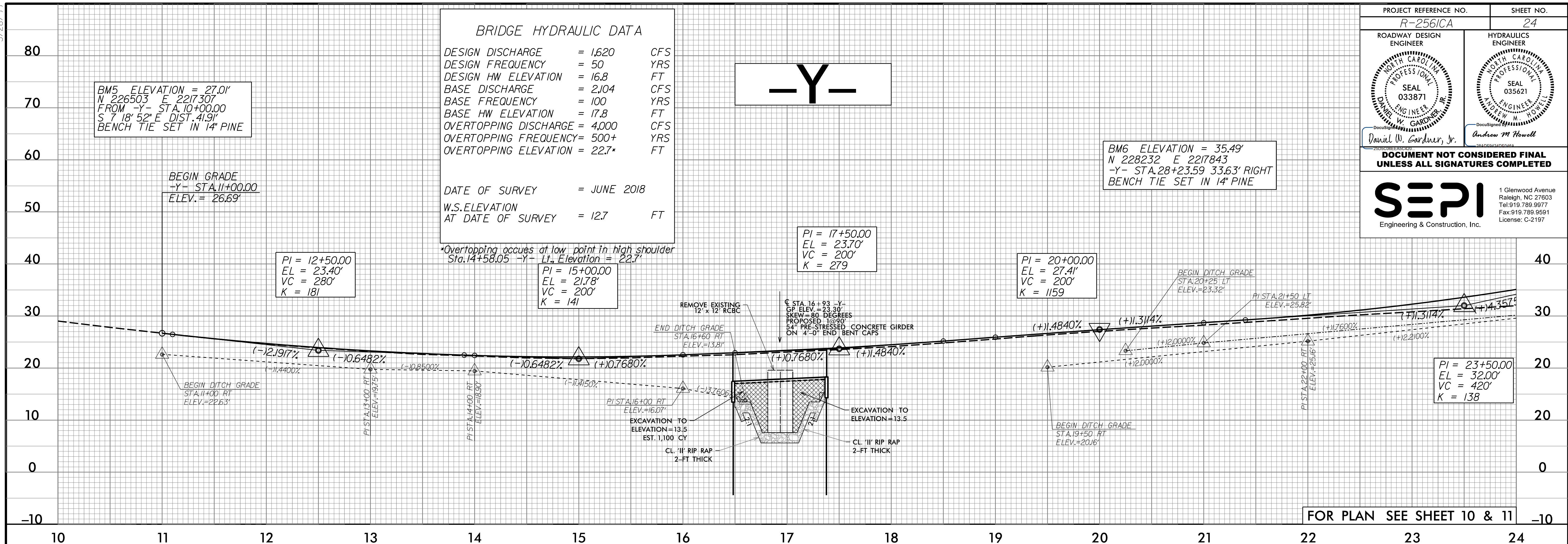
DESIGN DISCHARGE = 1,620 CFS
 DESIGN FREQUENCY = 50 YRS
 DESIGN HW ELEVATION = 16.8 FT
 BASE DISCHARGE = 2,104 CFS
 BASE FREQUENCY = 100 YRS
 BASE HW ELEVATION = 17.8 FT
 OVERTOPPING DISCHARGE = 4,000 CFS
 OVERTOPPING FREQUENCY = 500+ YRS
 OVERTOPPING ELEVATION = 22.7 FT

DATE OF SURVEY = JUNE 2018
 W.S. ELEVATION AT DATE OF SURVEY = 12.7 FT

*Overtopping occurs at low point in high shoulder Sta. 14+58.05 -Y- Lt. Elevation = 22.7'

BM5 ELEVATION = 27.0'
 N 226503 E 2217307
 FROM -Y- STA. 10+00.00
 S 7 18' 52" E DIST. 41.9'
 BENCH TIE SET IN 14" PINE

BM6 ELEVATION = 35.49'
 N 228232 E 2217843
 -Y- STA. 28+23.59 33.63' RIGHT
 BENCH TIE SET IN 14" PINE



FOR PLAN SEE SHEET 10 & 11

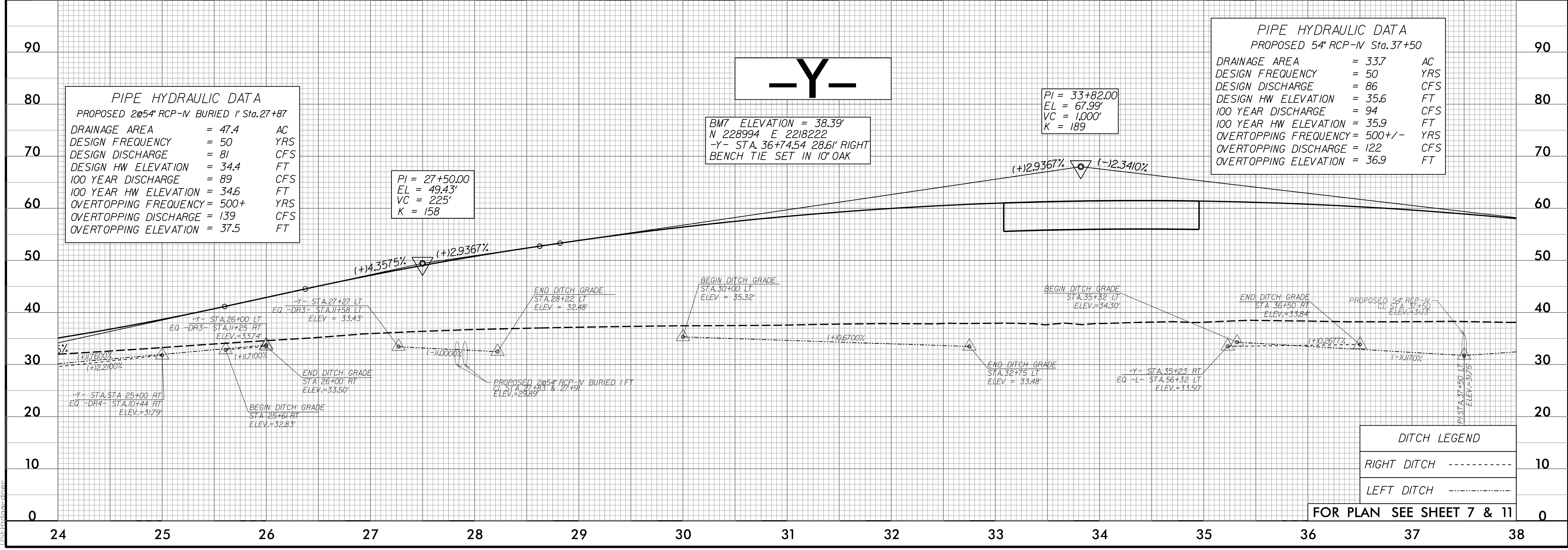
PIPE HYDRAULIC DATA
 PROPOSED 54" RCP-N Sta. 37+50

DRAINAGE AREA = 33.7 AC
 DESIGN FREQUENCY = 50 YRS
 DESIGN DISCHARGE = 86 CFS
 DESIGN HW ELEVATION = 35.6 FT
 100 YEAR DISCHARGE = 94 CFS
 100 YEAR HW ELEVATION = 35.9 FT
 OVERTOPPING FREQUENCY = 500+/- YRS
 OVERTOPPING DISCHARGE = 122 CFS
 OVERTOPPING ELEVATION = 36.9 FT

PIPE HYDRAULIC DATA
 PROPOSED 2054" RCP-N BURIED I Sta. 27+87

DRAINAGE AREA = 47.4 AC
 DESIGN FREQUENCY = 50 YRS
 DESIGN DISCHARGE = 81 CFS
 DESIGN HW ELEVATION = 34.4 FT
 100 YEAR DISCHARGE = 89 CFS
 100 YEAR HW ELEVATION = 34.6 FT
 OVERTOPPING FREQUENCY = 500+ YRS
 OVERTOPPING DISCHARGE = 139 CFS
 OVERTOPPING ELEVATION = 37.5 FT

BM7 ELEVATION = 38.39'
 N 228994 E 2218222
 -Y- STA. 36+74.54 28.61' RIGHT
 BENCH TIE SET IN 10" OAK



FOR PLAN SEE SHEET 7 & 11

DITCH LEGEND

RIGHT DITCH - - - - -

LEFT DITCH - - - - -

8/26/2002 R-256/CA-Rdy.pfl_24.dgn