

5/28/99

PROJECT REFERENCE NO. <b>R-2561CA</b>		SHEET NO. <b>22</b>	
ROADWAY DESIGN ENGINEER		HYDRAULICS ENGINEER	
Daniel W. Gardner, Jr.		Andrew M. Howell	
<b>DOCUMENT NOT CONSIDERED FINAL UNLESS ALL SIGNATURES COMPLETED</b>			
		1 Glenwood Avenue Raleigh, NC 27603 Tel: 919.789.9977 Fax: 919.789.9591 License: C-2197	

# -RPD-

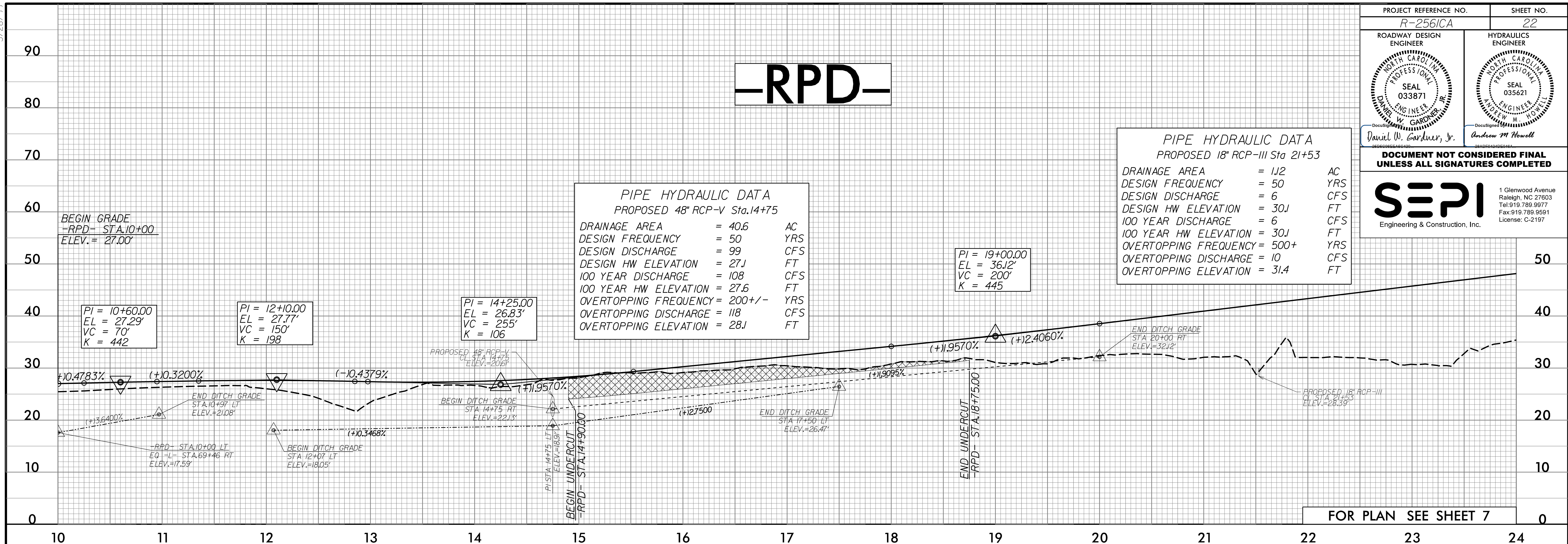
**PIPE HYDRAULIC DATA**  
PROPOSED 18" RCP-III Sta 21+53

DRAINAGE AREA	= 112	AC
DESIGN FREQUENCY	= 50	YRS
DESIGN DISCHARGE	= 6	CFS
DESIGN HW ELEVATION	= 30J	FT
100 YEAR DISCHARGE	= 6	CFS
100 YEAR HW ELEVATION	= 30J	FT
OVERTOPPING FREQUENCY	= 500+	YRS
OVERTOPPING DISCHARGE	= 10	CFS
OVERTOPPING ELEVATION	= 31.4	FT

**PIPE HYDRAULIC DATA**  
PROPOSED 48" RCP-V Sta.14+75

DRAINAGE AREA	= 40.6	AC
DESIGN FREQUENCY	= 50	YRS
DESIGN DISCHARGE	= 99	CFS
DESIGN HW ELEVATION	= 27.1	FT
100 YEAR DISCHARGE	= 108	CFS
100 YEAR HW ELEVATION	= 27.6	FT
OVERTOPPING FREQUENCY	= 200+/-	YRS
OVERTOPPING DISCHARGE	= 118	CFS
OVERTOPPING ELEVATION	= 28.1	FT

PI = 19+00.00  
EL = 36.12'  
VC = 200'  
K = 445



FOR PLAN SEE SHEET 7

# -RPD-

	UNDERCUT EXCAVATION	20
DITCH LEGEND		
	RIGHT DITCH	10
	LEFT DITCH	10

FOR PLAN SEE SHEET 7

8/26/2007 R-2561CA\_Rdy.pfl\_22.dgn