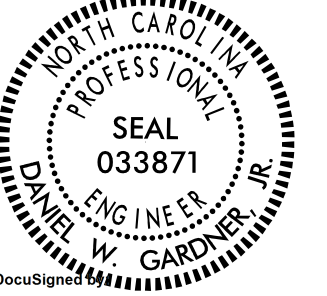
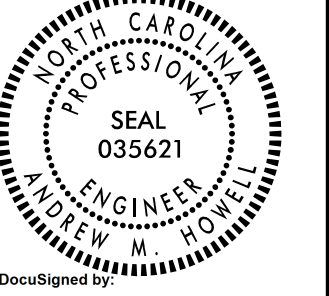


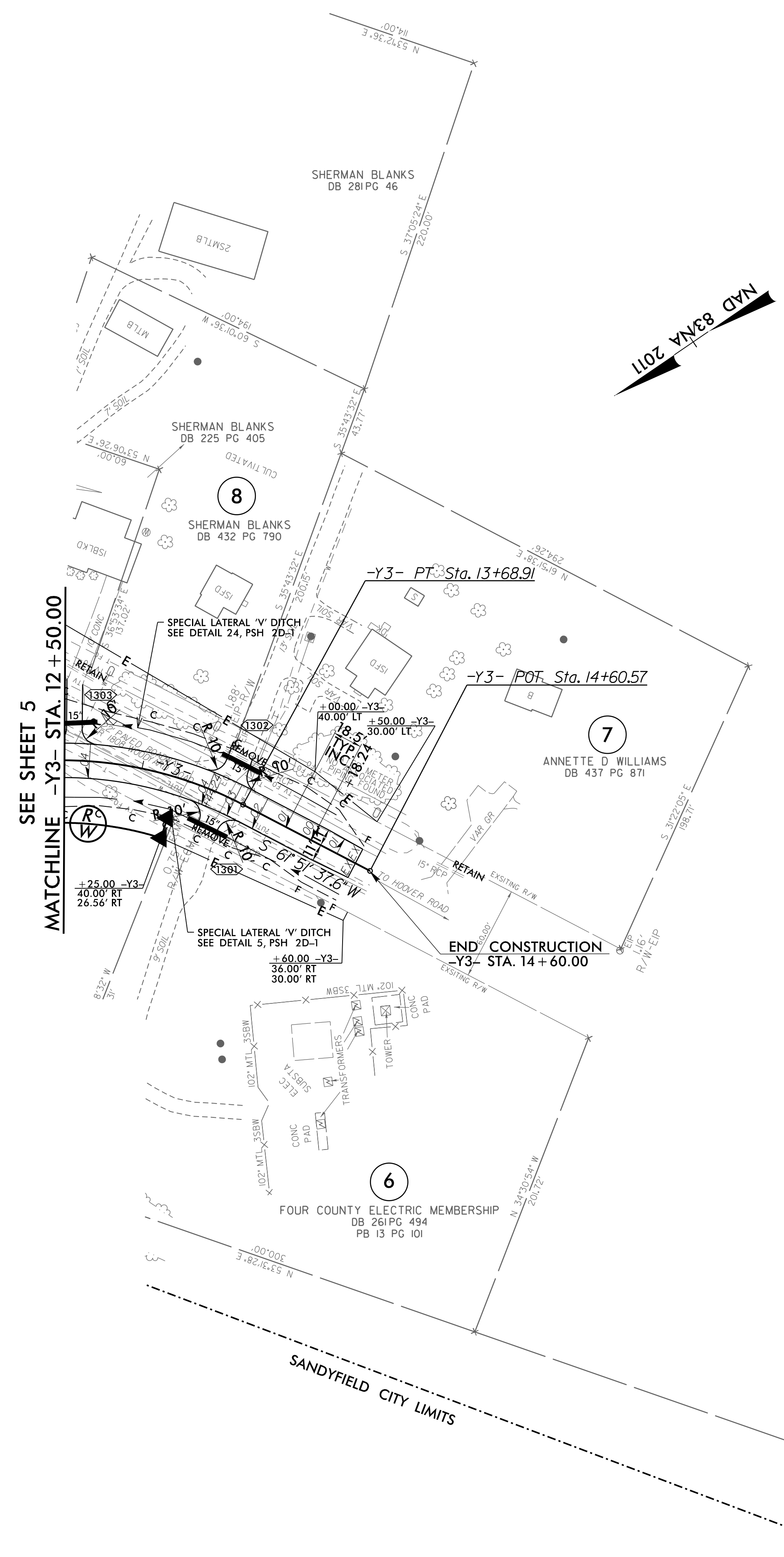
8/17/99

SEPI
Engineering & Construction, Inc.

1 Glenwood Avenue
Raleigh, NC 27603
Tel: 919.789.9977
Fax: 919.789.9591
License: C-2197

PROJECT REFERENCE NO. <i>R-2561CA</i>	SHEET NO. <i>13</i>
RW SHEET NO.	
ROADWAY DESIGN ENGINEER	HYDRAULICS ENGINEER
 Daniel W. Gardner, Jr.	 Andrew M. Howell
DOCUMENT NOT CONSIDERED FINAL UNLESS ALL SIGNATURES COMPLETED	

-Y3-	
PI Sta 10+95.26	PI Sta 12+70.29
$\Delta = 2^\circ 01' 15.4" (LT)$	$\Delta = 48^\circ 16' 27.3" (RT)$
$D = 22^\circ 55' 05.9"$	$D = 22^\circ 55' 05.9"$
$L = 91.72'$	$L = 210.64'$
$T = 46.38'$	$T = 112.02'$
$R = 250.00'$	$R = 250.00'$
SE = SEE PLANS	SE = SEE PLANS



8/26/2004 R-2561CA_Rdy_psh_13.dgn
11:51:40 am

SEE SHEET 26 FOR -Y3- PROFILE
SEE SHEET 2D-1 FOR DRAINAGE DITCH DETAILS