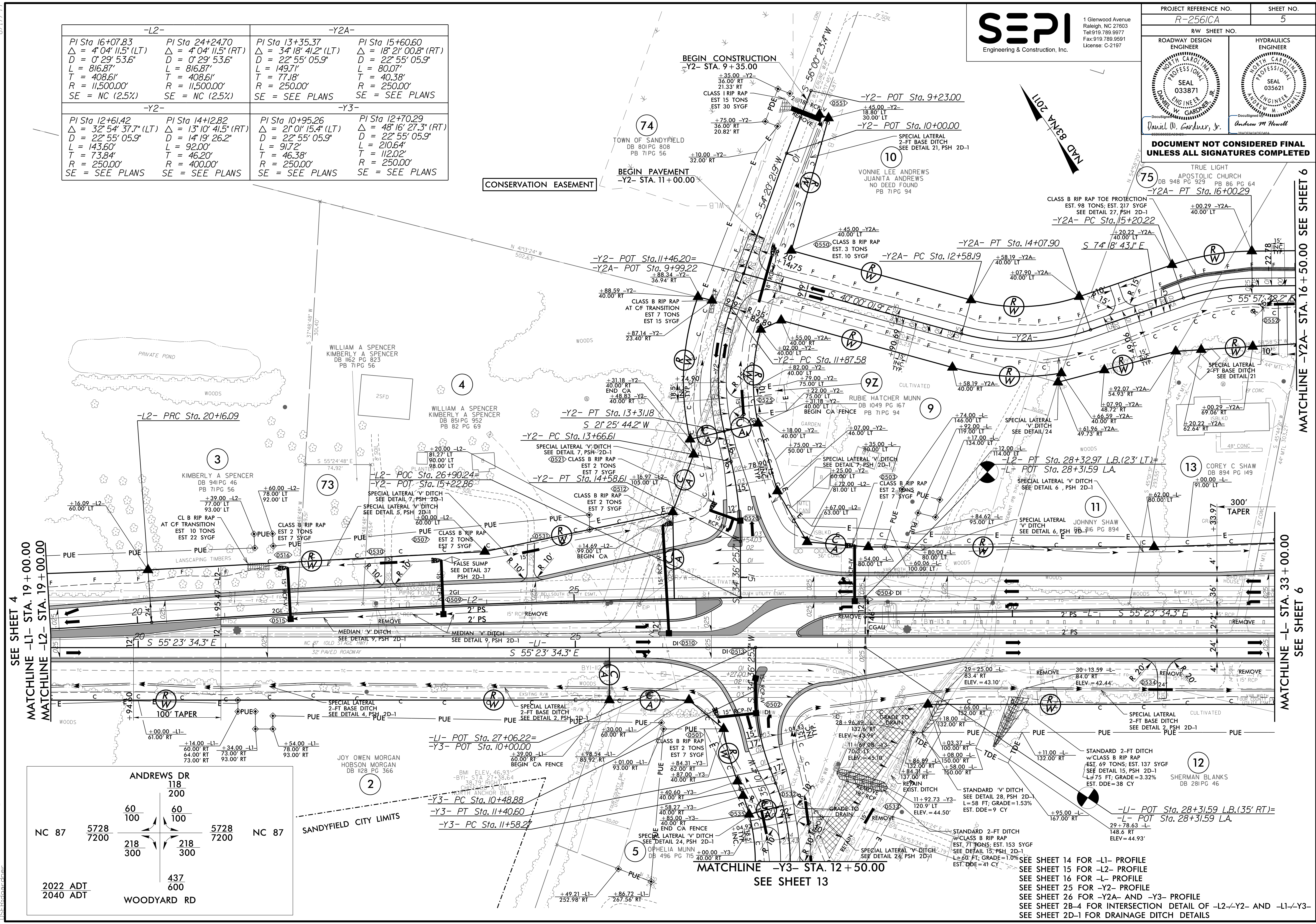




|                                   |  |                     |  |
|-----------------------------------|--|---------------------|--|
| PROJECT REFERENCE NO.<br>R-2561CA |  | SHEET NO.<br>5      |  |
| ROADWAY DESIGN ENGINEER           |  | HYDRAULICS ENGINEER |  |
|                                   |  |                     |  |
| Daniel W. Gardner, Jr.            |  | Andrew M. Howell    |  |

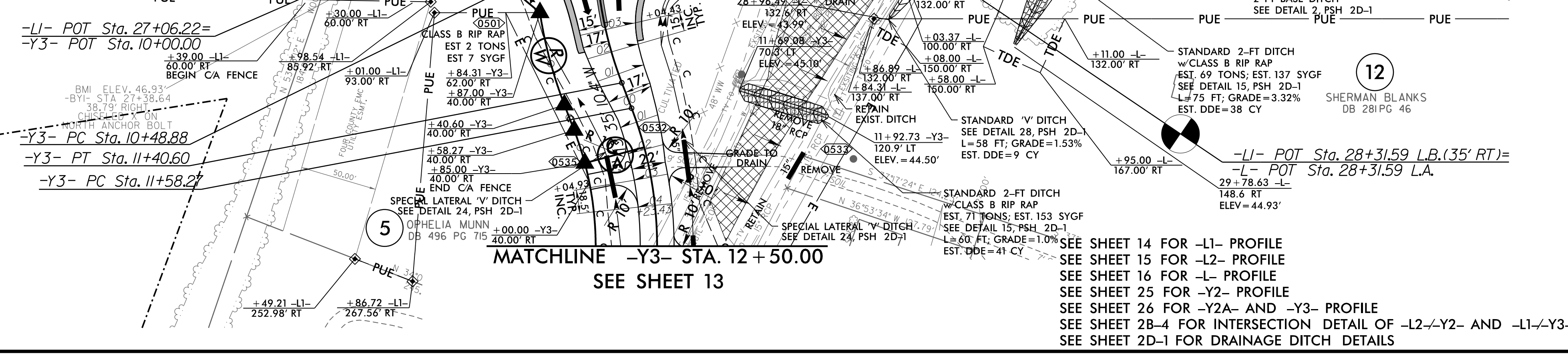
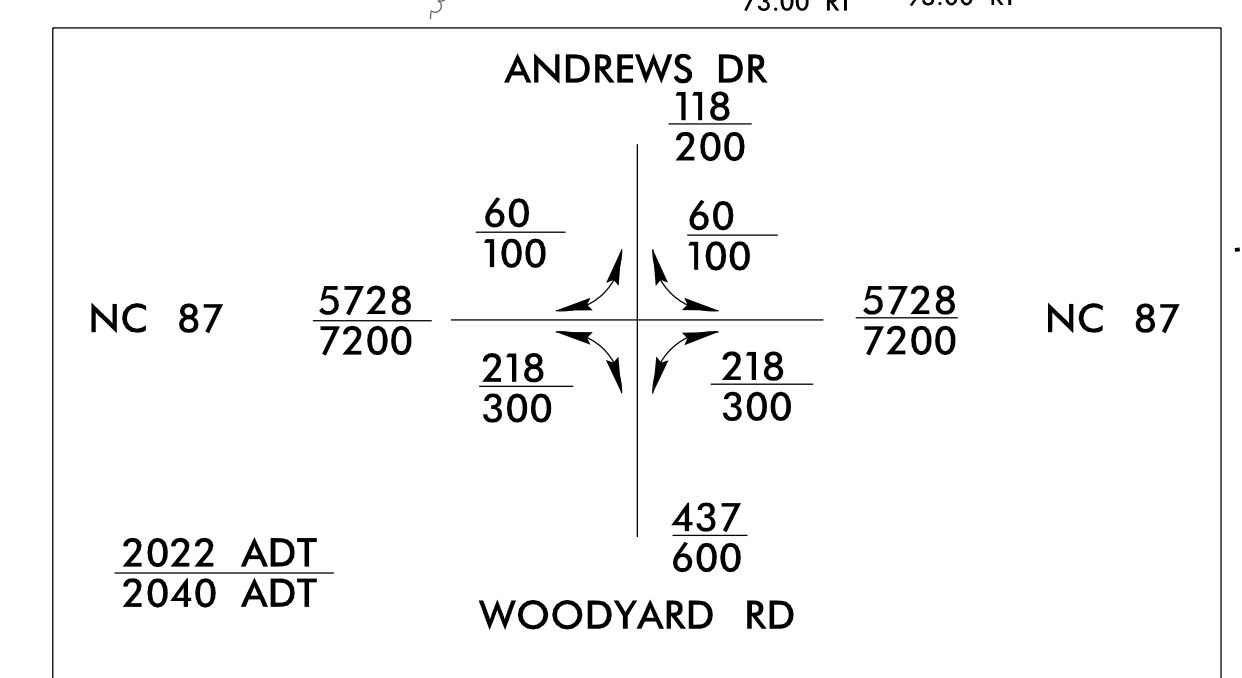
**DOCUMENT NOT CONSIDERED FINAL  
UNLESS ALL SIGNATURES COMPLETED**

|  |  |  |   |
|--|--|--|---|
| -L2-   |  | -Y2A-  |   |
| PI Sta 16+07.83<br>Δ = 4° 04' 11.5" (LT)<br>D = 0° 29' 53.6"<br>L = 816.87'<br>T = 408.61'<br>R = 11,500.00'<br>SE = NC (2.5%) | PI Sta 24+24.70<br>Δ = 4° 04' 11.5" (RT)<br>D = 0° 29' 53.6"<br>L = 816.87'<br>T = 408.61'<br>R = 11,500.00'<br>SE = NC (2.5%) | PI Sta 13+35.37<br>Δ = 34° 18' 41.2" (LT)<br>D = 22° 55' 05.9"<br>L = 149.71'<br>T = 77.18'<br>R = 250.00'<br>SE = SEE PLANS | PI Sta 15+60.60<br>Δ = 18° 21' 00.8" (RT)<br>D = 22° 55' 05.9"<br>L = 80.07'<br>T = 40.38'<br>R = 250.00'<br>SE = SEE PLANS   |
| -Y2-   |  | -Y3-   |   |
| PI Sta 12+61.42<br>Δ = 32° 54' 37.7" (LT)<br>D = 22° 55' 05.9"<br>L = 143.60'<br>T = 73.84'<br>R = 250.00'<br>SE = SEE PLANS   | PI Sta 14+12.82<br>Δ = 13° 10' 41.5" (RT)<br>D = 14° 19' 26.2"<br>L = 92.00'<br>T = 46.20'<br>R = 400.00'<br>SE = SEE PLANS    | PI Sta 10+95.26<br>Δ = 21° 01' 15.4" (LT)<br>D = 22° 55' 05.9"<br>L = 91.72'<br>T = 46.38'<br>R = 250.00'<br>SE = SEE PLANS  | PI Sta 12+70.29<br>Δ = 48° 16' 27.3" (RT)<br>D = 22° 55' 05.9"<br>L = 210.64'<br>T = 112.02'<br>R = 250.00'<br>SE = SEE PLANS |



SEE SHEET 4  
MATCHLINE -L1- STA. 19+00.00  
MATCHLINE -L2- STA. 19+00.00

MATCHLINE -Y2A- STA. 16+50.00 SEE SHEET 6  
MATCHLINE -L- STA. 33+00.00 SEE SHEET 6



SEE SHEET 14 FOR -L1- PROFILE  
SEE SHEET 15 FOR -L2- PROFILE  
SEE SHEET 16 FOR -L- PROFILE  
SEE SHEET 25 FOR -Y2- PROFILE  
SEE SHEET 26 FOR -Y2A- AND -Y3- PROFILE  
SEE SHEET 2B-4 FOR INTERSECTION DETAIL OF -L2--Y2- AND -L1--Y3-  
SEE SHEET 2D-1 FOR DRAINAGE DITCH DETAILS

8/17/2022 10:42:25 AM R:\Projects\2561CA\_Rdy\_psh\_5.dwg