

8/17/99
8/25/2002
R-2561CA_Rdy_psh_2B-2.dgn
11:58:40 AM

SEPI
Engineering & Construction, Inc.
1 Glenwood Avenue
Raleigh, NC 27603
Tel: 919.789.9977
Fax: 919.789.9591
License: C-2197

PROJECT REFERENCE NO. R-2561CA	SHEET NO. 2B-2
RW SHEET NO.	
ROADWAY DESIGN ENGINEER DANIEL W. GARDNER, JR. SEAL 033871 NORTH CAROLINA PROFESSIONAL ENGINEER	HYDRAULICS ENGINEER ANDREW M. HOWELL SEAL 035621 NORTH CAROLINA PROFESSIONAL ENGINEER
DOCUMENT NOT CONSIDERED FINAL UNLESS ALL SIGNATURES COMPLETED	

-YDET-
PI Sta 39+36.43
 $\Delta = 6' 28' 45.7" (RT)$
 $D = 1' 58' 32.6"$
 $L = 327.95'$
 $T = 164.15'$
 $R = 2,900.00'$
 $S.E. = 3\%$
 $R.O. = 57'$

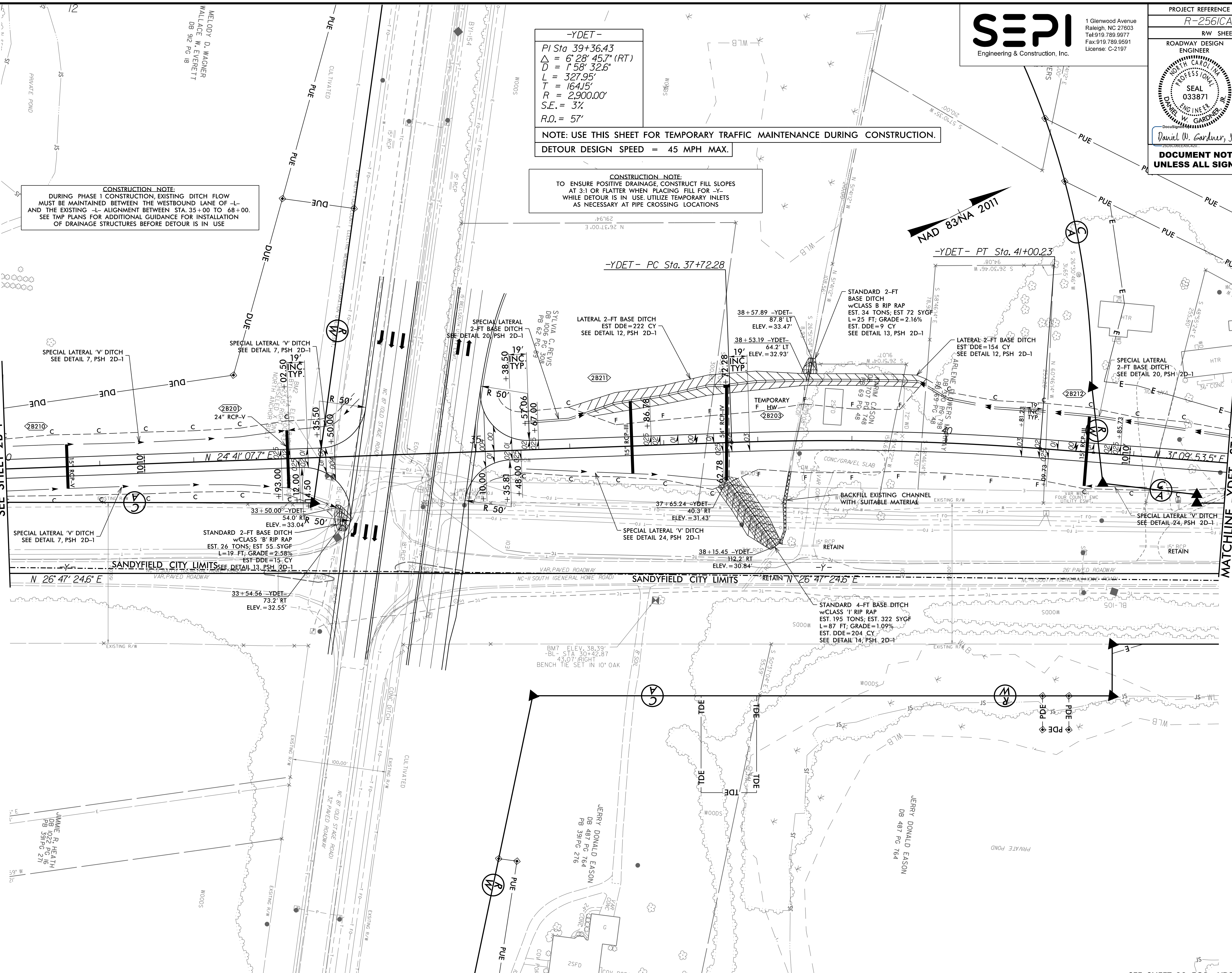
NOTE: USE THIS SHEET FOR TEMPORARY TRAFFIC MAINTENANCE DURING CONSTRUCTION.
DETOUR DESIGN SPEED = 45 MPH MAX.

CONSTRUCTION NOTE:
TO ENSURE POSITIVE DRAINAGE, CONSTRUCT FILL SLOPES AT 3:1 OR FLATTER WHEN PLACING FILL FOR -Y- WHILE DETOUR IS IN USE. UTILIZE TEMPORARY INLETS AS NECESSARY AT PIPE CROSSING LOCATIONS

CONSTRUCTION NOTE:
DURING PHASE I CONSTRUCTION, EXISTING DITCH FLOW MUST BE MAINTAINED BETWEEN THE WESTBOUND LANE OF -L- AND THE EXISTING -L- ALIGNMENT BETWEEN STA 35+00 TO 68+00. SEE TMP PLANS FOR ADDITIONAL GUIDANCE FOR INSTALLATION OF DRAINAGE STRUCTURES BEFORE DETOUR IS IN USE

MATCHLINE -YDET- STA. 30+00.00
SEE SHEET 2B-1

MATCHLINE -YDET- STA. 43+00.00
SEE SHEET 2B-3



SEE SHEET 29 FOR -YDET- PROFILE
SEE SHEET 2D-1 FOR DRAINAGE DITCH DETAILS