

8/17/99



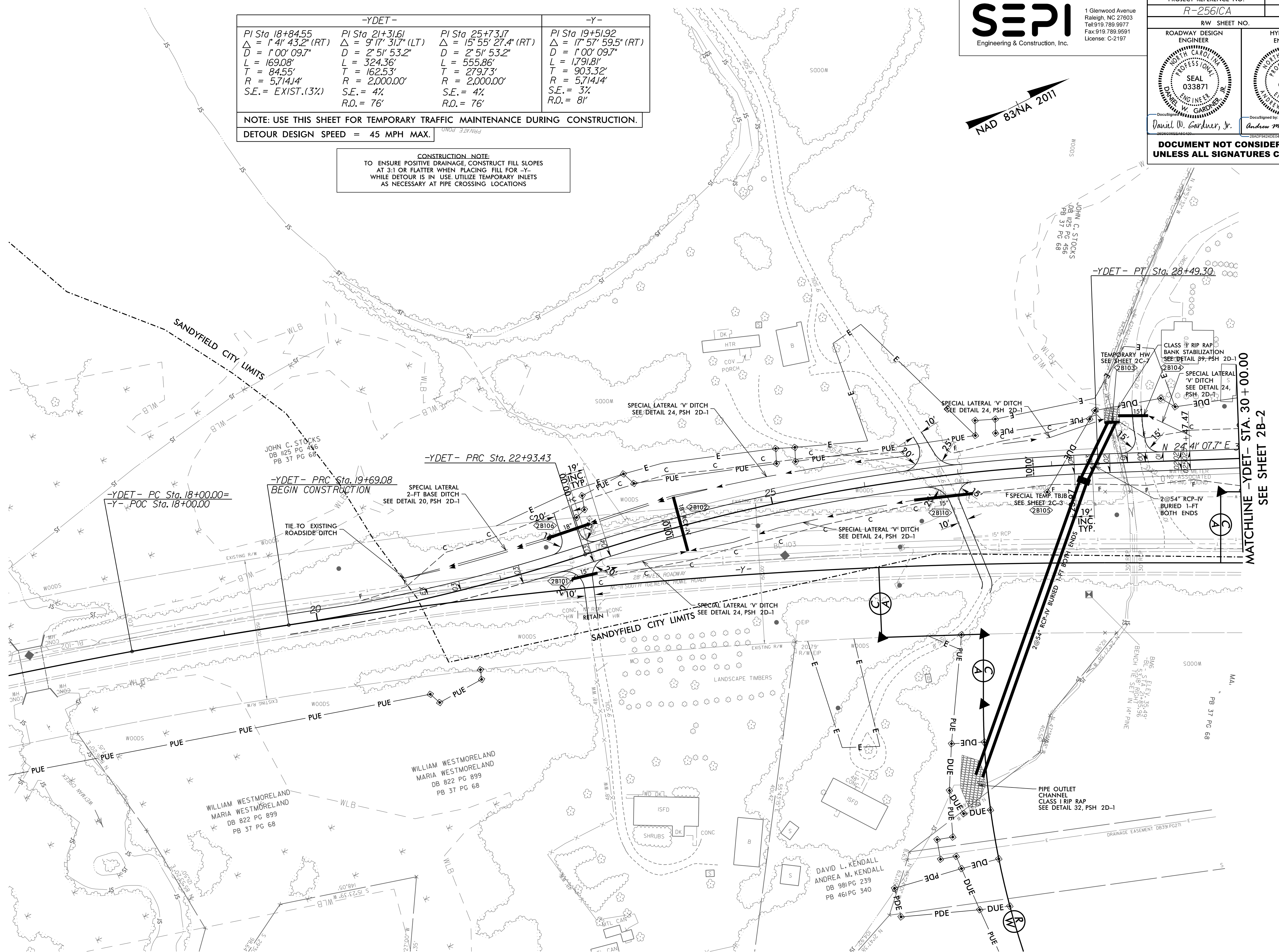
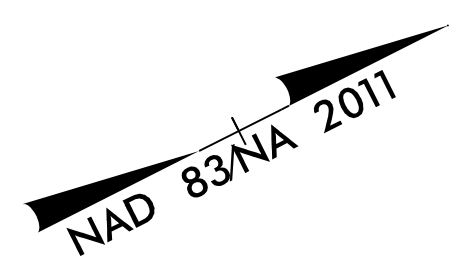
1 Glenwood Avenue
Raleigh, NC 27603
Tel: 919.789.9977
Fax: 919.789.9591
License: C-2197

| | | | |
|--|--|--------------------------|--|
| PROJECT REFERENCE NO. R-2561CA | | SHEET NO. 2B-1 | |
| ROADWAY DESIGN ENGINEER | | HYDRAULICS ENGINEER | |
| Daniel W. Gardner, Jr. | | Andrew M. Howell | |
| DOCUMENT NOT CONSIDERED FINAL UNLESS ALL SIGNATURES COMPLETED | | | |

| -YDET- | | | -Y- |
|-------------------------------|-------------------------------|--------------------------------|--------------------------------|
| PI Sta. 18+84.55 | PI Sta. 21+31.61 | PI Sta. 25+73.17 | PI Sta. 19+51.92 |
| $\Delta = 1' 41' 43.2''$ (RT) | $\Delta = 9' 17' 31.7''$ (LT) | $\Delta = 15' 55' 27.4''$ (RT) | $\Delta = 17' 57' 59.5''$ (RT) |
| D = 1'00' 09.7" | D = 2' 51' 53.2" | D = 2' 51' 53.2" | D = 1'00' 09.7" |
| L = 169.08' | L = 324.36' | L = 555.86' | L = 1,791.81' |
| T = 84.55' | T = 162.53' | T = 279.73' | T = 903.32' |
| R = 5,714.14' | R = 2,000.00' | R = 2,000.00' | R = 5,714.14' |
| S.E. = EXIST. (3%) | S.E. = 4% | S.E. = 4% | S.E. = 3% |
| | R.O. = 76' | R.O. = 76' | R.O. = 81' |

NOTE: USE THIS SHEET FOR TEMPORARY TRAFFIC MAINTENANCE DURING CONSTRUCTION.
DETOUR DESIGN SPEED = 45 MPH MAX.

CONSTRUCTION NOTE:
TO ENSURE POSITIVE DRAINAGE, CONSTRUCT FILL SLOPES AT 3:1 OR FLATTER WHEN PLACING FILL FOR -Y- WHILE DETOUR IS IN USE. UTILIZE TEMPORARY INLETS AS NECESSARY AT PIPE CROSSING LOCATIONS.



MATCHLINE -YDET- STA. 30+00.00
SEE SHEET 2B-2

SEE SHEET 29 FOR -YDET- PROFILE
SEE SHEET 2D-1 FOR DRAINAGE DITCH DETAILS

8/25/2002 R-2561CA_Rdy_psh_2B-1.dgn
11:51:40 AM