

11/21/2022 10:19:01 AM P:\Raleigh\Projects\2018\Division 13 (SEA)\B-5869 (Burke 99)\Structures\Drawings\2\Final\2\B5869_SMU_EI_110099(2).dgn

NOTES:

STIRRUPS AND "U" BARS IN CAP MAY BE SHIFTED AS NECESSARY TO CLEAR ANCHOR BOLTS.

FOR SECTION A-A, SEE SHEET 5 OF 5.

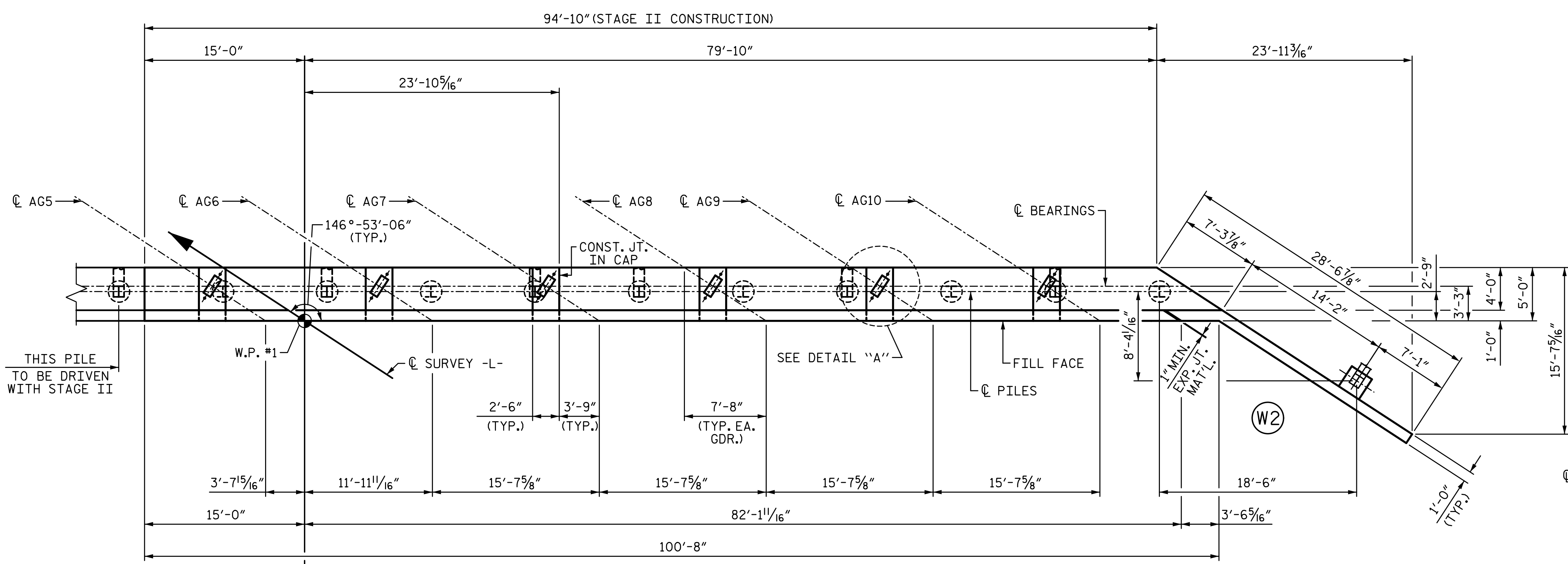
FOR LOCATION OF ELEVATIONS BETWEEN BRIDGE SEAT BUILD-UPS SEE SECTION A-A, SEE SHEET 5 OF 5.

BACKWALL SHALL BE PLACED BEFORE APPLYING THE EPOXY PROTECTIVE COATING.

THE TOP SURFACE AREAS OF THE END BENT CAPS SHALL BE CURED IN ACCORDANCE WITH THE STANDARD SPECIFICATIONS EXPECT THE MEMBRANE CURING COMPOUND METHOD SHALL NOT BE USED.

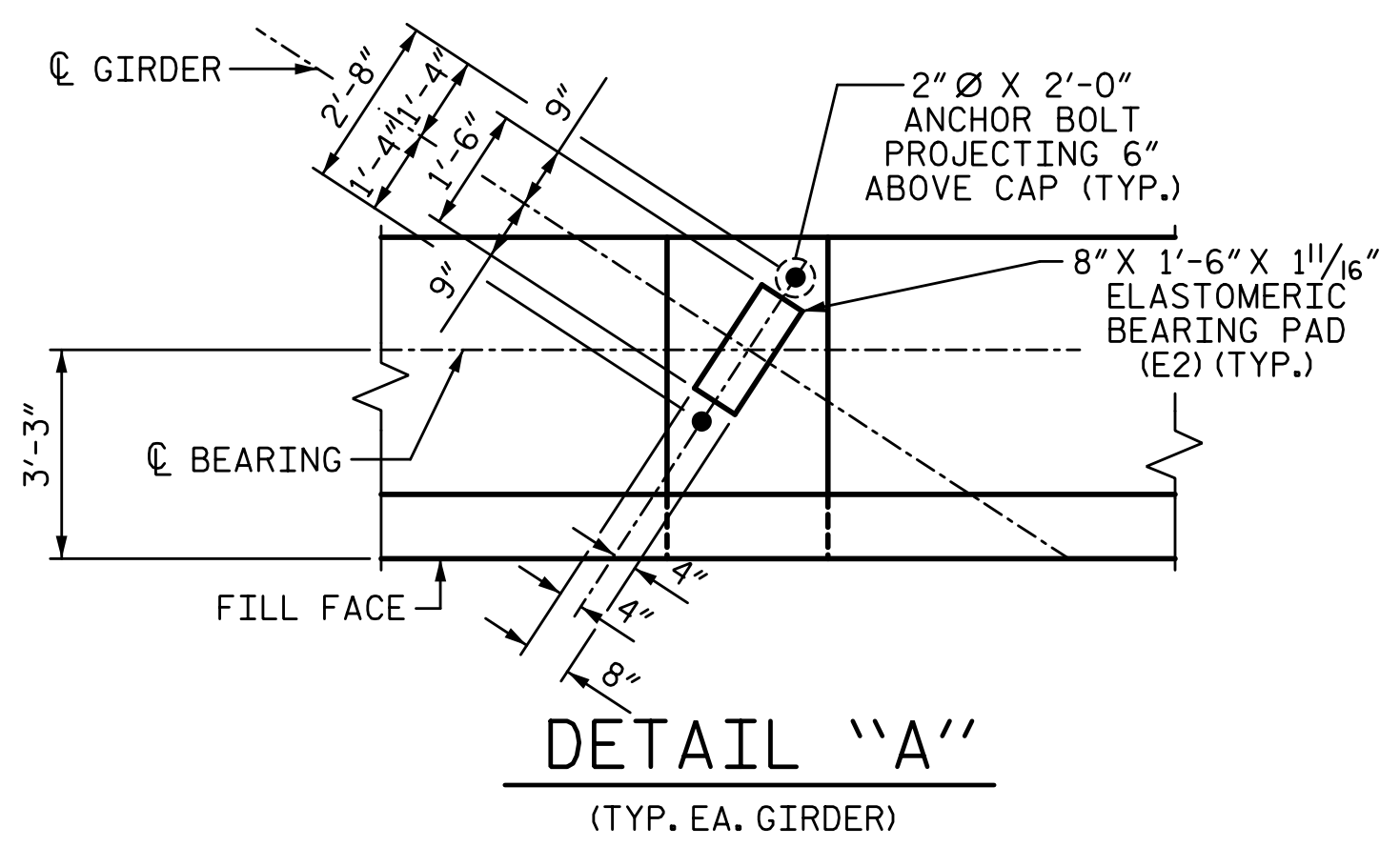
THE TOP SURFACE OF THE CAP EXCEPT THE BRIDGE SEAT BUILDUPS SHALL BE SLOPED TRANSVERSELY FROM THE FILL FACE TO THE BACK FACE AT THE RATE OF 2%.

SEE GENERAL DRAWING "FOUNDATION LAYOUT" FOR ADDITIONAL NOTES FOR DRIVING PILES.

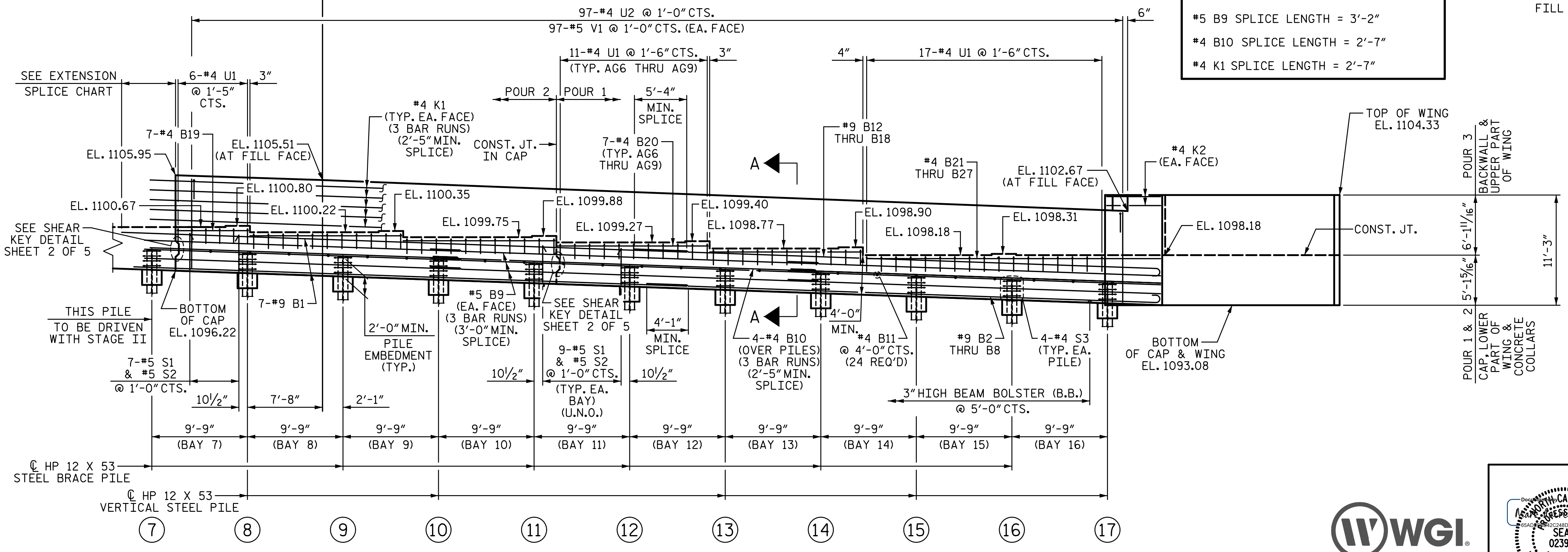


PLAN

EXTENSION SPLICE CHART	
#9 B1 (BOTTOM) SPLICE LENGTH = 4'-3"	
#9 B1 (TOP) SPLICE LENGTH = 5'-6"	
#5 B9 SPLICE LENGTH = 3'-2"	
#4 B10 SPLICE LENGTH = 2'-7"	
#4 K1 SPLICE LENGTH = 2'-7"	



TOP OF PILE ELEVATIONS			
PILE	ELEVATION	PILE	ELEVATION
7	1098.30	13	1096.47
8	1098.00	14	1096.17
9	1097.69	15	1095.86
10	1097.39	16	1095.56
11	1097.08	17	1095.25
12	1096.78		



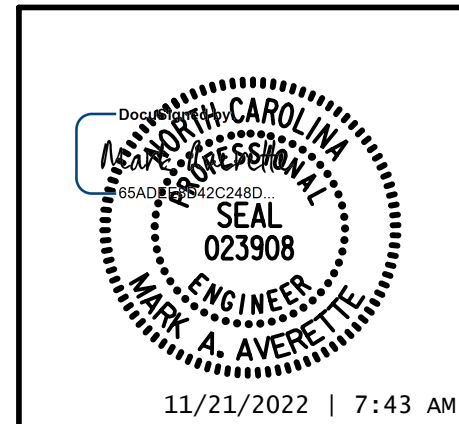
ELEVATION

PROJECT NO. B-5869
 COUNTY BURKE
 STATION: 21+62.39 -L-

SHEET 1 OF 5

DRAWN BY: S.D. COOPER DATE: 3-2022
 CHECKED BY: M. AVERETTE DATE: 3-2022
 DESIGN ENGINEER OF RECORD: M. AVERETTE DATE: 3-2022

U.N.O. = UNLESS NOTED OTHERWISE



STATE OF NORTH CAROLINA
 DEPARTMENT OF TRANSPORTATION
 RALEIGH
 SUBSTRUCTURE

END BENT 1

STAGE II

REVISIONS					
NO.	BY:	DATE:	NO.	BY:	DATE:
1			3		
2			4		

SHEET NO. S-51
 TOTAL SHEETS 72

11/21/2022 | 7:43 AM
DOCUMENT NOT CONSIDERED FINAL UNLESS ALL SIGNATURES COMPLETED