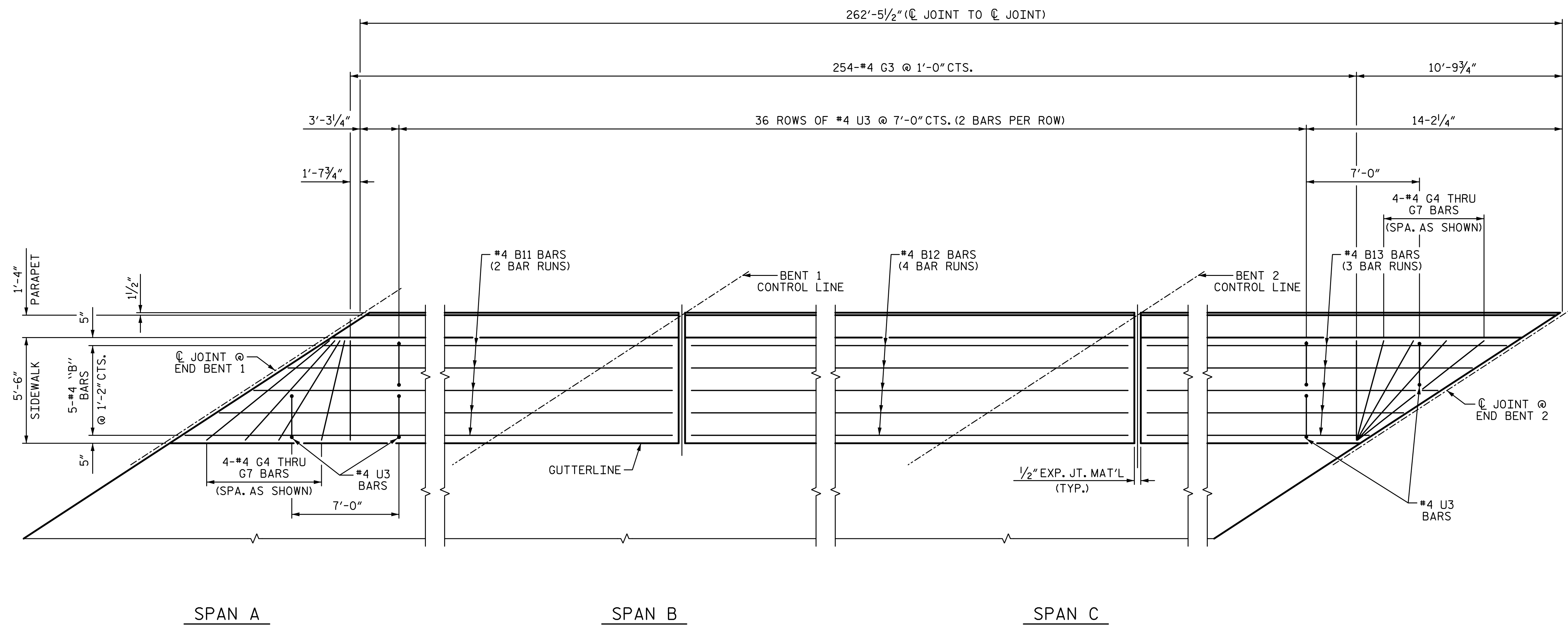
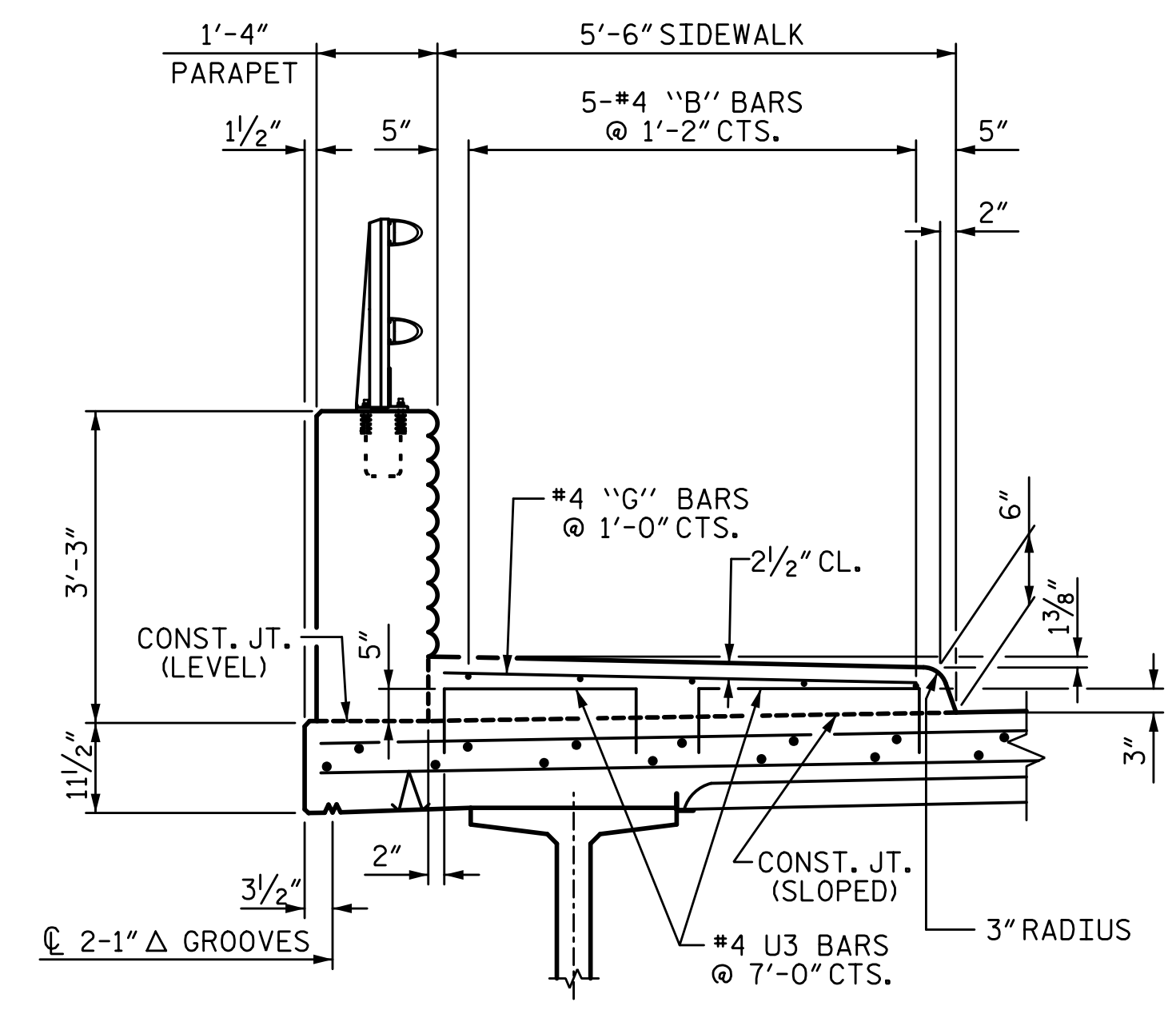


11/21/2022 10:18:53 AM P:\Raleigh\Projects\2018\Division 13 (SEA)\B-5869 (Burke 99)\Structures\Drawings\SMU_SW_110099(2).dgn



PLAN OF SIDEWALK
DIMENSIONS ARE MEASURED ALONG
OUTSIDE FACE OF CONCRETE PARAPET



SECTION THRU SIDEWALK

NOTES:

THE #4U3 BARS MAY BE PUSHED INTO GREEN CONCRETE AFTER SPAN HAS BEEN SCREEDED OFF.

SIDEWALK IN A CONTINUOUS UNIT SHALL NOT BE CAST UNTIL ALL SLAB CONCRETE IN THE UNIT HAS BEEN CAST AND HAS REACHED A MINIMUM COMPRESSIVE STRENGTH OF 3000 PSI.

GROOVED CONTRACTION JOINTS, 1/2" IN DEPTH, SHALL BE TOOLED IN ALL EXPOSED FACES OF THE SIDEWALK IN ACCORDANCE WITH ARTICLE 825-10(B) OF THE STANDARD SPECIFICATIONS. THE CONTRACTION JOINTS SHALL BE LOCATED AT A SPACING OF 8 FT. TO 10 FT. BETWEEN EXPANSION JOINTS. NO CONTRACTION JOINT WILL BE REQUIRED FOR SEGMENTS LESS THAN 10 FT. IN LENGTH.

ALL REINFORCING STEEL IN SIDEWALK SHALL BE EPOXY COATED.

SEE "STRIP SEAL DETAILS FOR SIDEWALK" SHEETS FOR SIDEWALK COVER PLATES AT END BENTS.

CONCRETE AND REINFORCING STEEL FOR THE SIDEWALK ARE INCLUDED IN THE SUPERSTRUCTURE BILL OF MATERIAL. PAYMENT FOR THE SIDEWALK SHALL BE INCLUDED IN THE PAY ITEM "REINFORCED CONCRETE DECK SLAB".

FOR SIDEWALK ON APPROACH SLABS, SEE "BRIDGE APPROACH SLAB DETAILS" SHEETS.

PROJECT NO. B-5869
BURKE COUNTY
STATION: 21+62.39 -L-

STATE OF NORTH CAROLINA
DEPARTMENT OF TRANSPORTATION
RALEIGH
SUPERSTRUCTURE
SIDEWALK DETAILS

DRAWN BY: S.D. COOPER DATE: 3-2022
CHECKED BY: M. AVERETTE DATE: 3-2022
DESIGN ENGINEER OF RECORD: M. AVERETTE DATE: 3-2022



REVISIONS						SHEET NO.
NO.	BY:	DATE:	NO.	BY:	DATE:	S-39
1			3			TOTAL SHEETS
2			4			72

**DOCUMENT NOT CONSIDERED FINAL
UNLESS ALL SIGNATURES COMPLETED**