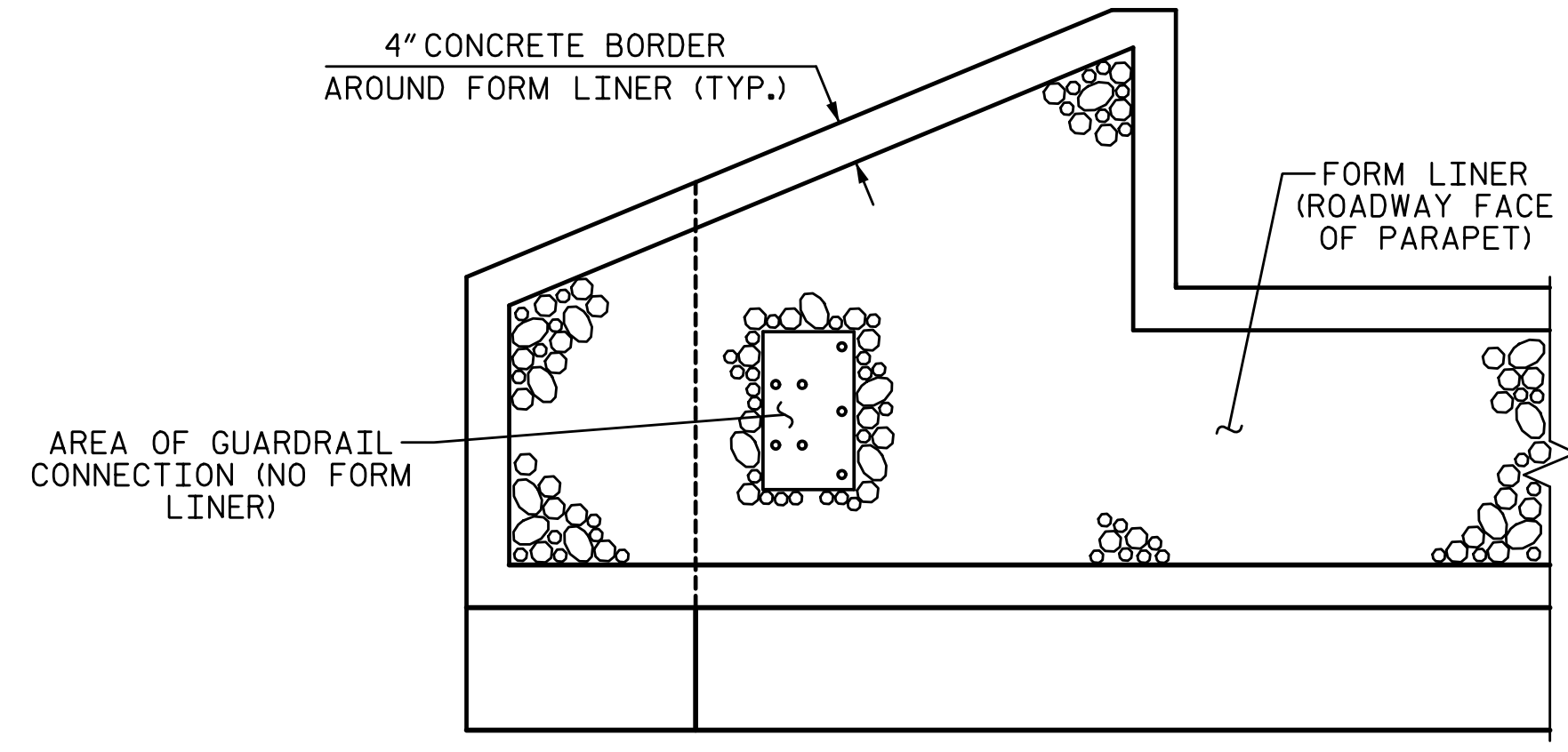
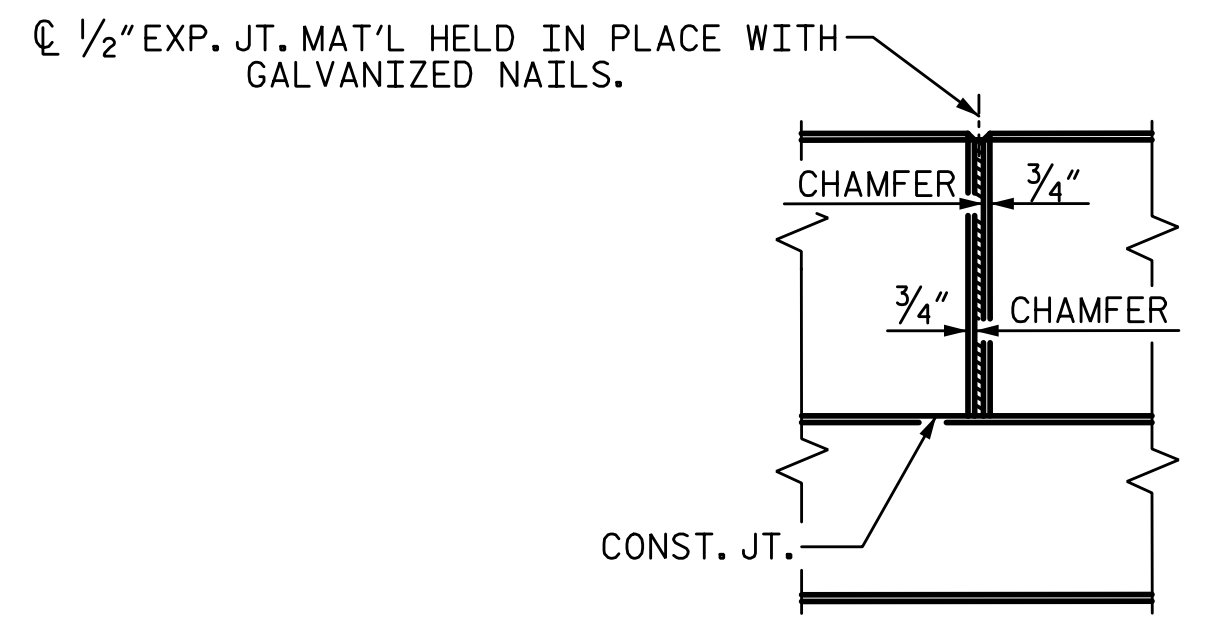


3/23/2023 8:07:00 AM P:\Raleigh\Projects\2018\Division 13 (SEA)\B-5869 (Burke 99)\Structures\Drawings\2\Final\2\B5869\_SMU\_BR\_110099(2).dgn



**FORM LINER DETAIL**

FOR LOCATION OF GUARDRAIL CONNECTION AND AREA WITH NO FORM LINER SEE "GUARDRAIL ANCHORAGE DETAILS" SHEET



**ELEVATION AT EXPANSION JOINTS**

**NOTES:**

CONCRETE PARAPET IN A CONTINUOUS UNIT SHALL NOT BE CAST UNTIL ALL SLAB CONCRETE IN THE UNIT HAS BEEN CAST AND HAS REACHED A MINIMUM COMPRESSIVE STRENGTH OF 3,000 PSI.

ALL REINFORCING STEEL IN PARAPET AND END POSTS SHALL BE EPOXY COATED.

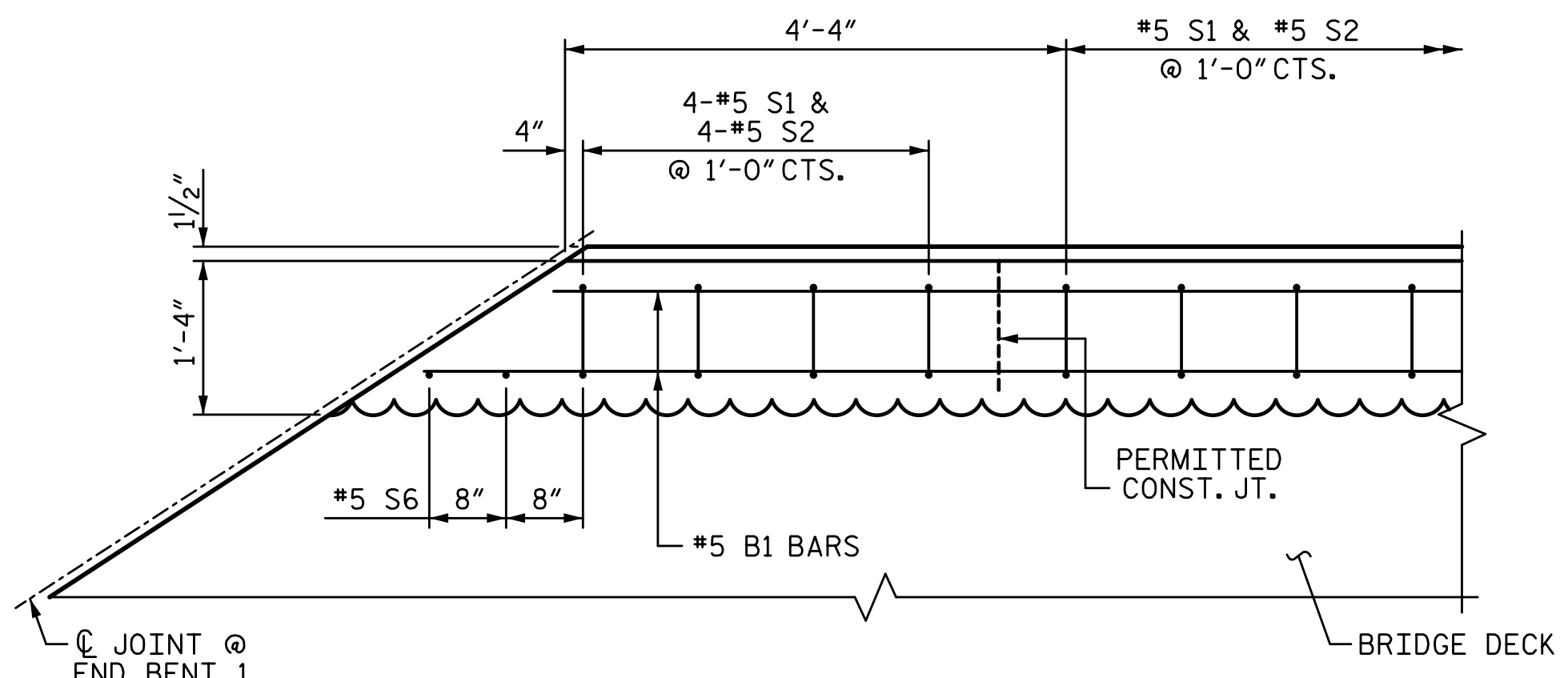
FOR DETAILS OF CONCRETE INSERTS IN END POSTS, SEE "RAIL POST SPACINGS AND END OF RAIL DETAILS" SHEET.

FOR DETAILS AND LOCATION OF GUARDRAIL ANCHOR ASSEMBLIES, SEE "GUARDRAIL ANCHORAGE DETAILS FOR METAL RAILS" SHEET.

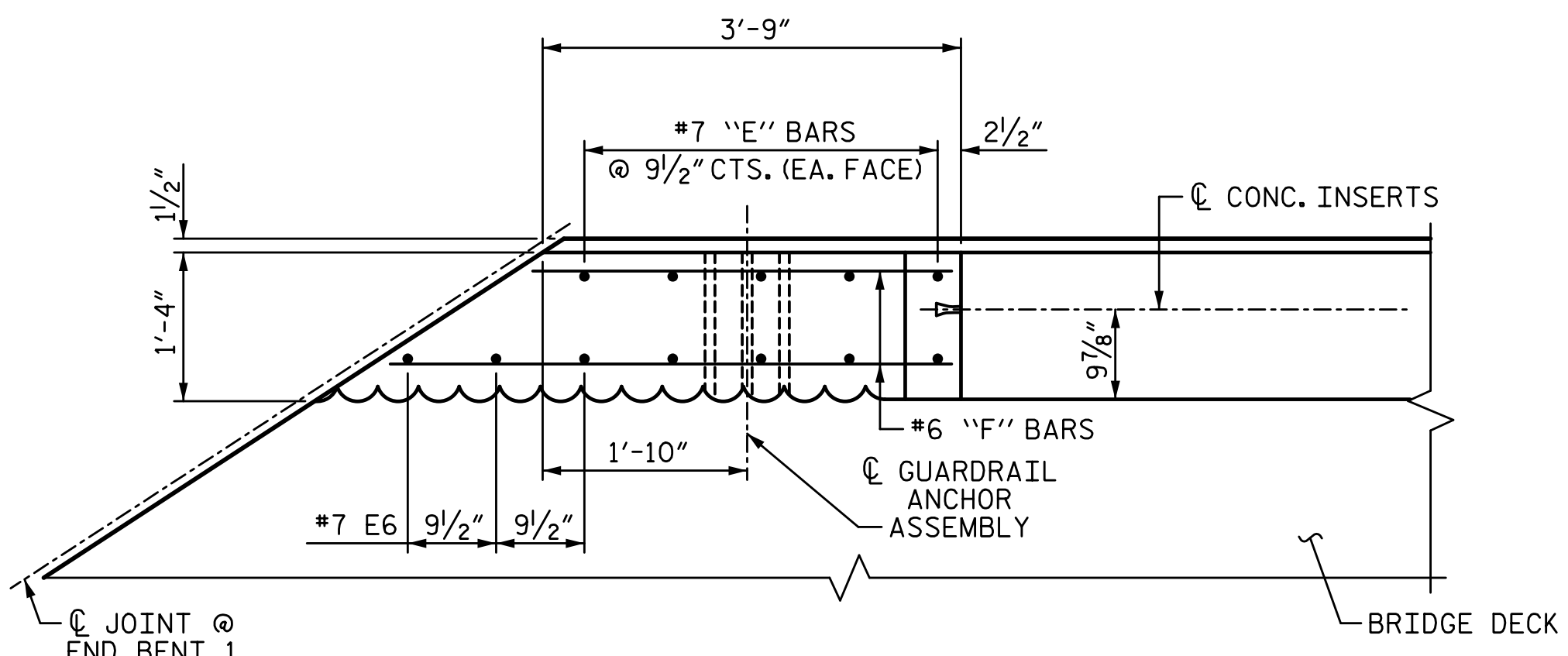
GROOVED CONTRACTION JOINTS, 1/2" IN DEPTH, SHALL BE TOOLED IN EXTERIOR FACE AND TOP SURFACE OF THE PARAPET AND IN ACCORDANCE WITH ARTICLE 825-10(B) OF THE STANDARD SPECIFICATIONS. A CONTRACTION JOINT SHALL BE LOCATED AT EACH THIRD POINT BETWEEN PARAPET EXPANSION JOINTS. ONLY ONE CONTRACTION JOINT IS REQUIRED AT MIDPOINT OF PARAPET SEGMENTS LESS THAN 20 FEET IN LENGTH AND NO CONTRACTION JOINTS ARE REQUIRED FOR THOSE SEGMENTS LESS THAN 10 FEET IN LENGTH.

FOR ARCHITECTURAL CONCRETE SURFACE TREATMENT, SEE SPECIAL PROVISIONS.

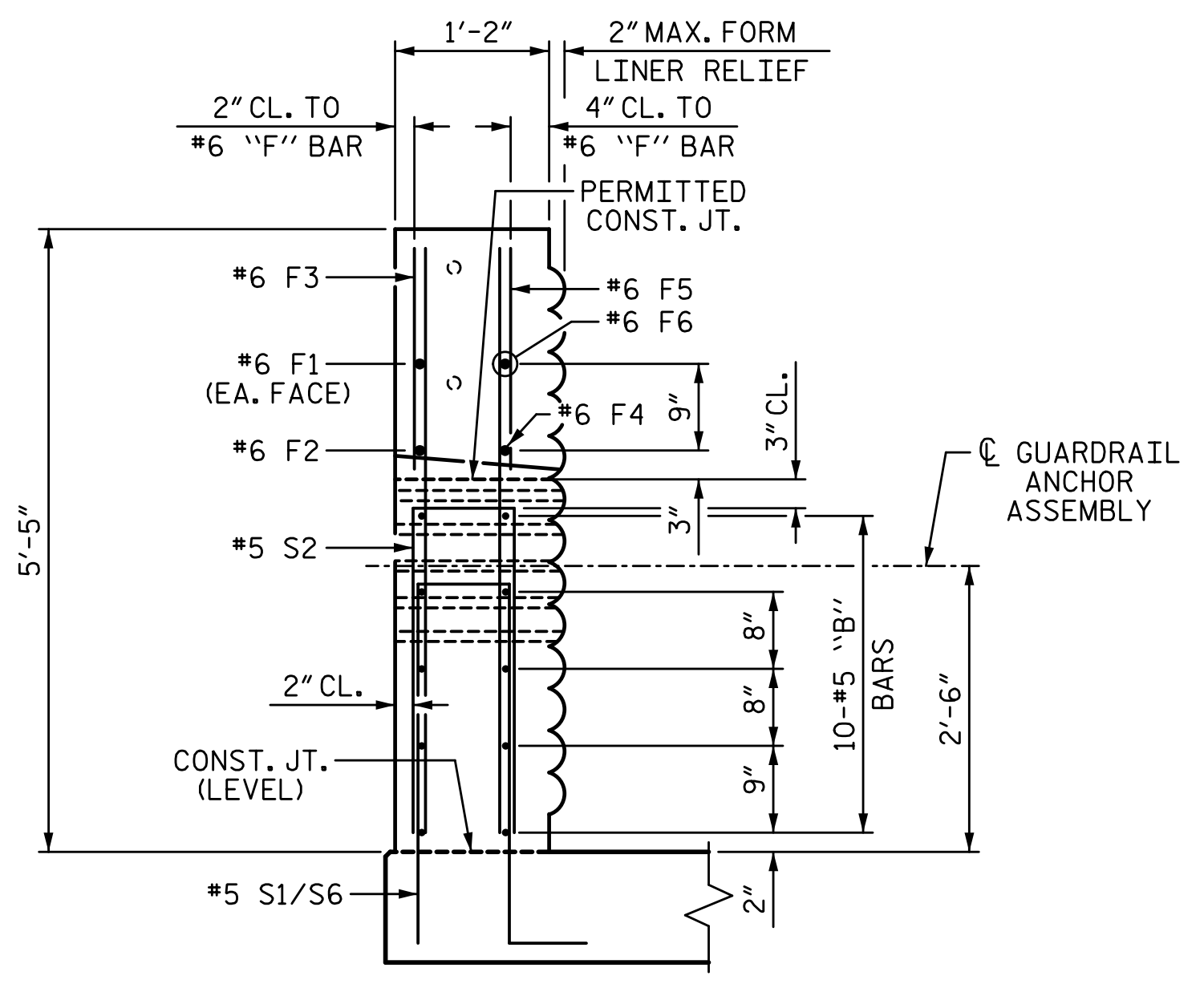
FOR APPLICATION OF BRIDGE COATING, SEE SPECIAL PROVISIONS.



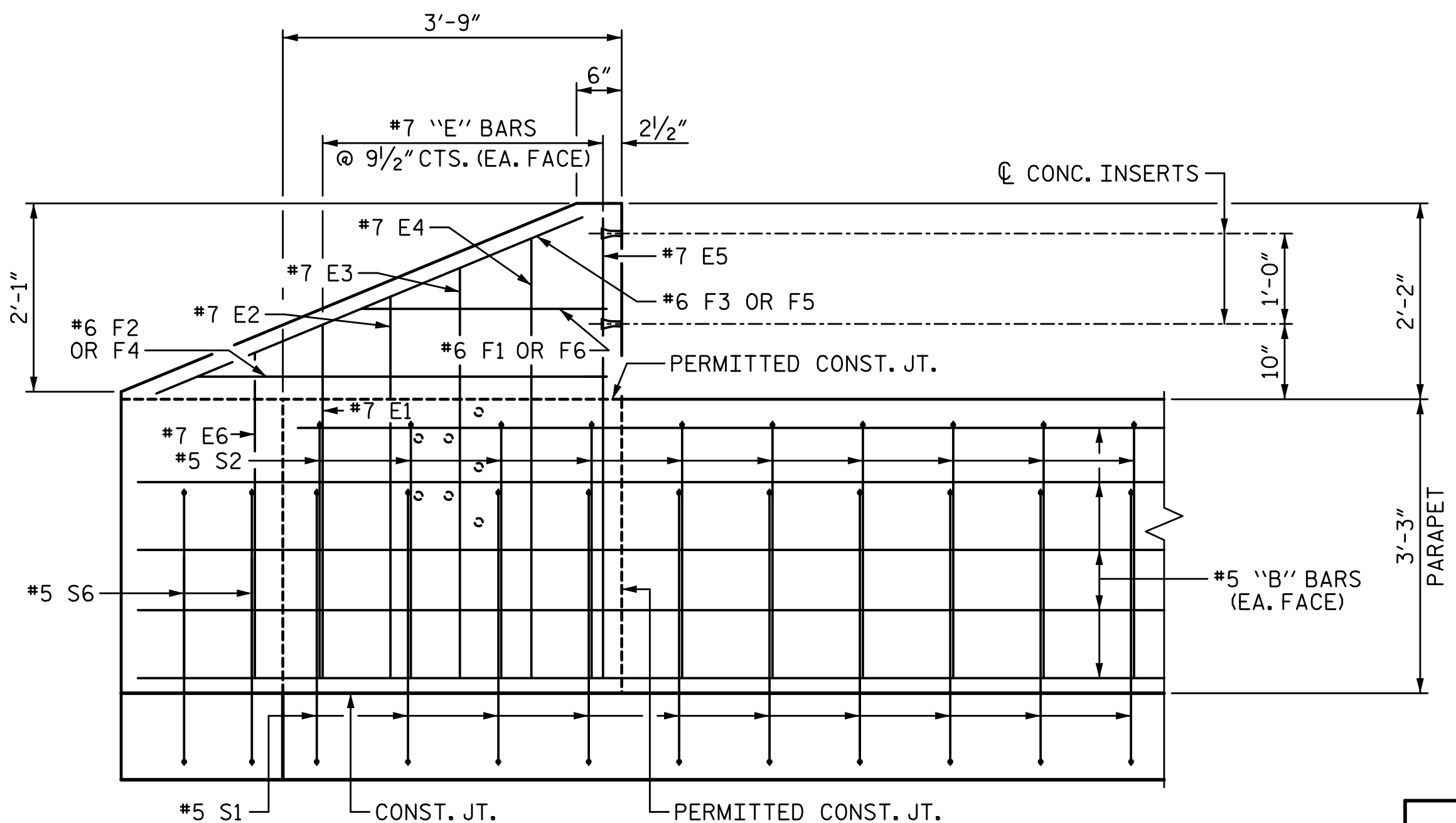
**PLAN OF PARAPET**



**PLAN OF END POST**



**END VIEW**

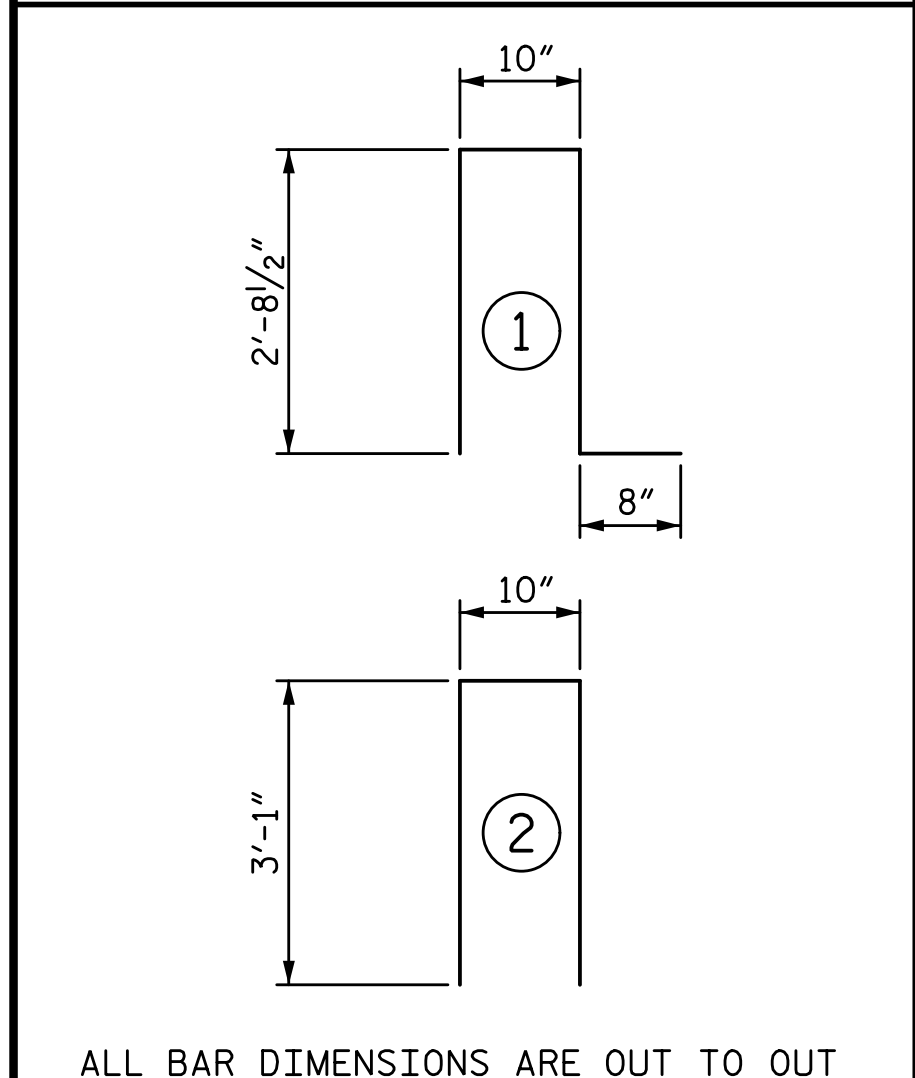


**ELEVATION**

**PARAPET AND END POST FOR TWO BAR METAL RAIL**

(1'-4" x 3'-3" PARAPET)

BILL OF MATERIAL						
1'-4" X 3'-3" PARAPET AND END POSTS						
BAR	NO.	SIZE	TYPE	LENGTH	WEIGHT	
*B1	20	#5	STR	12'-11"	269	
*B2	80	#5	STR	20'-7"	1,717	
*B3	20	#5	STR	24'-1"	502	
*B5	20	#5	STR	14'-8"	306	
*E1	4	#7	STR	3'-10"	31	
*E2	4	#7	STR	4'-2"	34	
*E3	4	#7	STR	4'-6"	37	
*E4	4	#7	STR	4'-10"	40	
*E5	4	#7	STR	5'-1"	42	
*E6	2	#7	STR	3'-7"	15	
*F1	2	#6	STR	1'-3"	4	
*F2	2	#6	STR	3'-1"	9	
*F3	2	#6	STR	3'-10"	12	
*F4	2	#6	STR	4'-4"	13	
*F5	2	#6	STR	5'-4"	16	
*F6	2	#6	STR	2'-5"	7	
*S1	262	#5	1	6'-11"	1,890	
*S2	262	#5	2	7'-0"	1,913	
*S6	4	#5	STR	3'-9"	16	
EPOXY COATED REINFORCING STEEL					6,873 LB	
CLASS AA CONCRETE					42.5 CY	
1'-4" X 3'-3" CONCRETE PARAPET					262.46 LF	

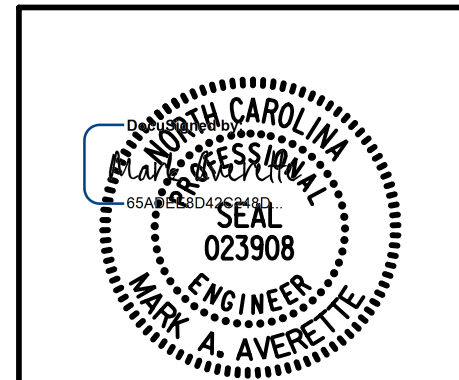


ALL BAR DIMENSIONS ARE OUT TO OUT  
\*EPOXY COATED REINFORCING STEEL

PROJECT NO. B-5869  
BURKE COUNTY  
STATION: 21+62.39 -L-

SHEET 3 OF 3

STATE OF NORTH CAROLINA  
DEPARTMENT OF TRANSPORTATION  
RALEIGH  
SUPERSTRUCTURE  
**CONCRETE PARAPET DETAILS**  
STAGE III



LICENSURE NO. C-4434

DRAWN BY: S.D. COOPER DATE: 3-2022  
CHECKED BY: M. AVERETTE DATE: 3-2022  
DESIGN ENGINEER OF RECORD: M. AVERETTE DATE: 3-2022

REVISIONS						SHEET NO.
NO.	BY:	DATE:	NO.	BY:	DATE:	S-30
1			3			TOTAL SHEETS
2			4			72

**DOCUMENT NOT CONSIDERED FINAL UNLESS ALL SIGNATURES COMPLETED**