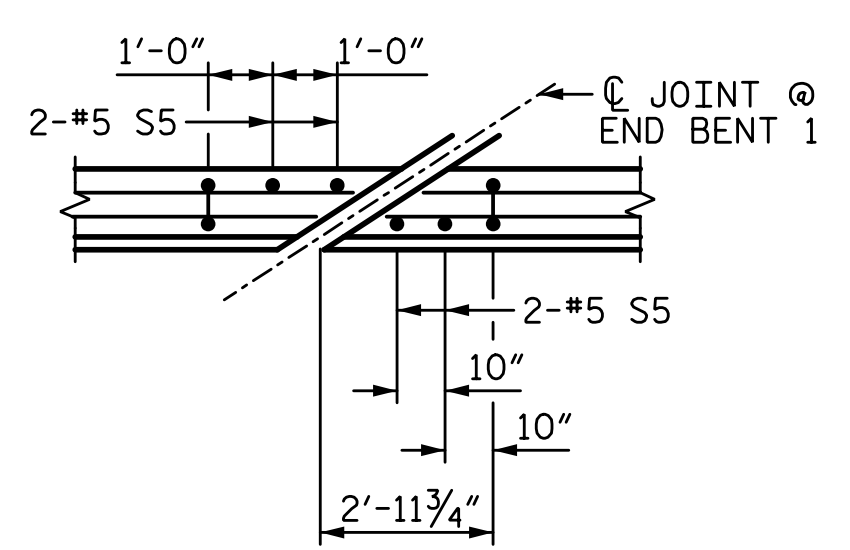
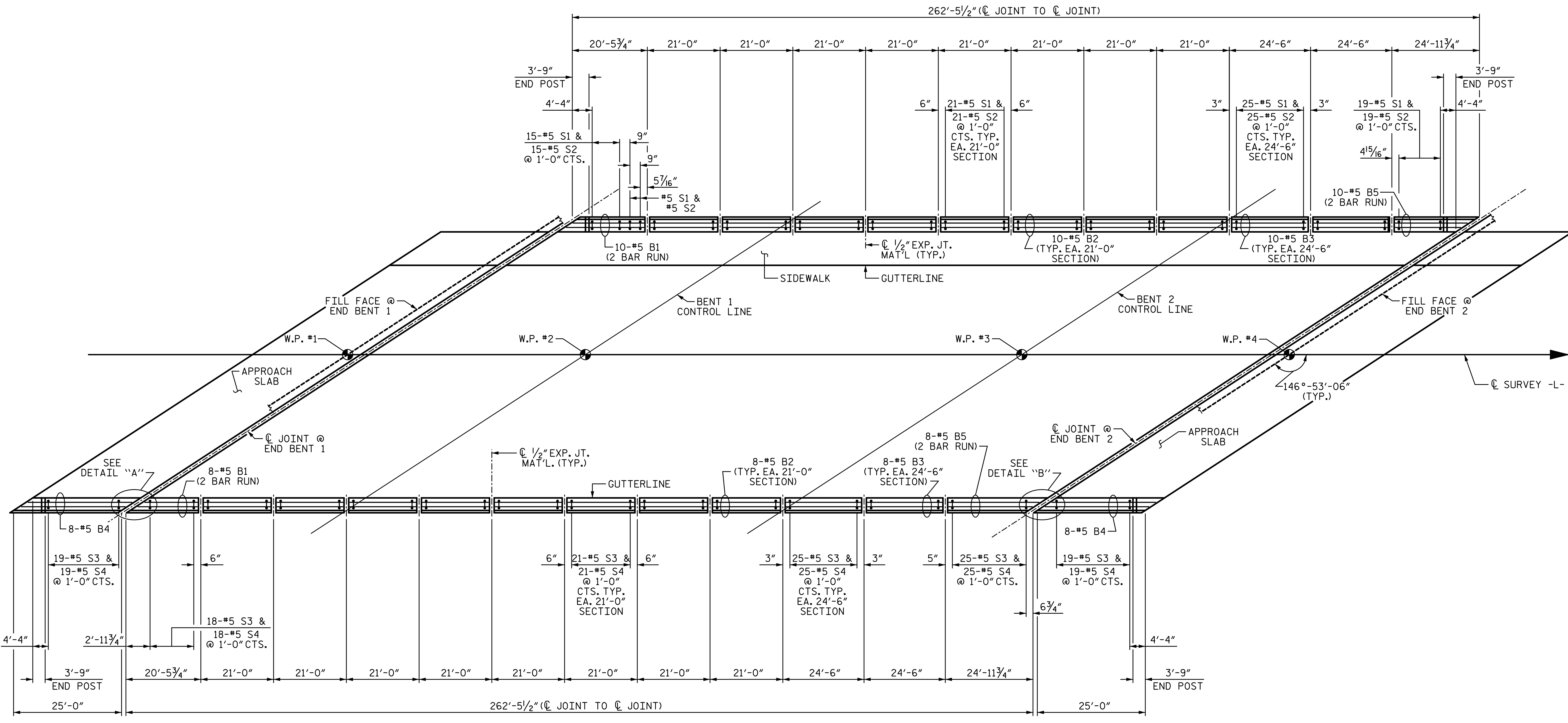
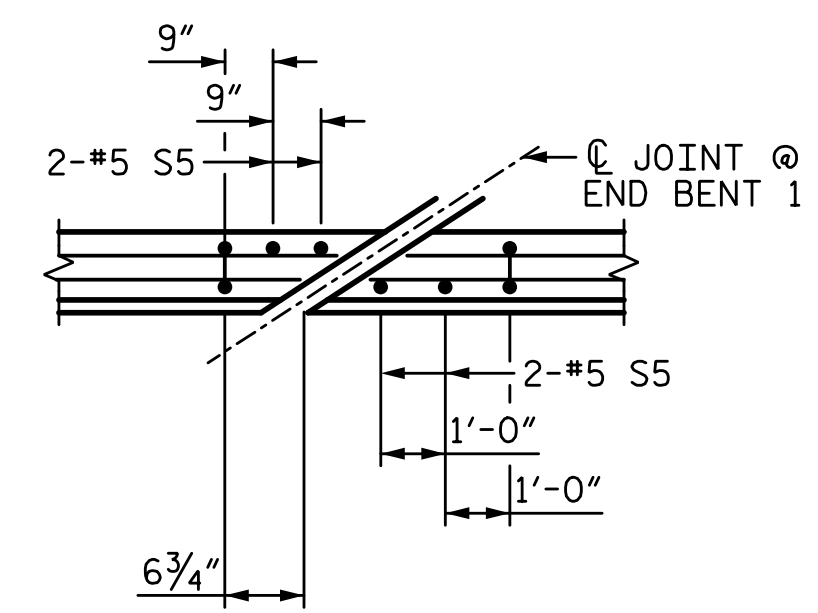


11/21/2022 10:18:46 AM P:\Railigh\Projects\2018\Division 13 (SEA)\B-5869 (Burke 99)\Structures\Drawings\2\Final\2\B5869\_SMU\_BR\_110099(2).dgn



DETAIL "A"

NOTE: ALL DIMENSIONS ARE MEASURED ALONG OUTSIDE FACE OF CONCRETE PARAPET  
 GROOVED CONTRACTION JOINTS NOT SHOWN FOR CLARITY, SEE "RAIL POST SPACINGS  
 AND END OF RAIL DETAILS" SHEET FOR LOCATION.  
 STAGE II CONCRETE PARAPET EXTENDS FULL LENGTH OF APPROACH SLABS.  
 FOR FORM LINER DETAILS, SEE SPECIAL PROVISIONS  
 SEE SHEET 2 OF 3 AND SHEET 3 OR 3 FOR END POST DETAILS  
 S5 BARS MAY SHIFT SLIGHTLY TO AVOID CONFLICT WITH  
 STRIP SEAL ASSEMBLY

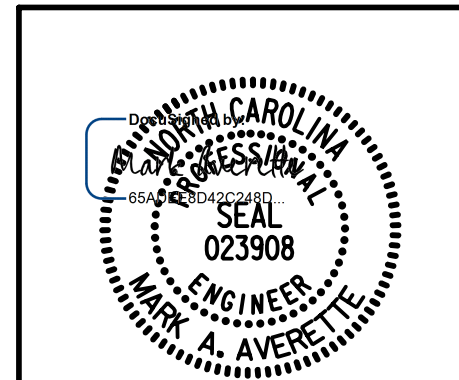


DETAIL "B"

PROJECT NO. B-5869  
BURKE COUNTY  
 STATION: 21+62.39 -L-

SHEET 1 OF 3

STATE OF NORTH CAROLINA  
 DEPARTMENT OF TRANSPORTATION  
 RALEIGH  
 SUPERSTRUCTURE  
 CONCRETE PARAPET



**W WGI**  
 5640 Dillard Drive, Suite 200  
 Cary, NC 27518  
 LICENSURE NO. C-4434

DRAWN BY: S.D. COOPER	DATE: 3-2022
CHECKED BY: M. AVERETTE	DATE: 3-2022
DESIGN ENGINEER OF RECORD: M. AVERETTE	DATE: 3-2022

REVISIONS						SHEET NO.
NO.	BY:	DATE:	NO.	BY:	DATE:	S-28
1			3			TOTAL SHEETS
2			4			72

DOCUMENT NOT CONSIDERED FINAL  
 UNLESS ALL SIGNATURES COMPLETED