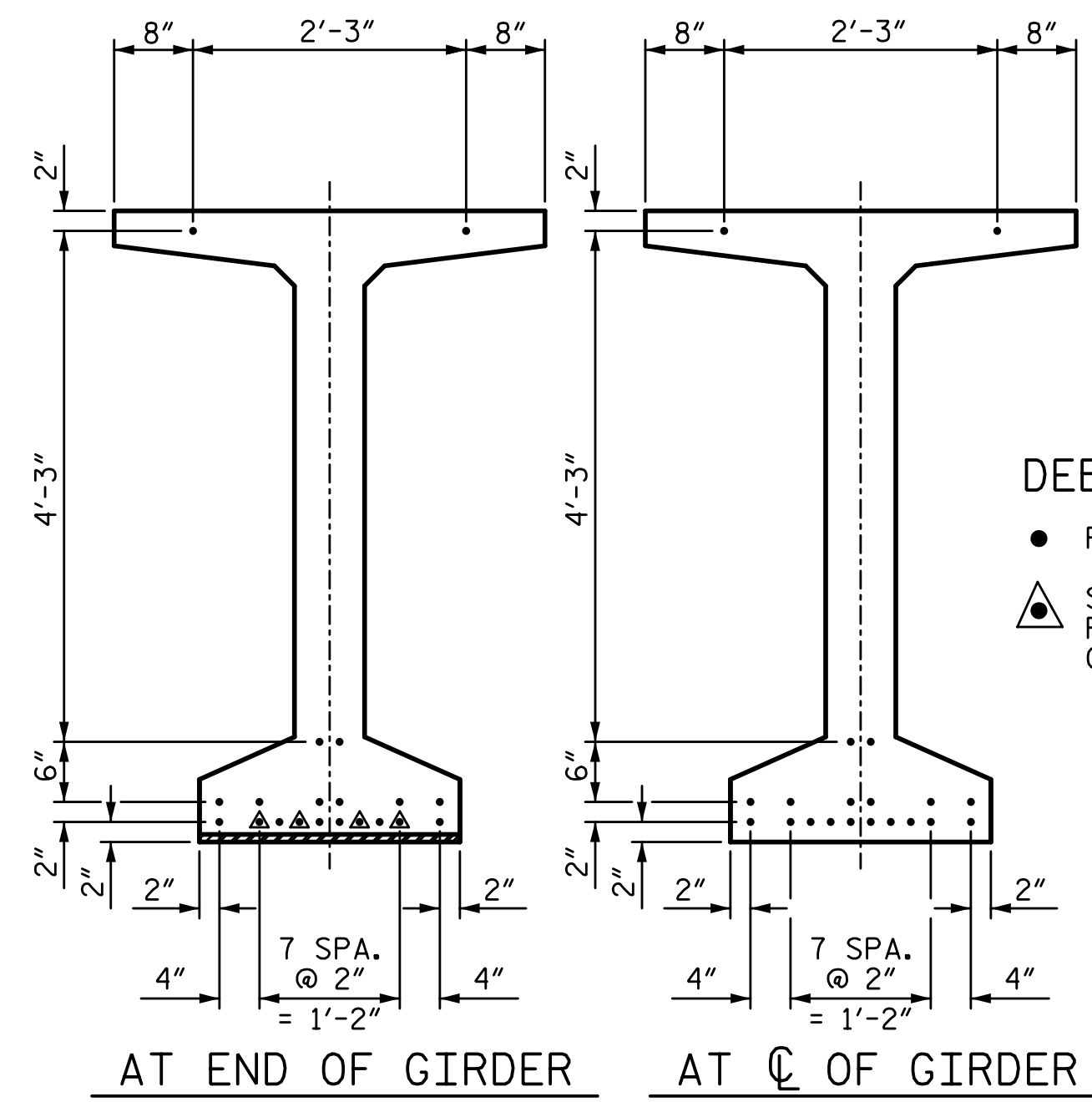
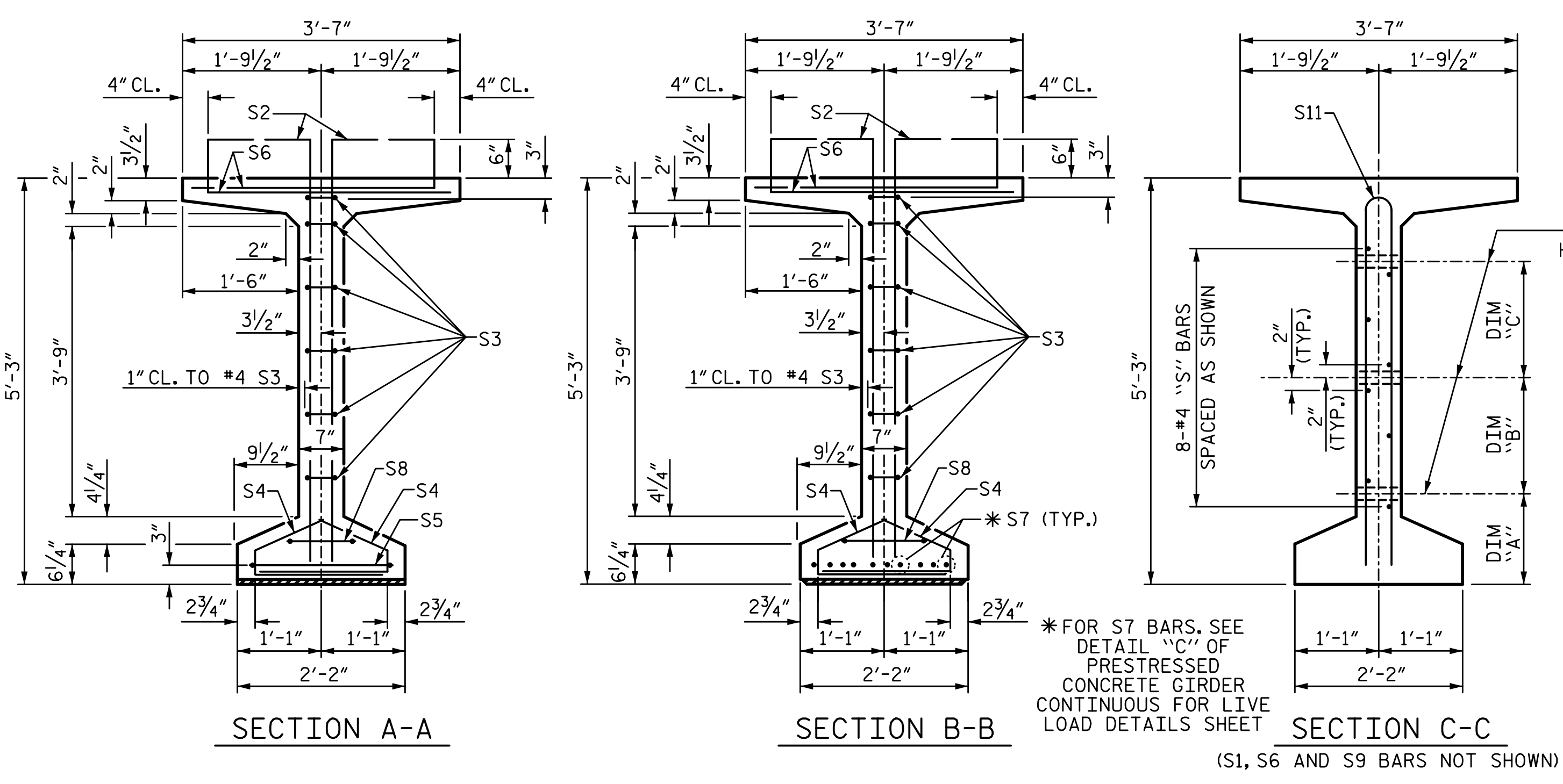


11/21/2022 10:18:41 AM P:\Raleigh\Projects\2018\Division 13 (SEA)\B-5869 (Burke 99)\Structures\Drawings\Final\21\B5869\_SMJ\_G\_110099(2).dgn



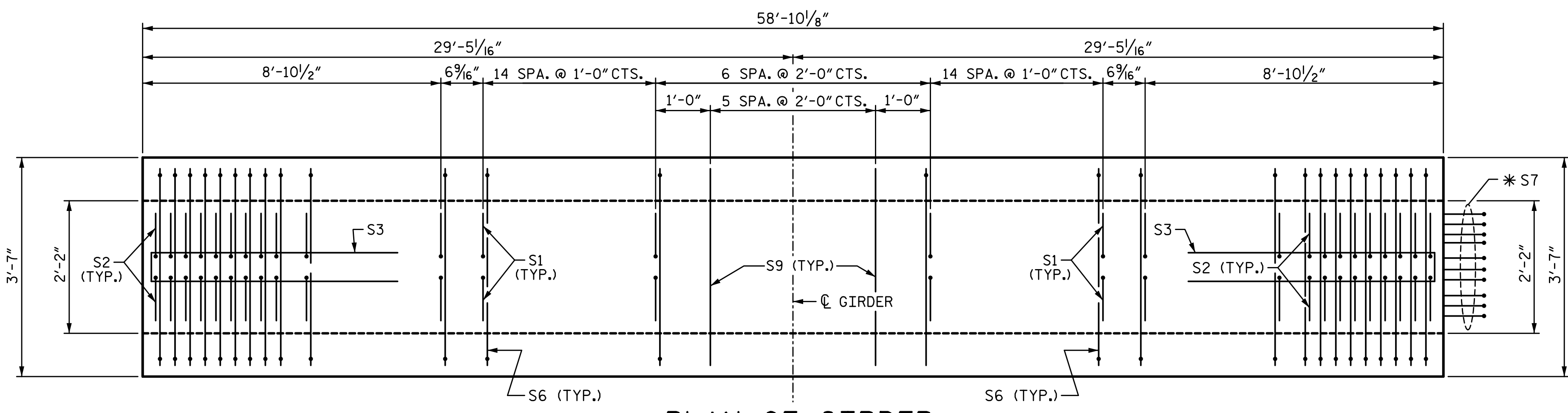
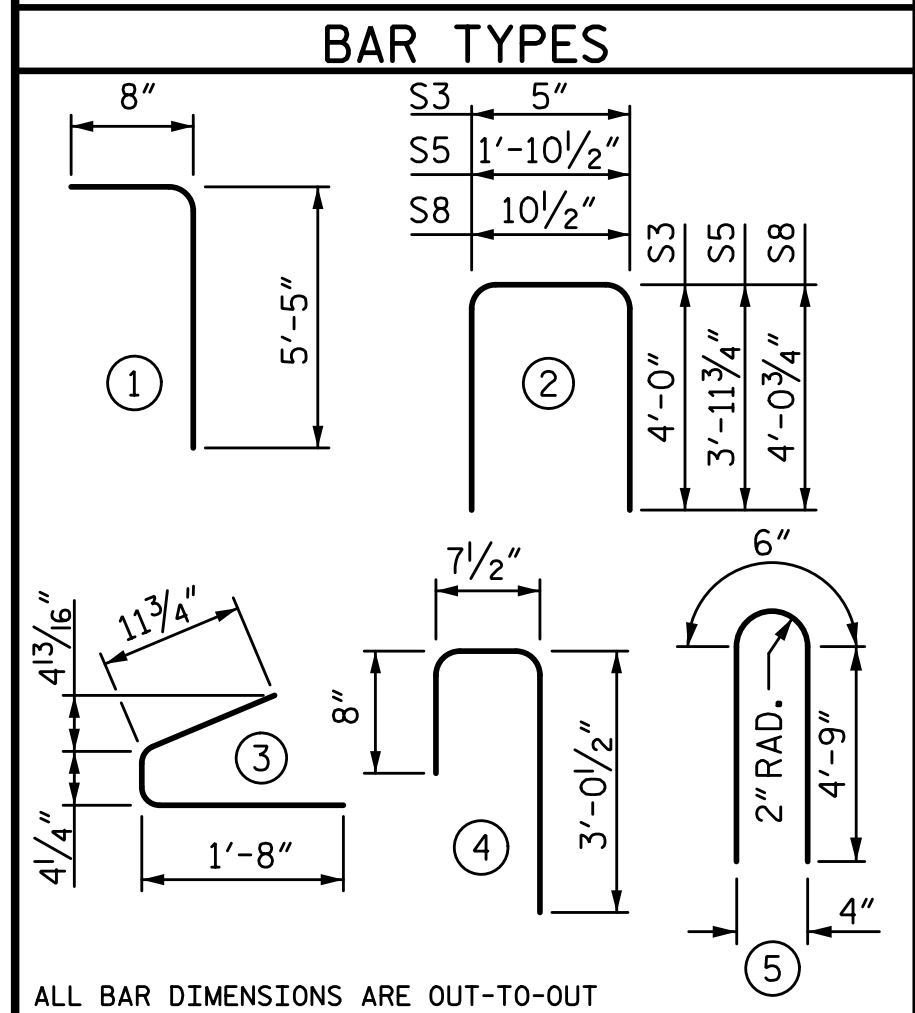
**DEBONDING LEGEND**

- FULLY BONDED STRANDS
- ▲ STRANDS DEBONDED FOR 10'-0" FROM END OF GIRDER

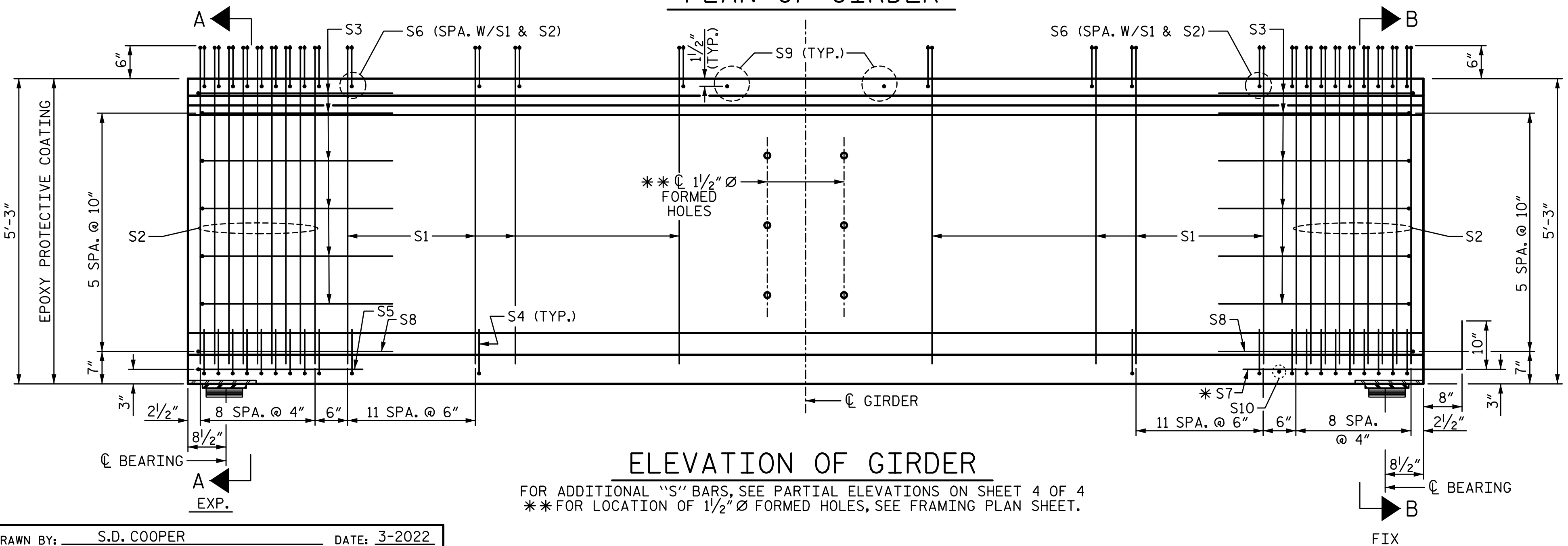
BAR	NO.	SIZE	TYPE	LENGTH	WEIGHT	
S1	118	#4	1	6'-1"	480	
S2	36	#5	1	6'-1"	228	
S3	12	#4	2	8'-5"	67	
S4	84	#4	3	3'-0"	168	
S5	1	#5	2	9'-10"	10	
S6	154	#5	4	4'-4"	696	
* S7	10	#5	STR	3'-8"	38	
S8	2	#5	2	9'-0"	19	
S9	6	#5	STR	3'-3"	20	
S10	1	#3	STR	1'-10"	1	
AG1,AG4,AG5,AG10	S11	4	#5	5	10'-0"	42
AG2,AG3,AG6,AG7,AG8,AG9	S11	8	#5	5	10'-0"	83
AG1,AG4,AG5,AG10	S12	8	#4	STR	8'-0"	43
AG2,AG3,AG6,AG7,AG8,AG9	S13	8	#4	STR	21'-2"	113

\* NOTE: S7 BARS SHALL BE BENT BEFORE SHIPMENT. HEAT BENDING SHALL NOT BE ALLOWED.

**0.6" Ø LOW RELAXATION STRAND LAYOUT**



**PLAN OF GIRDER**



**ELEVATION OF GIRDER**

FOR ADDITIONAL "S" BARS, SEE PARTIAL ELEVATIONS ON SHEET 4 OF 4  
 \*\* FOR LOCATION OF 1/2" Ø FORMED HOLES, SEE FRAMING PLAN SHEET.

**QUANTITIES FOR ONE GIRDER**

	REINFORCING STEEL	6000 PSI CONCRETE	0.6" Ø L.R. STRANDS
	LB.	C.Y.	No.
AG1,AG4,AG5,AG10	1812	11.7	20
AG2,AG3,AG6,AG7,AG8,AG9	1923	11.7	20

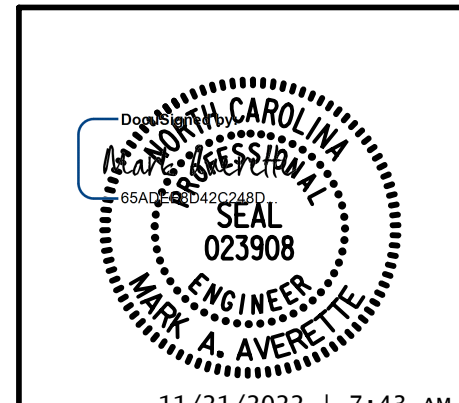
**GIRDERS REQUIRED**

NUMBER	LENGTH	TOTAL LENGTH
10	58'-10 1/8"	588.44'

PROJECT NO. B-5869  
 BURKE COUNTY  
 STATION: 21+62.39 -L-

SHEET 1 OF 4

STATE OF NORTH CAROLINA  
 DEPARTMENT OF TRANSPORTATION  
 RALEIGH  
 SUPERSTRUCTURE  
**63" PRESTRESSED CONCRETE  
 MODIFIED BULB TEE  
 CONTINUOUS FOR LIVE LOAD**  
 SPAN A



DRAWN BY: S.D. COOPER DATE: 3-2022  
 CHECKED BY: M. AVERETTE DATE: 3-2022  
 DESIGN ENGINEER OF RECORD: M. AVERETTE DATE: 3-2022

REVISIONS				SHEET NO.	
NO.	BY:	DATE:	NO.	BY:	DATE:
1			3		
2			4		

TOTAL SHEETS: 72

**DOCUMENT NOT CONSIDERED FINAL  
 UNLESS ALL SIGNATURES COMPLETED**