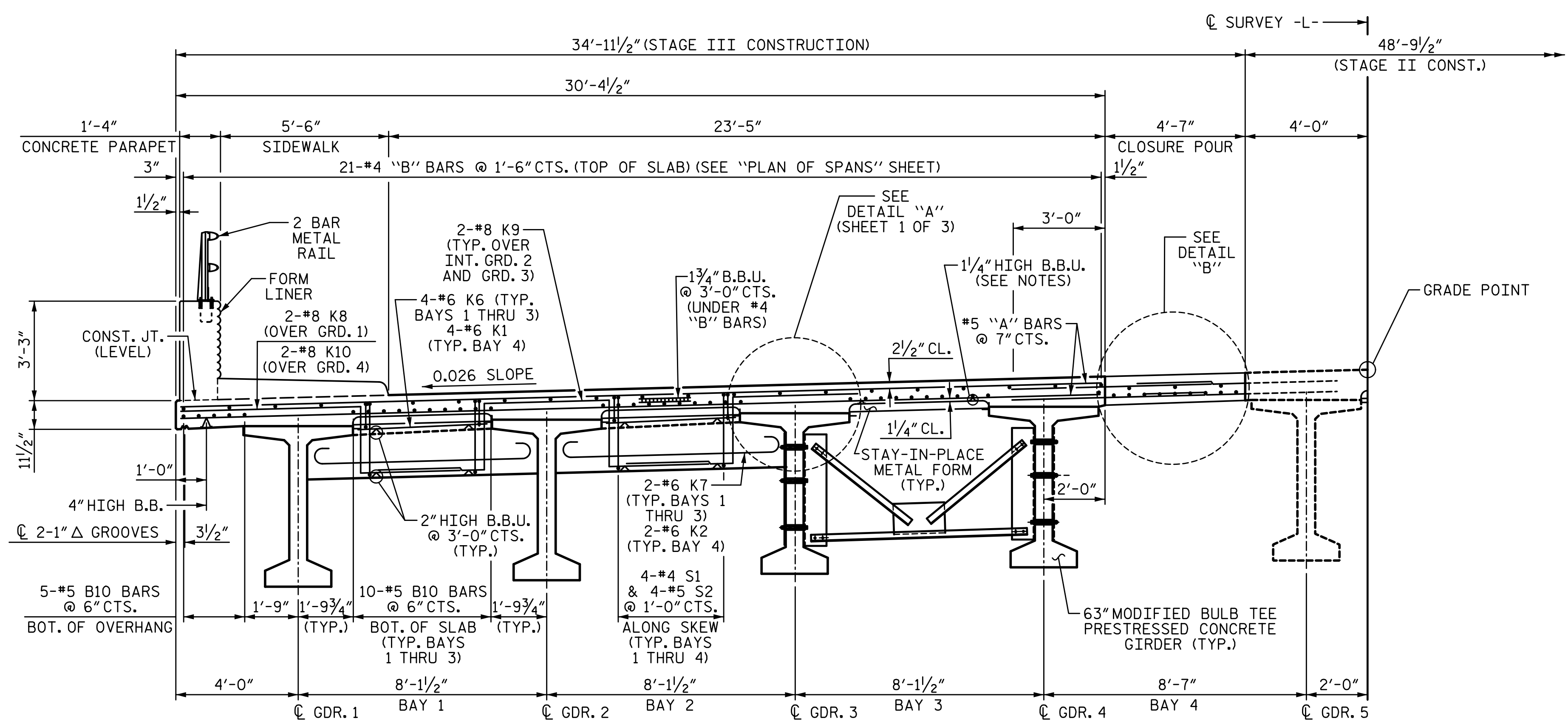
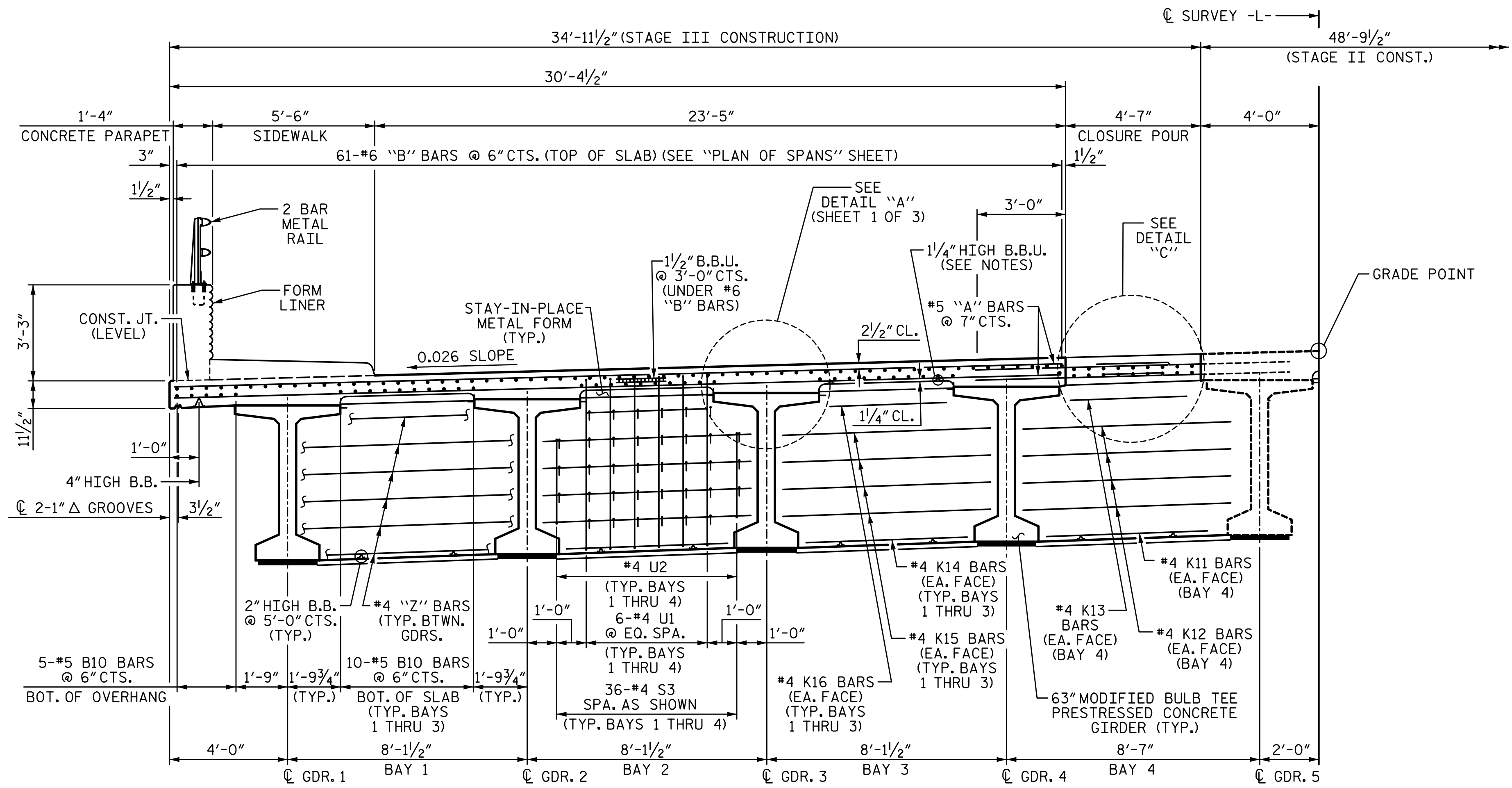


11/21/2022 10:18:35 AM P:\Raleigh\Projects\2018\Division 13 (SEA)\B-5869 (Burke 99)\Structures\Drawings\2\Final\2\B5869\_SMU\_Ts\_110099(2).dgn

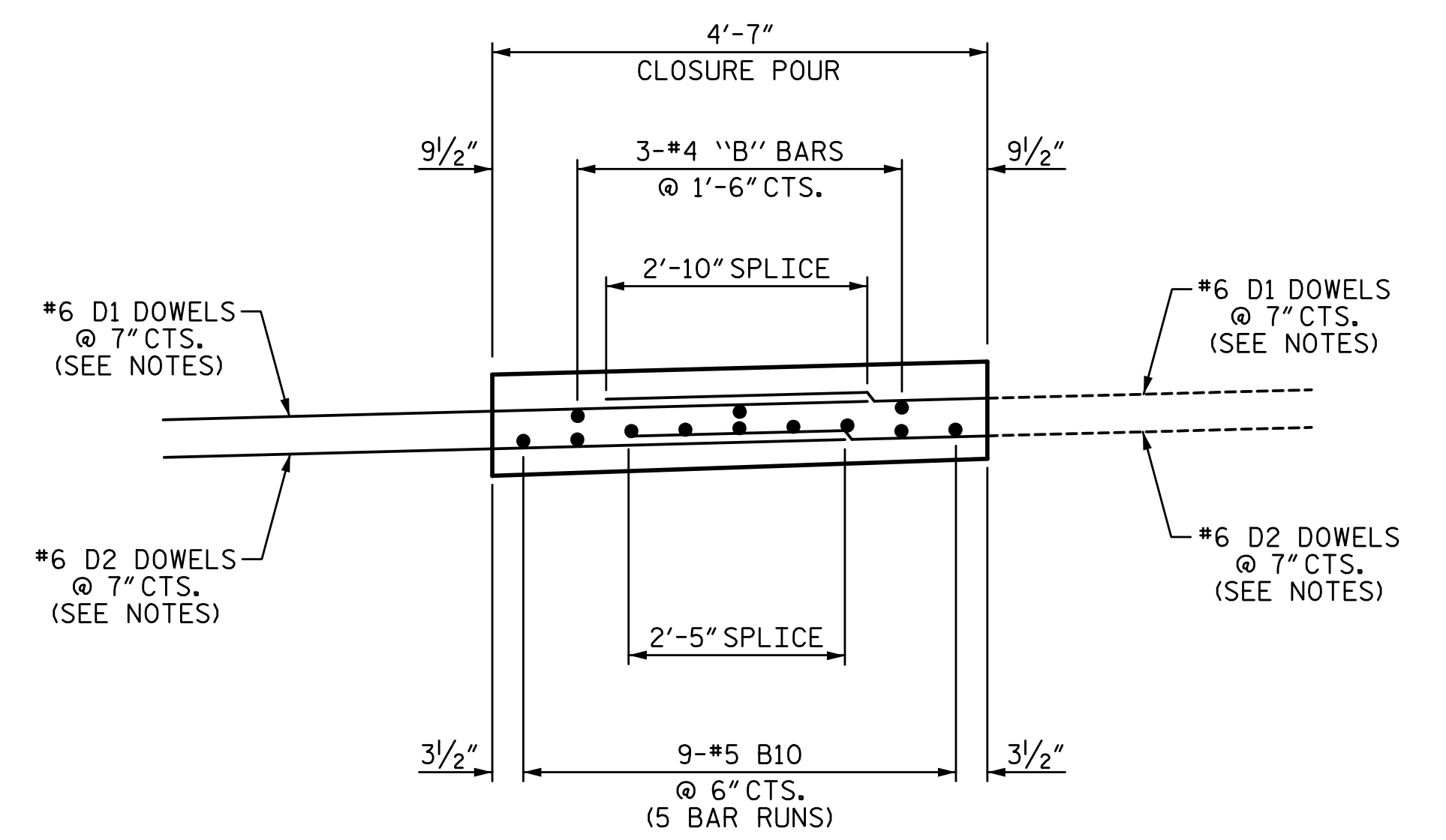


PARTIAL TYPICAL SECTION (SHOWING END BENT DIAPHRAGM)

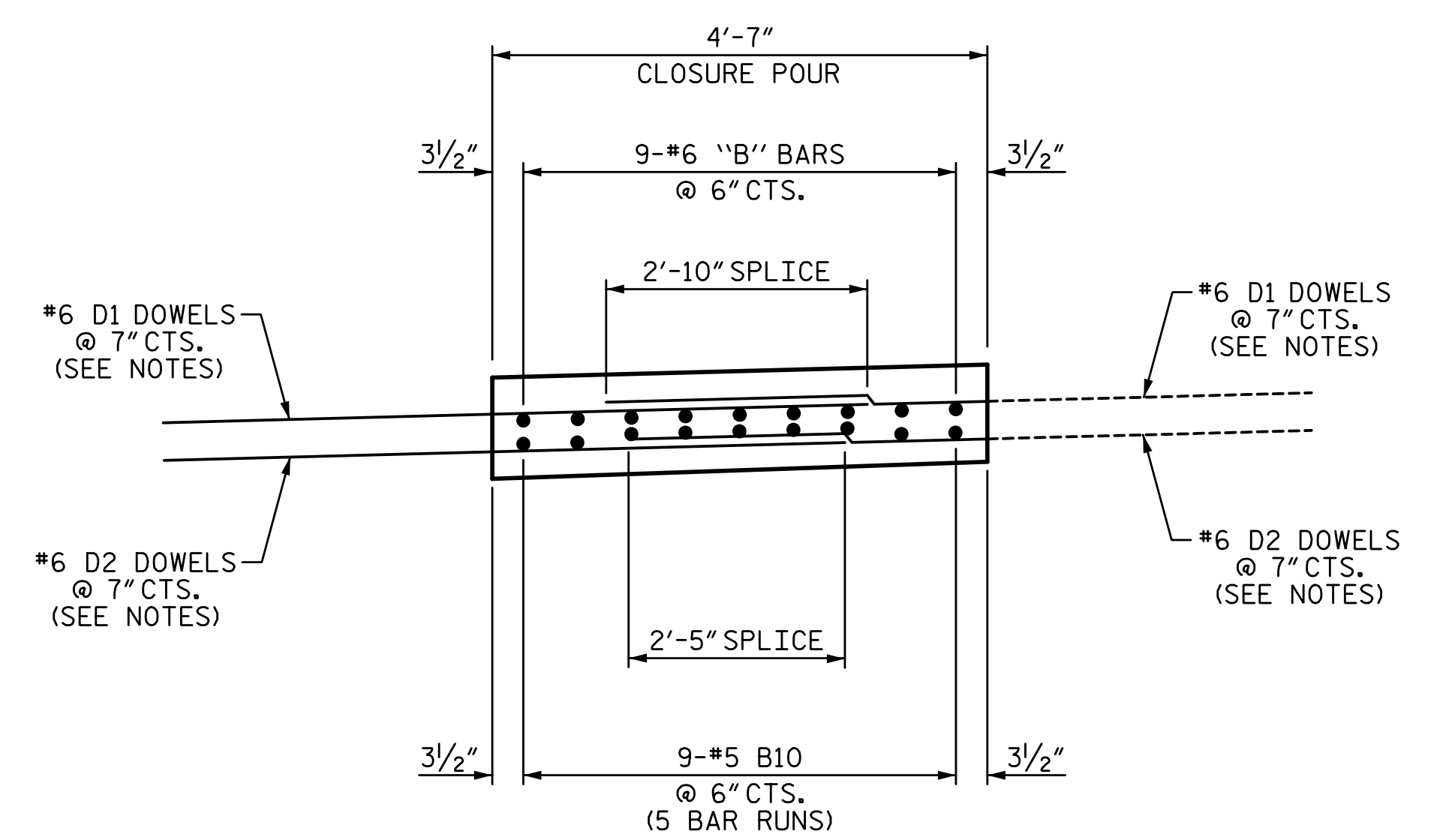
PARTIAL TYPICAL SECTION (SHOWING INTERMEDIATE DIAPHRAGM)



PARTIAL TYPICAL SECTION (SHOWING BENT DIAPHRAGM)



DETAIL "B" SEE "TOP OF DECK "B" BAR PLACEMENT" DETAIL ON SHEETS S-13 AND S-14



DETAIL "C" SEE "TOP OF DECK "B" BAR PLACEMENT" DETAIL ON SHEETS S-13 AND S-14

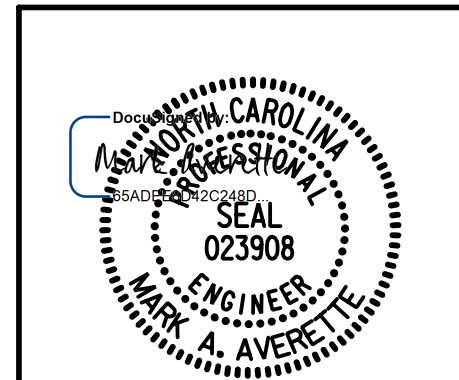
PROJECT NO. B-5869  
BURKE COUNTY  
STATION: 21+62.39 -L-

SHEET 2 OF 3

STATE OF NORTH CAROLINA  
DEPARTMENT OF TRANSPORTATION  
RALEIGH  
SUPERSTRUCTURE

TYPICAL SECTIONS

STAGE III



DRAWN BY: S.D. COOPER DATE: 3-2022  
CHECKED BY: M. AVERETTE DATE: 3-2022  
DESIGN ENGINEER OF RECORD: M. AVERETTE DATE: 3-2022

REVISIONS				SHEET NO.	
NO.	BY:	DATE:	NO.	BY:	DATE:
1			3		
2			4		

11/21/2022 | 7:43 AM

DOCUMENT NOT CONSIDERED FINAL  
UNLESS ALL SIGNATURES COMPLETED