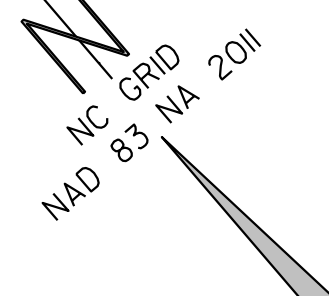


PROJECT REFERENCE NO.	SHEET NO.
B-5869	EC-04/CONST.04
RW SHEET NO.	
ROADWAY DESIGN ENGINEER	HYDRAULICS ENGINEER

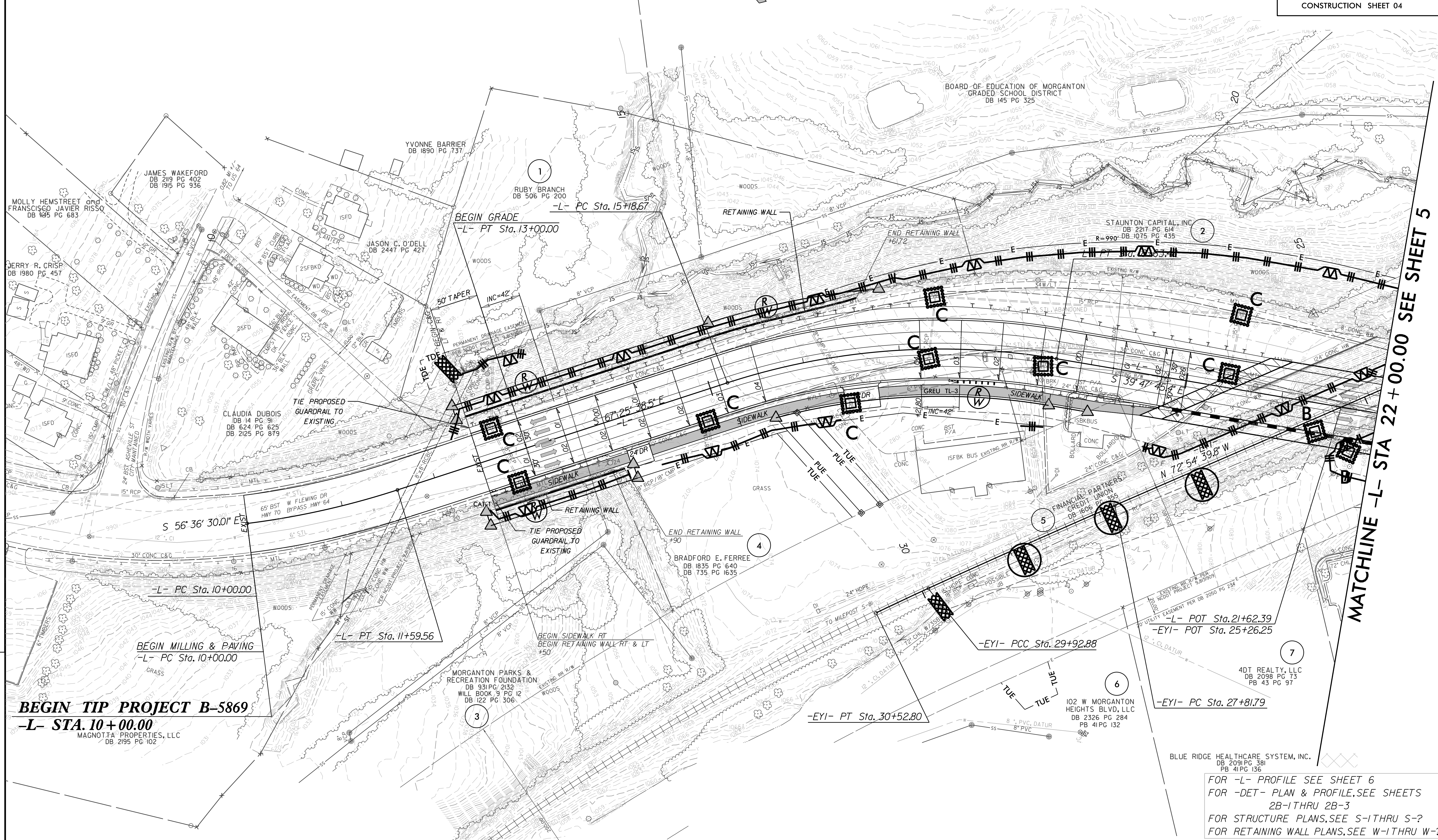
CLEARING AND GRUBBING  
EROSION CONTROL FOR  
CONSTRUCTION SHEET 04

NOTE:  
UTILIZE FABRIC INSERT INLET PROTECTION DEVICES IN LIEU OF  
ROCK INLET SEDIMENT TRAPS, TYPE-C AS DIRECTED TO AVOID  
IMPOUNDMENT OF RUNOFF IN ROADWAY OPEN TO TRAFFIC.

NOTE:  
PLACE TEMPORARY ROCK SEDIMENT DAMS TYPE - B  
AND TEMPORARY ROCK SILT CHECKS TYPE - A AT  
DRAINAGE OUTLETS.



REVISIONS  
ROW REVISION: 12/16/2021; MDPJ -DR- CONVERTED TO RIGHT IN ONLY. PARCELS 7.9 & 10. EASEMENTS ADDED FOR PROPOSED MARKING AND SIGNING REVISIONS.



**BEGIN TIP PROJECT B-5869**  
-L- STA. 10+00.00  
MAGNOTTA PROPERTIES, LLC  
DB 2195 PG 102

MATCHLINE -L- STA 22+00.00 SEE SHEET 5

FOR -L- PROFILE SEE SHEET 6  
FOR -DET- PLAN & PROFILE, SEE SHEETS  
2B-1 THRU 2B-3  
FOR STRUCTURE PLANS, SEE S-1 THRU S-7  
FOR RETAINING WALL PLANS, SEE W-1 THRU W-7